



Apartment with terrace, pool, gym, for sale within Parque la Mexicana.

<i>ID: DCM253-5</i>	<i>Location: Mexico City</i>
<i>Zone: Santa Fe</i>	<i>Type: Condos</i>
<i>Bedrooms: 3</i>	<i>Bathrooms: 4.5</i>
<i>Construction: 330 m2 / 3,552.12 ft</i>	

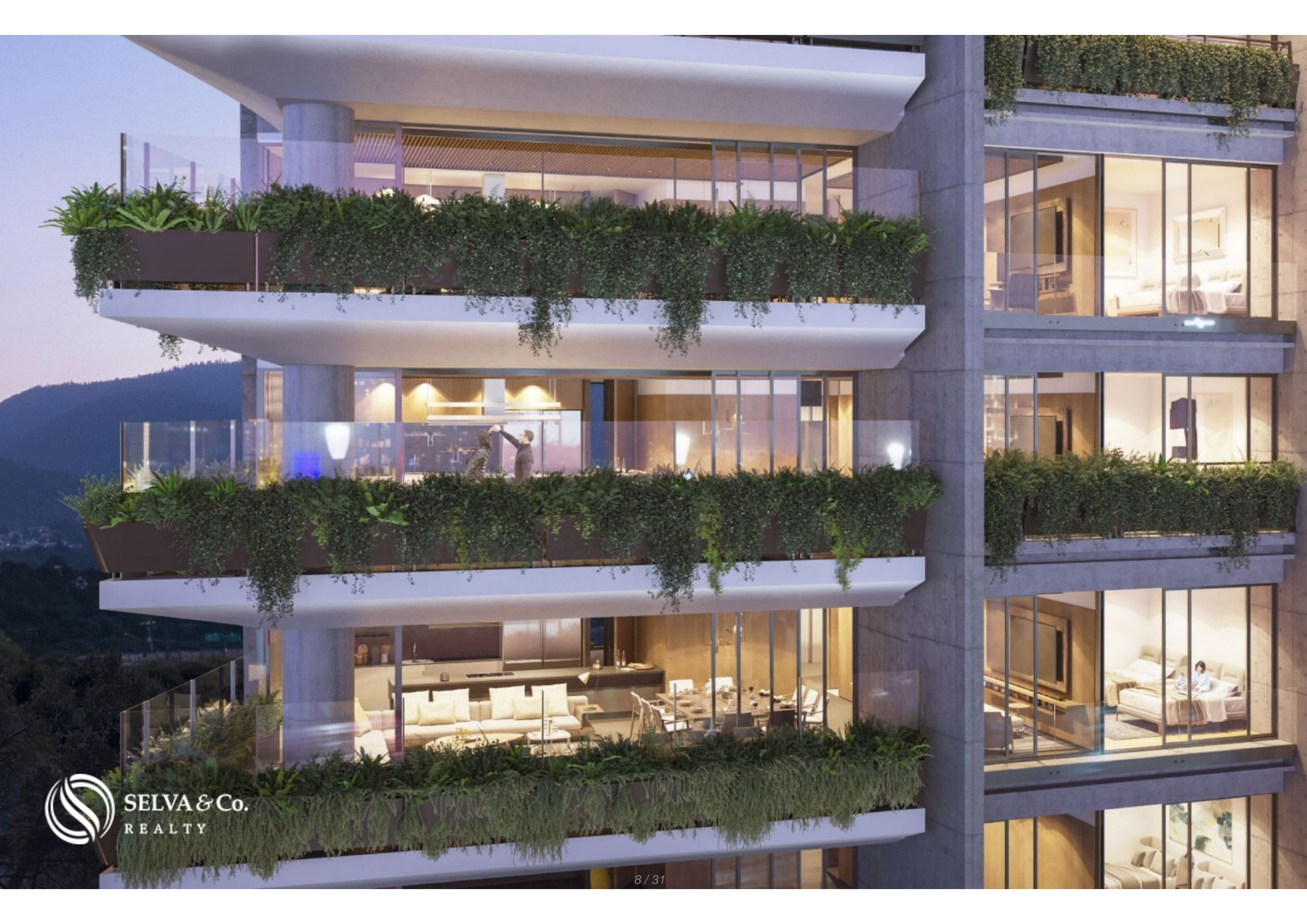












SELVA & Co.
REALTY





SELVA & Co.
REALTY





Area comercial
Shopping area

Jardín Santa fe
Santa fe Garden

CONDO

Parque la Mexicana

Golf

Supermercado

Supermarket



SELVA & Co.
REALTY





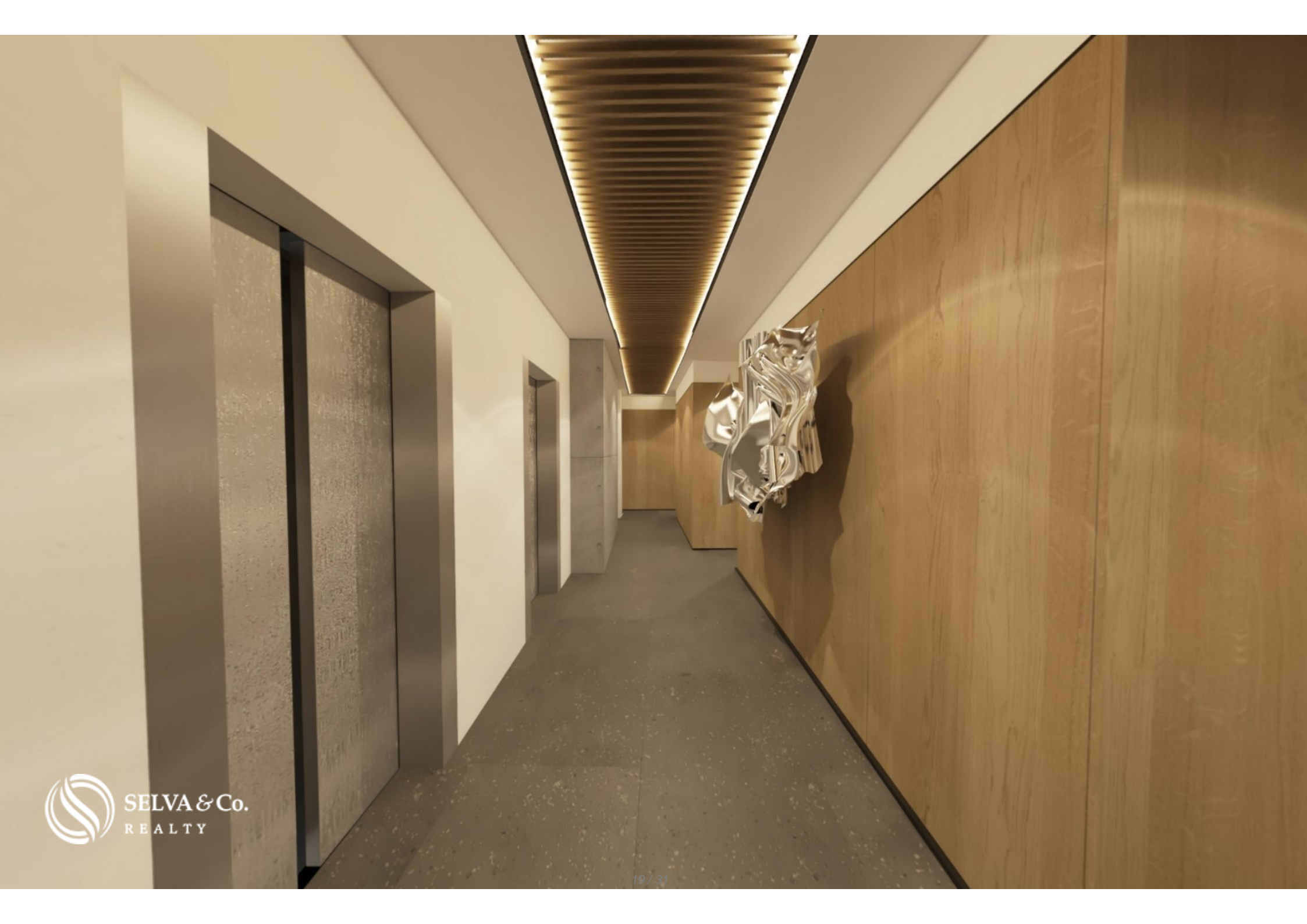
SELVA & Co.
REALTY

















Description

DCM253-5

Apartment with terrace, pool, gym, for sale within Parque la Mexicana.

This Exclusive building features 21 residential apartments, one on each floor, providing more privacy.

Spacious condominiums of 330 m2 each, you can choose between 2, 3 or 4 rooms, delivered ready for customization, for needs and tastes of each family.

Is the only residential development located within the ?La Mexicana? park in Mexico City.

With privileged views of this incredible oasis in the middle of the city.

Located in an area surrounded by monumental buildings, shopping centers,

schools, hospitals, supermarkets and activities for everybody, you will have everything at your fingertips.

GREEN BUILDING

The exterior design, with ornamental plants integrated to the structure, adding large planters on balconies and green views from the main terrace.

SKY ROOF

On the top floor, discover a common area featuring a pool with a swimming lane and panoramic views of the park and the city. The ideal place to spend the entire day sunbathing and having your favorite drink at the bar.

SOCIAL ROOM

Relax and have fun in the game room equipped with television, chairs, tables and armchairs. where you will enjoy with your neighbors, friends and family.

FOR THE LITTLE ONES

This development is Family Friendly, featuring a Playroom where the kids can learn, play and have fun.

KEEP IN SHAPE

Keep up your workout routine with a fully equipped gym for residents.

AMENITIES AND SERVICES

Pool with swimming lane

Sun deck on the sky roof

Sky bar

Playroom

Gym

Paddle court

Social event room

24/7 security

Controlled access

KITCHEN

Prepare the most delicious recipes in this built in kitchen, with custom-made cabinets, enjoy an open design complete with a breakfast bar, that allows you to spend time with your loved ones while preparing your favorite meals.

HIGHLIGHTS OF THE APARTMENT

Panoramic views

Television room

Laundry area

Service room with a private bathroom

Private parking

Bright apartment with large windows that allows each of the most important spaces to have natural light.

Living room with full wall window and access to the terrace that opens to create a

larger space ideal for entertaining your guests or having an indoor-outdoor lifestyle.

LOCATION

Apartment for sale in Santa Fe, Mexico City.

Within La Mexicana Park, surrounded by luxury buildings, shopping areas, green spaces, restaurants and entertainment for everyone

8 minutes from the Santa Fe Garden.

5 minutes to downtown Santa Fe.

16-minute walk from the nearest supermarket.

INVESTMENT IN PRE-CONSTRUCTION

Apartment in pre-sale. Estimated delivery date: November 2024.

The images used for this advertisement are from the general project and do not correspond to any particular residence.

If you want to learn more about the real estate market in Santa Fe, contact us we will be happy to help in your new investment in Mexico City.

The official price of this property is in PESOS, prices in US dollars are provided as a reference. For purchase, the exchange rate of the day will be applied.

Prices may vary according to the progress of construction. Contact us to provide you with the price list and updated information.

Schedule your appointment to visit the area or call us to answer your questions.

#MexicoCityBySelvacorealty #MexicoCityproperties #MexicoCity
#MexicoCitylistings #selvacorealty #SantaFeRealEstate
#MexicoCityrealestate #realestateMexicoCity #condoforsaleMexicoCity
#preconstructioncondosMexicoCity #presalecondosMexicoCity

Property details

- Eco friendly
- Integral Kitchen

Amenities

- Controlled access
- Eco friendly
- Paddle tennis
- Didactic Playroom
- Gym
- Security 24/7

Location





SELVA & Co.
REALTY

MX 984 803 2058 / US 805 308 2900

www.selvacorealty.com