



**SELVA & Co.**  
REALTY

[www.selvacorealty.com](http://www.selvacorealty.com)

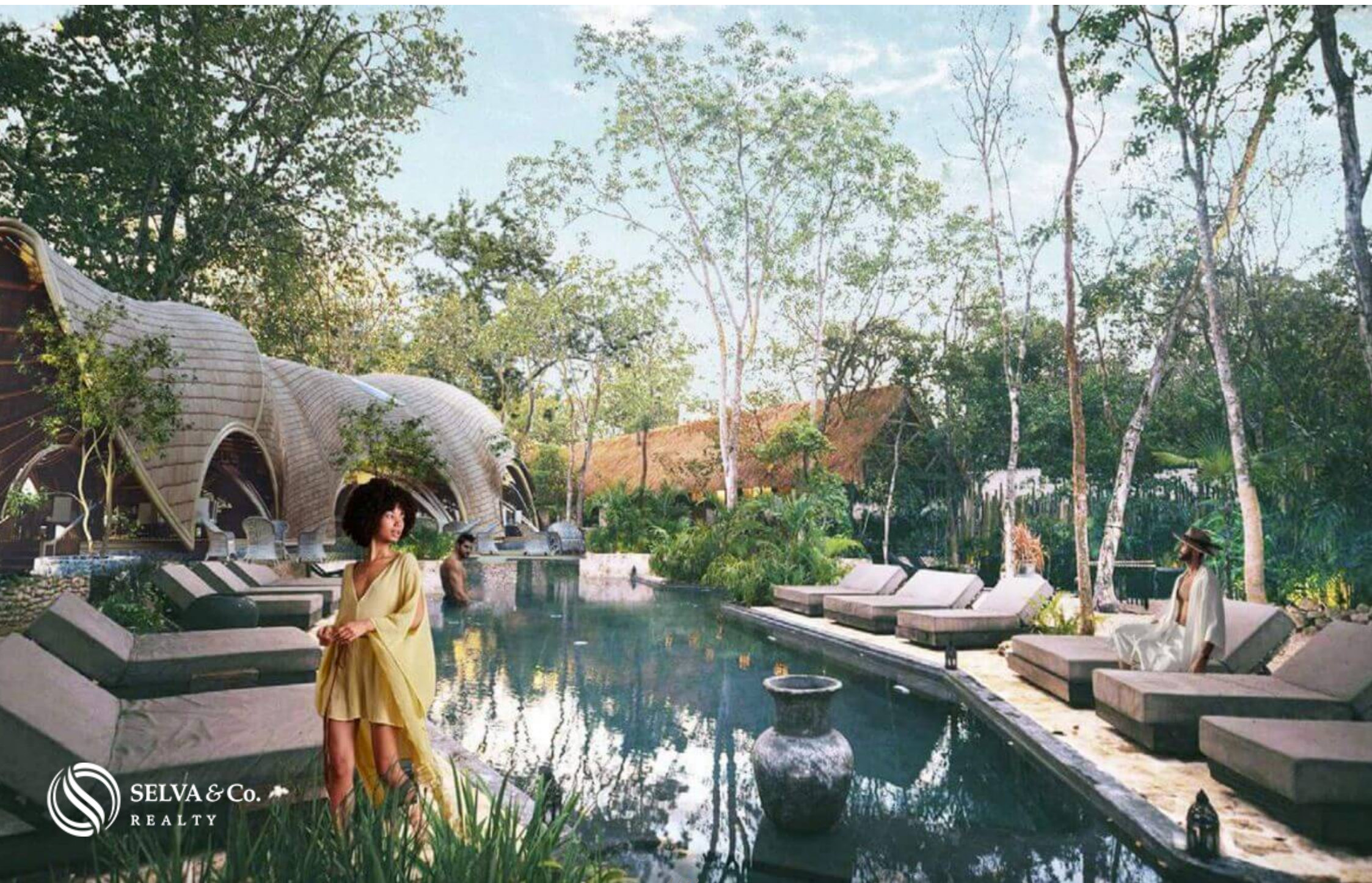


## Land with clubhouse, private community surrounded by nature for sale Tulum.

<i>ID: DLTU226-4</i>	<i>Location: Tulum</i>
<i>Zone: Avenida Coba</i>	<i>Type: Lots</i>
<i>Land: 318 m2 / 3,422.95 ft</i>	







SELVA & Co.  
REALTY

















SELVA & Co.  
REALTY



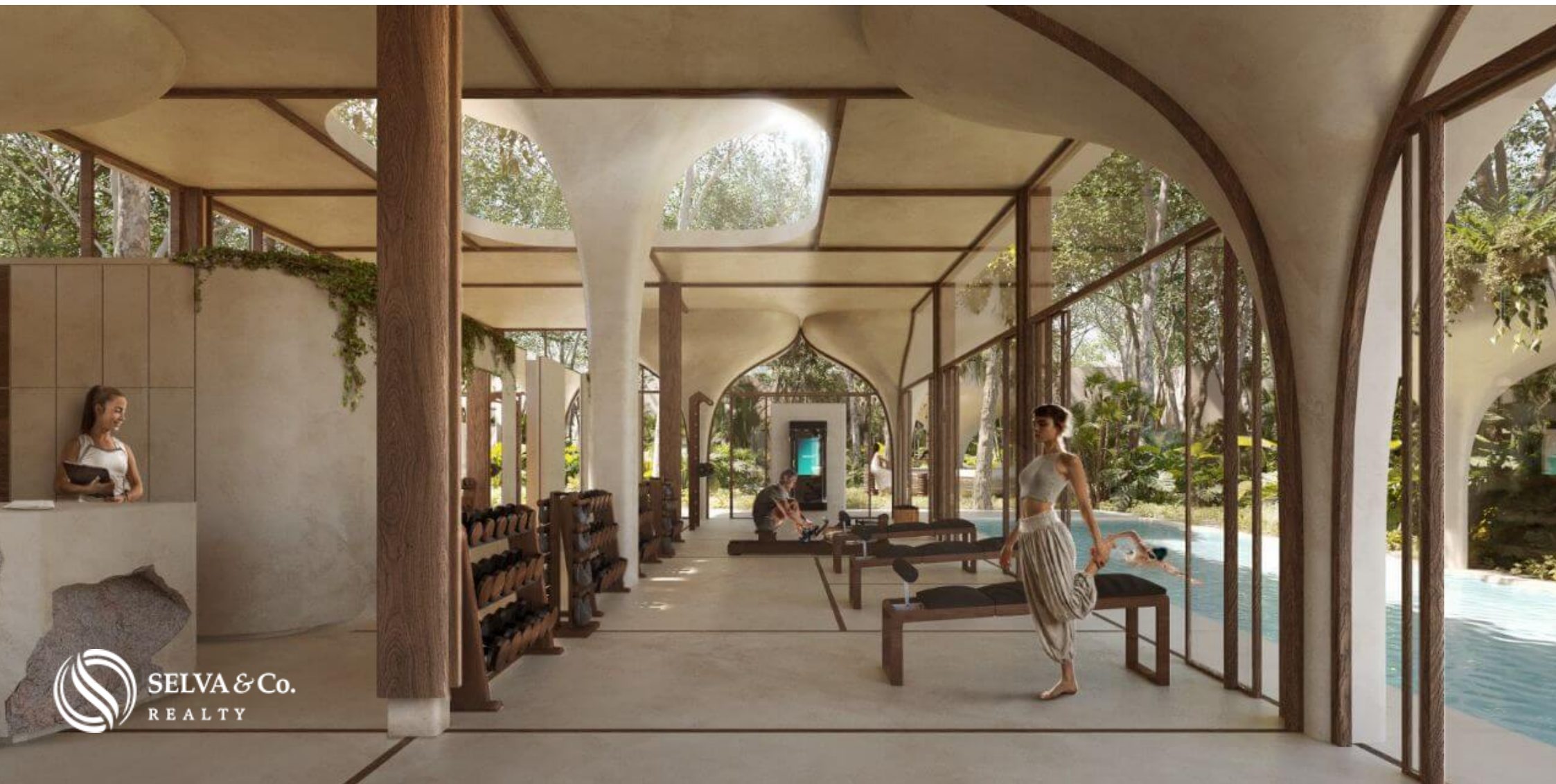






SELVA & Co.  
REAL ESTATE









**Tulum Centro**  
**Tulum Downtown**

**Zona Hotelera**  
**Hotel Zone**

**Terreno**  
**Lot**

**Sitio arqueologico**  
**Archeological site**







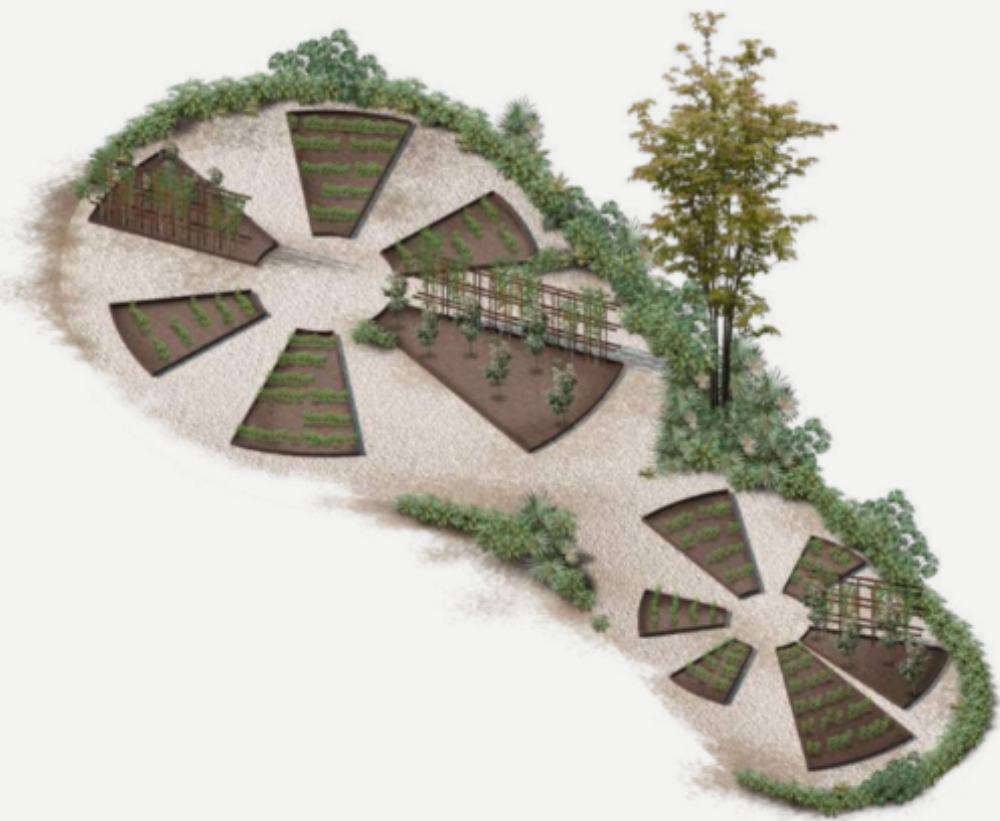


URBAN ORCHARD AND VEGETABLE PATCH

*Everything grows.*

HUERTO URBANO

*Todo crece.*







PLAYGROUND

*A place for the new generation to imagine.*

PARQUE DE JUEGOS INFANTILES

*Un lugar para que la nueva generación imagine.*





## MEDITATION

*A sanctuary for your soul.*

—

## MEDITACIÓN

Un santuario para el alma.



El desarrollador se reserva el derecho de cambiar, alterar o mejorar las especificaciones y detalles que aparecen en este documento sin previo aviso.



















## RECREATIONAL AND LEISURE AREAS

*Return to your essence.*

### ÁREAS DE ESTANCIA

*Vuelve a tu esencia.*









## Description

DLTU226-4

Land with clubhouse, private community surrounded by nature for sale Tulum.

Land to build the house of your dreams in a natural environment. With amenities for the whole family, surrounded by green areas.

This development comes from the minds of talented and visionary allies. A collaboration with the world of design, landscaping, ecology, architecture, art, well-being and health that gives the project the ability to raise the quality of life of its inhabitants.

Community of 71 lots.

TERRACE



You will find a common area with a pool. The ideal place to enjoy the whole day and sunbathe while you cool off in the pool or rest in the shaded area.

### FOR THE LITTLE ONES

This development is designed in a family environment, so for the little ones in the family, it has a Playground area where they can learn, play and have fun.

### EVERYTHING TO PAMPER YOU

Find total relaxation and just steps from your property, you will have an area completely dedicated to pampering yourself, a yoga area and a sun terrace.

### COMMON AREAS SURROUNDED BY GREEN

Facade designed with ornamental plants that are part of the structure, large planters in common areas and green views on the main terrace. The residential area retains 60% green areas.



## KEEP IN SHAPE

Stay fit in its pool, enjoy a walk on its pedestrian paths, practice yoga, exercise in the gym, or simply relax and contemplate its green areas, you will have a different activity to do every day and all just steps from your residence.

## PET FRIENDLY

The residential allows pets, and has an exclusive area for your dog to socialize and be free in a controlled and special environment for them. Enjoy your dog park.

## AMENITIES AND SERVICES

Clubhouse

Contemplative pools

Gym

Walking trails

Kid's play zone

Yoga Area



Dog park

## CHARACTERISTICS OF THE LOT

3 levels, maximum total height of 12 meters.

1 meter lateral restrictions.

Frontal restrictions of 5 meters.

COS: 0.5

CUS: 1.10

## SERVICES

- Paved roads
- Water service
- Light
- Sewer system.

## PROPERTY STATUS



Property title, legal certainty.

## LOCATION

Land within an exclusive residential area with a focus on nature and amenities for the whole family. Live in a natural environment surrounded by entertainment that is designed to enjoy the outdoors.

Wellness Zone, which offers the spa resident, space to do yoga and meditation, as well as a bar focused on well-being.

The Earth zone contains amenities for those residents looking to maintain an active and outdoor lifestyle, from an indoor gym, a game area and barbecue grills. An area that will allow daily activities to be mixed with a natural environment.

Art Zone, will offer creative minds a space to let their imagination and skills run wild with an art gallery, a space for craft workshops, a bookstore, an observatory and a music room. An area for residents who love to try new things and enjoy the little moments.

Gastronomic Zone. It will offer a market, an open kitchen, a Grab&Go



café, a bar, a restaurant and a vegetable garden.

Water Zone. Dedicated to enjoying the gifts of nature, it will offer access to a cenote, immersion pools, long pool, lounge chairs and hammock area.

Security. As part of the integration into the natural environment and security measure for residents, the project will be a closed community to have strict control of traffic, entrances and exits for residents, visitors and suppliers.

## COMMUNITY AMENITIES

Walking trails.

Byke trail.

Wellness center.

Melipona bee farm.

Gastronomic corridor, commercial area with restaurants.

Bird watching areas.

Fruit tree area (you can harvest fruit).

Outdoor cinema and area for artistic performances.

Observatory.

Garden and plantation.

Organic market.

dog park

## INVESTMENT IN PRE-CONSTRUCTION

Land in pre-sale. Estimated delivery date: 24 to 36 months.

The official price of this property is in pesos, the price in dollars is a reference. The exchange rate of the day will be used for the purchase.

If you want more information about the land, learn more about the real estate market on Cobá Avenue, contact us, it will be a pleasure to advise you on your new investment in Tulum.

Schedule your appointment to visit the area or call us to answer your questions.



#Tulumbyselfvacorealty    #Tulum    #lotsandlandTulum    #iLandforsaleTulum  
#lotsforsaleTulum #landbankingTulum #LandBankingMexico

## Property details

- Pet friendly
- Terrace

## Amenities

- Clubhouse
- Pet friendly
- Roof garden
- Swimming Pool
- Gym
- Playground for children
- Sundeck area
- Yoga area



## Location





**SELVA & Co.**  
REALTY

MX 984 803 2058 / US 805 308 2900  
[www.selvacorealty.com](http://www.selvacorealty.com)