

Entrada
Entrance



Lot in gated community with clubhouse, amenities, recreational parks and green areas for sale Playa del Carmen

<i>ID: DLPC215-3</i>	<i>Location: Playa del Carmen</i>
<i>Zone: Ciudad Mayakoba</i>	<i>Type: Lots</i>
<i>Land: 372 m2 / 4,004.21 ft</i>	

Entrada Entrance



SELVA & Co.
REALTY





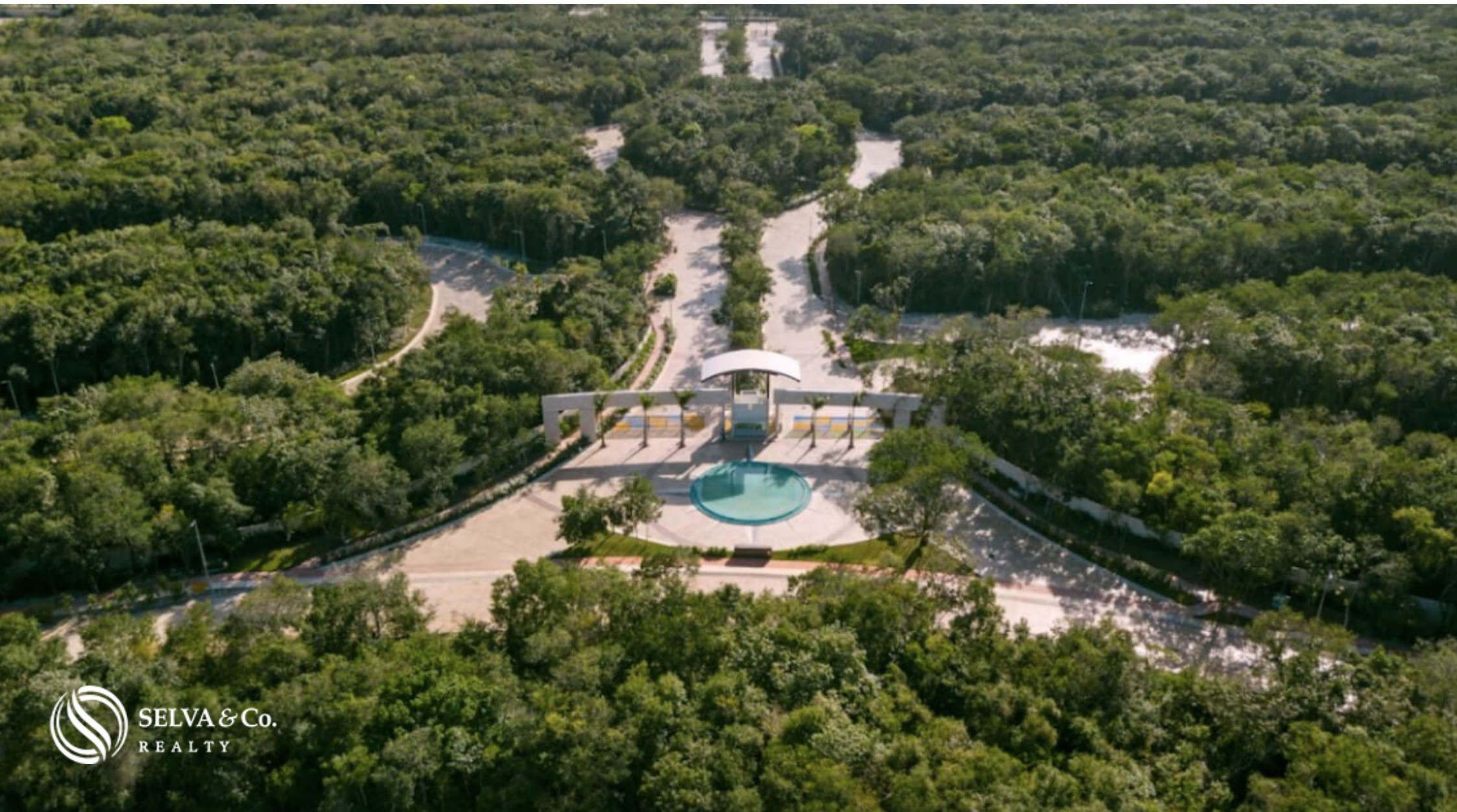






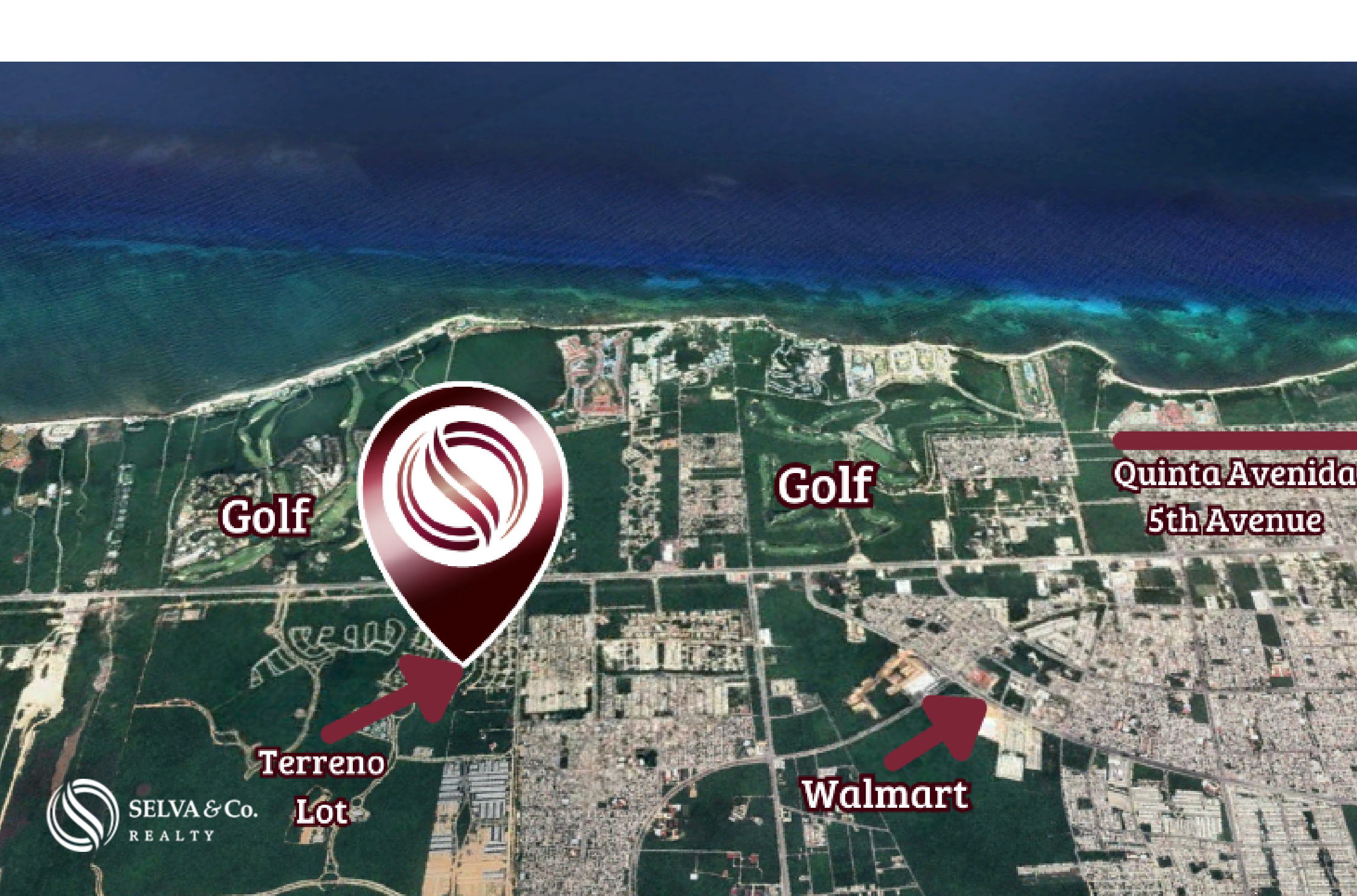


SELVA & Co.
REALTY



Amenidades Amenities









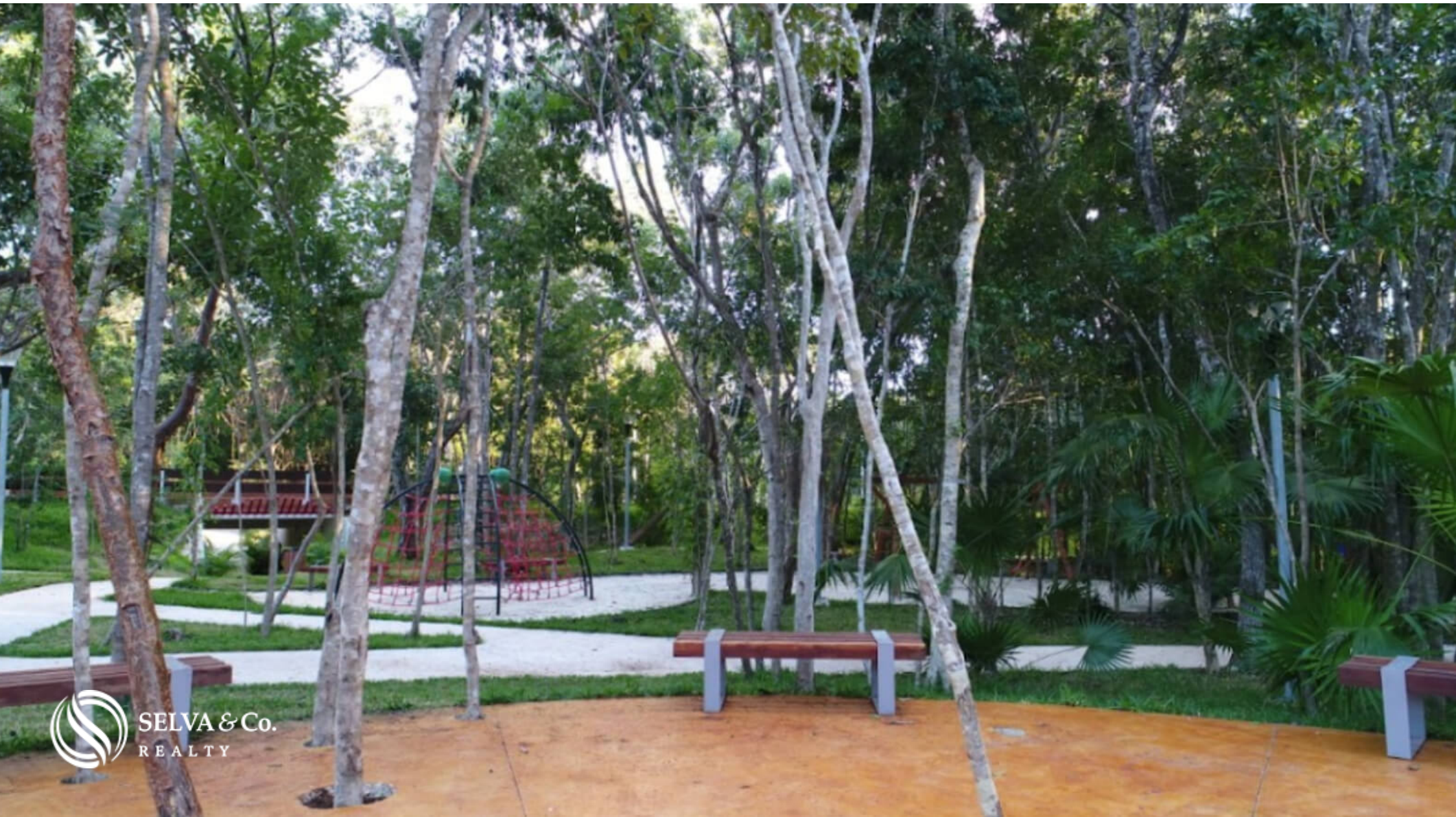
















Description

DLPC215-3

Lot in gated community with clubhouse, amenities, recreational parks and green areas for sale Playa del Carmen

Build the home of your dreams and give your family a lifestyle surrounded by nature in a planned community that has it all.

The lot will have a condominium regime for single-family use and construction guidelines focused on maintaining an adequate residential image.

Single-family residential lots with views and access to parks and/or green areas.

FEATURES AND SERVICES IN THE COMMUNITY

Underground connection, urban infrastructure, ecological lighting in parks and

avenues, restricted entry with card access, urban planning, participatory community and security.

URBANIZATION

With an urbanization that is harmoniously integrated into the environment, it has two residential sections that connect to pedestrian paths that lead to the encounter with lush native vegetation, parks and a cenote ideal for cooling off.

SERVICES

- Paved roads
- Water service
- Light
- Sewer system.

AMENITIES

Recreational pool for children

Swimming pool

Recreational pool for adults

Access and control booth

Two paddle tennis courts and two tennis courts

Ping pong table

Gym on two levels

Snack in pool area

Terrace for events up to 120 people.

Social room with capacity for 100 people

Parking for bicycles and cars

CHARACTERISTICS OF THE LOT

On-site services

Land use: Residential

PROPERTY STATUS

Property title, legal certainty.

LOCATION

Land located in Ciudad Mayakoba, community with recreational parks.

36 minutes from Cancun International Airport.

ABOUT THE CIUDAD MAYAKOBA

Project with intelligent urban planning. That offers a unique lifestyle with amenities in the middle of nature. The perfect balance between modernity and nature.

Residential development that moves over 160 hectares where the integration of nature with 60 hectares of conservation, 3 cenotes, biological corridors and multiple green areas, as well as recreational parks.

With controlled access and 24/7 security.

COMMUNITY AMENITIES

24 kilometers of cycle paths

Xaman Ha Park of 10 hectares.

Green areas

First level roads and underground services.

Sport Club.

Clubhouse.

Security.

Cenotes

Theme parks

Wildlife crossings.

Flora and fauna.

The official price of this property is in pesos, the price in dollars is a reference. The exchange rate of the day will be used for the purchase.

Schedule your appointment to visit the area or call us to answer your questions.

#Playadelcarmenbyselvacorealty #PlayadelCarmen #Playadelcarmenlistings
#selvacorealty #PlayadelCarmenRealEstate #lots&landplayadelcarmen
#lotsforsaleplayadelcarmen #landforsale

Property details

- Garden view

Amenities

- | | |
|--------------------|---------------------|
| - Ballroom | - Bicycle Racks |
| - Cenote | - Controlled access |
| - Gym | - Paddle tennis |
| - Poolfor children | - Roof garden |
| - Snack Bar | - Swimming Pool |
| - swimming pool | - Tennis court |

Location





SELVA & Co.
REALTY

MX 984 803 2058 / US 805 308 2900
www.selvacorealty.com