



## Apartment with amenities, coworking, playground, pet-friendly, for sale CDMX.

<i>ID: DCM236-8</i>	<i>Location: Mexico City</i>
<i>Zone: Miguel Hidalgo</i>	<i>Type: Condos</i>
<i>Bedrooms: 2</i>	<i>Bathrooms: 2</i>
<i>Parking(s): 2</i>	<i>Construction: 114 m2 / 1,227.10 ft</i>















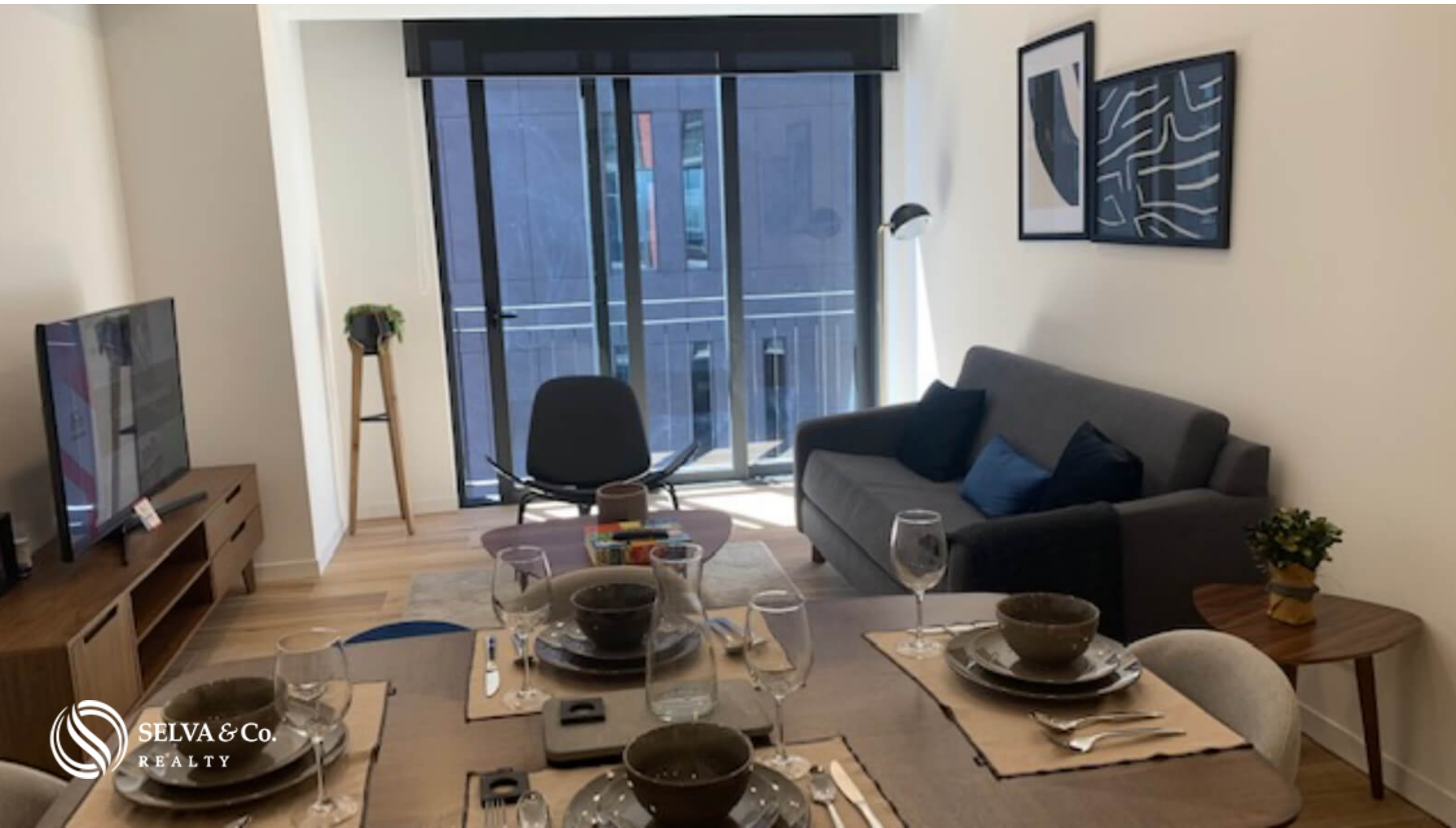






SELVA & Co.  
REALTY







**SELVA & Co.**  
REALTY









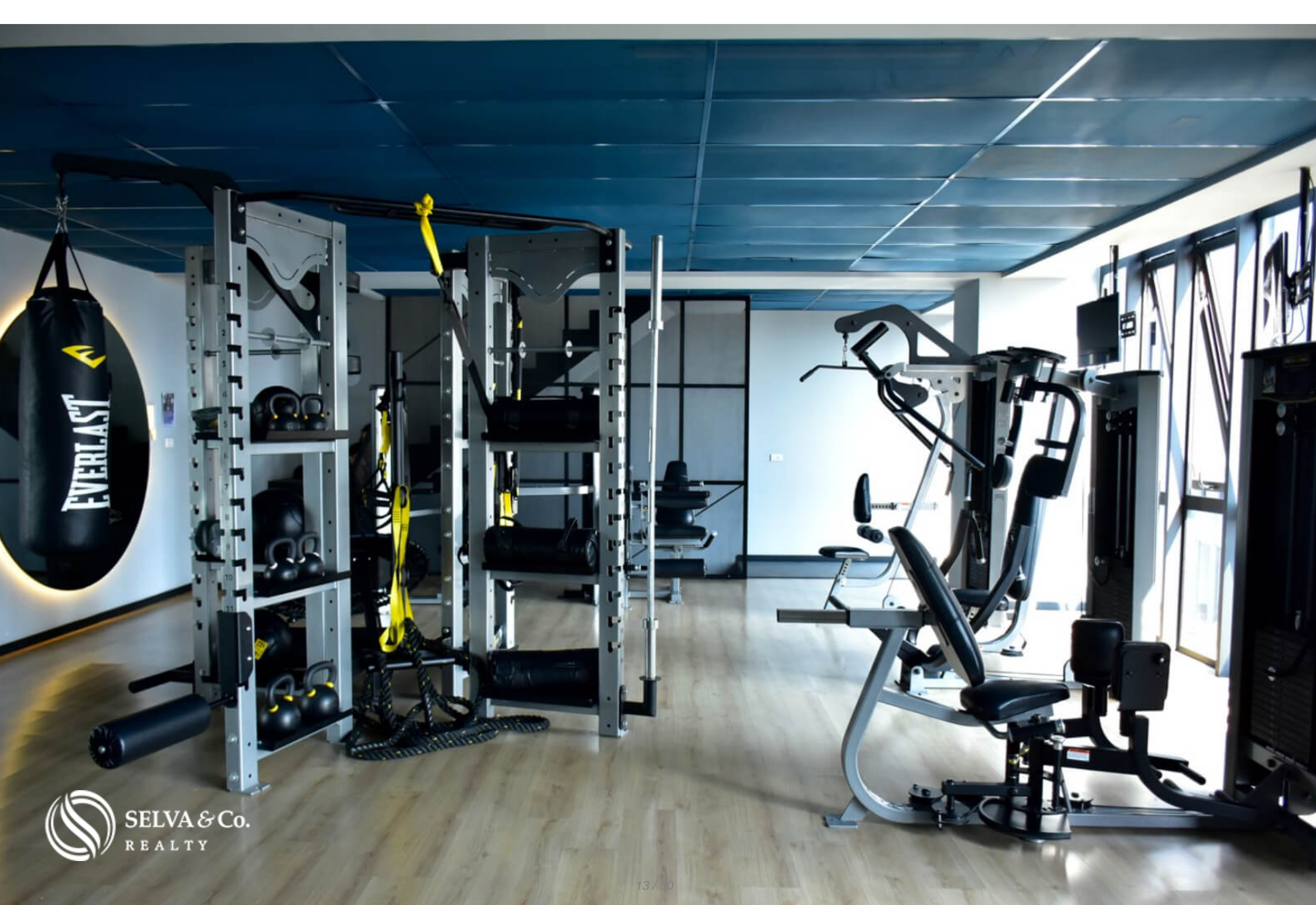
**Museo Soumaya**

**Departamento  
Condo**

**Plaza Antara  
Antara Shopping mall**

**Bosque de Chapultepec  
Chapultepec forest**











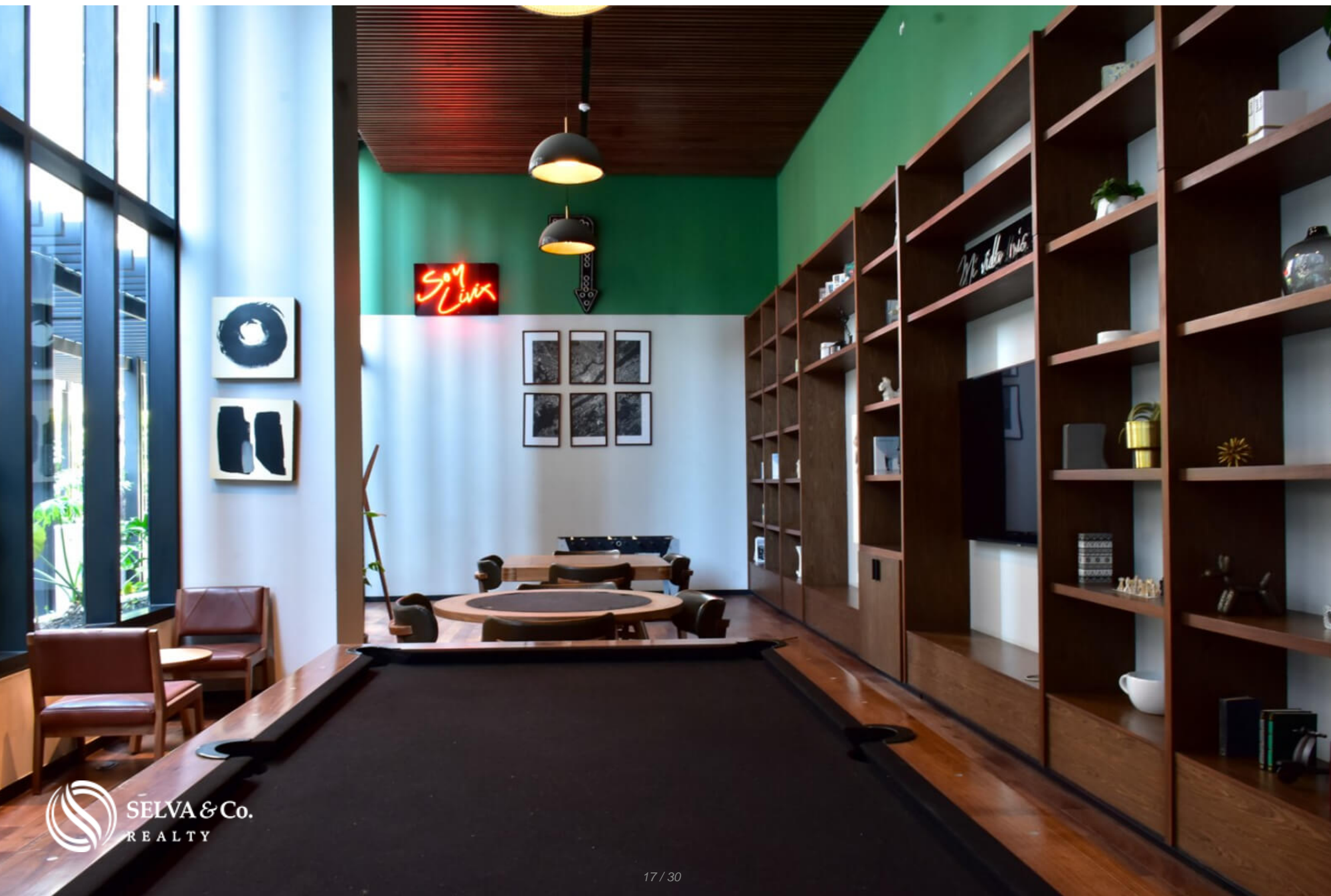


SELVA & Co.  
REALTY























SELVA & Co.  
REALTY







## Description

DCM236-8

Apartment with amenities, coworking, playground, pet-friendly, for sale CDMX.

Modern apartment in a unique environment, connected to all the city's diversity, where every day is yours to live as you wish.

Experience the best lifestyle with outdoor recreation areas and amenities for children and adults.

### BEER GARDEN

Enjoy your Friday afternoon, or whenever you like, with some beers and friends while taking in a panoramic view, a relaxation space in the comfort of your home.

### COWORKING AREA



Working from home has never been better; enjoy a quiet space with internet, ideal for working in a relaxed environment where you can work and connect with your team without interruptions. The best place for "home office."

### ADULTS' LOUNGE

A space dedicated to the grown-ups in the house, whether it's for conversation, enjoying a drink, or simply socializing among adults.

### CHILDREN'S PLAYGROUND

The area that the little ones at home will love for all its recreational areas.

### ROOF GARDEN

For those who enjoy an unmatched view of the city and contact with nature, this condo offers the opportunity to grow your own vegetables and relax above the daily hustle and bustle.



## PET FRIENDLY

This building allows pets.

## TOWERS

3 towers. Each tower has two elevators, a freight elevator, and a trash chute.

## HIGHLIGHTS OF THE CONDO

Panoramic city views from some of its amenities.

Bright apartment with large windows that allow natural light into each of the most important spaces.

Master bedroom with en-suite bathroom, walk-in closet, spacious area.

Private parking for 1 or 2 cars.

## LOCATION

Apartment for sale in the Miguel Hidalgo zone, in an area surrounded by museums, gastronomy, culture, and a vibrant lifestyle.

4 minutes from Plaza Antara.

6 minutes from the Soumaya Museum.

## NEW APARTMENT

Ready-to-move-in apartment, you can move in right away.

The images used for this advertisement are from the general project and do not correspond to a specific residence.

If you want more information about the condo or to learn more about the real estate market in the Miguel Hidalgo zone, contact us; it will be a pleasure to assist you in your new investment in Mexico City.

The official price of this property is in pesos; the price in dollars is a reference. The exchange rate of the day will be used for the purchase.



Schedule your appointment to visit the area or call us to answer your questions.

#MexicoCityBySelvacorealty      #MexicoCityproperties      #MexicoCity  
#MexicoCitylistings      #selvacorealty      #MiguelHidalgoRealEstate  
#MexicoCityrealestate      #realestateMexicoCity      #Petfriendlyrealestate  
#condoforsaleMexicoCity

## Property details

- Garden
- Patio
- Walking closet
- Panoramic View
- Pet friendly

## Amenities

- Adults Game Room
- Elevator
- Pet friendly
- Roof garden
- Business center
- Gym
- Playground for children
- Sport bar



## Location





**SELVA & Co.**  
REALTY

MX 984 803 2058 / US 805 308 2900  
[www.selvacorealty.com](http://www.selvacorealty.com)