





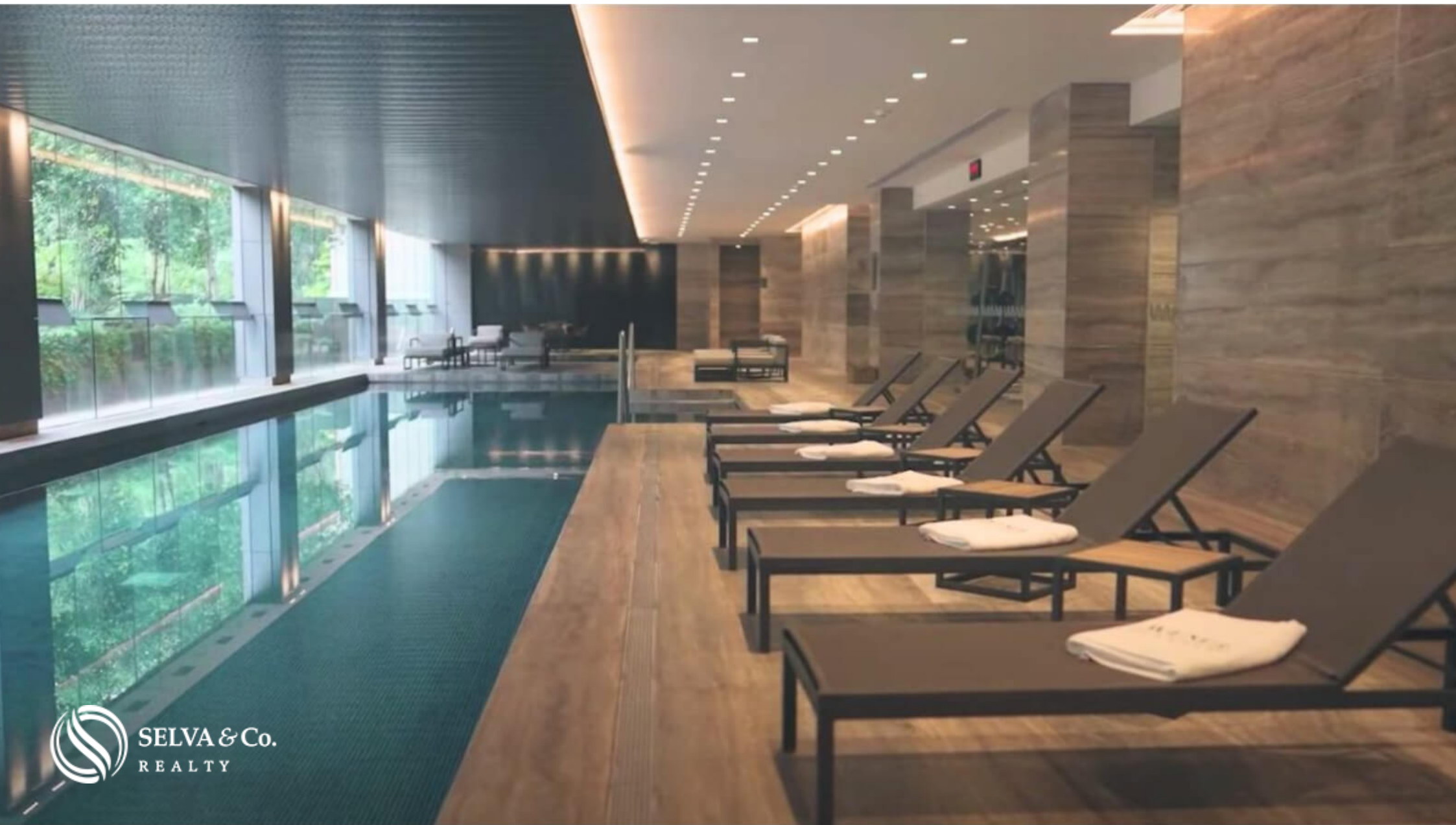
# Penthouse with roof garden and terrace, pool, central park, for sale Polanco

<i>ID: DCM222-6</i>	<i>Location: Mexico City</i>
<i>Zone: Polanco</i>	<i>Type: Penthouse</i>
<i>Bedrooms: 3</i>	<i>Bathrooms: 3.5</i>
<i>Levels: 1</i>	<i>Parking(s): 2</i>
<i>Construction: 197 m2 / 2,120.51 ft</i>	<i>Land: 289 m2 / 3,110.80 ft</i>

















SELVA & Co.  
REALTY







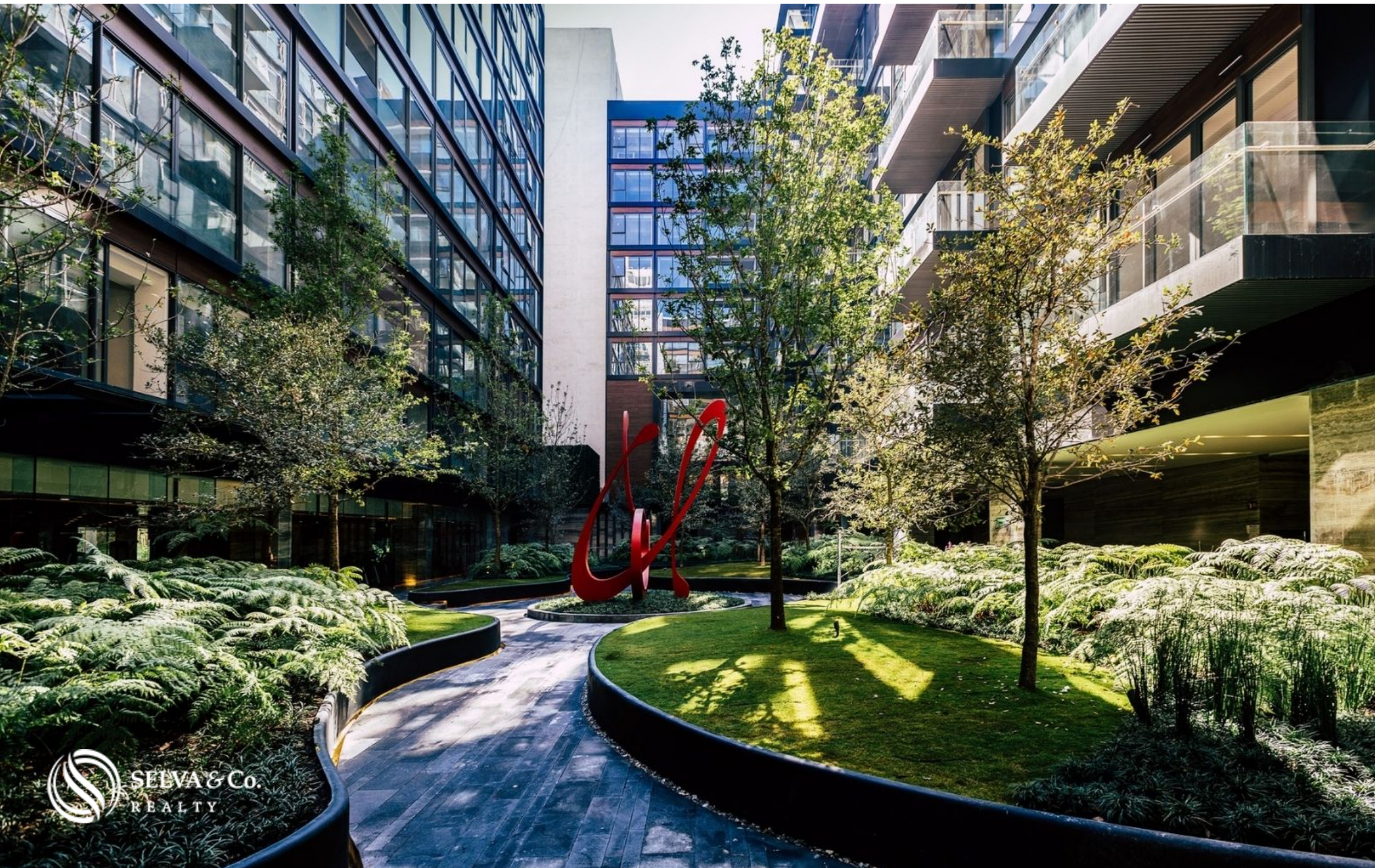
## Alberca semi-olimpica / *Semi-olympic pool*





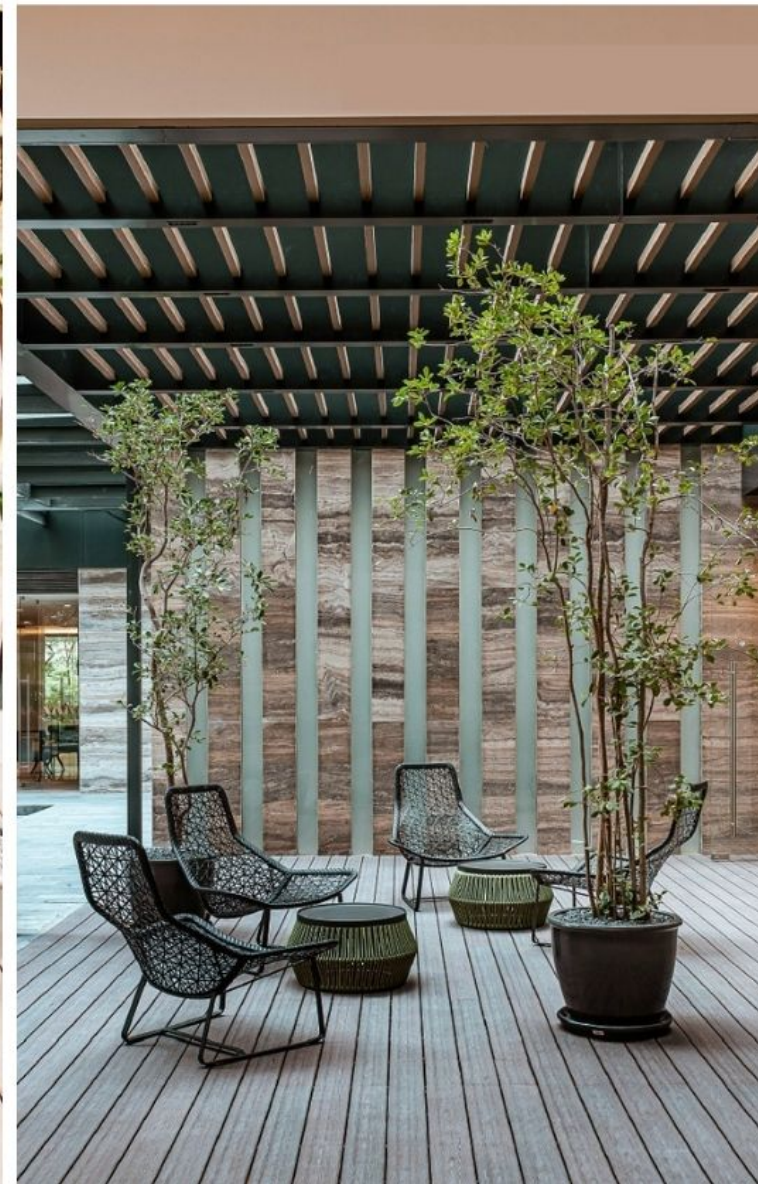
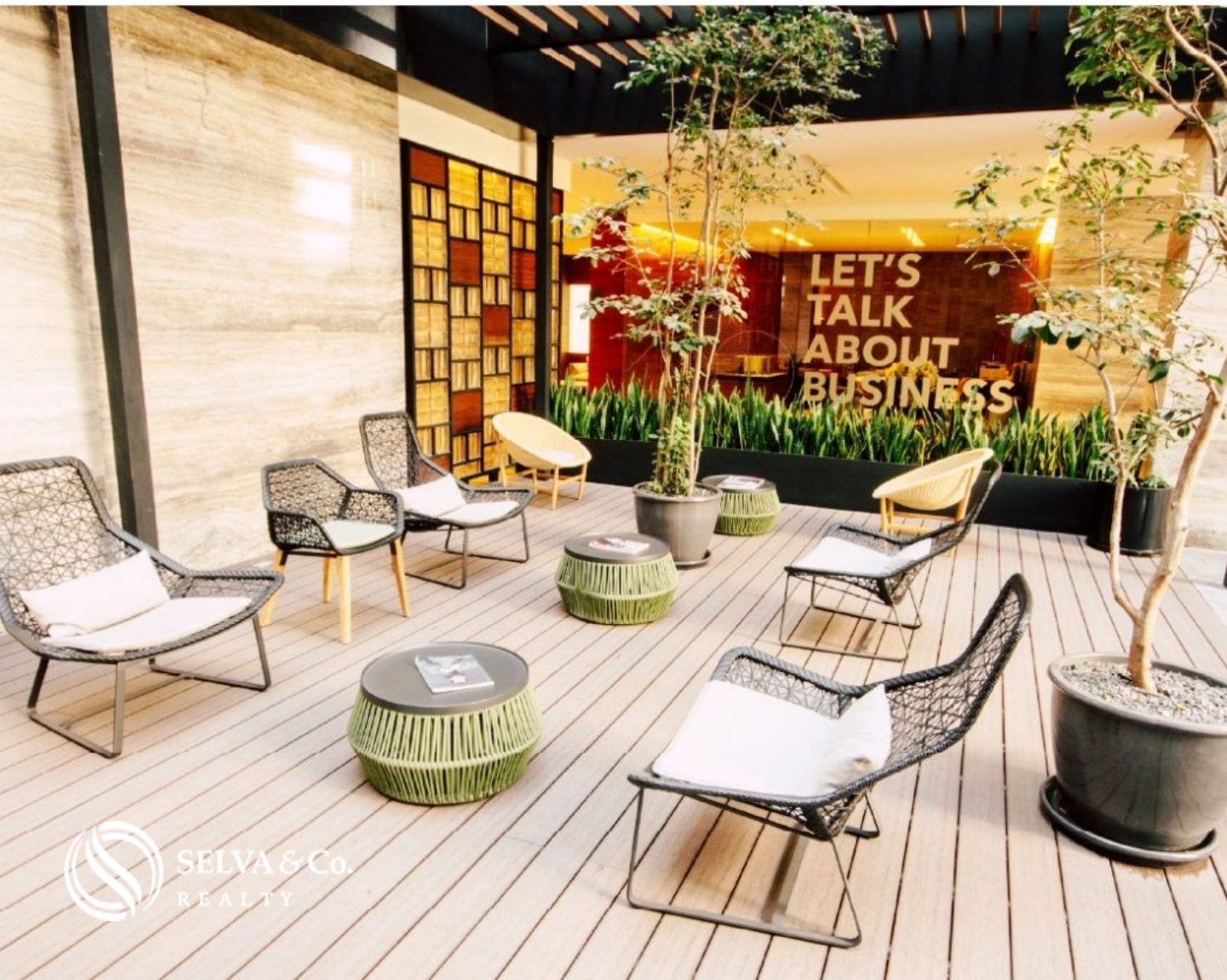








## Centro de negocios / Bussiness Center







**Pabellón Polanco**  
**Shopping Mall**

**Walmart**

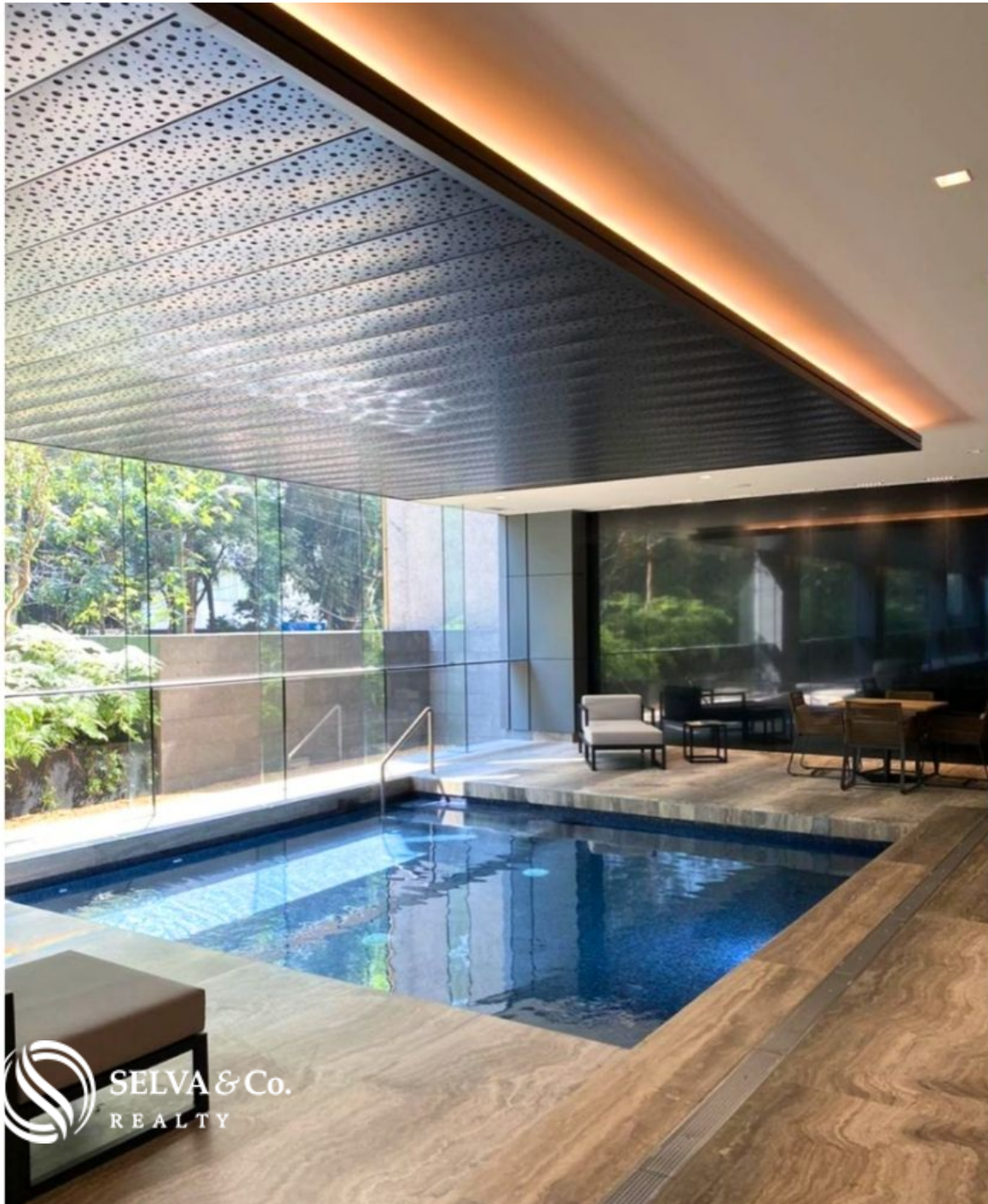
**Plaza Polanco**  
**Shopping Mall**

**Departamento**  
**Apartment**



**SELVA & Co.**  
**REALTY**





Area de  
chapoteadero

Wading area







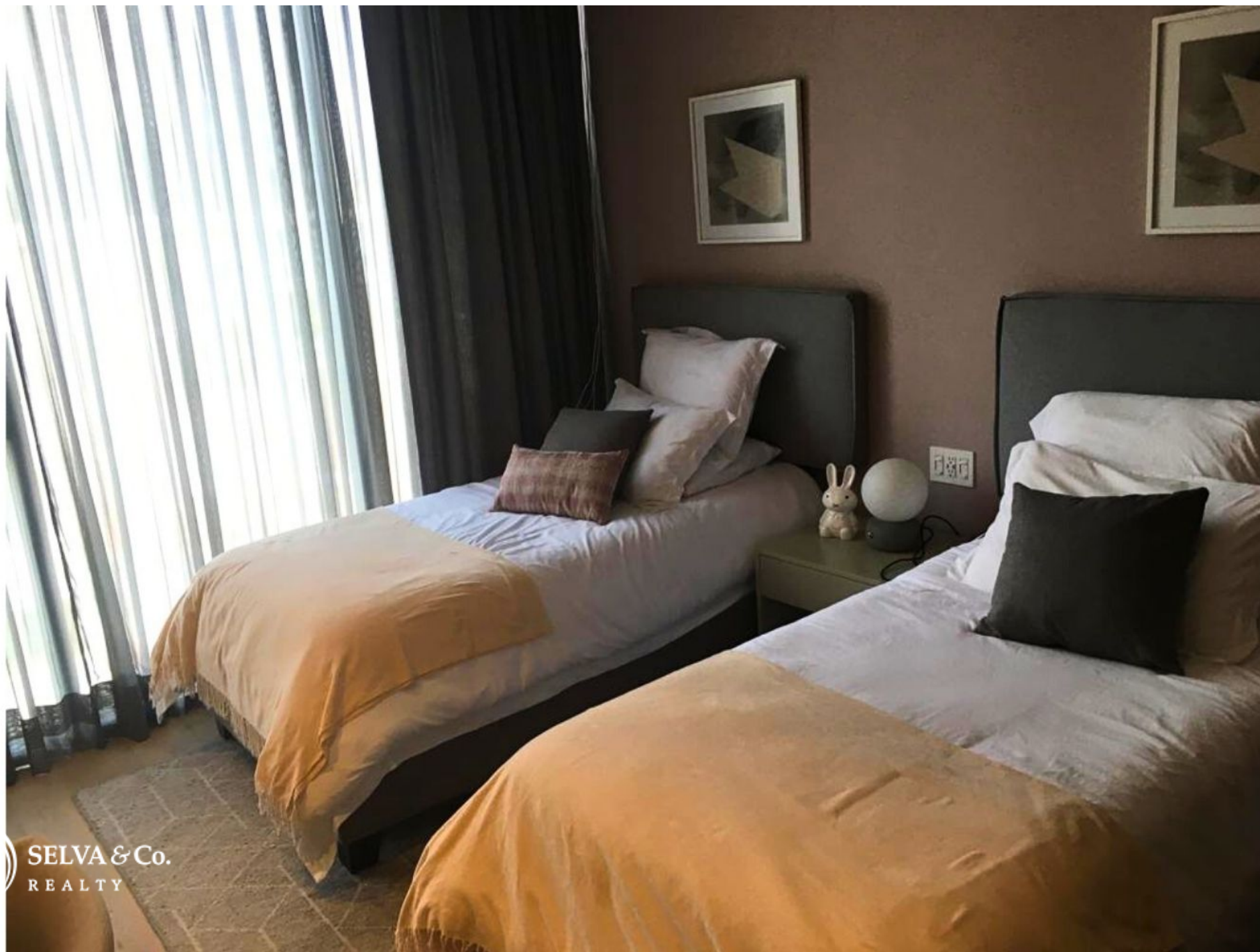


VA & Co.  
ALTY









SELVA & Co.  
REALTY









SELVA & Co.  
REALTY















## Description

DCM222-6

Penthouse with roof garden and terrace, pool, central park, for sale Polanco

Development of 123 condominiums, distributed in three 10-story towers. With luxury amenities that will make you feel like you are in a 5-star hotel.

Due to its privileged location you have supermarkets, shopping centers, gourmet restaurants nearby and you will have close access to the main roads of the city.

3-bedroom condominium, with luxury finishes, magnificent lighting and spacious spaces. You will have a personalized space that best suits your lifestyle.

SEMI-OLYMPIC POOL

Fully hermetic and heated semi-Olympic pool with Roman stairs for easy access



and with shallow area for the little ones. This area is completely covered and has an area with lounge chairs and armchairs for you to relax after your swimming routine.

## LOUNGE TERRACE

On the second floor you will find a common area with view to the central park. The ideal place to enjoy the whole day

## CENTRAL PARK

Undoubtedly the plus of this development is its central park, an area of more than 1000 m<sup>2</sup> where you can go out to relax, walk or simply sit down to read a book and contemplate its flower boxes, all the apartments have a view of this beautiful garden.

## SPA

Find total relaxation steps from your residence.



You will have an area completely dedicated to pampering yourself, a spa with massage rooms, steam, sauna and Jacuzzi with hydromassage.

## EVENTS ROOM

For your social events, find an ideal space to show off as a host, organizing the best parties within the development. Event room for 40 or 50 people.

## BUSSINESS CENTER

Ideal for closing that deal for which you have tirelessly fought, this workspace will have all the tools and advantages at your disposal so that you and your partners make your work a unique experience.

## PET-FRIENDLY

The residential allows pets, and has an exclusive area for your dog to socialize in a controlled and special environment for them. Enjoy your dog park.



## AMENITIES AND SERVICES

Lobby

Lounge terrace overlooking the central park

Semi-Olympic pool with wading pool

Event room

Central Park

green areas

pet park

Bikes

Spa

Gym

Business center

Toy library

Valet parking

Concierge service



## BATHROOM WITH DOUBLE SINK

Large bathroom in the master bedroom, with marble walls and double sink, everyone will have their space to brush their teeth or get ready for those special days.

## KITCHEN

Prepare the most delicious recipes in this built in kitchen, with custom-made cabinets, double sink, granite countertops. These apartments have the option of a kitchen with an open or closed design, you can choose the one that best suits your needs.

## KITCHEN EQUIPMENT

Fridge.

Electric stove.

Dishwasher

Electric oven



## HIGHLIGHTS OF THE CONDO

Panoramic views of the city and the central park.

Bright apartment with large windows and high ceilings that allow each of the most important spaces to have natural light.

Living room with full wall window.

Additional space, which can be used as an office or family room.

Master bedroom with en-suite bathroom, walk-in closet, ample space.

Bedrooms with wooden closets and full bathrooms

Private parking for 2 cars.

Laundry area.

Service room with private bathroom.

White closet

Half guest bathroom

French balcony



PENTHOUSE (Ask for availability)

private rooftop

Private parking for 3 cars

private terrace

## FINISHES

Duovent gates that insulate sound and temperature

Bathrooms with top quality accessories and marble coating and tempered glass floor-to-ceiling doors.

## LOCATION

Apartment located in one of the best exclusive areas with the highest added value in Mexico, the Polanco neighborhood near important avenues, with large shopping areas, exclusive restaurants, entertainment areas.

2 min from the Soumaya Museum and shopping centers (Plaza Polanco)

34 min to Benito Juárez International Airport (MEX)



## NEW CONDO

Apartments ready for immediate delivery, you can move in immediately.

The images used for this advertisement are from the general project. They do not correspond to a particular residence.

If you want more information about the apartment or learn more about the real estate market in the Polanco area, contact us, it will be a pleasure to advise you on your new investment in Mexico City.

The official price of this property is in pesos, the price in dollars is a reference. The exchange rate of the day will be used for the purchase.

Contact us to send you the price list and updated information.



Schedule your appointment to visit the area or call us to answer your questions.

#MexicoCityBySelvacorealty      #MexicoCityproperties      #MexicoCity  
#MexicoCitylistings   #selvacorealty   #PolancoRealEstate   #MexicoCityrealestate  
#realestateMexicoCity   #Petfriendlyrealestate   #condoforsaleMexicoCity  
#penthousesMexico      #Penthouselifestyle      #penthousearealestate  
#secondhomeMexicoCity



## Property details

- Lap pool
- Terrace
- Pet friendly

## Amenities

- Ballroom
- Didactic Playroom
- Lobby
- Pet friendly
- Swimming Pool
- Business center
- Gym
- Lounge Area
- Spa



## Location







**SELVA & Co.**  
REALTY

MX 984 803 2058 / US 805 308 2900  
[www.selvacorealty.com](http://www.selvacorealty.com)