



SELVA & Co.
REALTY

www.selvacorealty.com



Luxury penthouse, in a private residential area with lakes, green areas, shopping center and exclusive amenities, new for sale in Merida.

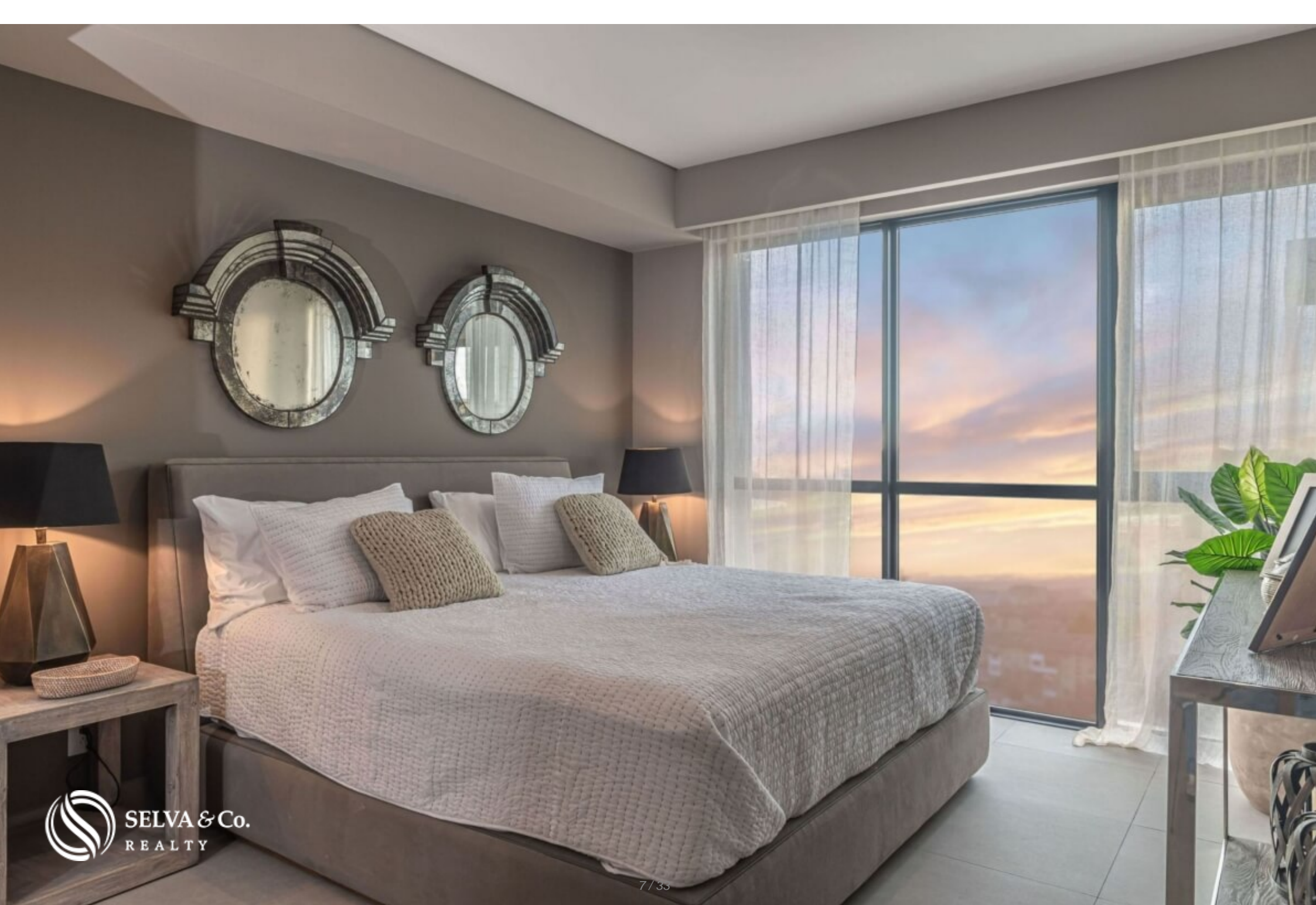
<i>ID: MLS-DME200-1</i>	<i>Location: Mérida</i>
<i>Zone: North Zone</i>	<i>Type: Penthouse</i>
<i>Bedrooms: 4</i>	<i>Bathrooms: 3.5</i>
<i>Construction: 270 m2 / 2,906.28 ft</i>	

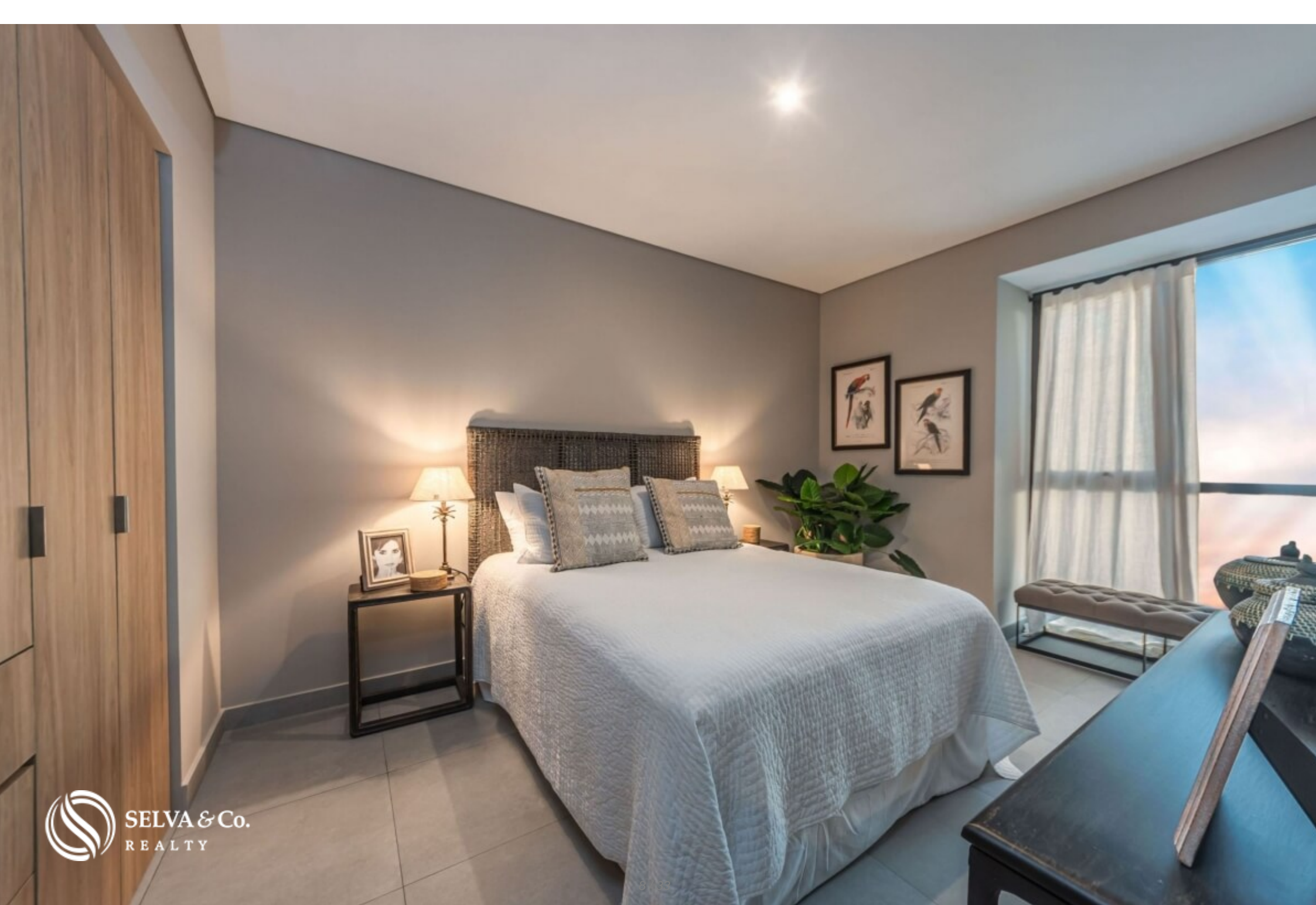












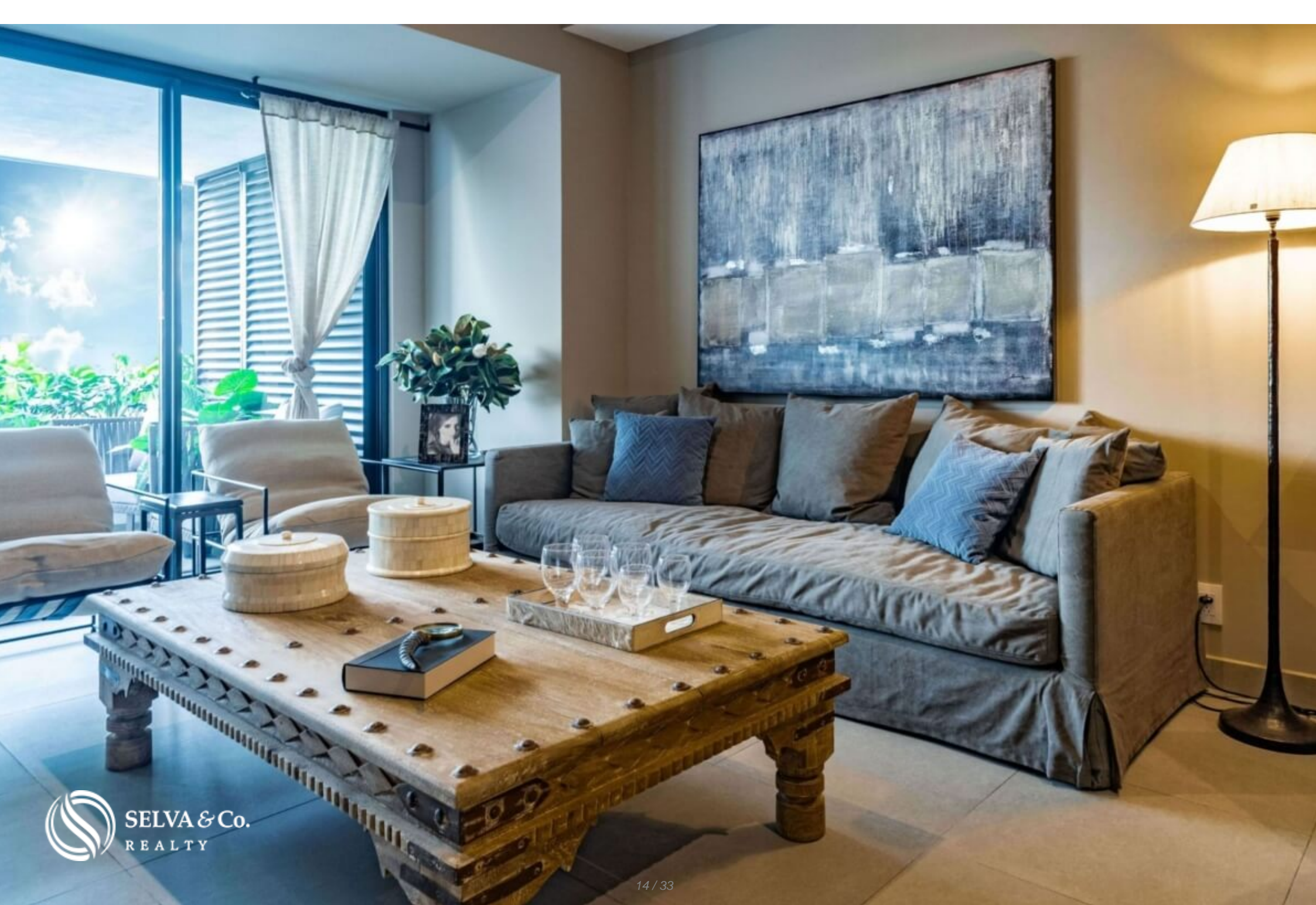














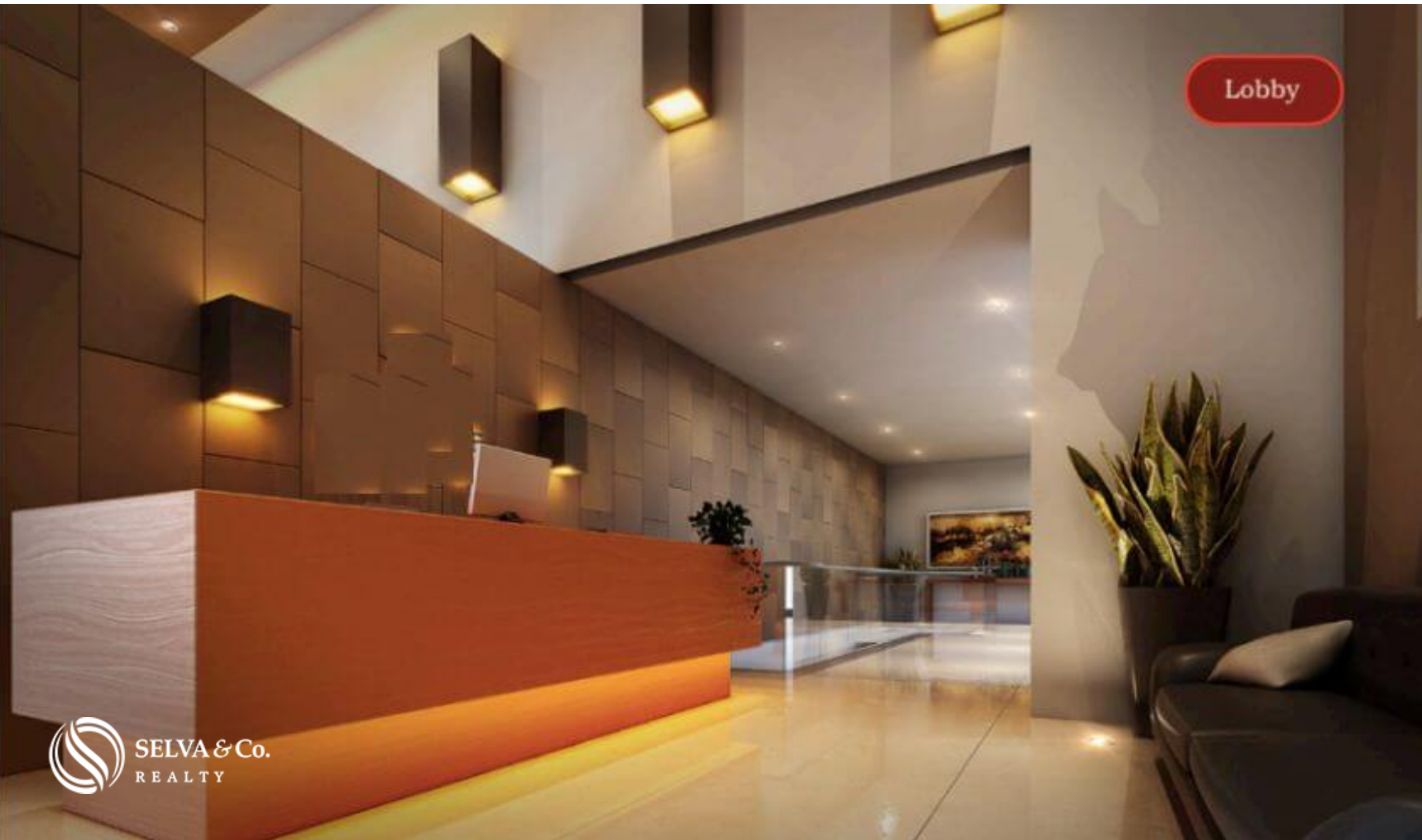








SELVA & Co.
REALTY



Lobby





Description

MLS-DME2001

Luxury penthouse, in a private residential area with lakes, green areas, shopping center and exclusive amenities, new for sale in Merida.

New apartment, designed to enjoy a green environment with pedestrian walkways and common outdoor areas, with a luxury shopping center with cinemas, gourmet area and entertainment all within walking distance of your apartment.

LOCATION

Condominium located at the end of the most emblematic avenue of the city, Paseo Montejo, in the most privileged area north of Mérida, the best city to live and

invest in the Yucatan Peninsula

This development is connected to the main roads of the city, Periferico, highway to Progreso and Prolongación Paseo Montejo. Its accessibility favors the services that can be enjoyed, 22 minutes from Mérida International Airport and 21 minutes from Progreso, the closest beach.

HIGHLIGHTS OF THE DEPARTMENT

Visitor parking, you will no longer worry about accommodating your visitors in the parking lots of others.

Enjoy the outdoors all day thanks to its private terraces and outdoor common areas.

Bright apartments with large windows that allow each of the most important spaces to have a natural entry of light, including in the bathrooms.

Social area with full wall window and access to the terrace or balcony that opens to create a larger space ideal for entertaining or having an indoor-outdoor lifestyle.

It has a good internet signal.

AMENITIES AND SERVICES

- Outdoor pool.
- Underground parking.
- Room for events and multiple uses.
- Grill area.
- Shopping center just 3 minutes walk.

- Security 24-7 and controlled access.
- Parking for visitors.

BUILDING EQUIPMENT

- Emergency light plant.
- Garbage chute.
- Closed circuit.
- Access to central park

CHARACTERISTICS OF THE RESIDENTIAL

Residential area with green areas, designed to enjoy the outdoors and with entertainment for the whole family. With author's landscape design and

magnificent relaxation areas.

AMENITIES WITHIN THE RESIDENTIAL

- Play areas for children
- Relaxation areas.
- Central park and lake.
- Landscaping.
- Medical Center.
- 5 star hotel.
- Shopping area.
- Gastronomy.
- Mall.

ABOUT THE SHOPPING CENTER

This lifestyle mall combines modern and local trends in its design, offering the best international fashion, home and entertainment brands, as well as an interesting gastronomic offer, along with extensive green areas and an impressive lake. that will make this destination one of the most important in the entire Mexican Southeast

ABOUT THE CENTRAL PARK

Beautiful lakes and gardens in an environment of 80,000 m2 where 1,100 trees and more than 125,000 ornamental plants converge; fountains, picnic areas, hills and street furniture, proof of excellent landscaping, essential part of a wellness lifestyle.

IMMEDIATE DELIVERY

New apartment ready for immediate delivery, you just need to decorate and furnish them to your style.

FINANCING AVAILABLE

Flexible financing plans direct with the developer.

If you want to visit this department and know more about this residential area, contact us, it will be a pleasure to advise you on your new investment in Mérida.

Click on the contact button for more information or to schedule an appointment.

#MLSDM #paseomontejolistings #selvacorealty #selvacorealtyMérida
#investinMérida #condoforsaleMérida #lifestyleMérida
#liveinMérida #greenviewrealestate #liveMérida
#investinMérida #Méridarealestate #greenrealestate
#realestateMérida #condoforsaleMérida #Mérida
#condoforsaleMérida #Mérida #retireinMerida #secondhomeMerida
#vacationhouseMerida #luxuryrealestatemexico #luxuryrealestateMérida
#luxuryrealestateMérida #paseomontejorealestate #paseomontejo

Property details

- Balcony
- Terrace
- Underground parking

Amenities

- Guest parking
- Ballroom
- Bbq Grill
- Controlled access
- Playground for children
- Security 24/7
- Swimming Pool

Location





SELVA & Co.
REALTY

MX 984 803 2058 / US 805 308 2900
www.selvacorealty.com