



SELVA & Co.
REALTY

www.selvacorealty.com



Penthouse with private pool, clubhouse with luxury amenities surrounded by trees,, kitchen with quartz counter, marble floors, Aldea Zama

<i>ID: MLS-DTU290-2</i>	<i>Location: Tulum</i>
<i>Zone: Aldea Zama</i>	<i>Type: Penthouse</i>
<i>Bedrooms: 2</i>	<i>Bathrooms: 2</i>
<i>Construction: 154 m2 / 1,657.66 ft</i>	

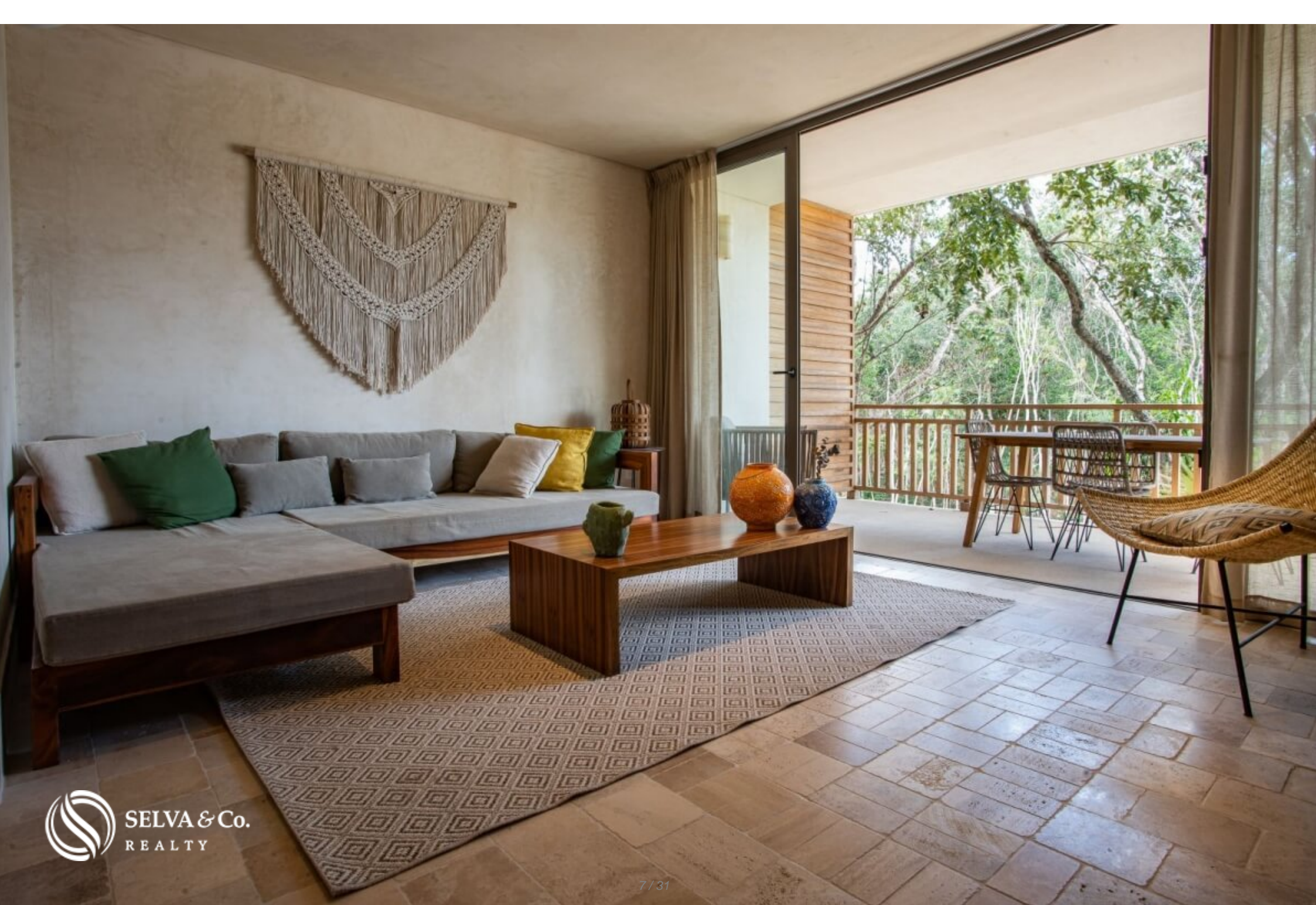








SELVA & Co.
REALTY





















Main access
SELVA & Co.
REALT
ACCESO PRINCIPAL

ALLES







EXCLUSIVA COMUNIDAD EN TULUM

TULUM EXCLUSIVE
COMMUNITY





Estas imágenes son únicamente con propósitos ilustrativos. El producto y el material utilizado están sujetos a cambios significativos de acuerdo al criterio del desarrollador.
These images are for illustrative purposes only. The final product and the material used are subject to significant change at the sole direction of the developer.

Description

MLS-DTU290-2

Penthouse with private pool, clubhouse with luxury amenities surrounded by trees,, kitchen with quartz counter, marble floors, Aldea Zama, for sale, Tulum.

New condo, in a private residential area with common areas surrounded by jungle that will allow you to enjoy the outdoors and nature around your home.

HIGHLIGHTS OF THE CONDO

Bright condominiums with large windows that allow each of the most important spaces to have natural light.

Social area with full-wall window and access to the terrace or balcony that opens to

create a larger space ideal for entertaining or having an indoor-outdoor lifestyle.

Private parking.

New apartments ready for immediate delivery.

LOCK OFF SYSTEM

Some of the apartments for sale have a lock off system, which allows you to rent one room and use the other without losing privacy or rent the two rooms separately. Ask your Selva advisor if your condo has this system.

FINISHES AND EQUIPMENT

- Marble floor.
- Walls with Chukum finish.
- Windows with aluminum frame.
- Mini split air conditioning
- Closets
- Wooden integral kitchen with natural quartz bar.
- Electric stove with hood, refrigerator, oven and electric boiler.

LOCATION, ALDEA ZAMA

Condominiums in private gated community with clubhouse and amenities. 1.7 Kilometers from the beach, 5 minutes from Tulum Hotel Zone, and the best beach clubs of Mexico. 55 minutes from Playa del Carmen, 90 minutes from Cancun International Airport.

Development located in Aldea Zama, the first planned community in Tulum, with underground services, green areas and cycle path to the hotel zone, downtown area and beach area, just 10 minutes by bicycle, you will not need a car. In addition, Aldea Zama also has a commercial area with restaurants, boutique hotels, cafes and shops of original design.

RESIDENTIAL AMENITIES

- Restaurants
- Mall
- Park for dogs
- Paddle tennis court
- Pool for swimming
- Recreational pool
- Gym and wellness center

- Amphitheater overlooking the jungle
- Bike and walk paths
- Security booth
- Parking for visitors
- 24 hour security and controlled access

REALITY SURPASSES THE RENDERS

This is a real estate development where reality beats renders, it has impeccable quality and views of green areas from its common areas and private terraces.

The renders and photographs presented in this advertisement are of the development in general and do not correspond to a particular unit, to know the specific photographs of the condo of your interest, contact one of our Selva agents and they will send you the specific information of this condo.

If you want to visit this condo and know more about the Aldea Zama area, contact us, it will be a pleasure to advise you on your new investment in Tulum.

#MLSDTU290 #aldeazamalistings #selvacorealty #Tulum #investintulum
#condoforsaletulum #lifestyletulum #liveintulum #greenviewrealestate
#realestateTulum #livetulum #investintulum #tulumvibe #tulumhome
#tulumrealestate #greenrealestate #realestatetulum #condoforsaletulum
#tulumcondosforsale #retireinTulum #secondhomeTulum
#vacationhouseTulum #luxuryrealestatemexico #luxuryrealestateTulum
#aldeazamarealestate #aldeazama #realestatealdeazama

Property details

- Exclusive Parking
- Private Pool
- Integral Kitchen
- Terrace

Amenities

- Clubhouse
- Gym
- Restaurant
- Tennis court
- Controlled access
- Paddle tennis
- Security 24/7

Location





SELVA & Co.
REALTY

MX 984 803 2058 / US 805 308 2900
www.selvacorealty.com