



# Luxury condo with touchless technology and luxury amenities, central park for sale in Zapopan.

<i>ID: MLS-DGL202</i>	<i>Location: Guadalajara</i>
<i>Zone: Puerta Plata</i>	<i>Type: Condos</i>
<i>Bedrooms: 4</i>	<i>Bathrooms: 4.5</i>
<i>Parking(s): 4</i>	<i>Construction: 407 m2 / 4,380.95 ft</i>

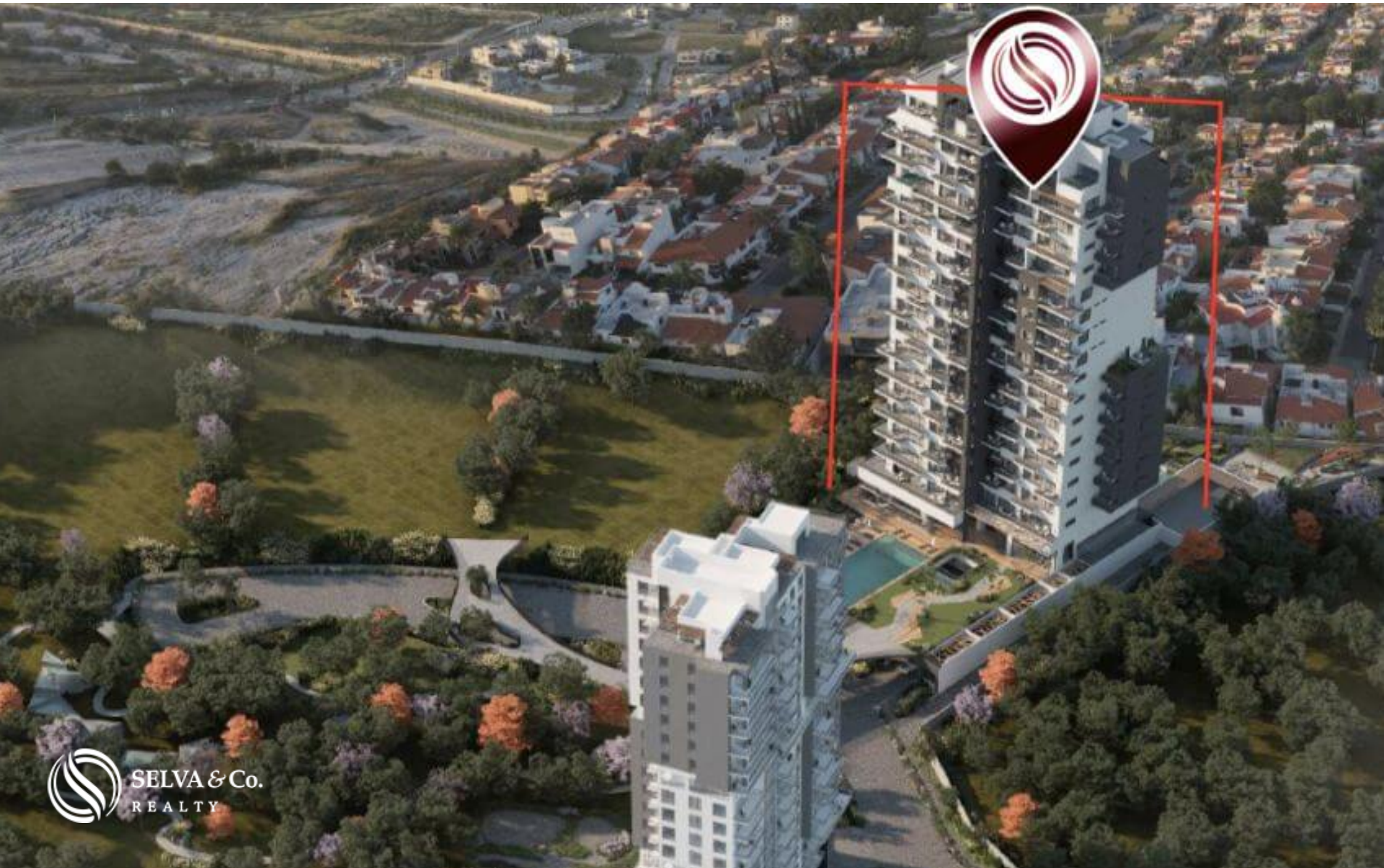


















SELVA & Co.  
REALTY











## PARQUE CENTRAL CENTRAL PARK











Recamaras con ventana  
de piso a techo

Floor to ceiling windows  
in bedrooms





Terrazas con  
vista panoramica

Terraces with  
panormic views





**ENTRADA - ENTRANCE**









SELVA & Co.  
REALTY

**PET  
FRIENDLY**















Areas comunes  
con diseño moderno

Common areas  
modern design





## Description

MLS-DGL202

Luxury condo with touchless technology and luxury amenities, central park for sale in Zapopan.

Apartments with luxury amenities and spaces for the whole family. Premium vertical development made up of a select collection of 5 Towers designed by renowned architecture firms.

## LOCATION PUERTA PLATA

Located in the Diamond Zone, the new landmark and sign of exclusivity of the city. Puerta Plata residential area. Just 15 minutes from the Colomos forest, 10 minutes from Plaza Andares and 42 minutes from the Guadalajara International Airport.

This condominium, has the best road connectivity in the area and proximity to the best shopping centers, hospitals, universities, residential and corporate developments in the city.

## CENTRAL PARK

The Central Park is the main attraction of this development, with more than 9,000 m<sup>2</sup>, green areas of 17,000 m<sup>2</sup> approx, open spaces of more than 25,000 m<sup>2</sup> (terraces, pools, common areas, etc).

## ENJOY THE OUTSIDE

The open spaces that together add up to more than 25,000 m<sup>2</sup>, surround the entire



development in a natural way.

The central park located in its interior is inspired by a concept of forest, which will be settled in its natural terrain, which allows its trees and ornamental vegetation to grow naturally. In addition to this, 17,000 m<sup>2</sup> of green areas are added.

## MICROCLIMATE

An additional benefit that the central park provides is the microclimate that it generates by regulating the temperature of the area. It is projected that thanks to the abundant trees and green areas settled in the development, the temperature will decrease approx. 2 degrees Celsius, on average with the rest of the city.

## SHOPPING MALL

For the comfort of its inhabitants, this condominium has its own shopping center, which can offer multiple services such as cafes, restaurants, gourmet market, terraces and more in a pleasant and casual environment.

## PET FRIENDLY CONDO

Pets are welcome as it is a Pet Friendly development.

## AMENITIES AND SERVICES

- Infinity pool: with lounge area and beds.

- Cycloport: This tower offers ideal protection for your equipment within a convenient



space, this will give you peace of mind and encourage their use by not having to move them in and out of the building each time they are used.

- Motor lobby.

- Reception / Concierge.

- Social room: generous multifunctional space designed to entertain, relax and socialize among residents.

- Catering room: This space is an extension of your condo. A place that you can reserve for a private event or meeting. It is equipped with a professional kitchen for banquets, living room and dining room for your guests.

- Wellness center: massage cabins equipped with dressing rooms, showers and steam area.

-Fitness center: Cabins with strength and cardio equipment, which is complemented by a terrace for outdoor activities.

-Kids playroom: Ideal recreational area to encourage play, exploration and discovery for the children.

## ROAD INNOVATION

The design of its road offers an avant-garde proposal that allows residents to have continuous views of green areas thanks to the wide pedestrian bridges that lead to the central park. They also have a viewpoint and provide pedestrian safety by not having to cross the internal road to access the park or the towers. This is something that will give parents peace of mind knowing that their little ones will not take unnecessary risks.



## HIGHLIGHTS OF THE DEPARTMENT

Bright apartments with large floor-to-ceiling windows that allow each of the most important spaces.

Wide spaces with generous ceilings.

Design with a palette made up of fine woods and natural stones that highlight its beauty with sophistication and delicacy.

Social area with full wall window and access to the terrace that opens to create a larger space ideal for entertaining or having an indoor-outdoor lifestyle.

Parking for 2 to 4 cars depending on the condo.

## LAST GENERATION BUILDING TOUCHLESS EXPERIENCE

Displacement within the tower in touchless experience with facial identification system and QR codes for access to the amenities and elevator areas.

## ANTI-PATHOGEN PROTECTION

This building will offer spaces designed to reduce the spread of pathogens in areas of common use of the tower, providing additional tranquility to its residents.

Entrance with thermographic body temperature and use of face masks.  
monitoring equipment.



Elevators with a disinfection system with patented UV-C technology and Schindler filters, the indoor air is disinfected automatically 24 hours a day.

Reservation of common areas through the concierge or a special app for residents.

Fitness center with personal or couple training cabins in a private and protected environment, the areas will be disinfected after each use to maintain a pathogen-free environment.

The photographs are of the project in general, they do not correspond to a particular unit.

If you want to visit this condo and know more about the Puerta Plata area, contact us, it will be a pleasure to advise you on your new investment in Zapopan.

#MLSDGL202      #Zapopanlistings      #selvacorealty      #luxurycondosZapopan  
#luxurycondosGuadalajara      #condoforsaleZapopan      #lifestyleZapopan  
#liveinZapopan      #greenviewrealestate      #realestateZapopan      #liveZapopan  
#Zapopanrealestate      #greenrealestate      #luxuryrealestateZapopan  
#condoforsaleZapopan #Zapopan #PuertaPlayarealestate #condoforsaleZapopan  
#Zapopanluxuryrealestate      #presalecondosZapopan  
#preconstructioncondosZapopan      #luxuryrealestatemexico  
#luxuryrealestateZapopan



## Property details

- Integral Kitchen
- Luxury finishes
- Pet friendly
- Terrace
- Unfurnished
- Walking closet
- Lap pool
- Panoramic View
- Skyline view
- Underground parking
- Unobstructed view

## Amenities

- Concierge
- Didactic Playroom
- Gym
- Lobby
- Roof garden
- Security 24/7
- Sundeck area
- Controlled access
- Elevator
- Internet Access
- Lounge Area
- Sauna
- Spa

## Location







**SELVA & Co.**  
REALTY

MX 984 803 2058 / US 805 308 2900  
[www.selvacorealty.com](http://www.selvacorealty.com)