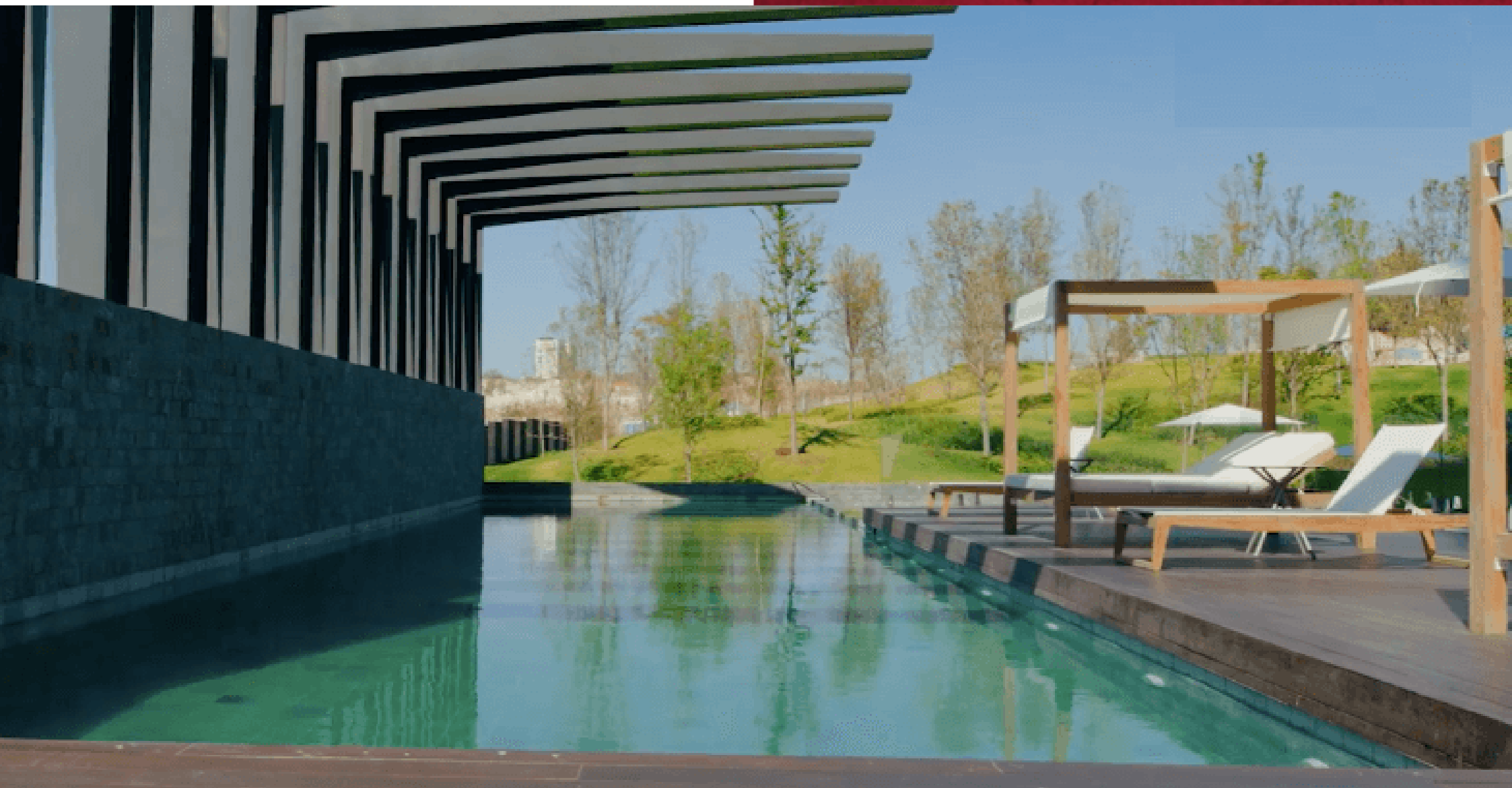




SELVA & Co.
REALTY

www.selvacorealty.com



Luxury condo, floor 10th with panoramic view jacuzzi, gym, wellness center, pool with green views, central park, ready to deliver. For sale

<i>ID: MLS-DGL201</i>	<i>Location: Guadalajara</i>
<i>Zone: Providencia</i>	<i>Type: Condos</i>
<i>Bedrooms: 2</i>	<i>Bathrooms: 2.5</i>
<i>Levels: 19</i>	<i>Parking(s): 2</i>
<i>Construction: 122 m2 / 1,313.21 ft</i>	









Compu Guadalajara 18/1/2021

mensaje fue eliminado

Archivado

ero Terraza Guad... 16/12/2020

VISTAS - VIEWS

6/34

00-10 planes de ...













SELVA & Co.
REALTY

AMENIDADES - AMENITIES



Este mensaje fue eliminado

Antes de...

sa Herrero Terraza Guad...

enas tardes si está disponible para el d...

AREAS COMUNES CON VISTA AL PARQUE COMMON AREAS PARK VIEW

12/07/2020 PDF 100 KB

10/12



ALBERCA CON VISTA AL PARQUE CENTRAL

POOL OVERLOOKING CENTRAL PARK



PARQUE CENTRAL CENTRAL PARK









TERRAZA CON AREAS LOUNGE

LOUNGE AREA IN TERRACE



esta

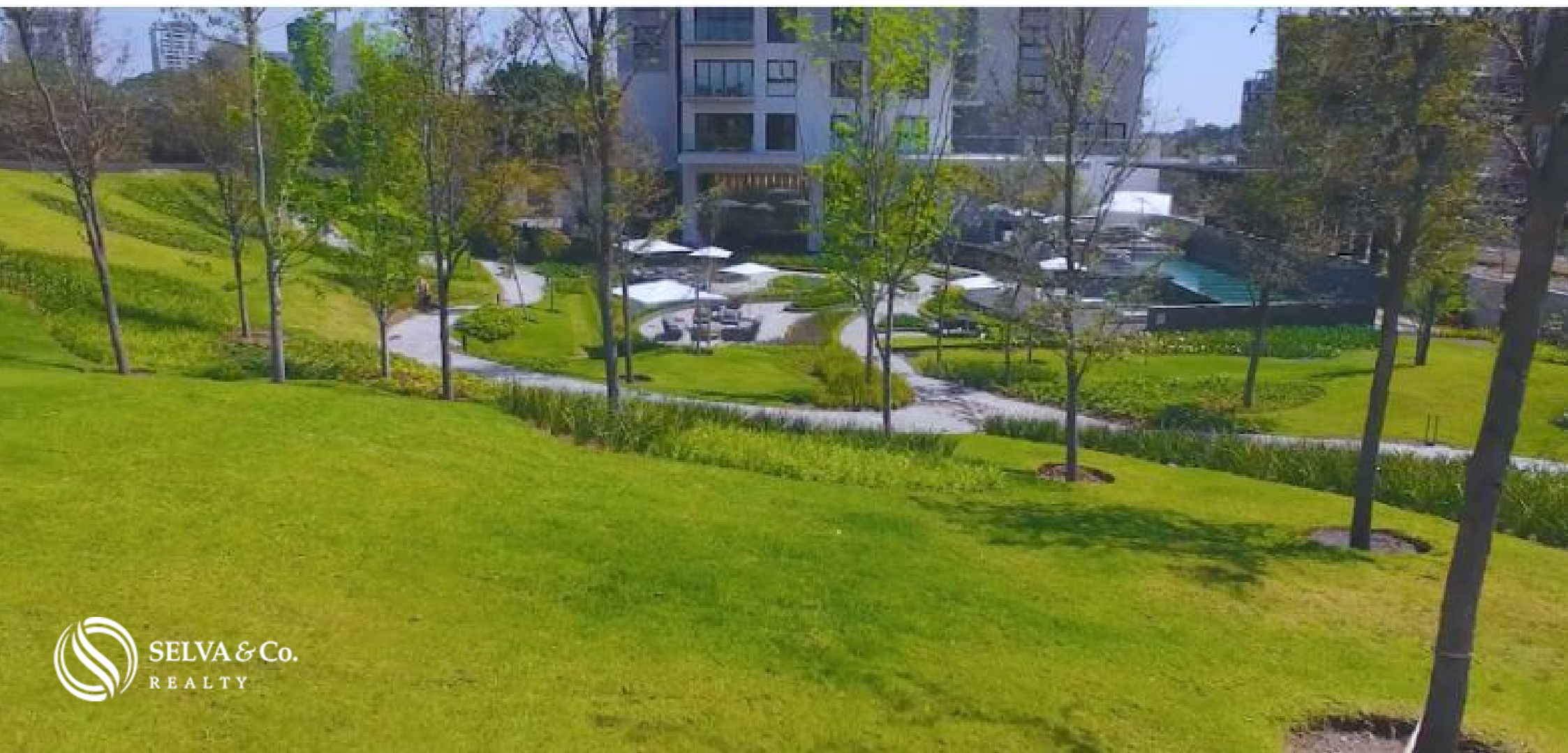
REGADERAS EN AREA DE ALBERCA

SIDE POOL SHOWER



AREA LOUNGE EN EXTERIOR

OUTDOOR LOUNGE





Description

MLS-DGL201

Luxury condo, floor 10th with panoramic view jacuzzi, gym, wellness center, pool with green views, central park, ready to deliver. For sale in Puerta Plata, Zapopan.

Condominium with luxury amenities and spaces for the whole family. Premium vertical development made up of a select collection of 5 Towers designed by renowned architecture firms.

Privileged location and altimetry allow its towers to obtain the best views, with an enviable panoramic view of the most exclusive environment.

19-story tower It stands out for offering a first class lifestyle that guarantees its residents comfort, tranquility and security in a privileged environment.

LOCATION PUERTA PLATA

Located in the Diamond Zone, the new landmark and exclusivity of the city. Puerta Plata residential area. Just 15 minutes from the Colomos forest, 10 minutes from Andares shopping mall and 42 minutes from the Guadalajara International Airport.

Speak of accessibility is to speak of this condo, since it has the best road connectivity in the area and proximity to the best shopping centers, hospitals, universities, residential and corporate developments in the city. To enjoy some time of relaxation.

CENTRAL PARK

Central park of more than 9,000 m², green areas of 17,000 m² approx, open spaces of more than 25,000 m² (terraces, pools, common areas, etc)

The central park located in its interior is inspired by a concept of forest, which will be settled in its natural terrain, which allows its trees and ornamental vegetation to grow naturally. In addition to this, 17,000 m² of green areas are added.

ENJOY THE OUTSIDE

The open spaces that together add up to more than 25,000 m², surround the entire development in a natural way.

This park was created for those who enjoy nature and want to take walks through its walkers listening to the relaxing sound coming from its bodies of water, as well as the song of the birds that will make this their new home.

SHOPPING MALL

For the comfort of its inhabitants, this department has its own shopping center that can offer multiple services such as cafes, restaurants, mini super gourmet, terraces and more in a pleasant and casual environment.

LUXURY TOWER COLLECTION

This development was inspired by exclusivity and sophistication, each tower has been conceptualized by internationally recognized architectural firms to form part of a luxurious collection.

PET FRIENDLY CONDO IN GUADALAJARA

Pets are welcome as it is a Pet Friendly development.

AMENITIES AND SERVICES

- Controlled access, security system with state-of-the-art equipment throughout the development.

- Motor lobby.

- Reception / Concierge.

- Multifunctional room, space intended as a social area suitable for any need.

- Business center, space designed to hold meetings, connect and project your presentations in an optimal and exclusive environment.

- Pool, overlooking green areas, offers an ideal environment to enjoy a time of relaxation.
- Wellness Center, on the tenth floor, equipped with a panoramic Jacuzzi, massage rooms, dressing rooms, all framed by an unparalleled view.
- Fitness center, equipped with cardio and strength equipment with a terrace for outdoor activities.

- Playroom, space for the little ones to awaken their creativity and imagination.

FINISHES

Walnut wood, covered and floors in imported natural stones, selected with the intention of offering an unbeatable Premium experience.

Storage and private parking (2-3 parking spaces, depending on the unit)

FINISHED APARTMENTS

Finished apartments, ready for immediate delivery.

#MLSDGL201 #Guadalajaralisting #selvacorealty #investinGuadalajara
#condoforsaleGuadalajara #lifestyleGuadalajara #liveinGuadalajara
#greenviewrealestate #realestateGuadalajara #liveGuadalajara
#investinGuadalajara #Guadalajaravibe #Guadalajarahome #Guadalajaraealestate
#luxurylivingGuadalajara #luxuryrealestateGuadalajara #condoforsaleGuadalajara
#Guadalajara #puertaplata #Guadalajararealestate #Guadalajabroker
#Guadalajara

Property details

- Balcony
- Luxury finishes
- Pet friendly
- Storage
- Unobstructed view
- Covered parking
- Panoramic View
- Skyline view
- Unfurnished

Amenities

- Concierge
- Elevator
- Internet Access
- Lobby
- Spa
- Swimming Pool
- Didactic Playroom
- Gym
- Jacuzzi
- Security 24/7
- Sundeck area
- Yoga area

Location





SELVA & Co.
R E A L T Y

MX 984 803 2058 / US 805 308 2900

www.selvacorealty.com