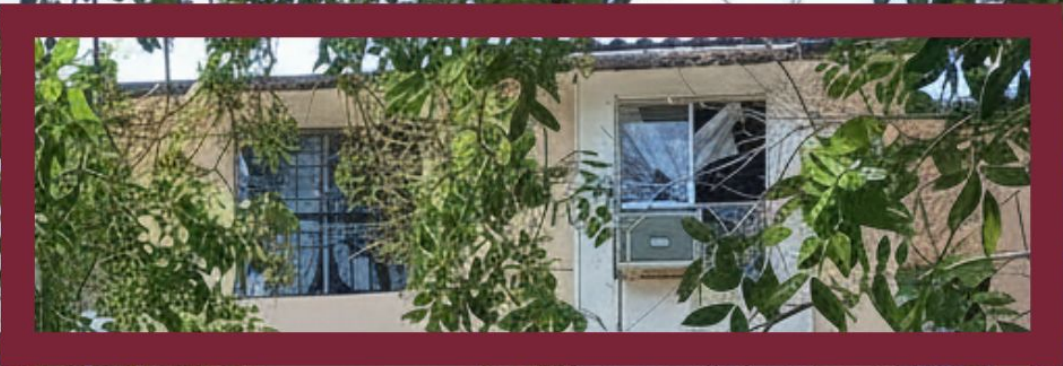
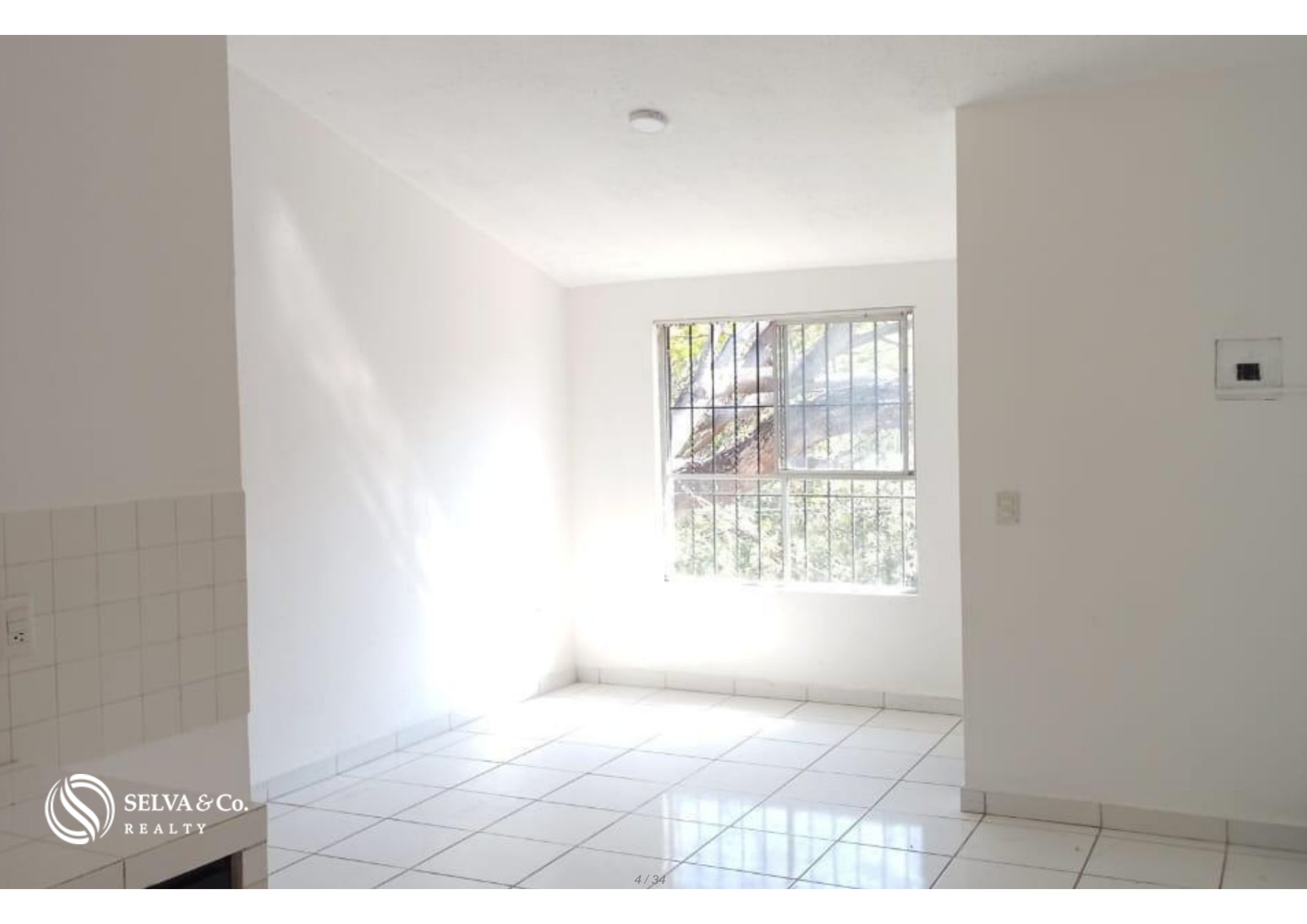




Recently remodeled condo on the 4th floor, for sale

<i>ID: ERHU220</i>	<i>Location: Huatulco</i>
<i>Zone: Sector I</i>	<i>Type: Condos</i>
<i>Bedrooms: 2</i>	<i>Bathrooms: 1</i>
<i>Parking(s): 1</i>	<i>Construction: 80 m2 / 861.12 ft</i>



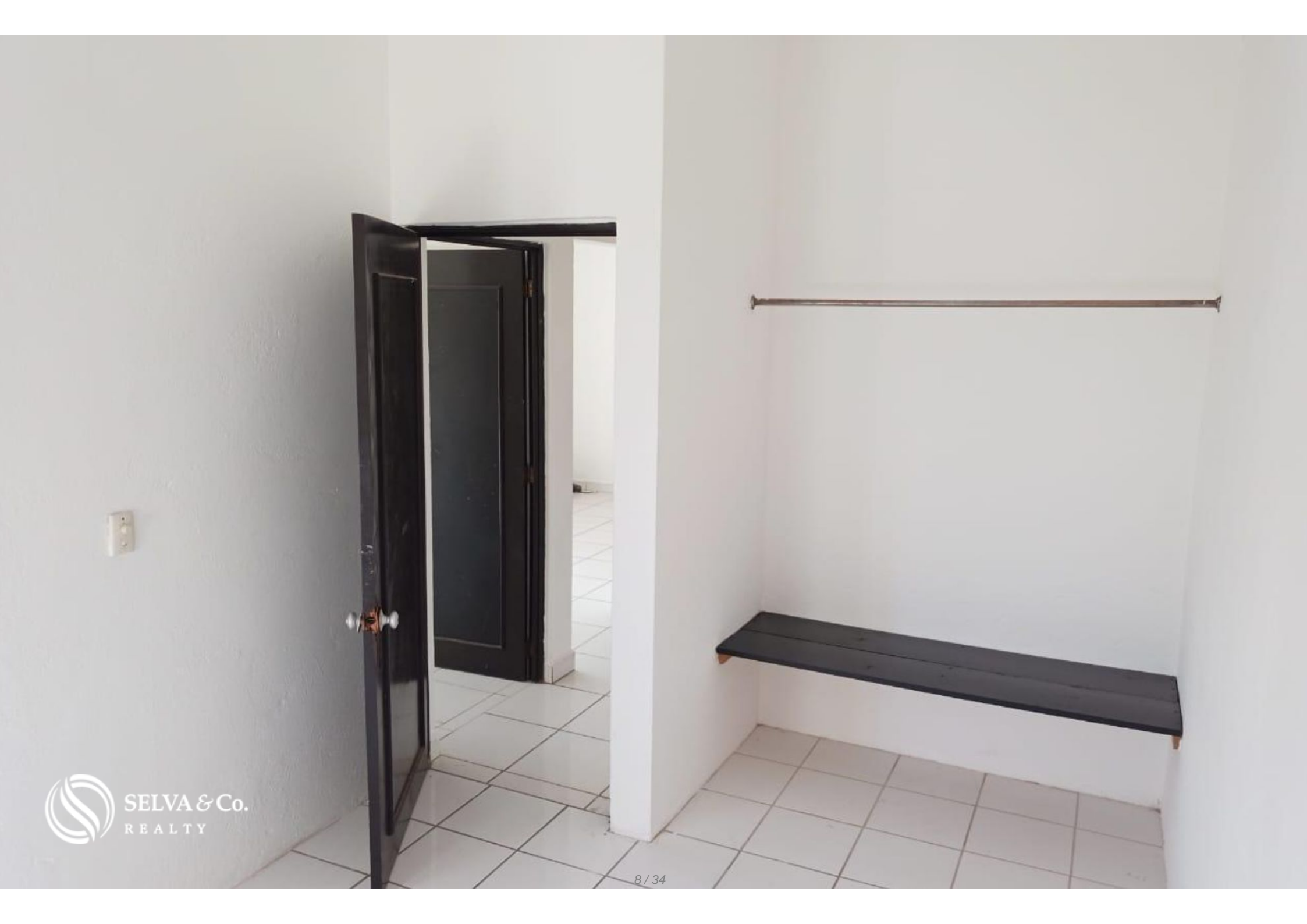








 SELVA & Co.
REALTY











**La Crucecita
Downtown**


Condo

**Marina Chahué
Marina**

**Playa Chahué
Beach**





























La Cruccecita Downtown



Marina Chahue Marina



Description

ERHU220 Brenda Gómez

Recently remodeled condo on the 4th floor, for sale

Condo for sale, recently remodeled, with functional spaces. Located just minutes from commercial areas and Bahía Chahué, offering connectivity and quality of life in a coastal setting.

FEATURES OF THE CONDO

Bright condo designed to maximize natural light

2 bedrooms

Laundry area

4th floor

Unassigned parking space

Located in Sector I

LOCATION

Condo for sale in Sector I, Huatulco, Oaxaca, Mexico.

5 minutes to downtown La Crucecita

5 minutes to Chahué Beach and Marina

20 minutes to Huatulco International Airport

READY FOR IMMEDIATE DELIVERY

Condo for sale, unfurnished.

OFFICIAL PRICE

The official price of this property is \$1,600,000 Pesos, prices in US dollars are provided as a reference. For purchase, the exchange rate of the day will be applied.

Some items and finishes may or may not be included depending on your final agreement with the seller.

Prices are subject to change without notice. Contact us to send you updated information.

Schedule your appointment to visit the area or call us to answer your questions.

Property details

- Exclusive Parking

- Laundry room

Location





SELVA & Co.
R E A L T Y

MX 984 803 2058 / US 805 308 2900

www.selvacorealty.com