



**SELVA & Co.**  
REALTY

[www.selvacorealty.com](http://www.selvacorealty.com)



# Apartment, excellent location, for sale, Benito Juárez, Mexico City

<i>ID: DCM286-3</i>	<i>Location: Mexico City</i>
<i>Zone: Benito Juarez</i>	<i>Type: Condos</i>
<i>Bedrooms: 2</i>	<i>Bathrooms: 2</i>
<i>Construction: 89 m2 / 958.00 ft</i>	



SELVA & Co.  
REALTY



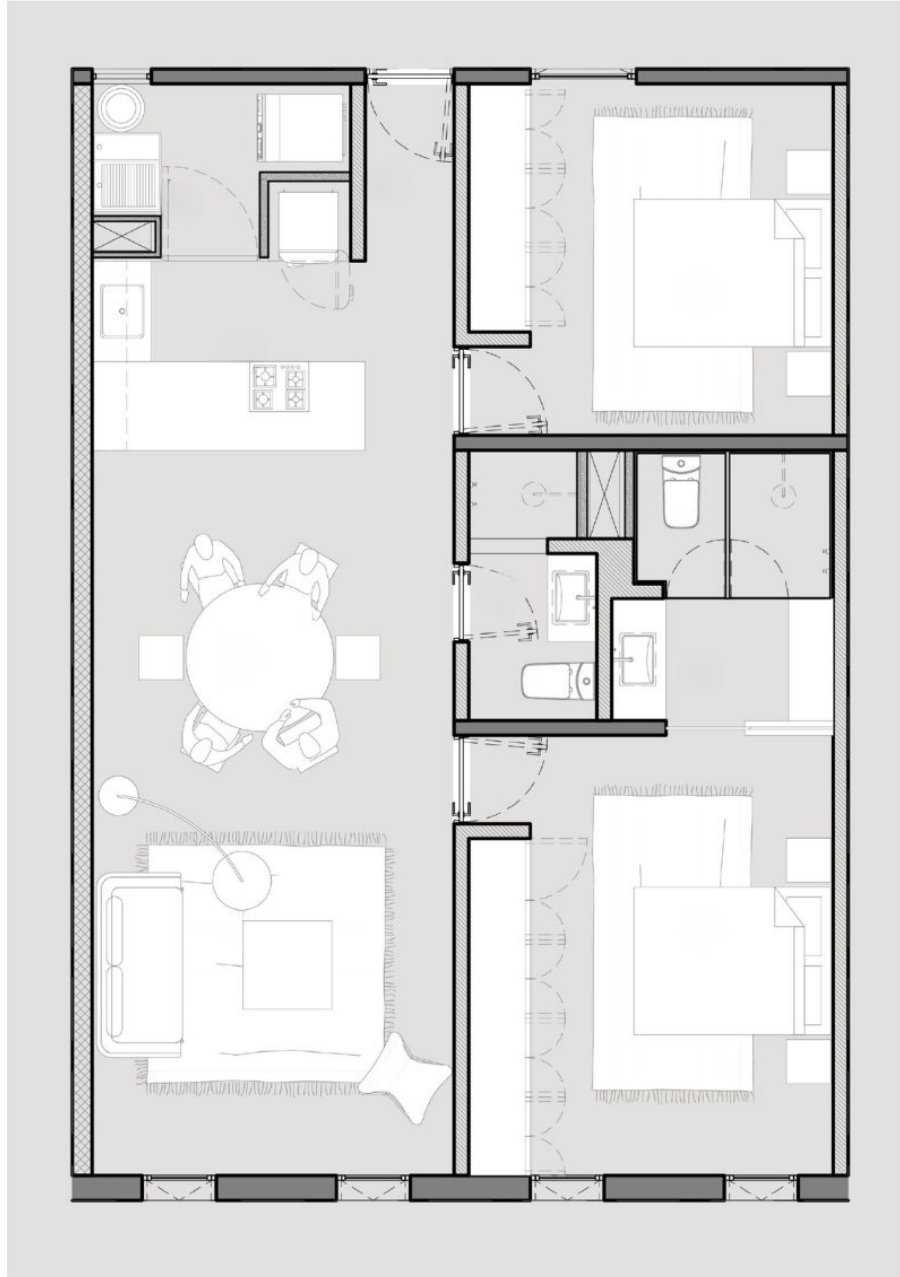












# Bosque de Chapultepec

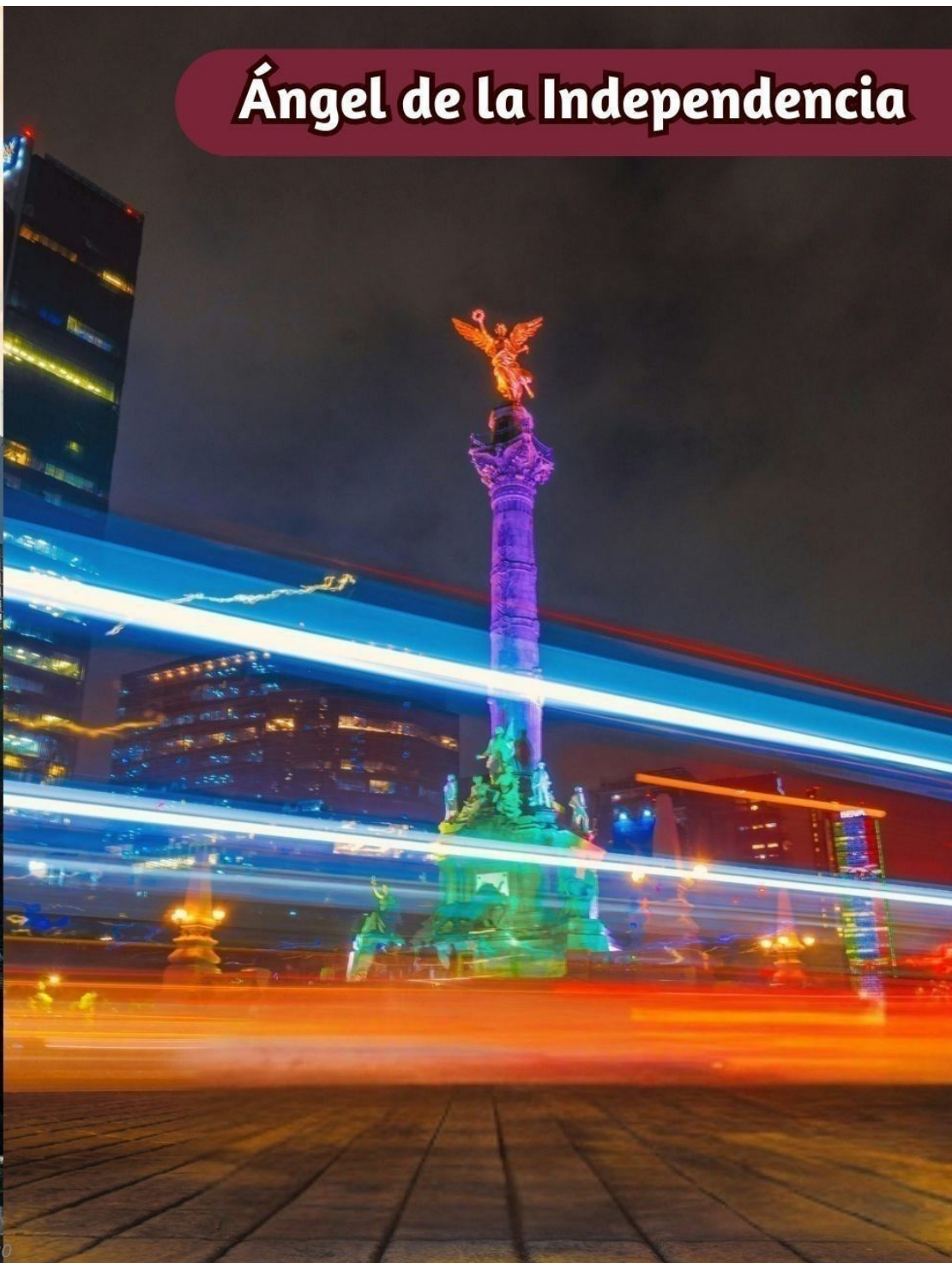


**Ángel de la  
Independencia**

**Bosque de  
Chapultepec**



# Ángel de la Independencia



## Description

DCM286-3

Apartment, excellent location, for sale, Benito Juárez, Mexico City

Condo for sale in a low-density residential development, ideal for both residential use and investment. Located in an urban area with high real estate demand and strong growth potential.

### FEATURES OF THE CONDO

Bright apartment designed to maximize natural light

Entrance

Kitchen

Dining area

Living area

Bathroom

Primary bedroom

Laundry room

Staircase (ask for availability)

Balcony (ask for availability)

Roof garden (ask for availability)

## AMENITIES AND SERVICES

Pedestrian access

Vehicle access

Parking

Bicycle parking

Security

Elevator

Stairs

Bathroom

## LOCATION

Pre-construction apartment for sale in Benito Juárez, Mexico City, Mexico.

30 minutes to Chapultepec Forest

30 minutes to the Angel of Independence

35 minutes to Mexico City International Airport

## INVESTMENT

Condo available for pre-sale

## OFFICIAL PRICE

The official price of this property is 7,073,190 Pesos, prices in US dollars are provided as a reference. For purchase, the exchange rate of the day will be applied.

The images used for this advertisement are from the general project and do not correspond to any particular residence.

Prices may vary according to the progress of construction. Prices are subject to change without notice. Contact us to send you the price list and updated information.

Schedule your appointment to visit the area or call us to answer your questions.

## Property details

- Exclusive Parking
- Laundry room

- Integral Kitchen

## Amenities

- Controlled access

- Elevator

# Location





**SELVA & Co.**  
REALTY

MX 984 803 2058 / US 805 308 2900

[www.selvacorealty.com](http://www.selvacorealty.com)