



Single-Family Lot within a Gated Residential Community with Golf Course in Mérida

<i>ID: ELME203</i>	<i>Location: Yucatán</i>
<i>Zone: Merida Progreso Highway</i>	<i>Type: Lots</i>
<i>Land: 484 m2 / 5,209.78 ft</i>	





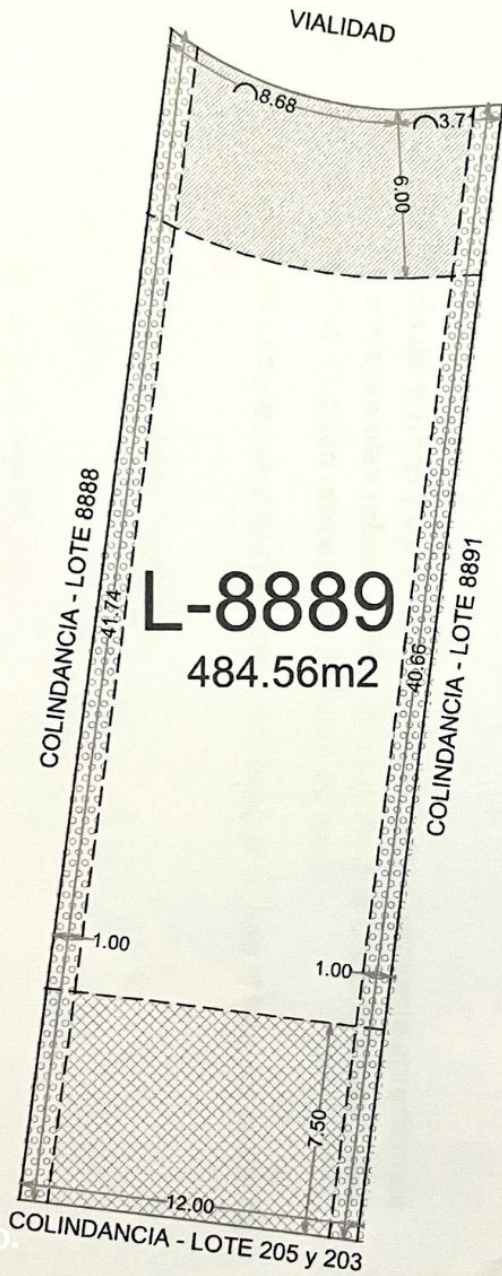
TERRENO - LOT



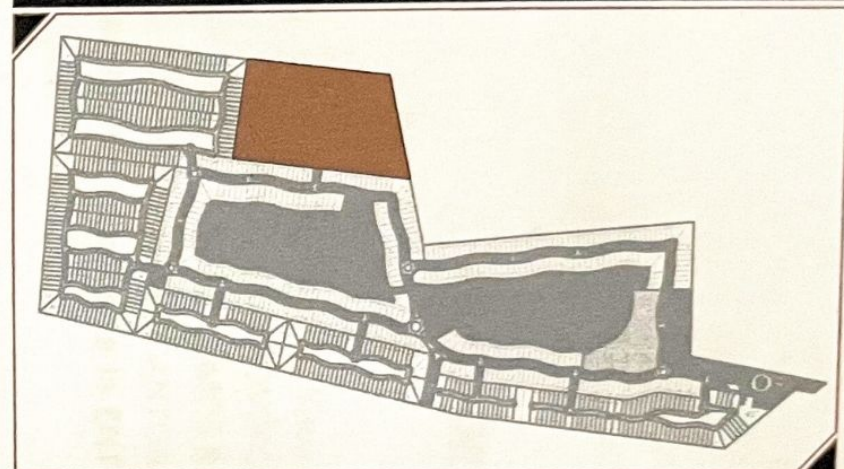




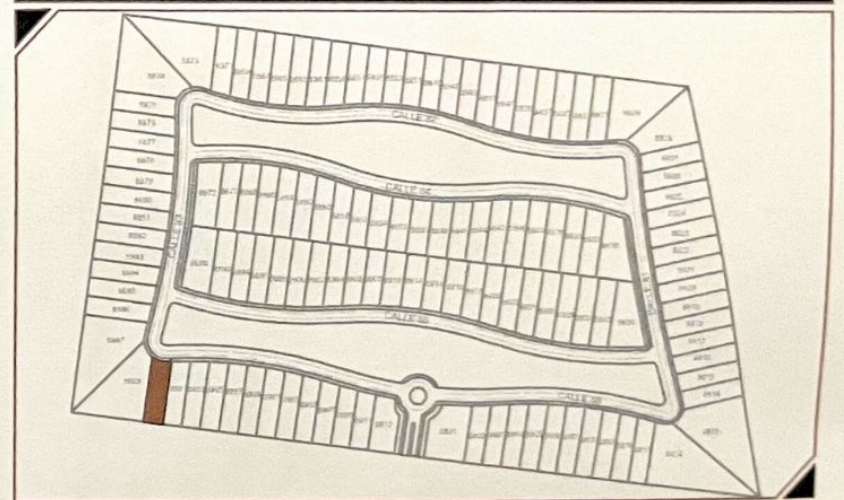
484.56 m2



UBICACIÓN EN CONJUNTO



UBICACIÓN EN ZONA



CUADRO DE ÁREAS

LOTE	M ² TERRENO	
8889	484.56 m ²	
	COTAS Metros	ESCALA 1:300





Casa club - Club house



Carretera Mérida-progreso



Puerto Chelem

Pig Beach

Progreso

Chicxulub puerto

**Autódromo
Yucatán**



TERRENO - LOT







Bar



Restaurante - Restaurant



Salón de Jovenes - Juniors room



Club de niños - Kids club



Centro de negocios - *Bussines Center*



Spa



Gimnasio - Gym



Description

ELME203 Gabriela Pacheco

Single-Family Lot within a Gated Residential Community with Golf Course in Mérida

Single-family lot ideal for building the home of your dreams in Mérida.

Located within a private residential community featuring a golf course, clubhouse, pool, and exclusive amenities, along the Mérida-Progreso highway.

LOT FEATURES

Utilities available at lot line

Tree-lined Park View

Land use: Single-family

Frontage: 12 meters

Depth: 40.40 meters

Total area: 484.56 m²

Orientation: North?South

RESIDENTIAL AMENITIES

Clubhouse

9-hole golf course

Family pool

Gym

Sauna and steam room

Spa

Children area and teens area

Restaurant

Hole 10 bar

Tennis courts

Paddle courts

Wide tree-lined avenues

Guardhouse with controlled access

LOCATION

Single-family lot for sale in a gated residential community along the Mérida-Progreso highway, Mérida, Yucatán, Mexico.

15 minutes from Progreso

15 minutes from Pig Beach in Progreso

25 minutes from Downtown Mérida

PROPERTY STATUS

Title deed, legal certainty

OFFICIAL PRICE

The official price of this property is 2,250,000 Pesos, prices in US dollars are provided as a reference. For purchase, the exchange rate of the day will be applied.

The images used for this advertisement are from the general project and do not correspond to any particular plot of land.

The images presented are for illustrative purposes and may differ from the final product in features and location.

Prices are subject to change without notice.

Schedule your appointment to visit the area or call us to answer your questions.

Amenities

- Clubhouse
- Golf Course
- Lounge Area
- Playground for children
- Controlled access
- Gym
- Paddle tennis
- Restaurant

- Roof garden
- Spa
- Tennis court

- Sauna
- Swimming Pool

Location





SELVA & Co.
REALTY

MX 984 803 2058 / US 805 308 2900

www.selvacorealty.com