



**SELVA & Co.**  
REALTY

[www.selvacorealty.com](http://www.selvacorealty.com)



# Apartment near the sea for sale, Bahía Chahué, Huatulco

<i>ID: DHU255-1</i>	<i>Location: Huatulco</i>
<i>Zone: Chahue Bay</i>	<i>Type: Condos</i>
<i>Bedrooms: 1</i>	<i>Bathrooms: 2</i>
<i>Construction: 74 m2 / 796.54 ft</i>	











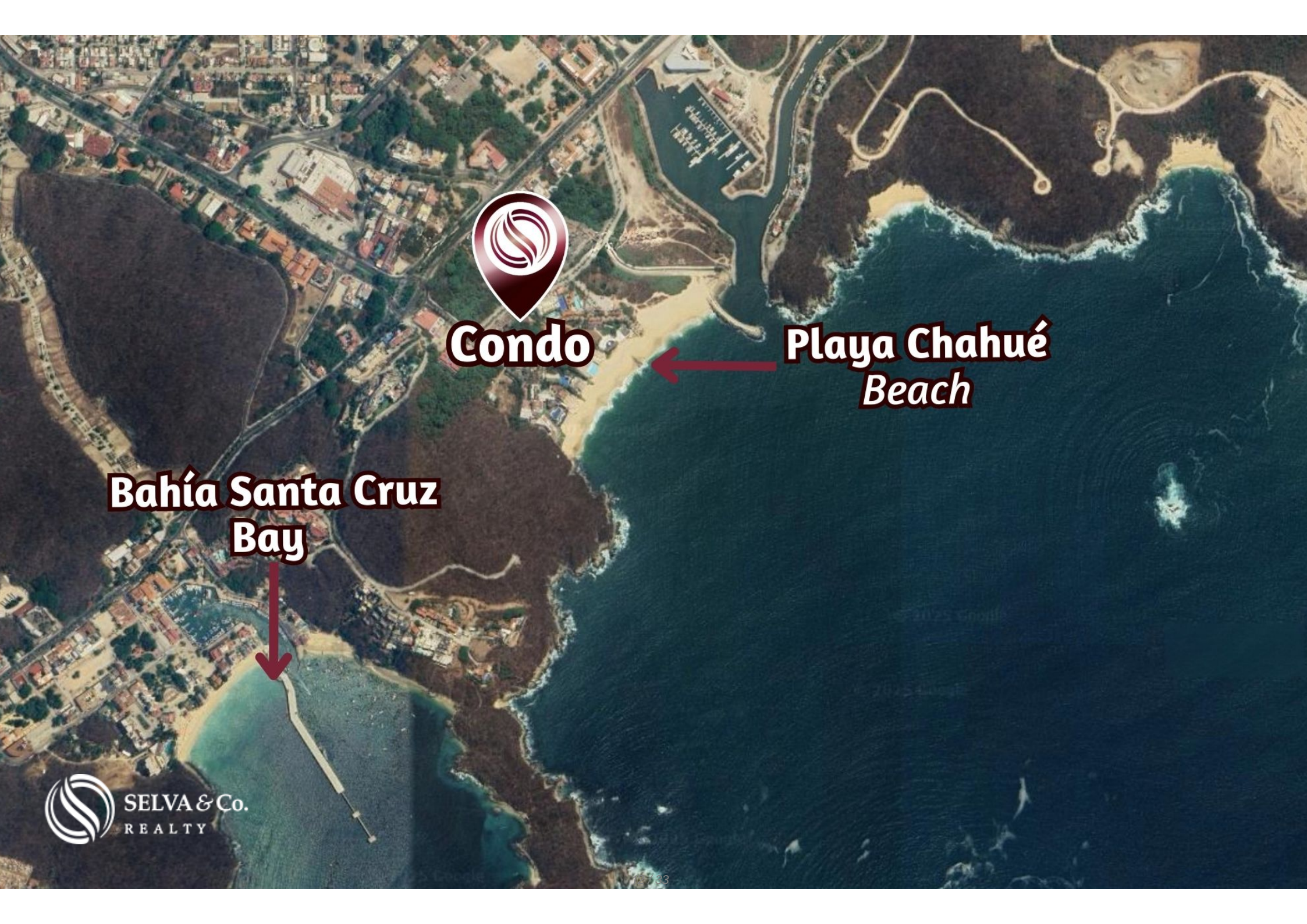


SELVA & Co.  
REALTY





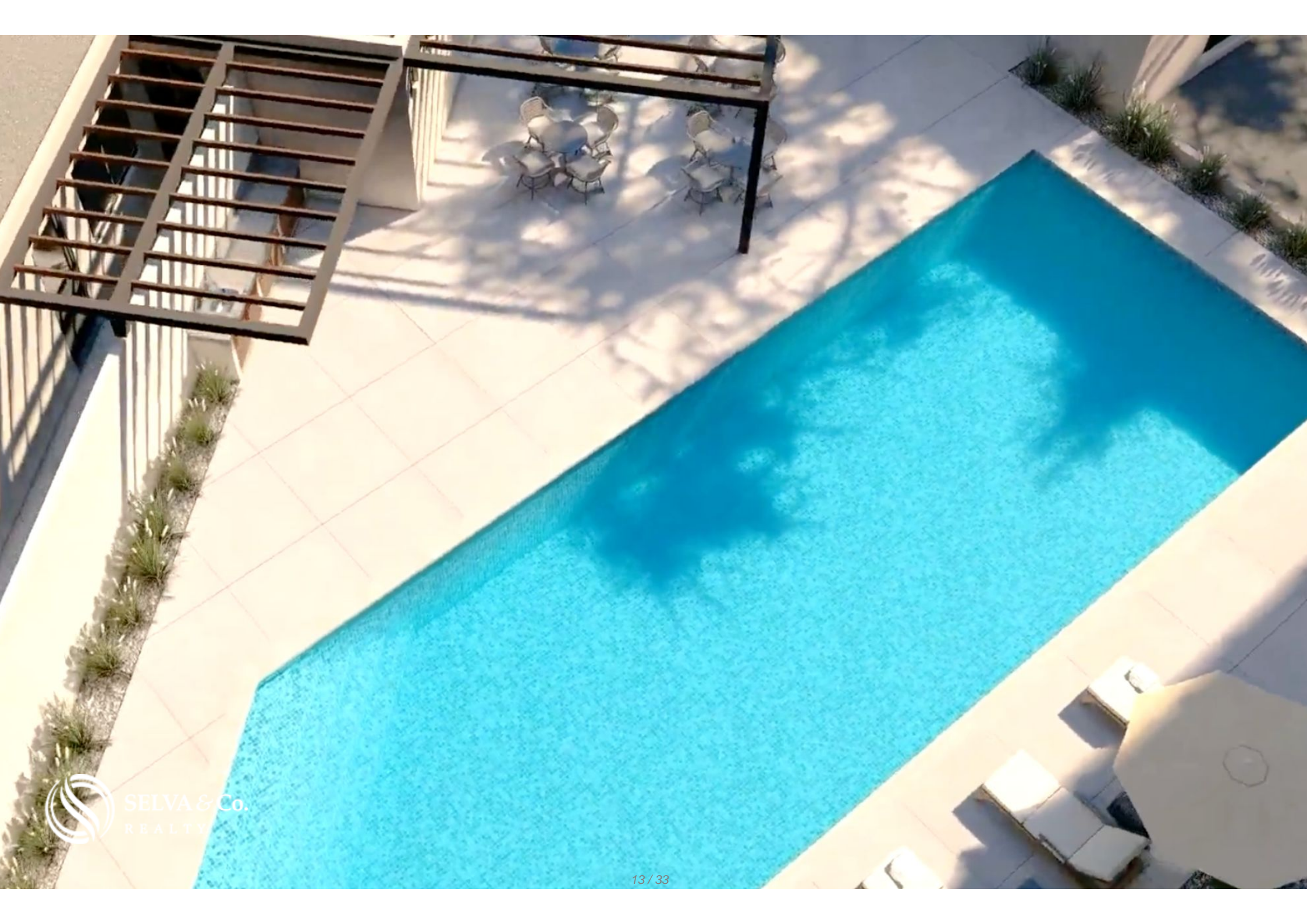




**Condo**

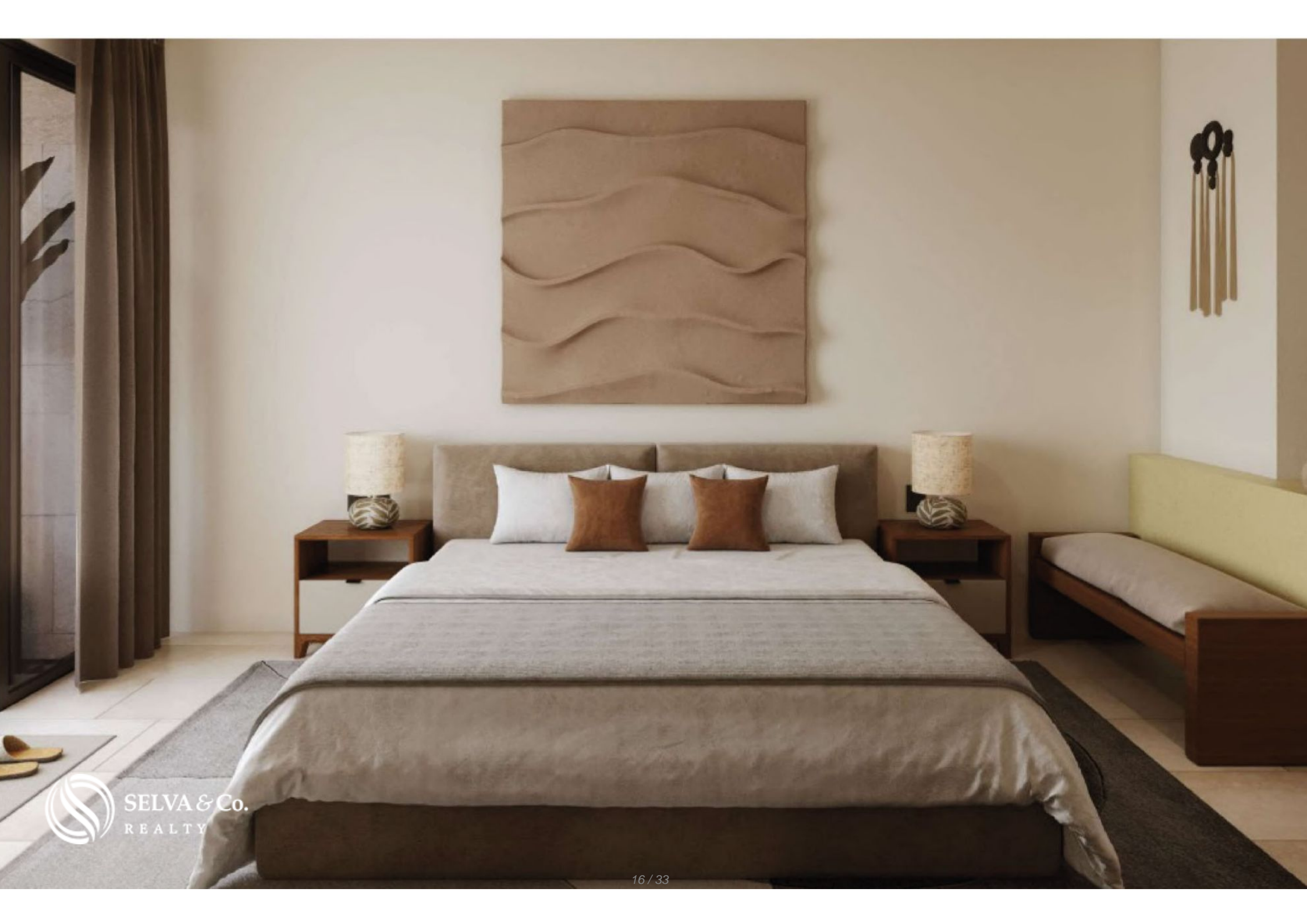
**Playa Chahué  
Beach**

**Bahía Santa Cruz  
Bay**















SELVA & Co.  
REALTY









# La Cruccecita Downtown



# Playa Chahué Beach



# Bahía Santa Cruz Bay

# Playa Chahué Beach



## Description

DHU255-1

Apartment near the sea for sale, Bahía Chahué, Huatulco

Condo for sale, ideal for those seeking a beach lifestyle with modern amenities and proximity to the ocean. The development includes a pool, lounging areas, and commercial spaces, making it an attractive investment opportunity in a high-traffic tourist area.

### FEATURES OF THE CONDO

Bright apartment designed to maximize natural light

Terrace

Living room

Dining room

Kitchen

Bedroom

Bathroom

## AMENITIES AND SERVICES

Swimming pool

Lounge chair area

Rest area

Access to services from restaurants and retail spaces

## LOCATION

Apartment for sale in Bahía Chahué, Huatulco, Oaxaca, Mexico.

5 minutes walking from Chahué Beach

5 minutes to Santa Cruz Bay

20 minutes to Huatulco International Airport

## INVESTMENT

Condo available for pre-sale

## OFFICIAL PRICE

The official price of this property is \$4,880,000 Pesos, prices in US dollars are provided as a reference. For purchase, the exchange rate of the day will be applied.

The images used for this advertisement are from the general project and do not correspond to any particular residence.

Prices may vary according to the progress of construction. Prices are subject to change without notice. Contact us to send you the price list and updated information.

Schedule your appointment to visit the area or call us to answer your questions.

## Property details

- Luxury finishes

- Terrace

## Amenities

- Roof garden

- Sundeck area

- Shopping Plaza inside de development

- Swimming Pool

# Location





**SELVA & Co.**  
R E A L T Y

MX 984 803 2058 / US 805 308 2900

[www.selvacorealty.com](http://www.selvacorealty.com)