

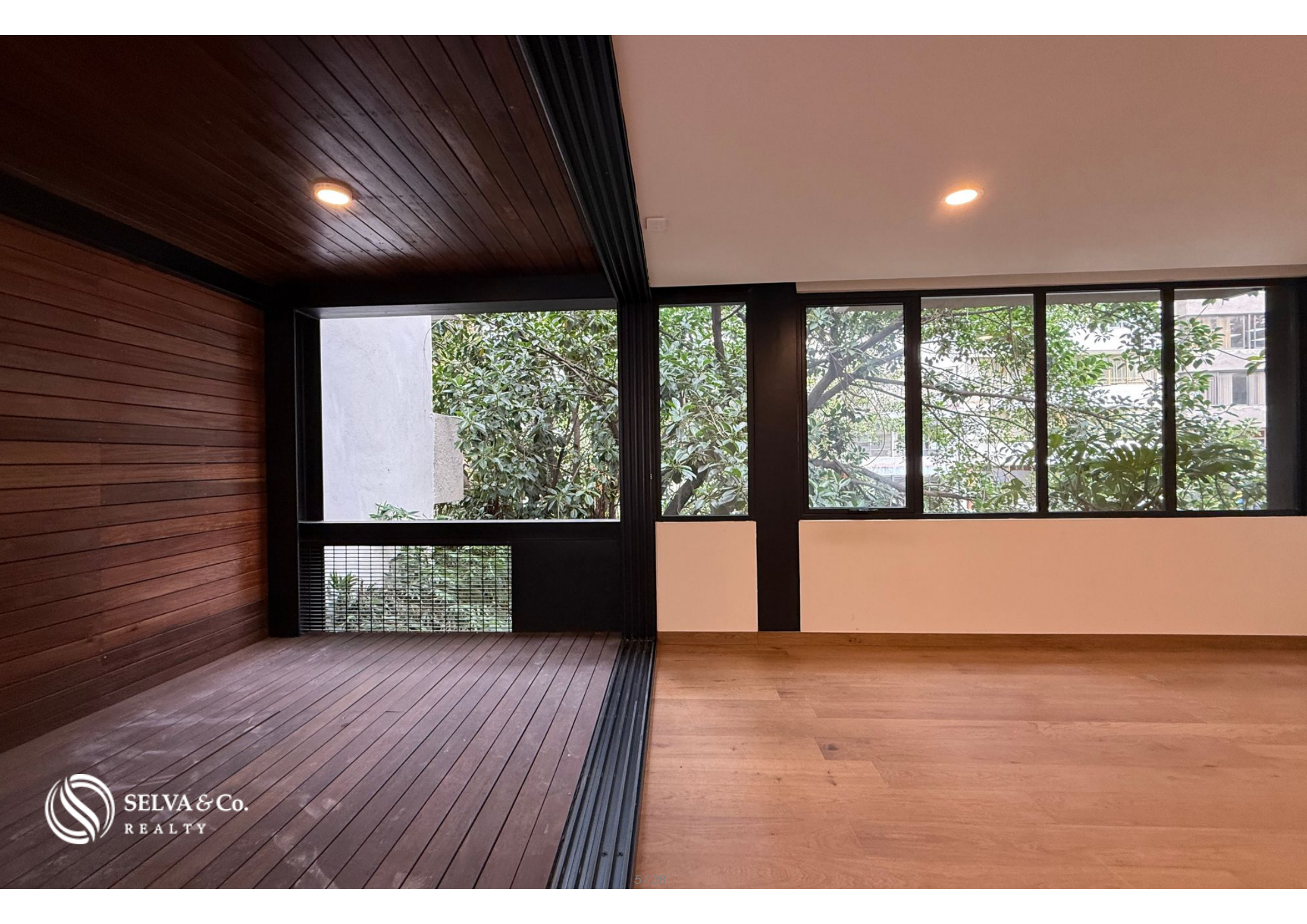


# Condo with terrace and social area for sale, Polanco, CDMX

<i>ID: DCM227-5</i>	<i>Location: Mexico City</i>
<i>Zone: Polanco</i>	<i>Type: Condos</i>
<i>Bedrooms: 2</i>	<i>Bathrooms: 2.5</i>
<i>Parking(s): 2</i>	<i>Construction: 192 m2 / 2,066.69 ft</i>





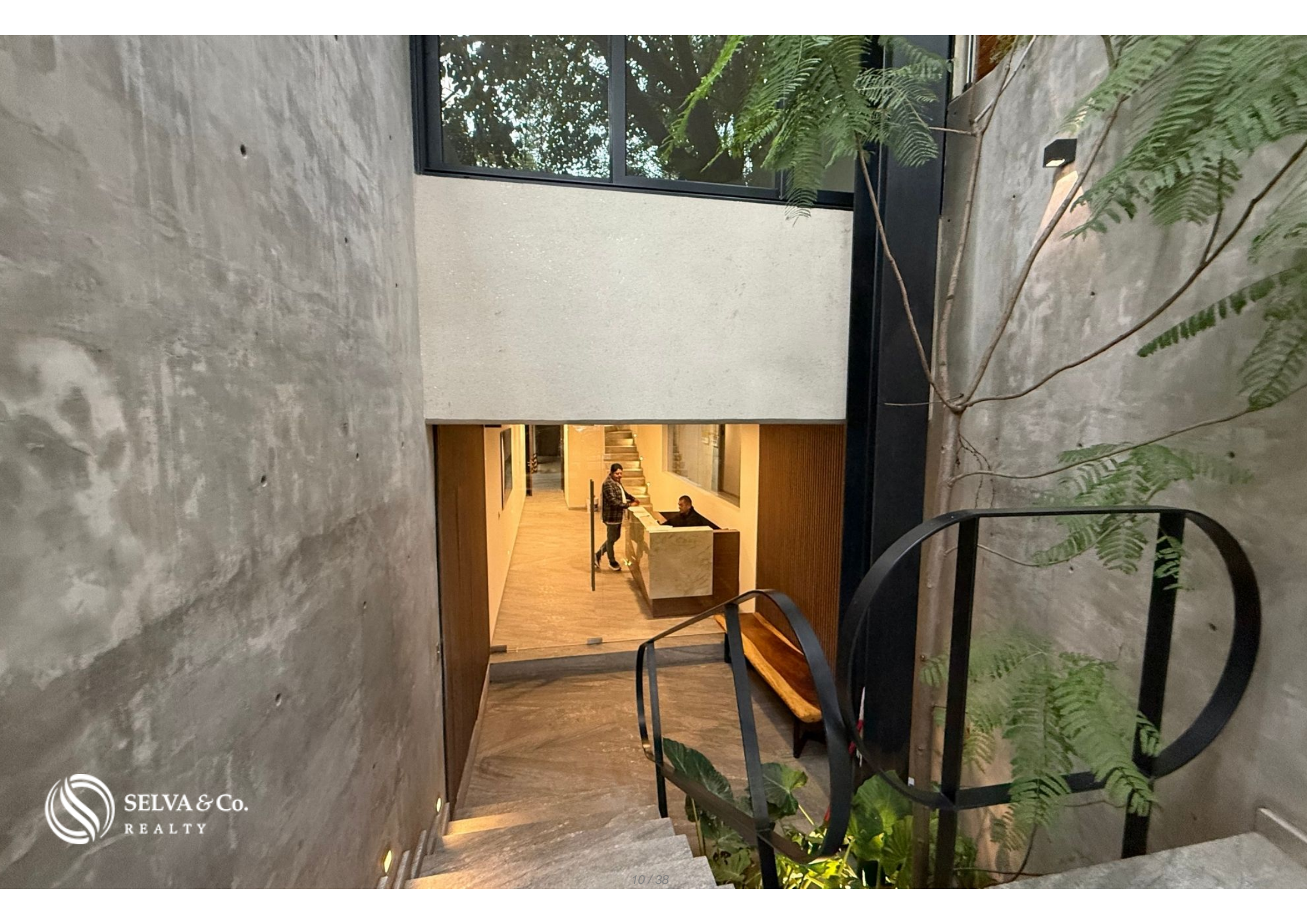


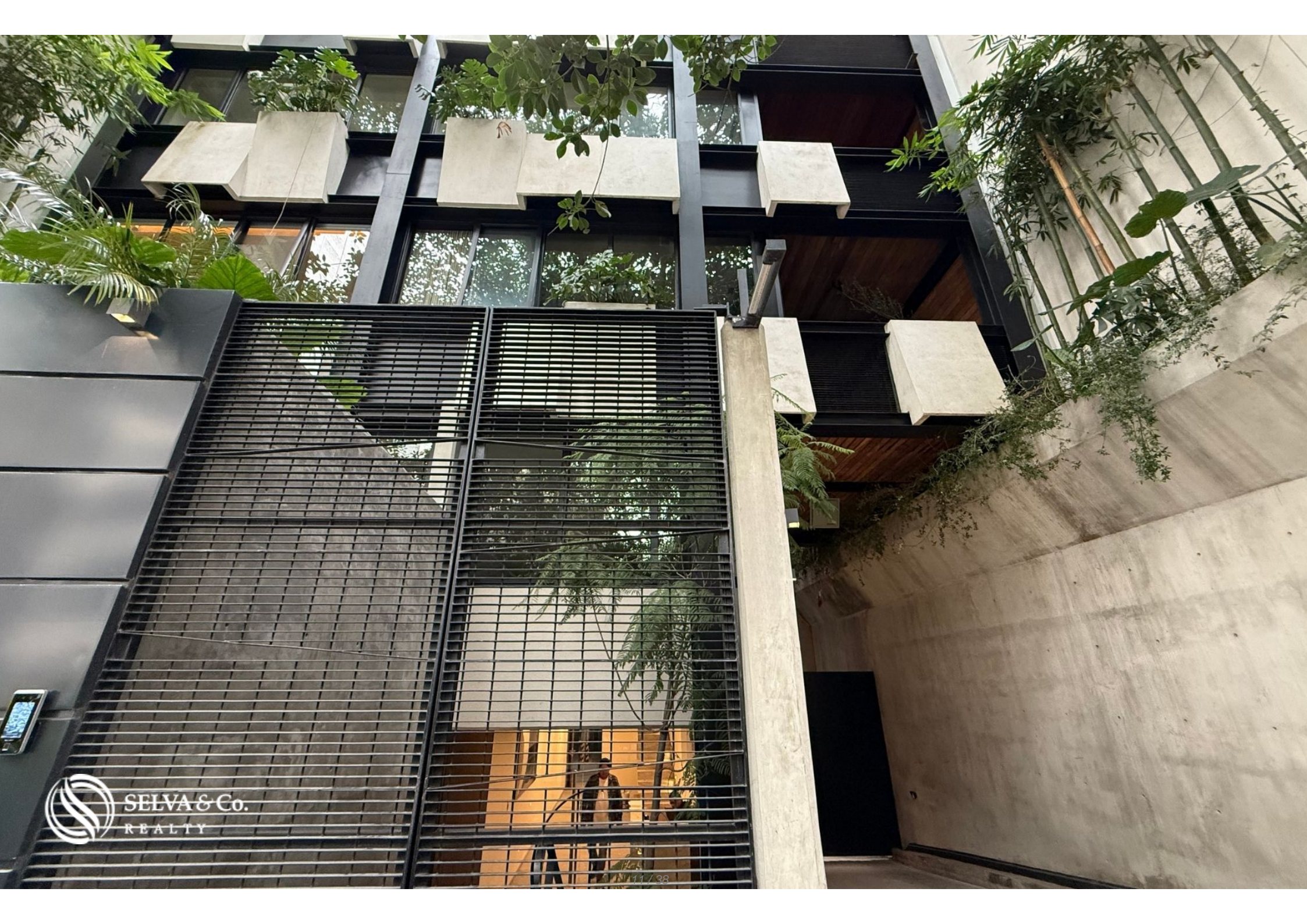












 SELVA & Co.  
REALTY



**Condo**

**Museo Nacional de  
Antropología  
Museum**

**Zoológico de  
Chapultepec  
Zoo**





























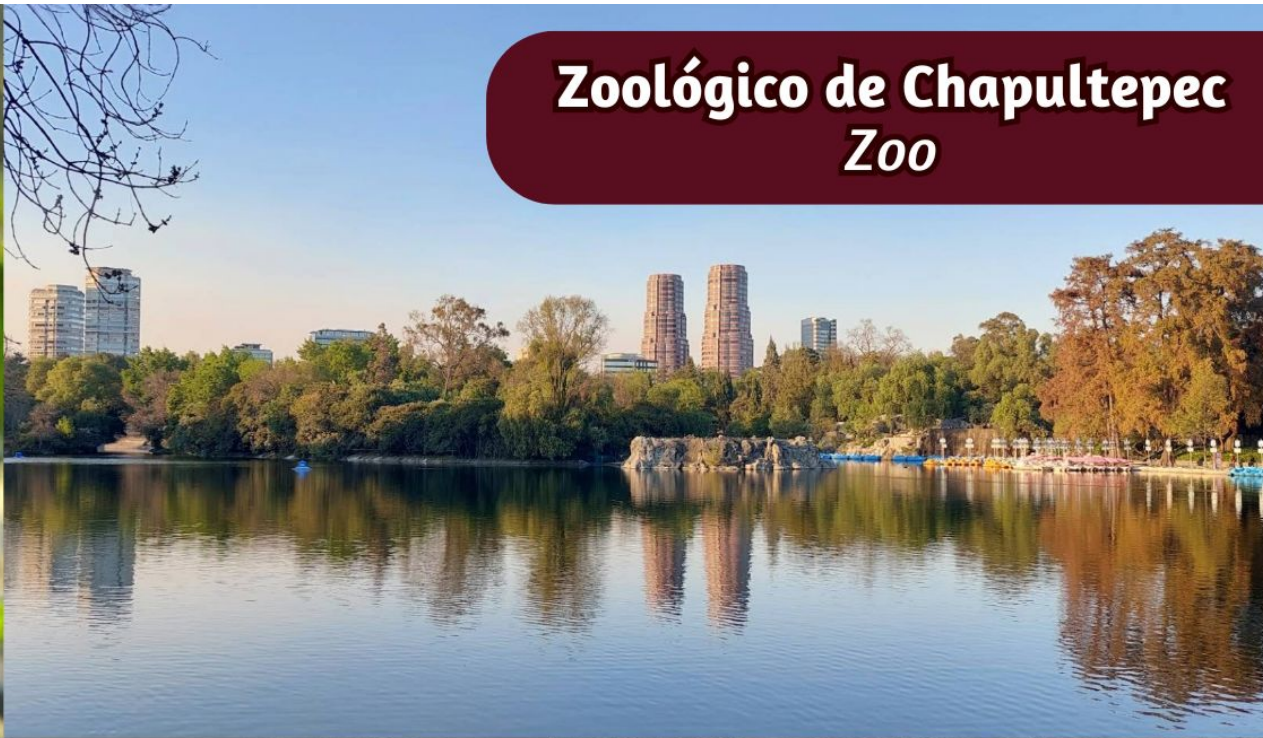






# Museo Nacional de Antropología Museum





# Zoológico de Chapultepec Zoo



 SELVA & Co.  
REALTY



## Description

DCM227-5

Condo with terrace and social area for sale, Polanco, CDMX

Condo with an excellent location, underground parking, and a modern, eco-friendly design.

### FEATURES OF THE CONDO

Bright condo designed to maximize natural light.

Master bedroom with a view of Schiller Street.

Master bedroom with en-suite bathroom, walk-in closet, and ample space.

Private parking for 2 cars

Terrace

Social area

Living-dining room

Kitchen

Storage room

Service room with full bathroom

## AMENITIES AND SERVICES

Underground parking

Common bicycle parking

Elevator

24/7 security

Controlled access

CCTV system

Environmentally friendly building

Planters in common areas

Electric car charging station preparation

Water reuse system for irrigation in common areas

LED lighting throughout the building for low energy consumption

Motion sensors for lighting in common areas

Low water consumption bathroom fixtures

Eco-friendly elevator with low energy use

## LOCATION

Condo for sale in Polanco, México City, México

10 minutes to Chapultepec Zoo

10 minutes to the National Museum of Anthropology

40 minutes to Mexico City International Airport

## READY FOR IMMEDIATE DELIVERY

Departamento for sale.

## OFFICIAL PRICE

The official price of this property is \$19,200,000 Pesos, prices in US dollars are provided as a reference. For purchase, the exchange rate of the day will be

applied.

Some items and finishes may or may not be included depending on your final agreement with the seller.

Prices are subject to change without notice. Contact us to send you updated information.

Schedule your appointment to visit the area or call us to answer your questions.

## Property details

- Covered parking
- Integral Kitchen
- Storage
- Walking closet
- Exclusive Parking
- Service room
- Terrace

## Amenities

- Controlled access
- Elevator
- Eco friendly
- Security 24/7

## Location





**SELVA & Co.**  
REALTY

MX 984 803 2058 / US 805 308 2900

[www.selvacorealty.com](http://www.selvacorealty.com)