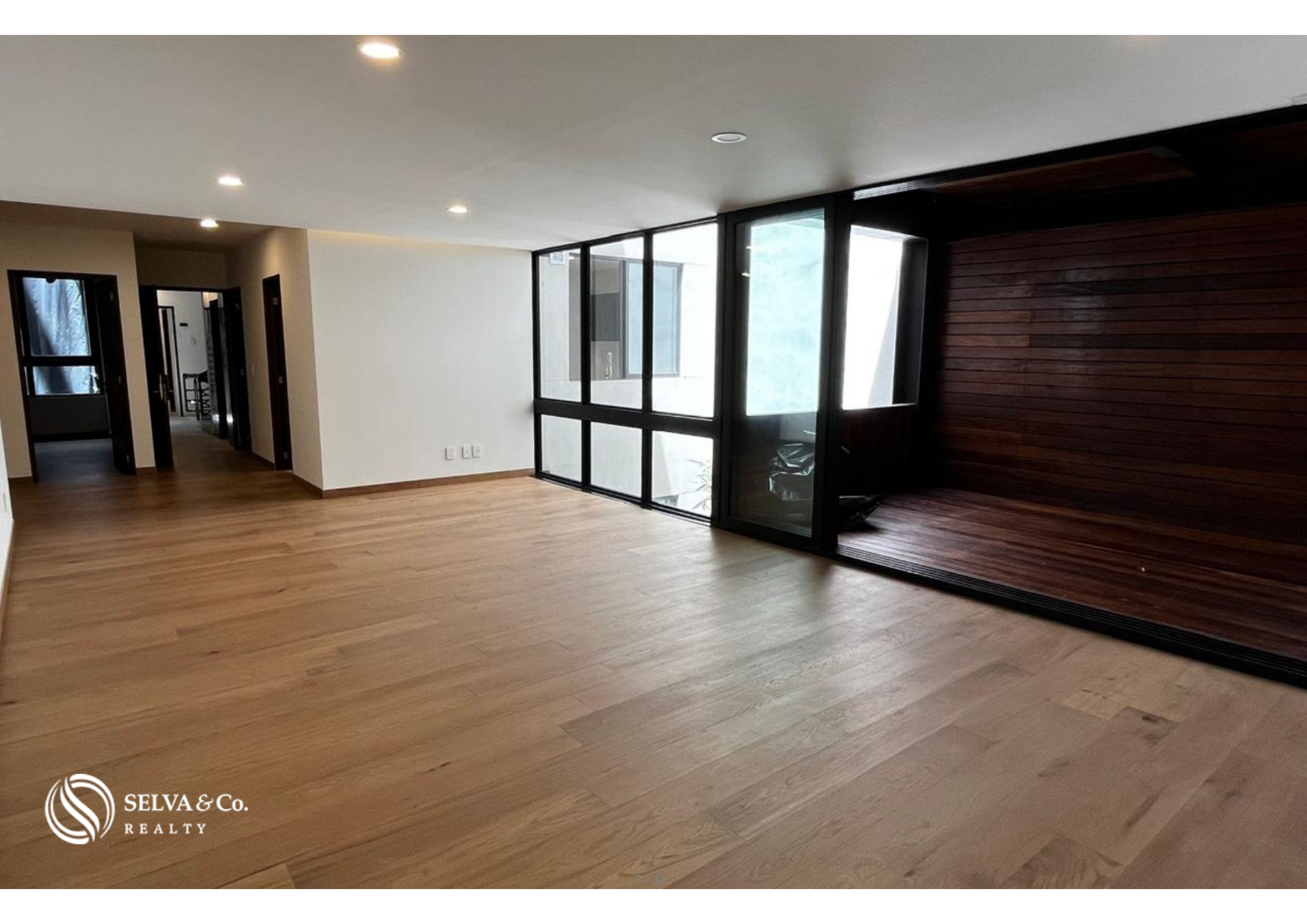
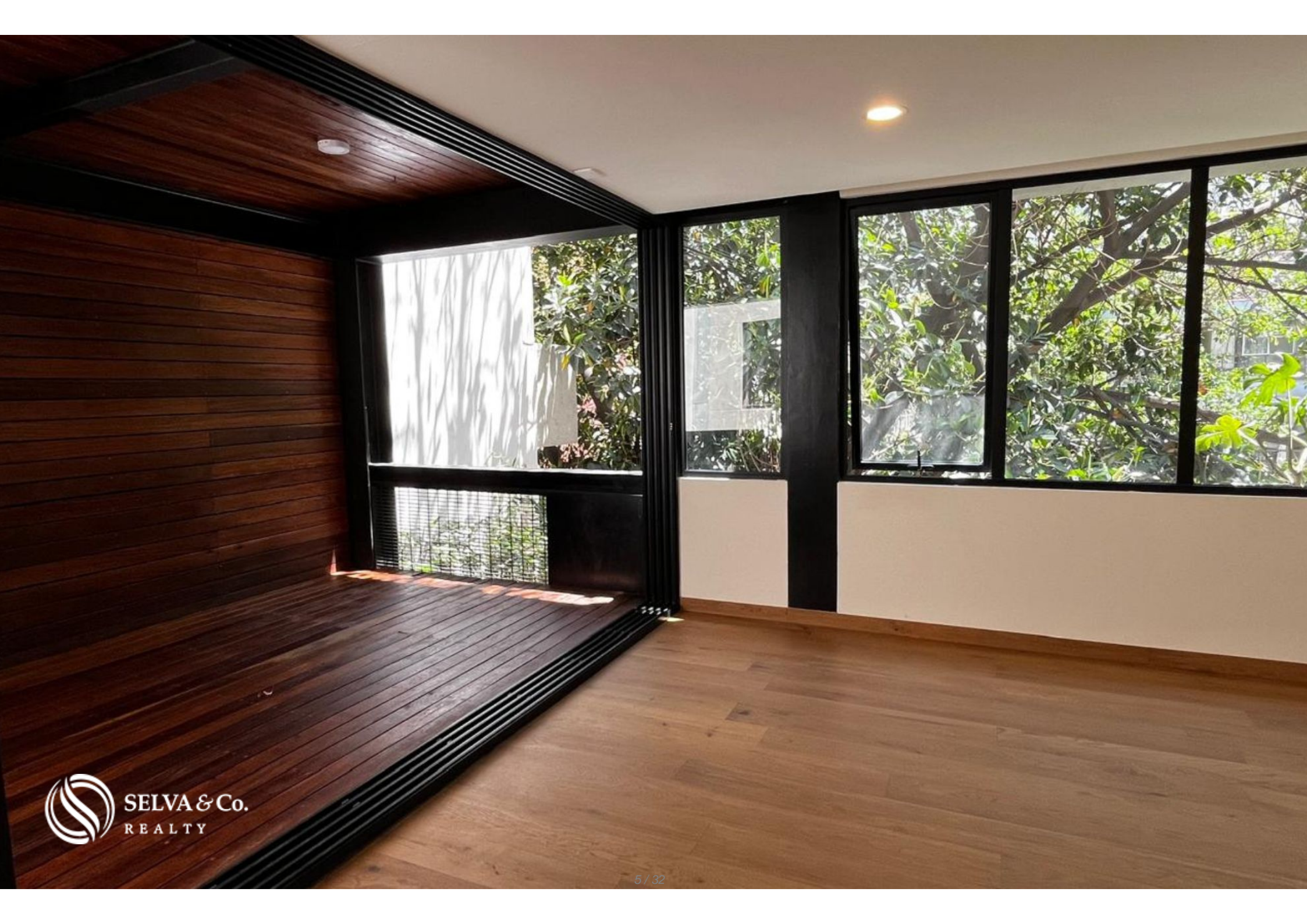


# Spacious two-story condo for sale, Polanco, CDMX

<i>ID: DCM227-1</i>	<i>Location: Mexico City</i>
<i>Zone: Polanco</i>	<i>Type: Condos</i>
<i>Bedrooms: 2</i>	<i>Bathrooms: 2.5</i>
<i>Parking(s): 2</i>	<i>Construction: 186 m2 / 2,002.10 ft</i>















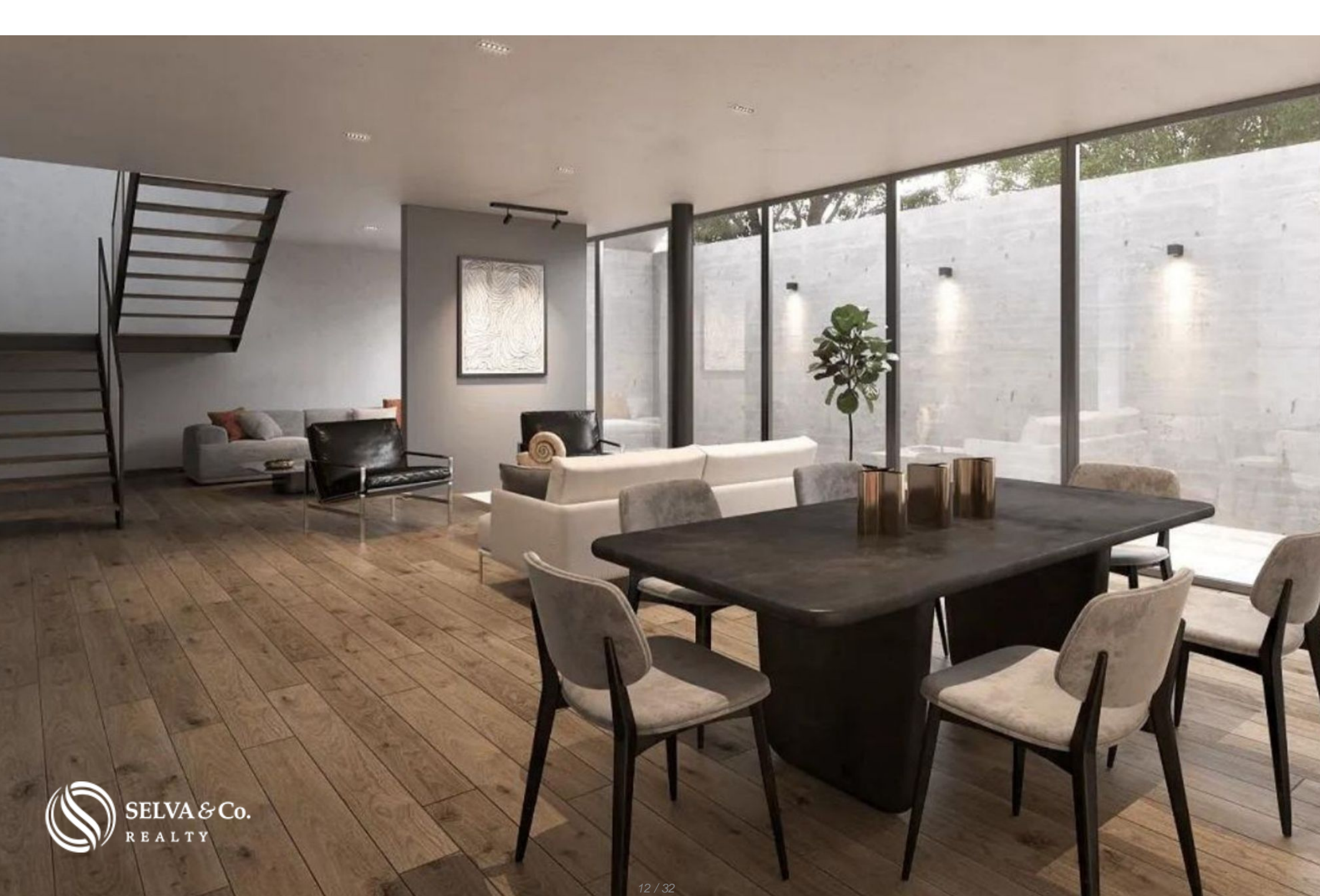


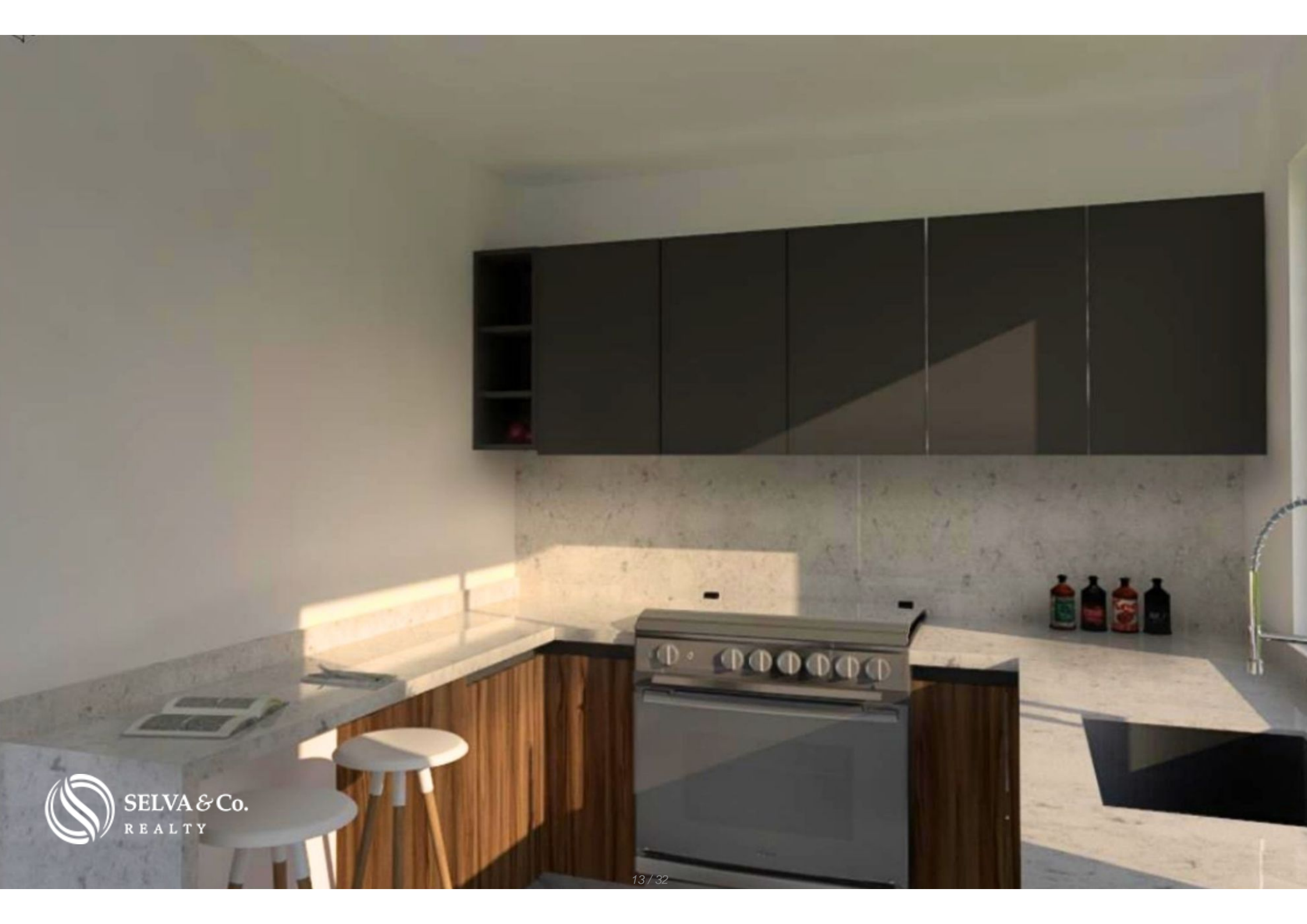


**Condo**

**Museo Nacional de Antropología  
Museum**

**Zoológico de Chapultepec  
Zoo**













SELVA  
REFINANCA

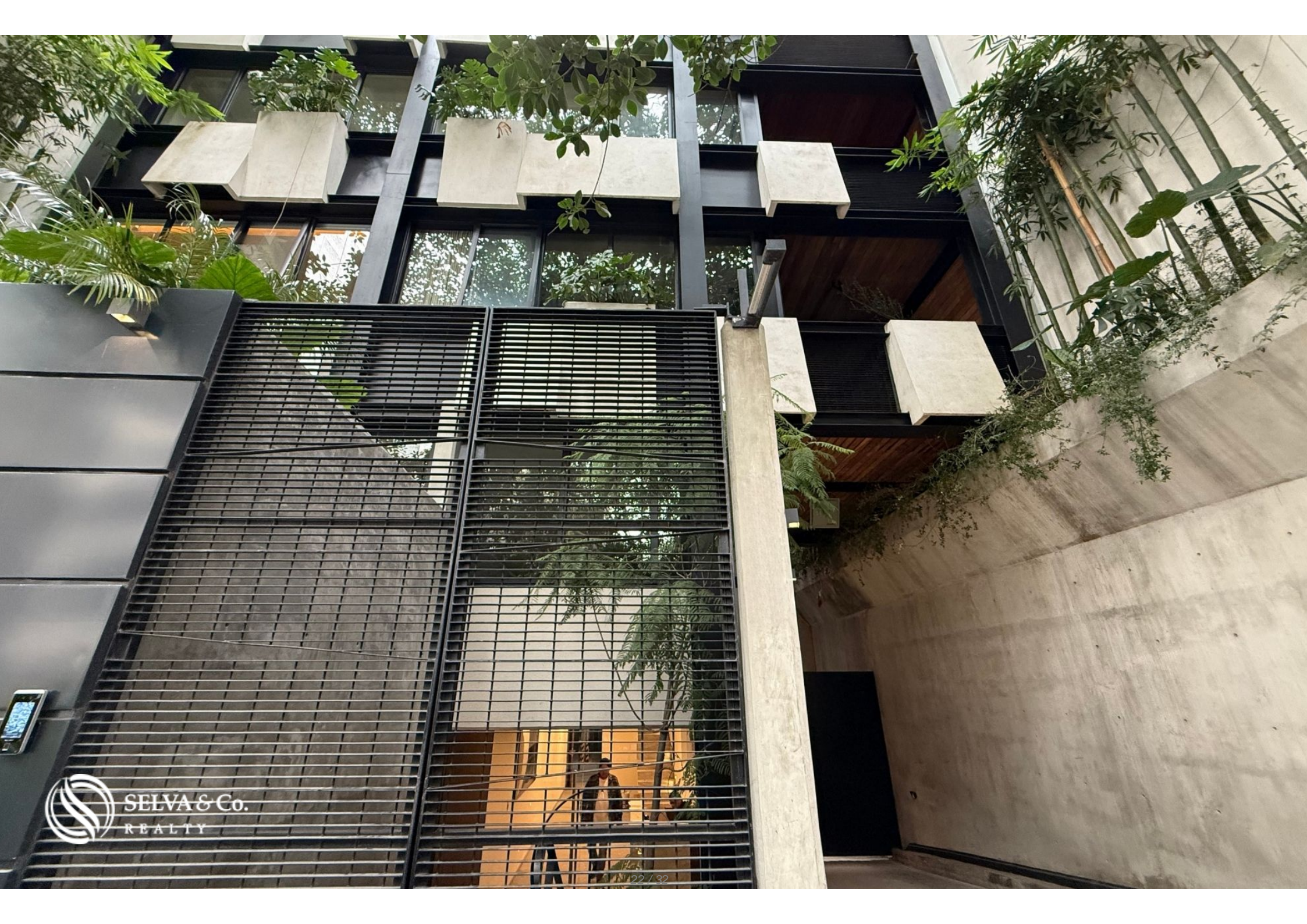


REALESTATE  
L.A. & Co.  
REALTY





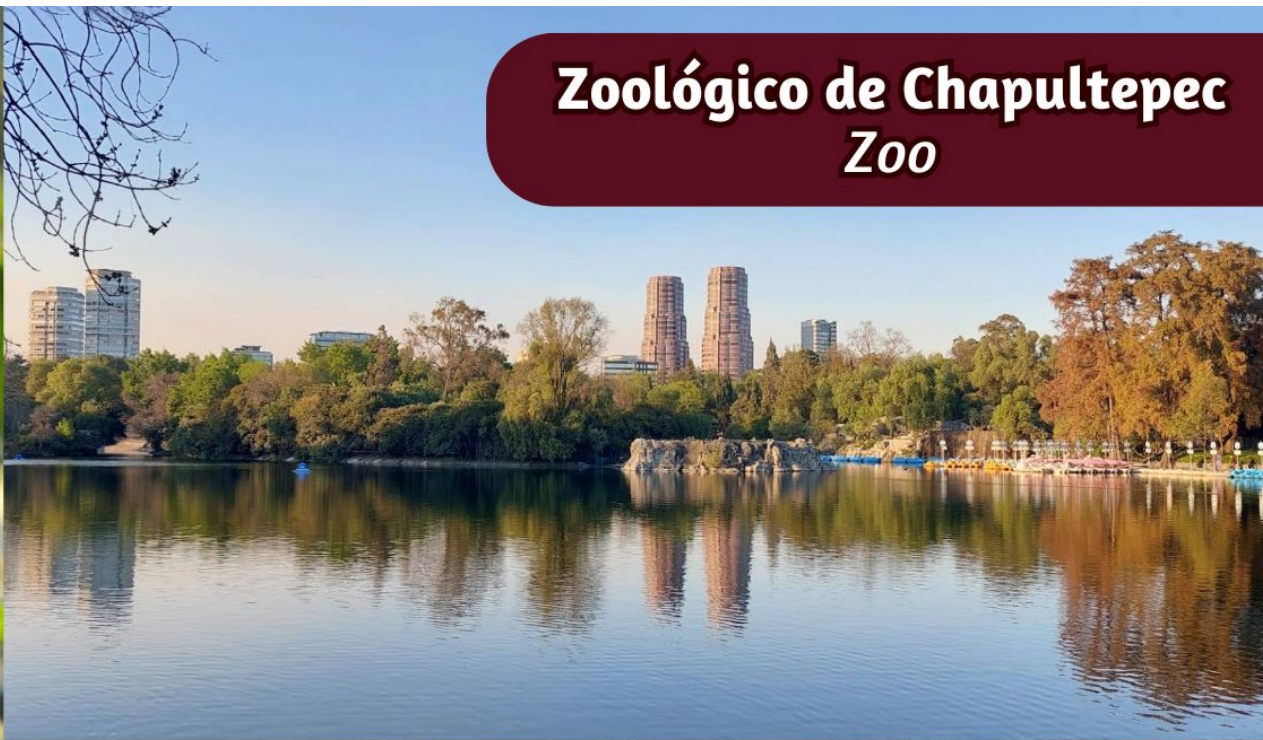




 SELVA & Co.  
REALTY

# Museo Nacional de Antropología Museum





**Zoológico de Chapultepec  
Zoo**





## Description

DCM227-1

Spacious two-story condo for sale, Polanco, CDMX

Boutique building with only 6 units, featuring an excellent location, underground parking, and a modern, eco-friendly design.

### FEATURES OF THE CONDO

Bright condo designed to maximize natural light, with floor-to-ceiling windows.

Master bedroom with en-suite bathroom, walk-in closet, and ample space.

Private parking for 2 cars

Living-dining room

Kitchen

Laundry area

Storage room

TV room (Ask for availability)

Service room with full bathroom (Ask for availability)

## AMENITIES AND SERVICES

Underground parking

Common bicycle parking

Elevator

24/7 security

Controlled access

CCTV system

Environmentally friendly building

Planters in common areas

Electric car charging station preparation

Water reuse system for irrigation in common areas

LED lighting throughout the building for low energy consumption

Motion sensors for lighting in common areas

Low water consumption bathroom fixtures

Eco-friendly elevator with low energy use

## LOCATION

Condo for sale in Polanco, México City, México

10 minutes to Chapultepec Zoo

10 minutes to the National Museum of Anthropology

40 minutes to Mexico City International Airport

## READY FOR IMMEDIATE DELIVERY

Departamento for sale.

## OFFICIAL PRICE

The official price of this property is 17,800,000 Pesos, prices in US dollars are provided as a reference. For purchase, the exchange rate of the day will be applied.

The images used for this advertisement are from the general project and do not correspond to any particular residence.

Some items and finishes may or may not be included depending on your final agreement with the seller.

Prices are subject to change without notice. Contact us to send you the price list and updated information.

Schedule your appointment to visit the area or call us to answer your questions.

## Property details

- Covered parking
- Laundry room
- Walking closet
- Exclusive Parking
- Storage

## Amenities

- Controlled access
- Elevator
- Eco friendly
- Security 24/7

## Location





**SELVA & Co.**  
REALTY

MX 984 803 2058 / US 805 308 2900

[www.selvacorealty.com](http://www.selvacorealty.com)