



# Condo with private terrace and storage room, for sale, Polanco, Mexico City

<i>ID: DCM279-3</i>	<i>Location: Mexico City</i>
<i>Zone: Polanco</i>	<i>Type: Condos</i>
<i>Bedrooms: 1</i>	<i>Bathrooms: 1</i>
<i>Parking(s): 1</i>	<i>Construction: 90 m2 / 968.76 ft</i>



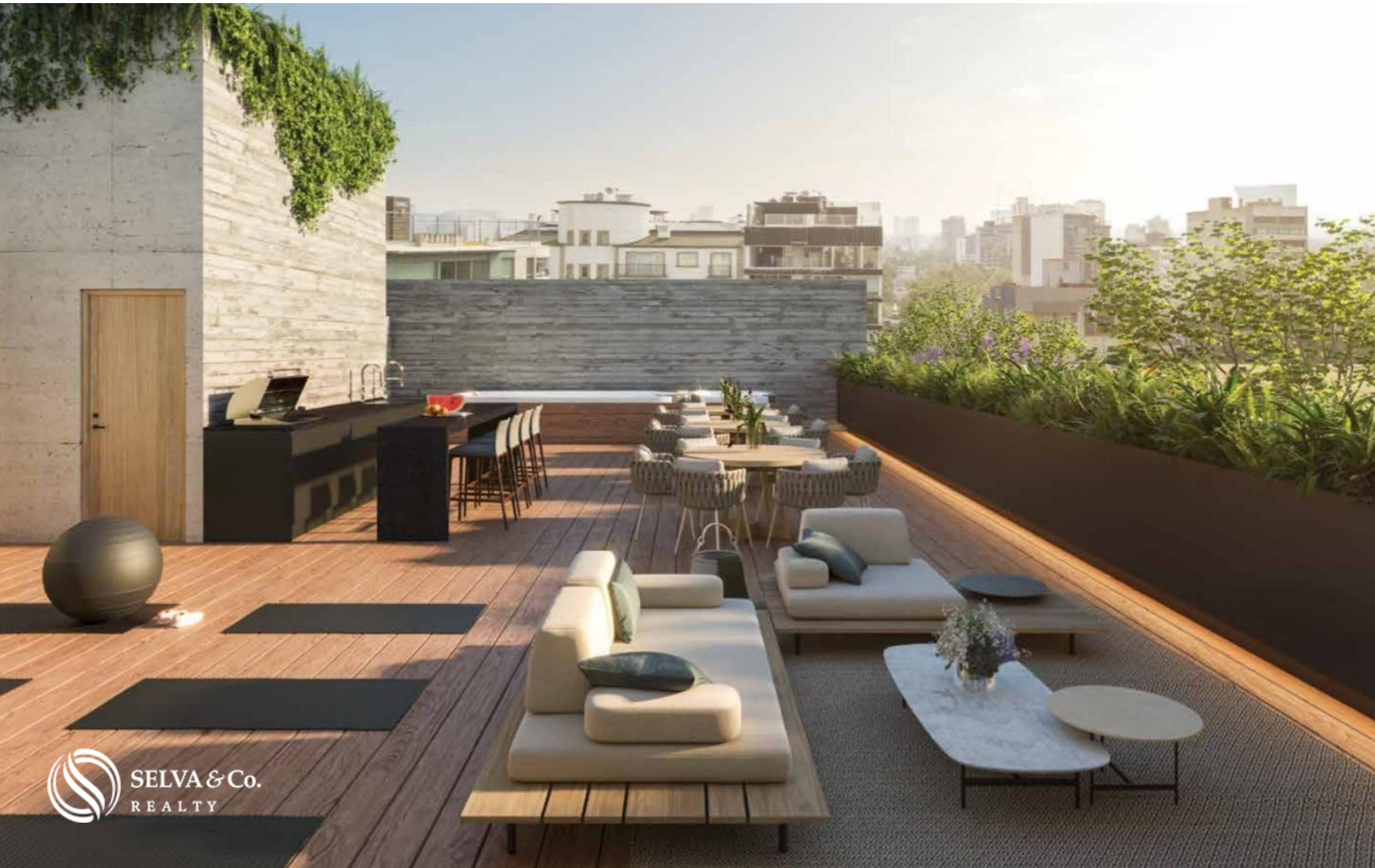








 SELVA & Co  
REALTY



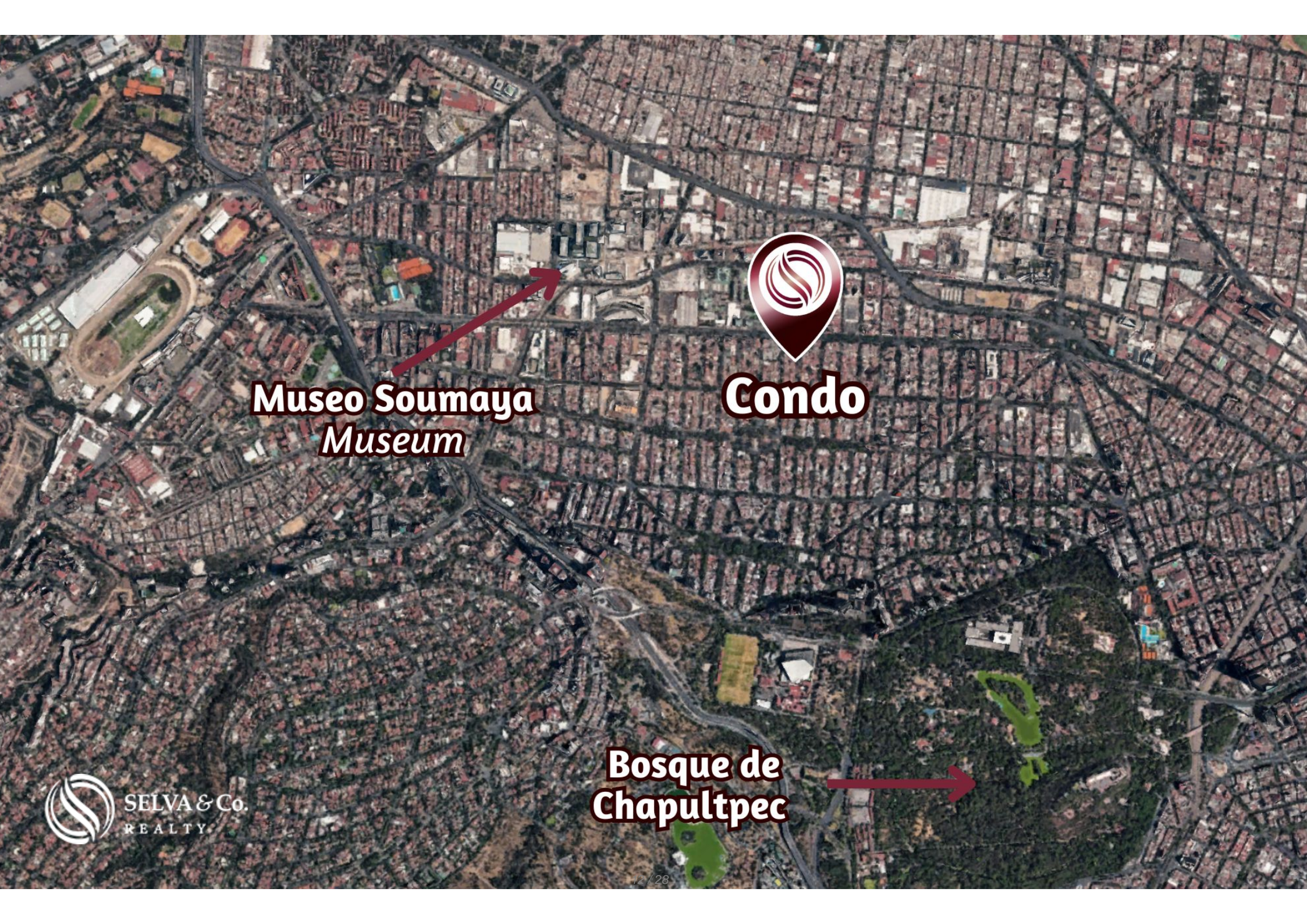


 SELVA & Co.  
REALTY





 SELVA & Co.  
REALTY



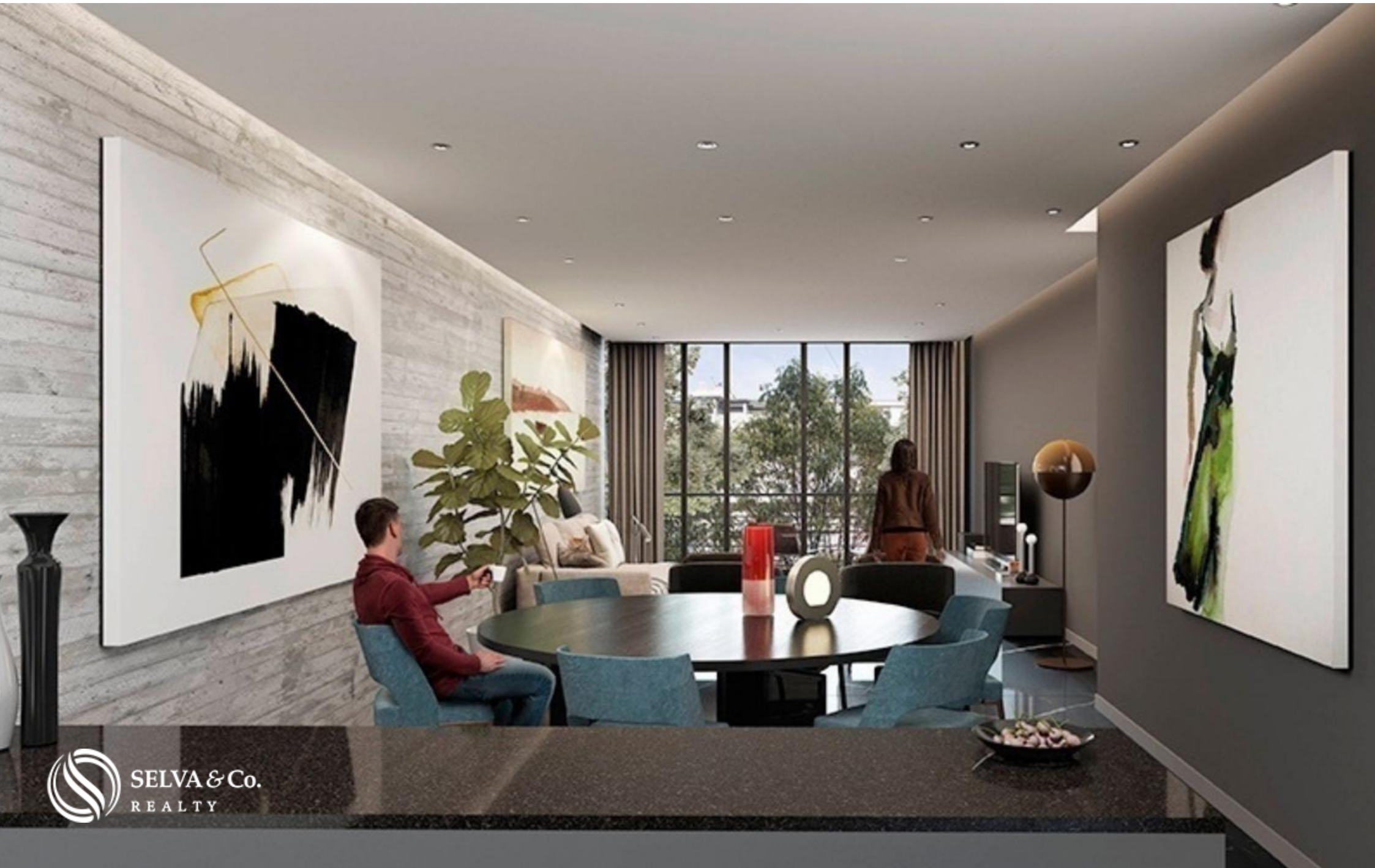
**Condo**

**Museo Soumaya  
Museum**

**Bosque de  
Chapultpec**









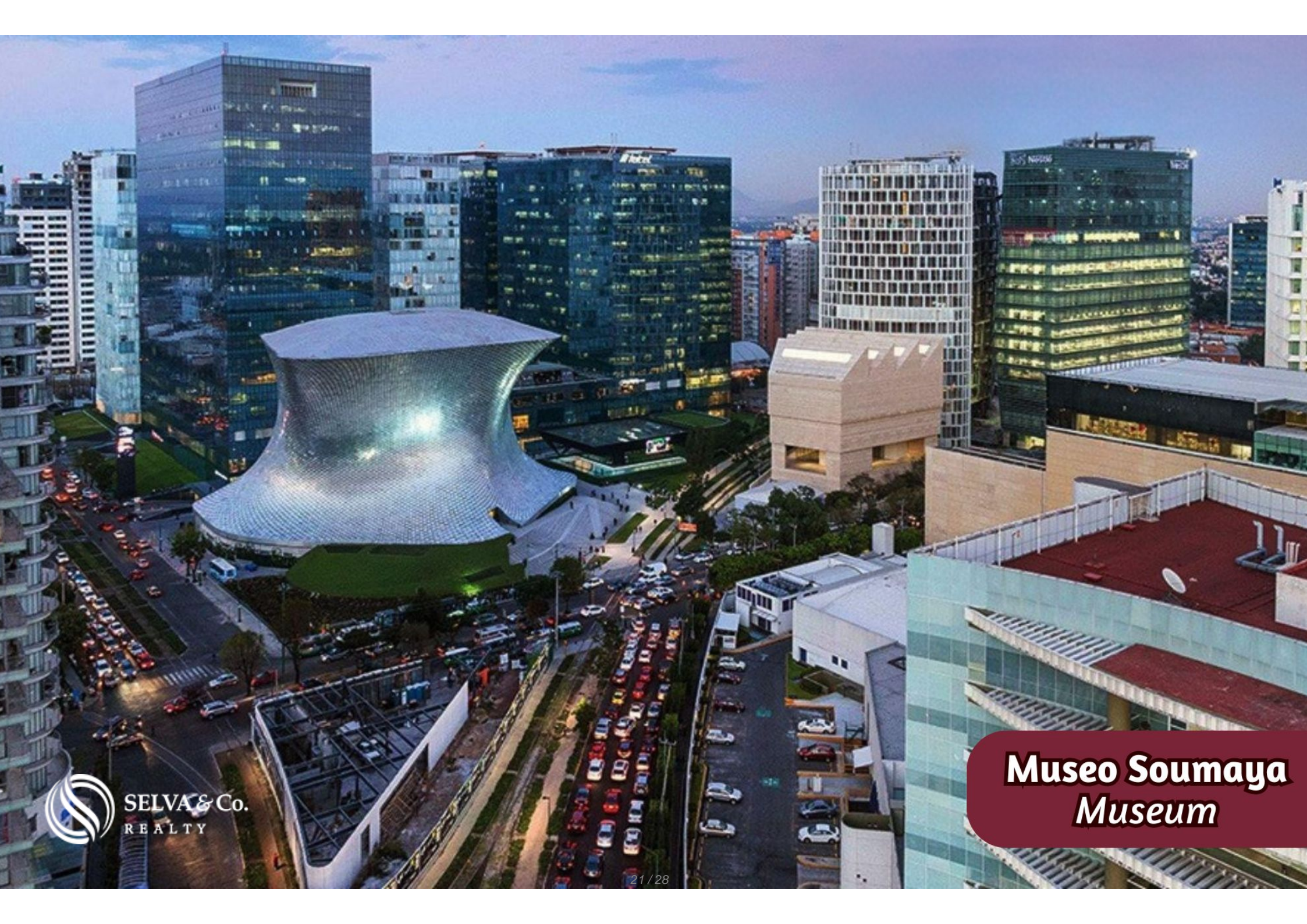




 SELVA & Co.  
REALTY









## Description

DCM279-3

Condo with private terrace and storage room, for sale, Polanco, Mexico City

Condo for sale in one of the most sought-after areas of the city. This development features private terraces and modern elevators. Ideal for living or investment, with close access to shops, restaurants, art, and entertainment.

### FEATURES OF THE CONDO

Panoramic city views

Bright unit with large windows that allow natural light

Living room (can be converted into a second bedroom)

Private terrace

Covered private parking

Jacuzzi (ask for availability)

Fire pit (ask for availability)

Grill area (ask for availability)

## AMENITIES AND SERVICES

Lobby

Rooftop garden

Automated parking system

Storage units

## LOCATION

Condo for sale in Polanco, Mexico City, Mexico.

15 minutes to Bosque de Chapultepec

15 minutes to Soumaya Museum

50 minutes to Benito Juárez International Airport

## INVESTMENT

Condo available for pre-sale

## OFFICIAL PRICE

The official price of this property is 608,850 US dollars, prices in Pesos are provided as a reference. For purchase, the exchange rate of the day will be applied.

The images used for this advertisement are from the general project and do not correspond to any particular residence.

Prices may vary according to the progress of construction. Prices are subject to change without notice. Contact us to send you the price list and updated information.

Schedule your appointment to visit the area or call us to answer your questions.

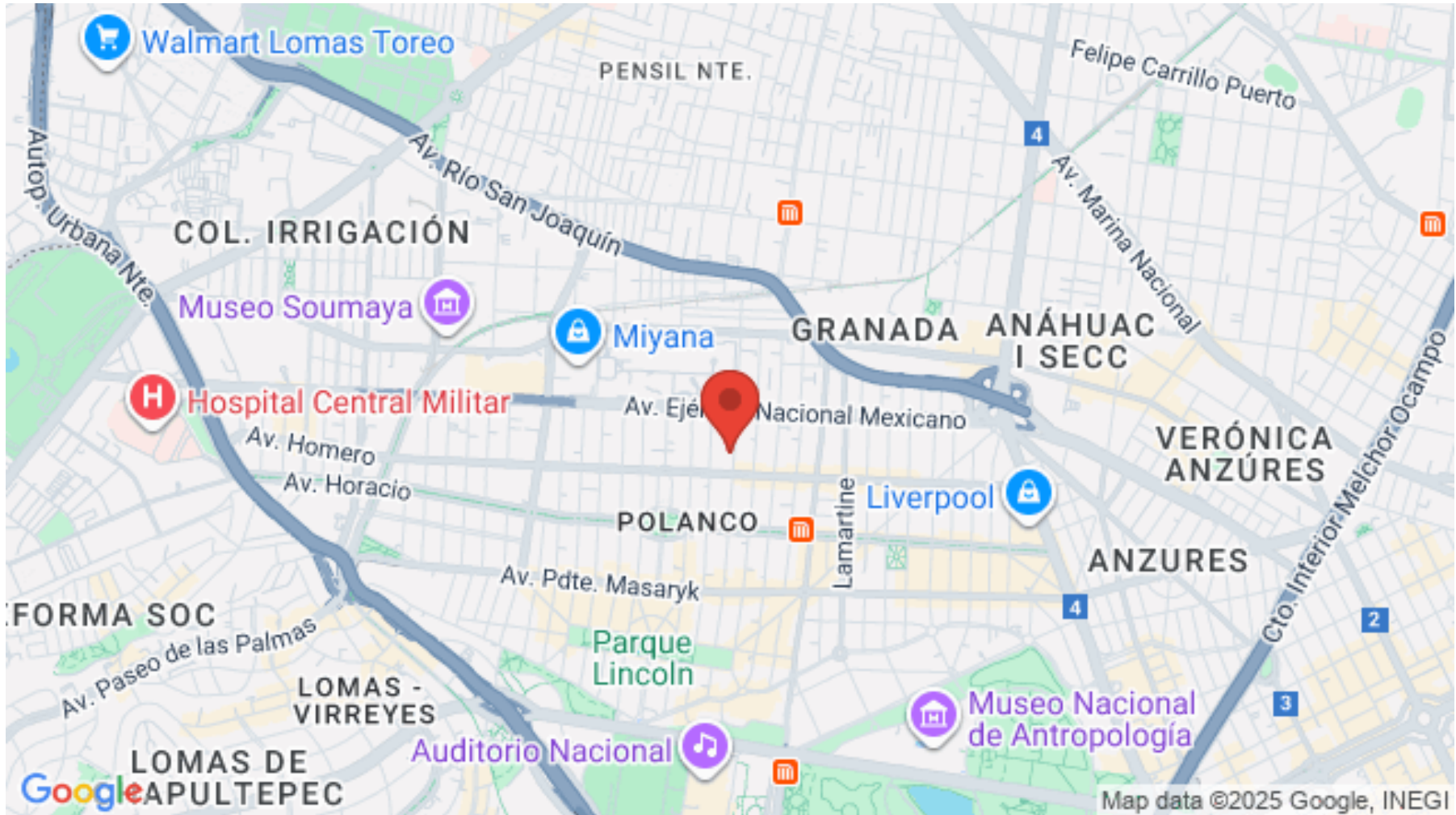
## Property details

- Covered parking
- Panoramic View
- Terrace
- Exclusive Parking
- Storage

## Amenities

- Elevator
- Lobby

## Location





**SELVA & Co.**  
R E A L T Y

MX 984 803 2058 / US 805 308 2900

[www.selvacorealty.com](http://www.selvacorealty.com)