



SELVA & Co.
REALTY

www.selvacorealty.com



Land with clubhouse for sale, Carr. Federal Cancún-Tulum, Playa del Carmen

<i>ID: DLPC223-5</i>	<i>Location: Playa del Carmen</i>
<i>Zone: Carretera Federal Cancun Tulum</i>	<i>Type: Lots</i>
<i>Land: 381 m2 / 4,101.08 ft</i>	



















Cenote Yaakun

**Cenote
Chaak Tun**

**Playa Punta
Esmeralda**



**Lote
Residencial**

Parque Xcaret

Punta Venado























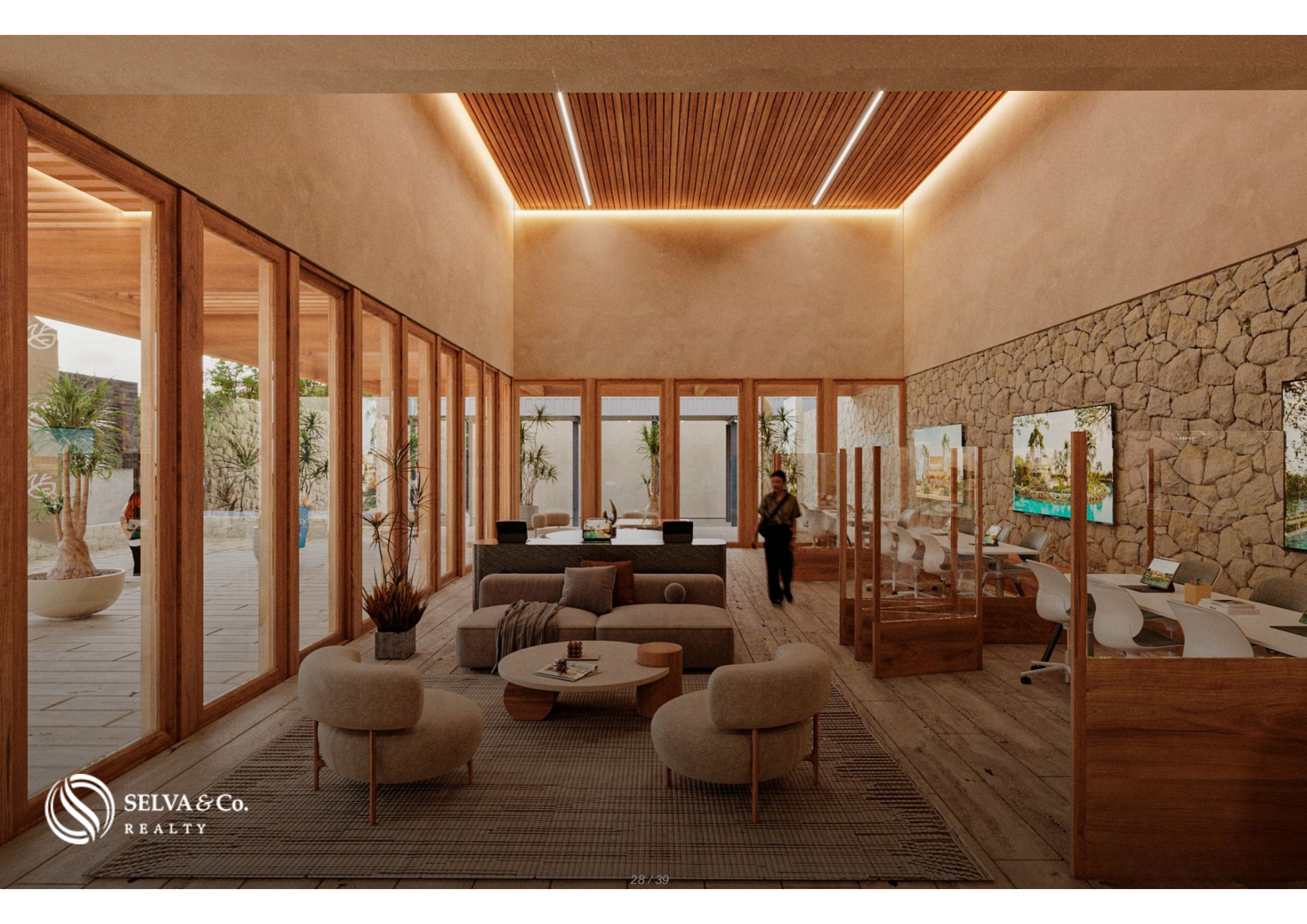


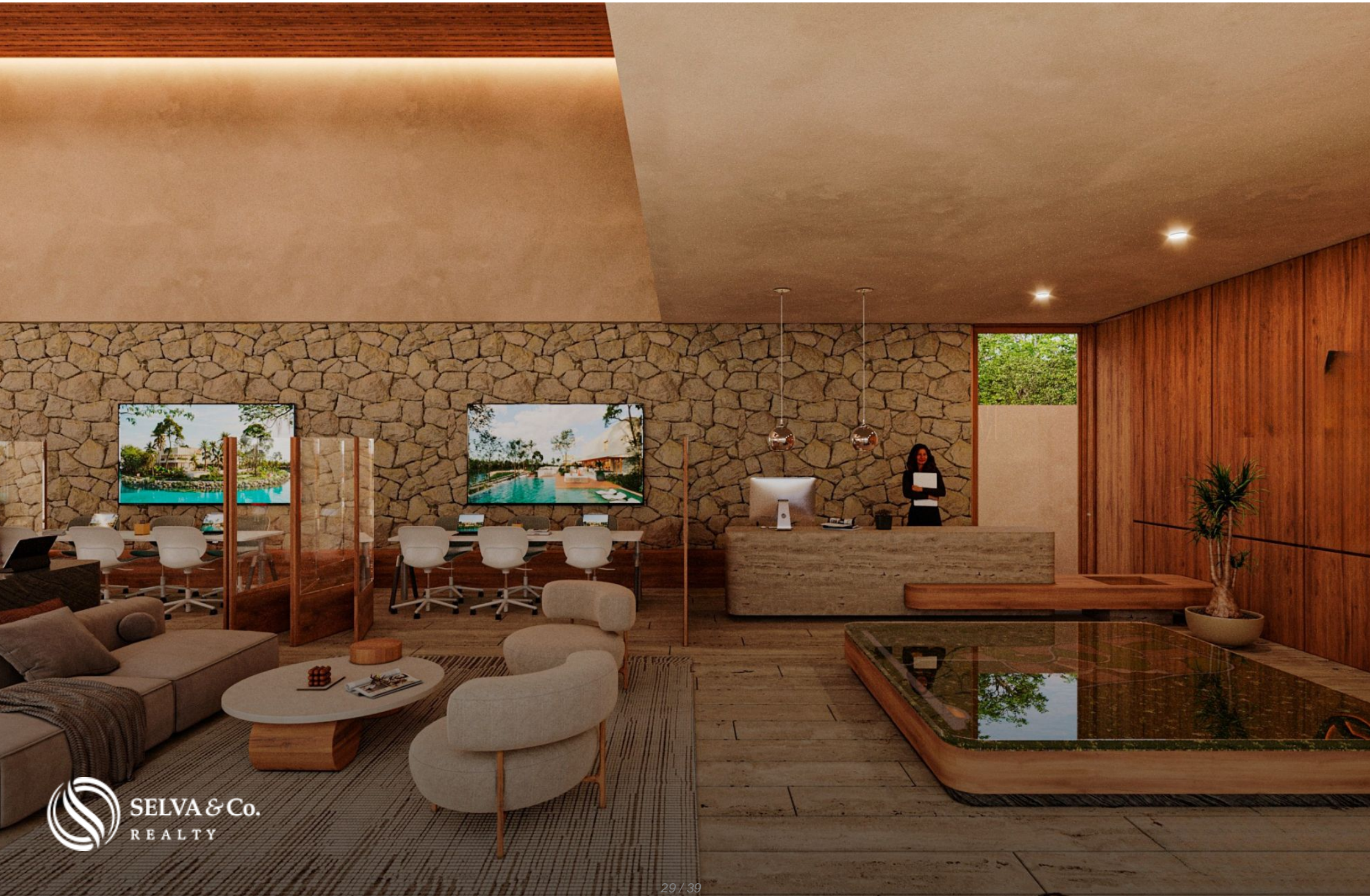




SELVA & Co.
REALTY









Playa Punta Esmeralda



Cenote Yaakun



Description

DLPC223-5

Land with clubhouse for sale, Carr. Federal Cancún-Tulum, Playa del Carmen

90 hectares of protected green areas with cenotes, lagoons, and natural trails. Low-density development: spacious clusters with limited residences, offering peace and exclusivity. Adjacent to a nature reserve: no risk of unexpected developments.

LAND FEATURES

Utilities at the property line

Land use: Residential

Villas, condos, and lots designed to suit a variety of lifestyles

RESIDENTIAL AMENITIES

Pet park

Children's park

Wellness park

Controlled access

Exclusive lake club

Parking

Lobby / Service area

Lakeside restaurant and bar

Pool area

Social club

Event garden

Wellness center

Racket sports zone

Dock

Kids club

SERVICES

Paved roads

Water service

Electricity

Sewer system

LOCATION

Land for sale on Carr. Federal Cancún-Tulum, Playa del Carmen, Quintana Roo, México.

7 minutes from Xcaret Park

11 minutes from Yaakun Cenote

18 minutes from Punta Esmeralda Beach

58 minutes from Cancun International Airport

PROPERTY STATUS

Title deed, legal certainty

OFFICIAL PRICE

The official price of this property is 5,040,000 Pesos, prices in US dollars, are provided as a reference. For purchase, the exchange rate of the day will be applied.

The images used for this advertisement are from the general project and do not correspond to any particular plot of land.

The images presented are for illustrative purposes and may differ from the final product in features and location.

Schedule your appointment to visit the area or call us to answer your questions.

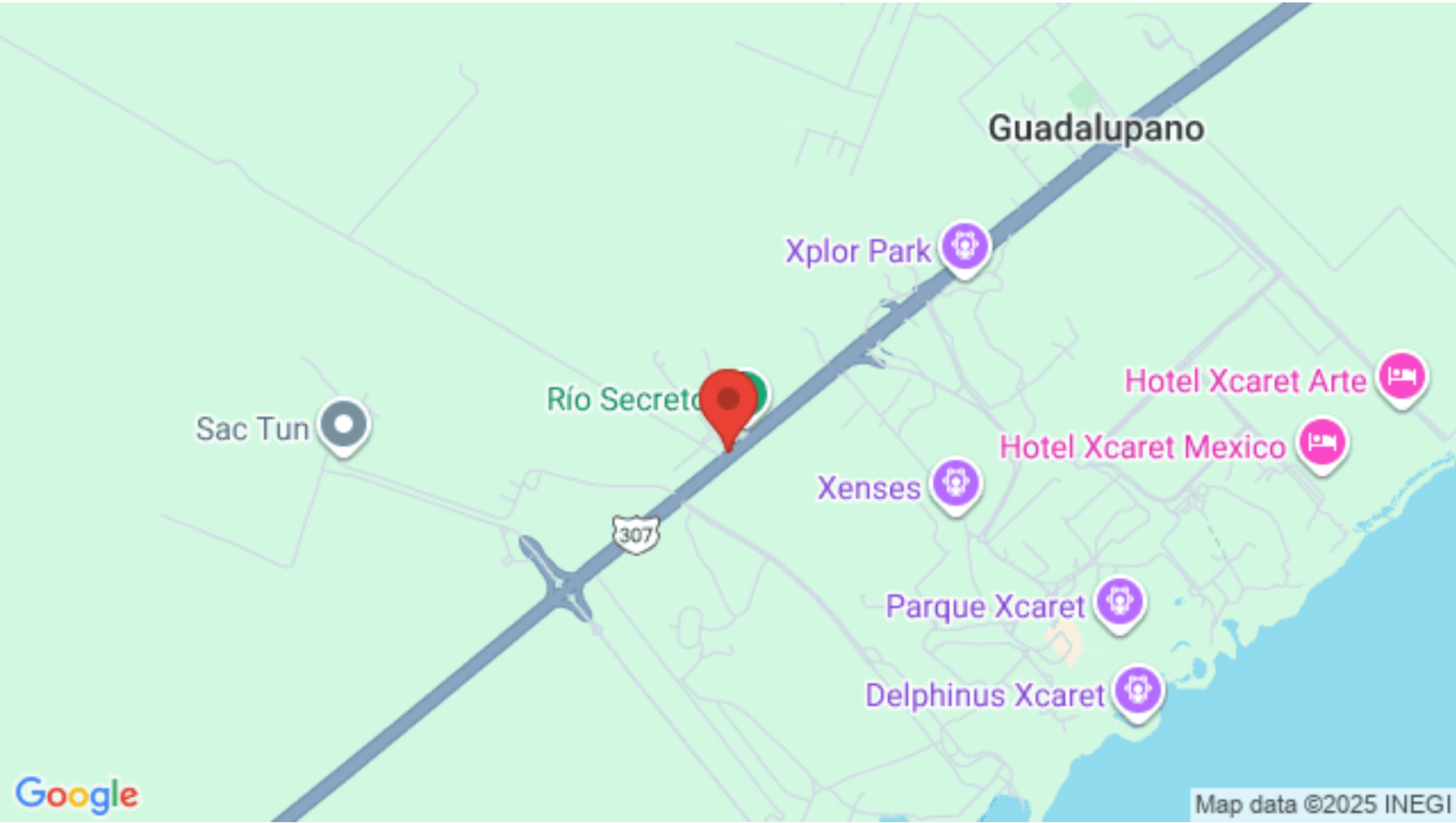
Property details

- Exclusive Parking
- Garden

Amenities

- Bar
- Controlled access
- Kids Club
- Lobby
- Playground for children
- Swimming Pool
- Cenote
- Dock
- Lake
- Pet friendly
- Restaurant
- Wellness Center

Location





SELVA & Co.
R E A L T Y

MX 984 803 2058 / US 805 308 2900

www.selvacorealty.com