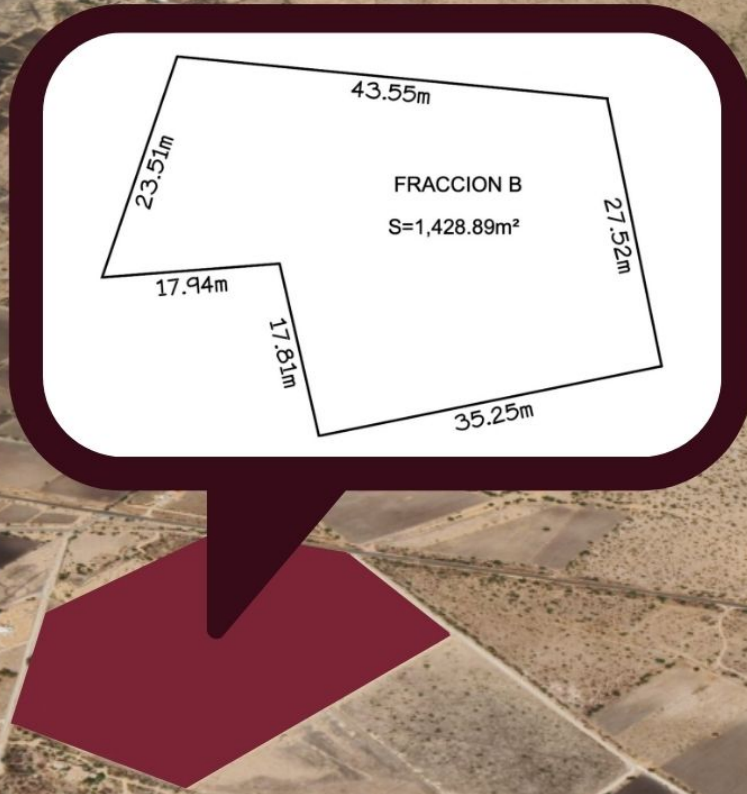


Picachos

**Biznaga
del Jaral**

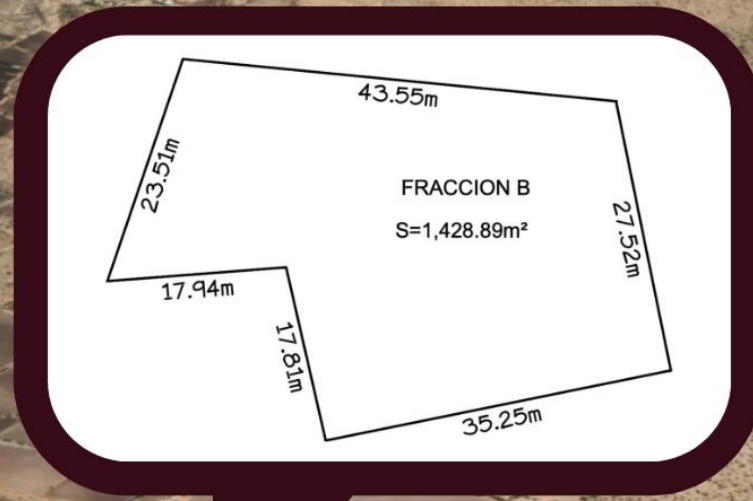


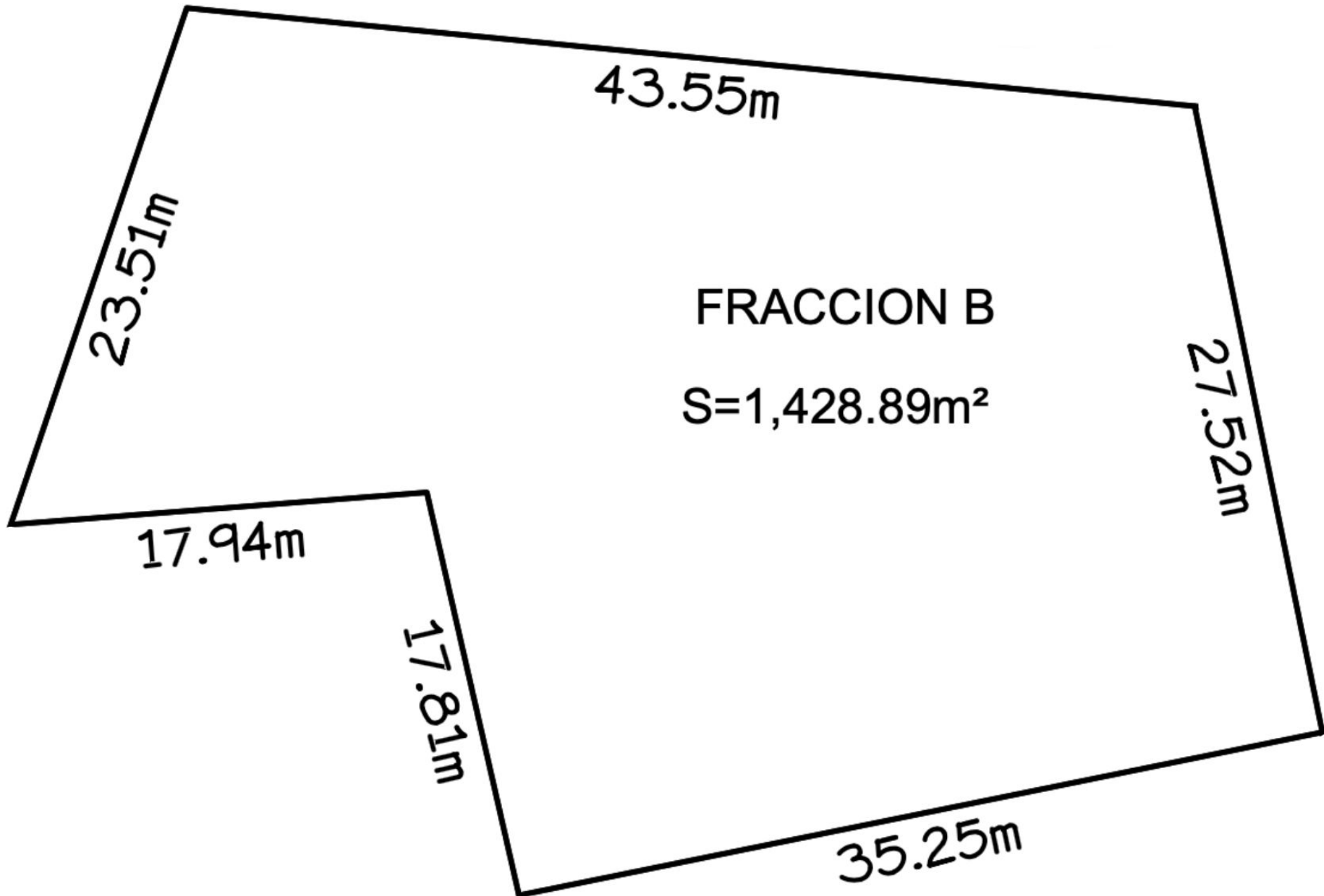
1,428 m² lot, gated community with amenities for sale San Miguel de Allende

<i>ID: DLASM207-7</i>	<i>Location: San Miguel de Allende</i>
<i>Zone: Carretera Jalpa</i>	<i>Type: Lots</i>
<i>Land: 1,428 m² / 15,370.99 ft</i>	

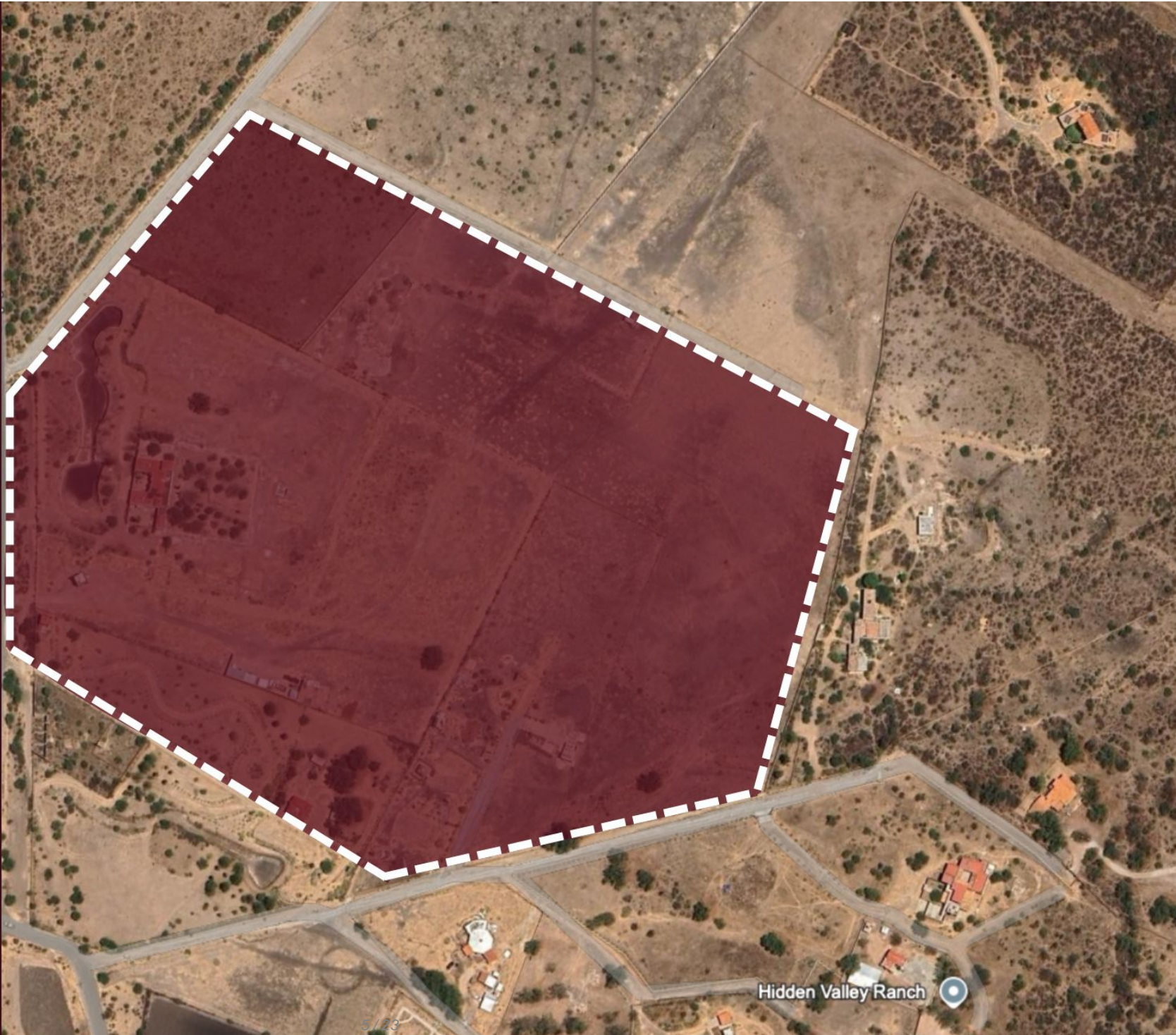
Picachos


**Biznaga
del Jaral**





Carretera Jalpa



Hidden Valley Ranch 













San Miguel de Allende

Picachos



**Biznaga
del Jaral**





etal







Description

DLSM207-7

1,428 m² lot, gated community with amenities for sale San Miguel de Allende

Land for sale in Residential Xúchiles a new peaceful development with only 11 properties, located along the Jalpa Highway, next to the town of Biznaga de Jaral in San Miguel de Allende.

AMENITIES

Tennis court

Padel court

Clubhouse

Kids playground

SERVICES

All utilities available

Septic tank and biodigester system for each lot

Private well water supply

100,000-liter cistern reserve for the community

Closed-circuit security system

Perimeter fencing with electrified mesh

Controlled access gate with 24-hour security

Underground installations

COMMUNITY FEATURES

An exclusive new development of 11 properties, designed with urbanization inspired by the historic streets of San Miguel de Allende. It will feature underground utilities, controlled access, full perimeter fencing with electrified mesh, and a closed-circuit security system.

LOCATION

Lot for sale in Residencial Xúchiles, located along the Jalpa Highway, next to the town of Biznaga de Jaral, San Miguel de Allende, Guanajuato, Mexico.

9 minutes from downtown San Miguel de Allende

11 minutes from Jalpa, Guanajuato

PROPERTY STATUS

Titled land with legal certainty.

OFFICIAL PRICE

The official price of this property is 7,144,450 Pesos, prices in US dollars are provided as a reference. For purchase, the exchange rate of the day will be applied.

The images used for this advertisement are from the general project and do not

correspond to any particular plot of land.

The images presented of the lot are for illustrative purposes and may differ from the final product in features and location.

Prices are subject to change without notice. Contact us to send you the price list and updated information.

Schedule your appointment to visit the area or call us to answer your questions.

Amenities

- Clubhouse
- Paddle tennis
- Security 24/7
- Controlled access
- Playground for children
- Tennis court

Location





SELVA & Co.
REALTY

MX 984 803 2058 / US 805 308 2900

www.selvacorealty.com