



**SELVA & Co.**  
REALTY

[www.selvacorealty.com](http://www.selvacorealty.com)



# Luxury Estate for Sale in Residencial Xúchiles, San Miguel de Allende

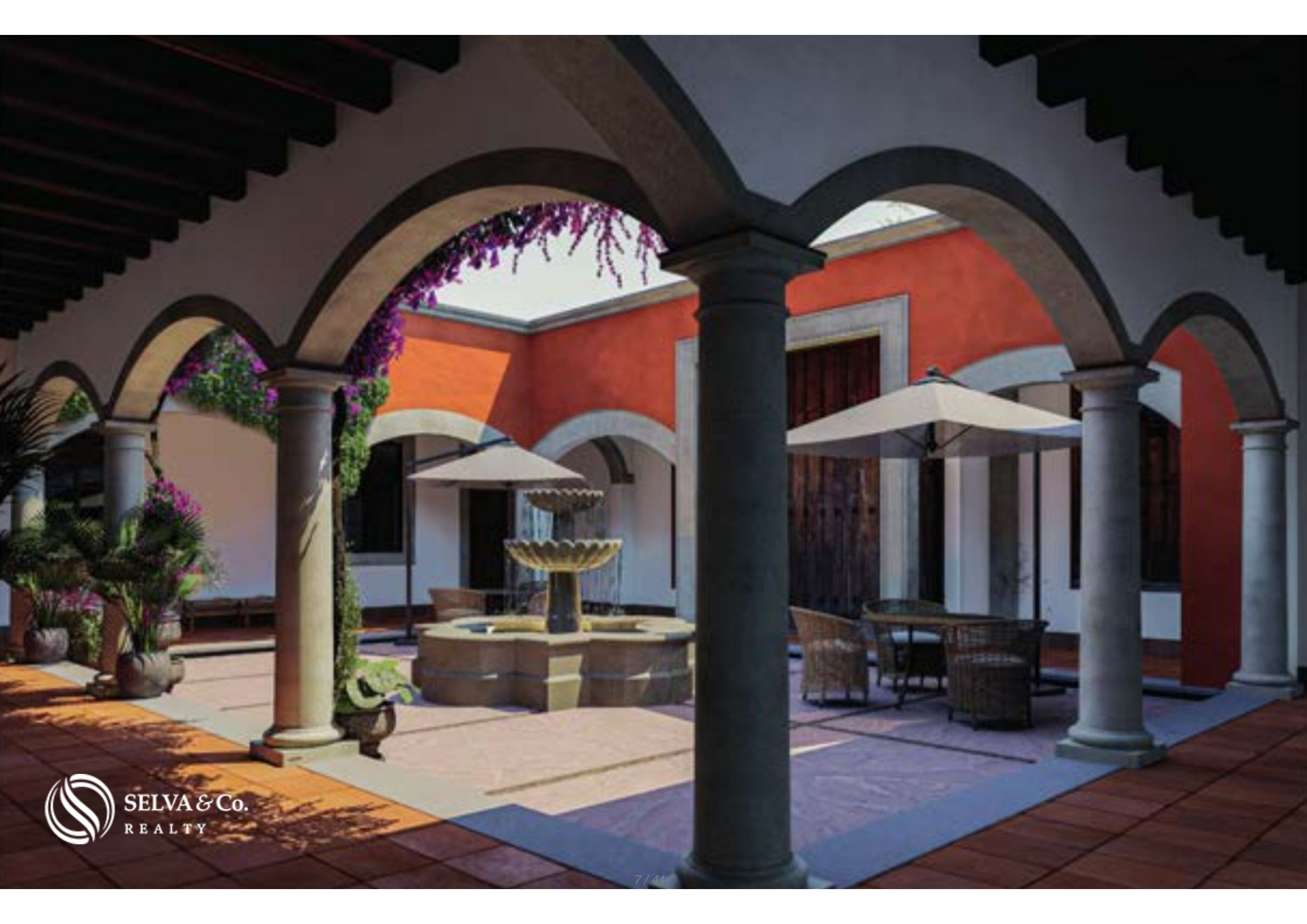
<i>ID: BRSM202</i>	<i>Location: San Miguel de Allende</i>
<i>Zone: San Miguel</i>	<i>Type: Houses</i>
<i>Bedrooms: 4</i>	<i>Bathrooms: 7.3</i>
<i>Levels: 1</i>	<i>Parking(s): 2</i>
<i>Construction: 938 m2 / 10,096.63 ft</i>	<i>Land: 1,935 m2 / 20,828.34 ft</i>







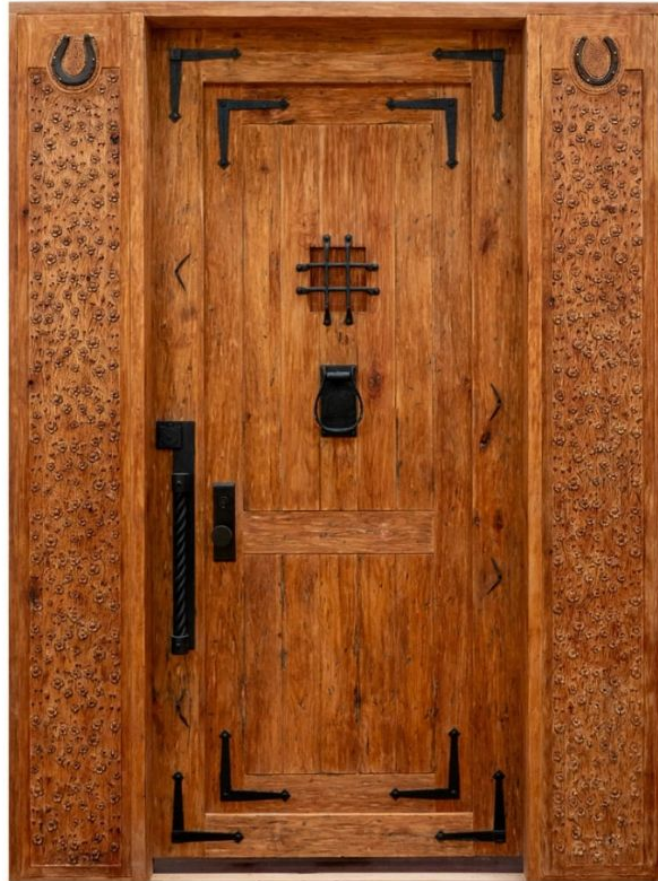












**Picachos**



**Biznaga  
del Jaral**



**CASA  
HOUSE**





































SELVA & Co.  
REALTY





 SELVA & Co.  
REALTY



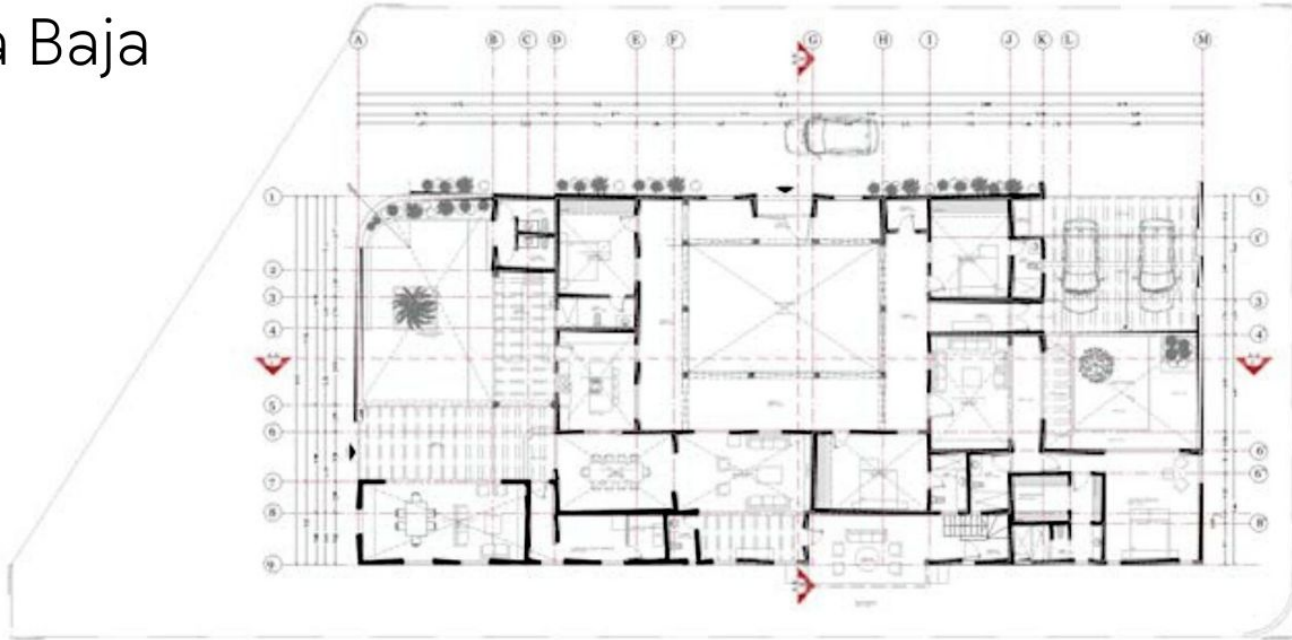
**San Miguel de Allende**

**Picachos**

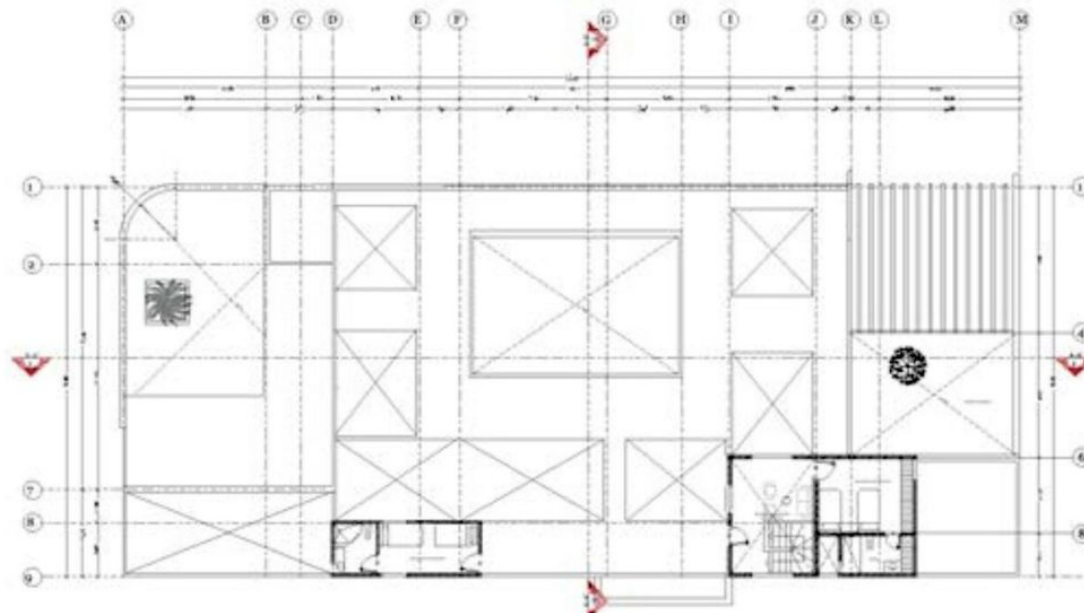


**Biznaga  
del Jaral**

Planta Baja



Planta Alta



## Description

BRSM202 JP

Luxury Estate for Sale in Residencial Xúchiles, San Miguel de Allende

This luxury home is inspired by the rustic-classic haciendas of San Miguel de Allende. It features three patios surrounded by lush vegetation, creating a warm and inviting atmosphere. Its gardens reflect Mexico's flora, folklore, and serenity, making it a unique space full of character.

Additionally, the house boasts a unique design with custom mahogany wood doors and windows crafted by architect and designer Hylda Rodríguez.

### FEATURED HOME DETAILS

4 bedrooms with en-suite bathrooms, including a master suite with a walk-in

closet

1 full bathroom next to the TV room

3 half bathrooms

Covered garage for two cars.

Space for 15 vehicles, including a private access road within the property perimeter.

TV room

Main living room with a fireplace

Fully equipped kitchen

Dining room

Laundry room

2 service quarters with en-suite bathrooms

Welcoming central patio with a fountain

Pergola-covered social patio with a barbecue area

Relaxation patio next to the master suite

Ground floor terrace

Rooftop terrace with panoramic views

Wine cellar

Luxury finishes

Designer mahogany wood doors

2 water cisterns with a 30,000-liter capacity, one of which collects rainwater

Beautiful red brick vaulted ceilings

Septic tank and biodigester

## AMENITIES & SERVICES

Tennis court

Padel court

Clubhouse

Kids playground

All utilities available

The best views of the Picachos mountains

## LOCATION

Pre construction home in Residential Xúchiles, located at km 5.5 on the San Miguel de Allende Jalpa highway, Guanajuato, México.

26 minutes from San Miguel de Allende

50 minutes from Querétaro

## COMMUNITY FEATURES

An exclusive new development of 11 properties, designed with urbanization inspired by the historic streets of San Miguel de Allende. It will feature underground utilities, controlled access, full perimeter fencing with electrified mesh, and a closed-circuit security system.

## INVESTMENT

House available for pre-sale

## OFFICIAL PRICE

The official price of this property is \$27,000,000 pesos, prices in US dollars are provided as a reference. For purchase, the exchange rate of the day will be applied.

The images used for this advertisement are from the general project and do not correspond to any particular residence.

Prices may vary according to the progress of construction. Prices are subject to change without notice. Contact us to send you the price list and updated information.

Schedule your appointment to visit the area or call us to answer your questions.

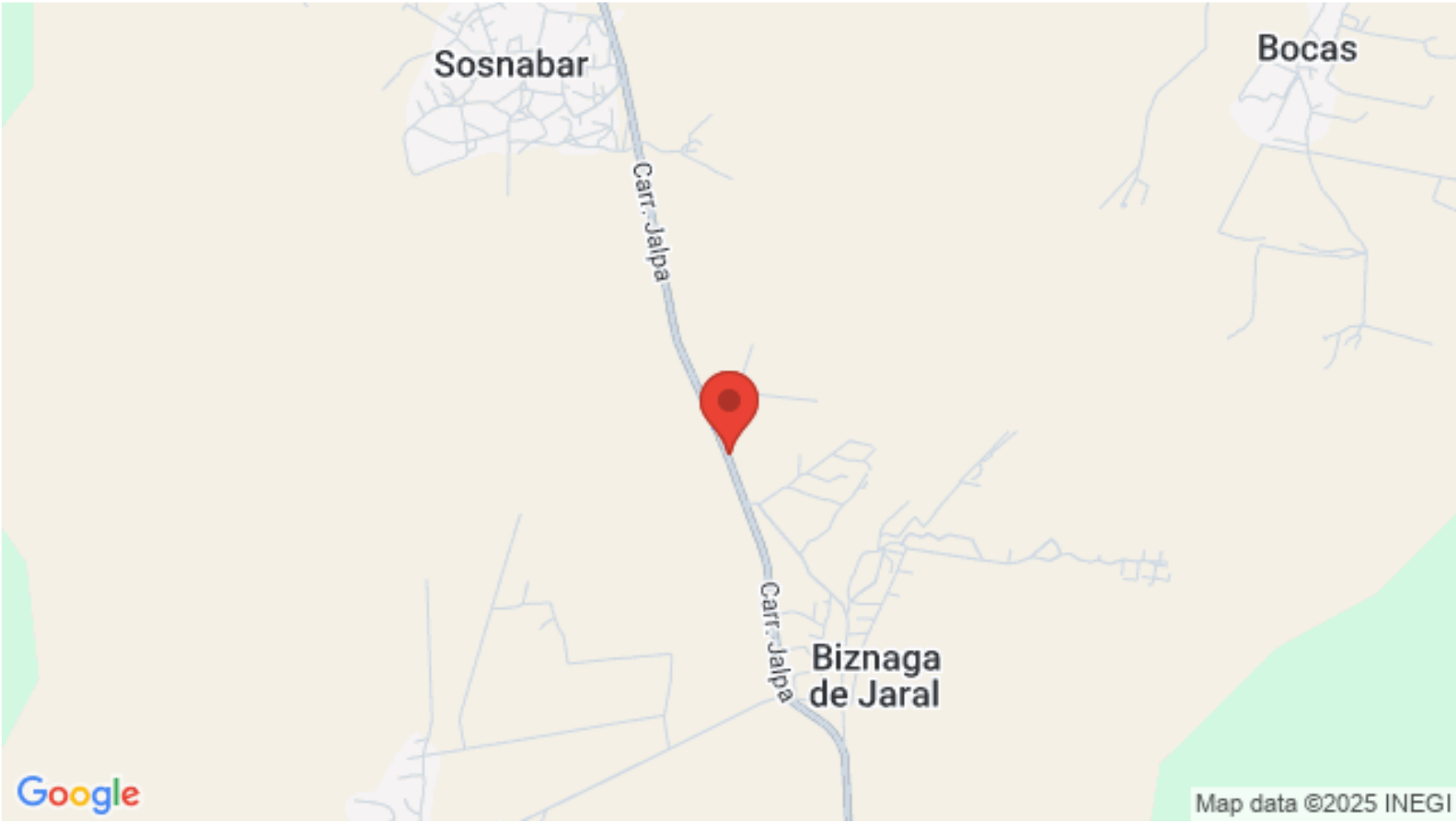
## Property details

- Covered parking
- Garden
- Laundry room
- Patio
- Separate living and dinning room
- Storage
- Tv room
- Walking closet
- Exclusive Parking
- Integral Kitchen
- Luxury finishes
- Roof Top
- Service room
- Terrace
- Unique Aquitectural design

## Amenities

- Clubhouse
- Playground for children
- Security 24/7
- Paddle tennis
- Roof garden
- Tennis court

# Location





**SELVA & Co.**  
REALTY

MX 984 803 2058 / US 805 308 2900

[www.selvacorealty.com](http://www.selvacorealty.com)