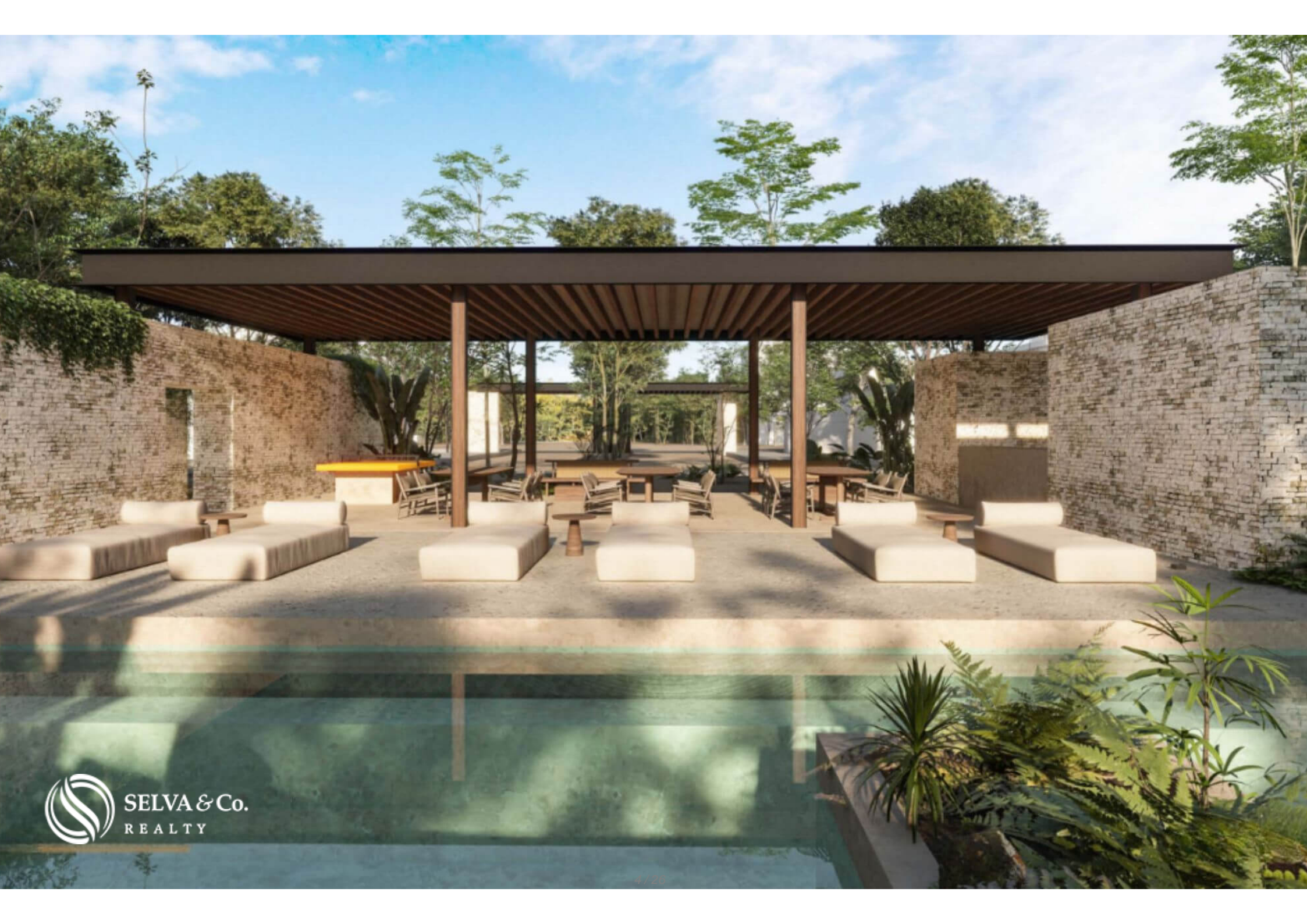


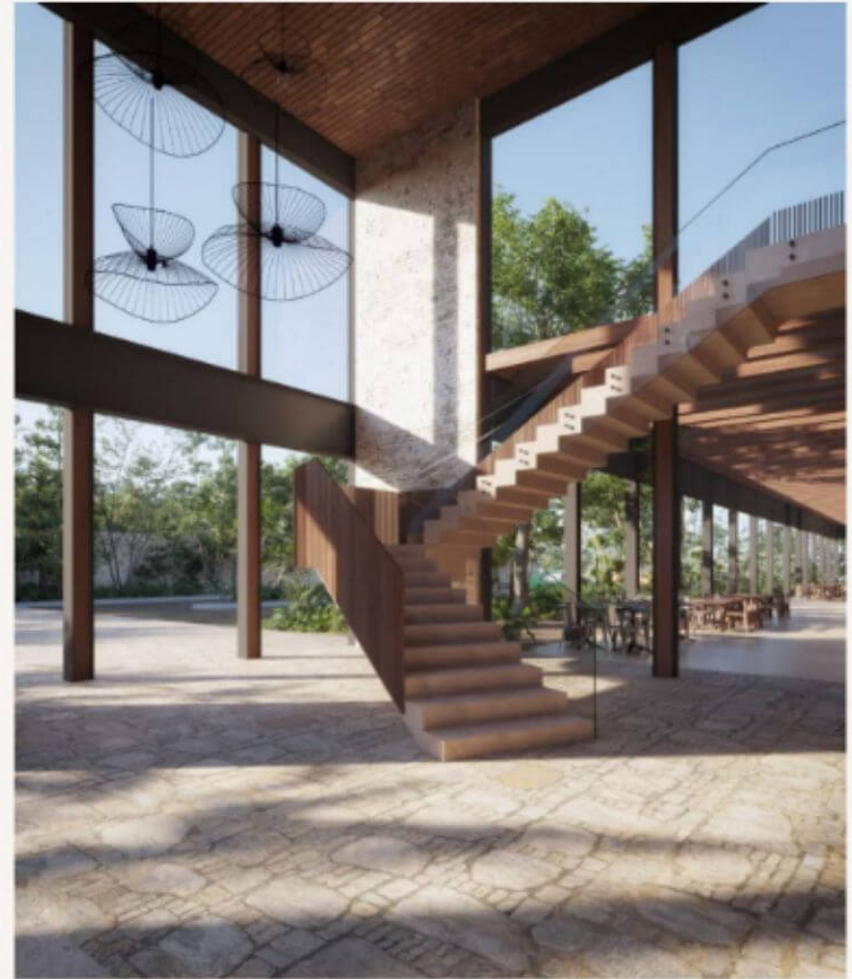
Multifamily land of 2,516 m2 in a luxury residential area for sale, Region 11, Tulum.

<i>ID: DLTU237-8</i>	<i>Location: Tulum</i>
<i>Zone: Region 11</i>	<i>Type: Lots</i>
<i>Land: 2,517 m2 / 27,092.99 ft</i>	





















Playa Paraíso

Playa Santa Fe

Playa las Palmas

Terreno









 SELVA & Co.
REALTY

Playa Paraíso

Playa Santa Fe



Playa las Palmas



Description

DLTU237-8

Multifamily land of 2,516 m² in a luxury residential area for sale, Region 11, Tulum.

This spectacular multifamily land is located within an exclusive residential area in Tulum, one of the most desired and rapidly growing areas in the Riviera Maya. It is perfect for developing a project of apartments or vacation homes, in an environment that combines luxury, nature, and tranquility.

The residential area offers 24/7 security, controlled access, and high-level amenities, such as a swimming pool, clubhouse, green areas, and ecological trails.

AMENITIES

- Clubhouse
- Pool with hammock and sunbed area
- Multipurpose event room
- Mini cinema
- Business center
- Amphitheater
- Bridge
- Pet park
- Gym
- Steam bath
- Sauna
- Hydrotherapy
- Heated pool
- Massage cabin
- Contemplative gardens
- Padel courts

- Pickleball court
- Petanque court
- Jogging circuit
- Bike path
- Yoga palapa
- Yoga deck with cenote view
- Cenote for swimming
- Children's pool
- Splash area
- Play area
- Linear park
- Mini market
- Coffee shop
- Restaurants
- Dry cleaning and laundry
- Pharmacy

- Offices
- Exclusive restaurant for residents
- Open kitchen
- Cenote bar
-

SERVICES

- Grooved concrete pavement
- Electrical, rainwater, and sanitation installations
-

PROPERTY STATUS

- Title of property, legal certainty.

-

LOCATION

Land for sale in Region 11 in Tulum, Quintana Roo, Mexico.

- 12 minutes from Las Palmas Beach
- 12 minutes from Paraíso Beach
- 13 minutes from Santa Fe Beach
- 51 minutes from Tulum International Airport

OFFICIAL PRICE

The official price of this property is in Pesos prices in US dollars, are provided as a reference. For purchase, the exchange rate of the day will be applied.

The images used for this advertisement are from the general project and do not correspond to any particular lot.

The image of the lot is for reference only; the land may vary in characteristics and location.

Schedule your appointment to visit the area or call us to answer your questions.

#Tulum #Tulumproperties #Tulumlistings #selvacorealty #tulumrealestate
#realestatetulum #selvacomercial #commercialrealestatemexico
#commercialrealestate #tulumcommercialrealestate
#tulumcommerciallistings #landbankingtulum #landbankingmexico
#commerciallandtulum #lots&landtulum #lotsforsaleTulum #landforsale
#lotsforsaleTulum

Amenities

- Ballroom
- Business center
- Clubhouse
- Gym
- Movie Theater
- Pet friendly
- Restaurant
- Security 24/7
- Yoga area
- Bar
- Cenote
- Controlled access
- Maid service
- Paddle tennis
- Playground for children
- Sauna
- Swimming Pool

Location





SELVA & Co.
REALTY

MX 984 803 2058 / US 805 308 2900

www.selvacorealty.com