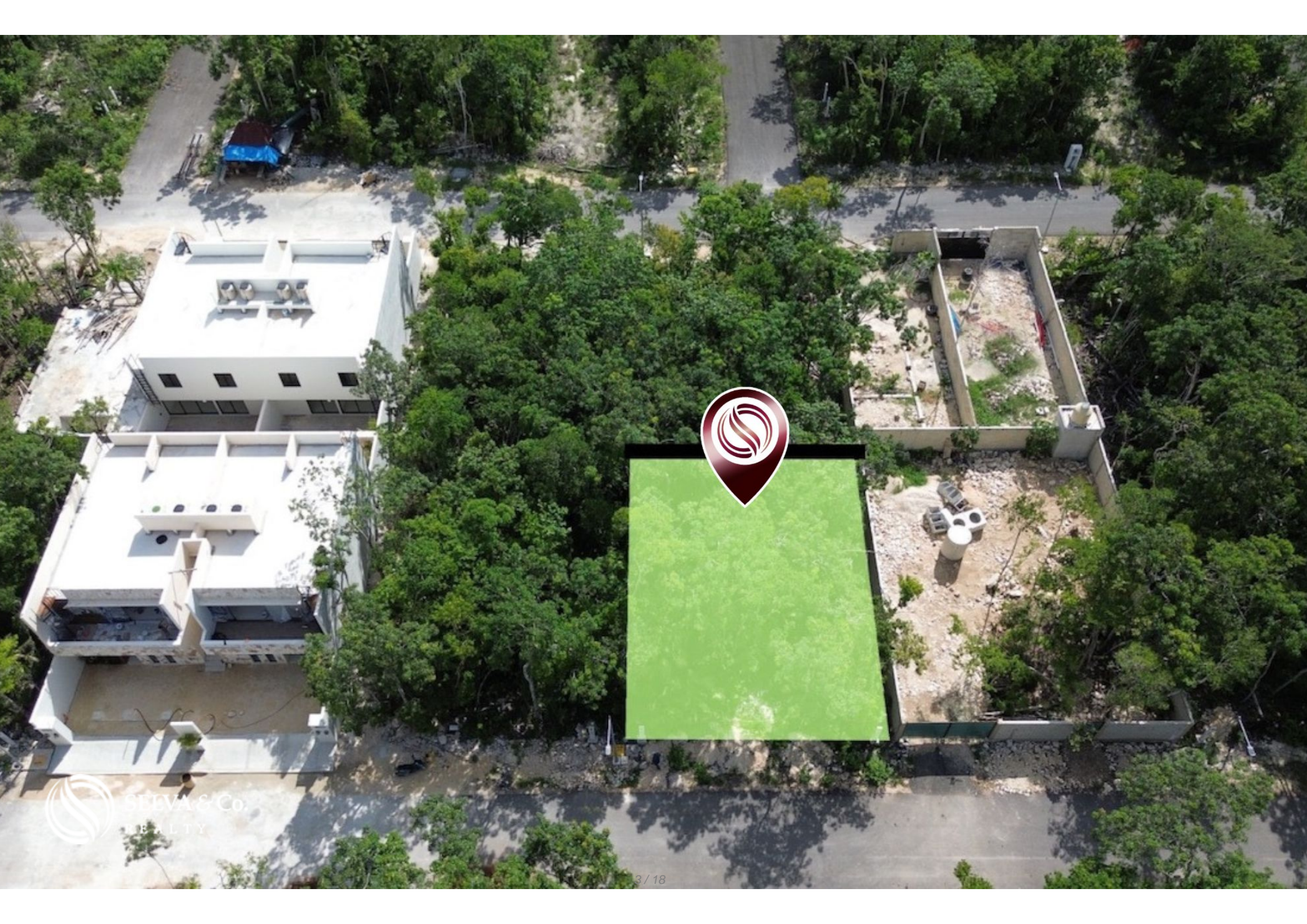


Land for single-family and multi-family vertical use, for sale in Tulum.

<i>ID: ELTU213</i>	<i>Location: Tulum</i>
<i>Zone: Region 2</i>	<i>Type: Lots</i>
<i>Land: 160 m2 / 1,722.24 ft</i>	

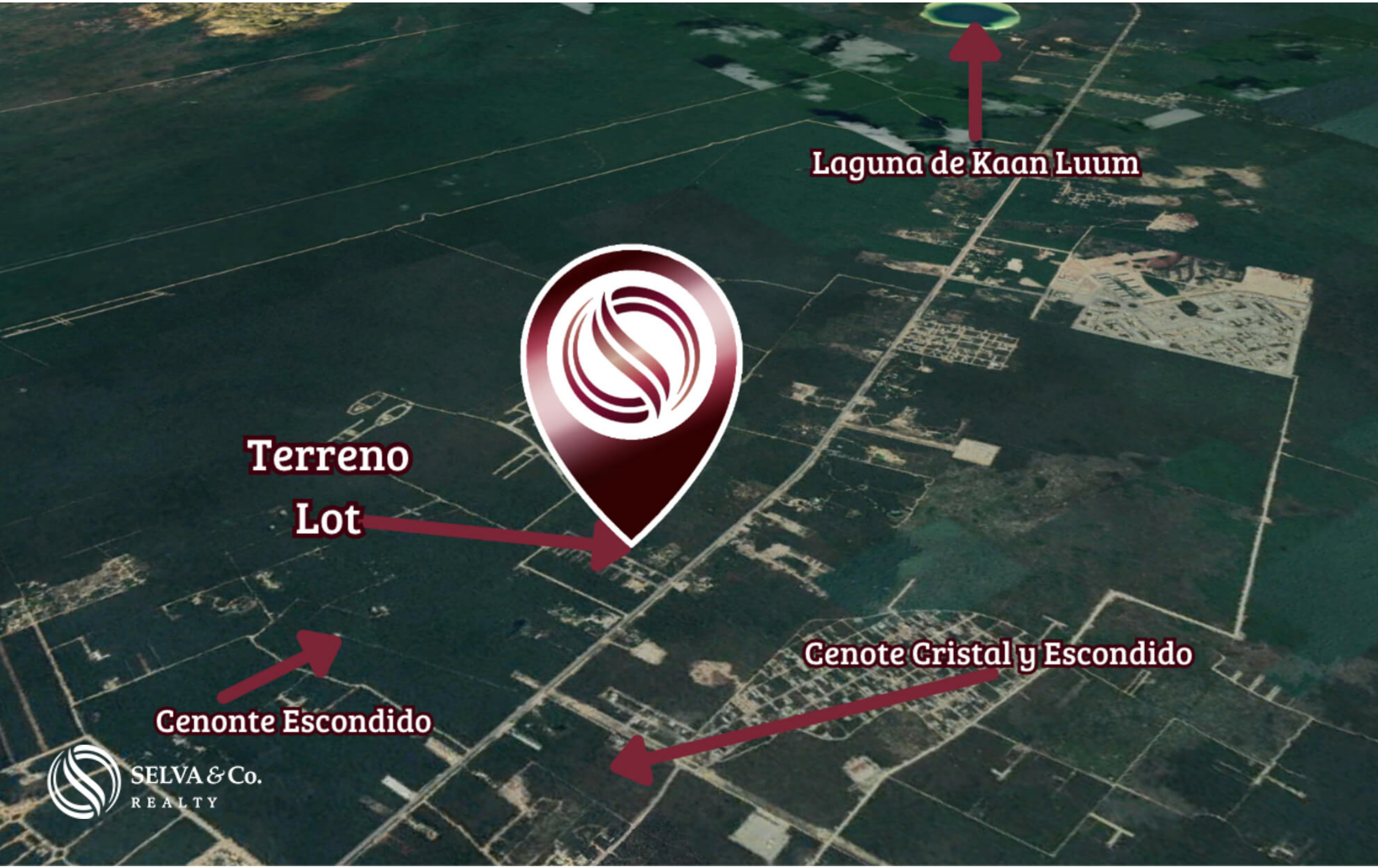












Laguna de Kaan Luum

Terreno

Lot

Cenonte Escondido

Cenote Cristal y Escondido



Laguna de Kaan Luum





Cenote Cristal y Escondido



Genote Escondido

Description

ELTU213 Jackeline Camacho

Land for single-family and multi-family vertical use, for sale in Tulum.

Land with multifamily zoning, ready to develop a project for apartments or joint housing units.

With excellent connectivity and proximity to essential services, this is the perfect place to create a residential complex that meets the expectations of the most demanding buyers.

Development Land in Tulum

Multifamily land for sale in Region 2 area of Tulum.

INVESTMENT OPPORTUNITY

Due to its location and price, this land is ideal for investment.

MEASUREMENTS

- 8x20
- Total: 160 m²

LAND CHARACTERISTICS

- Services available at the property line
- Zoning: ms/mb (medium-intensity vertical multifamily)

SERVICES

- Paved streets
- Underground electric service
- It is supplied with well water

PROPERTY STATUS

- Property title, legal certainty.

The image is for reference only; the land may vary in characteristics and location.

#Tulum #Tulumproperties #Tulumlistings #selvacorealty #Tulumrealestate

#realestateTulum

#landbankingtulum

#landbankingmexico

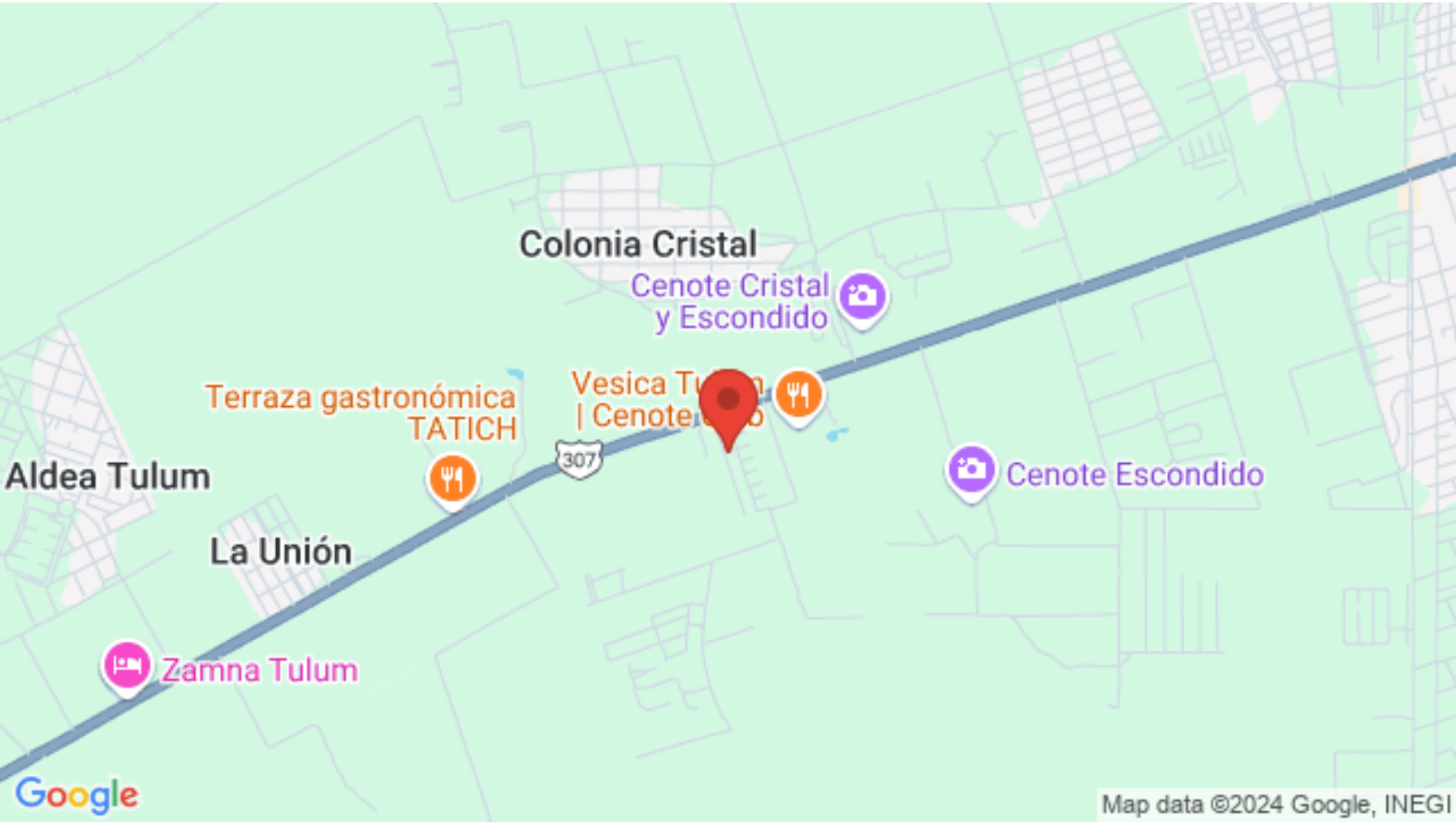
#lots&landTulum

#lotsforsaleTulum

#landforsale

#lotsforsaleTulum

Location





SELVA & Co.
REALTY

MX 984 803 2058 / US 805 308 2900

www.selvacorealty.com