



529 sqm residential land with pool in a gated community, Tulum.

<i>ID: DLTU215-3</i>	<i>Location: Tulum</i>
<i>Zone: Downtown</i>	<i>Type: Lots</i>
<i>Construction: 529 m2 / 5,694.16 ft</i>	

















SELVA & Co.
REALTY





Zona hotelera
Hotel zone

Centro
Downtown

Supermercado
Supermarket



TERRENO
LOT

Ruinas de Tulum
Tulum Ruins

Playa - Beach





SELVA & Co.
REALTY



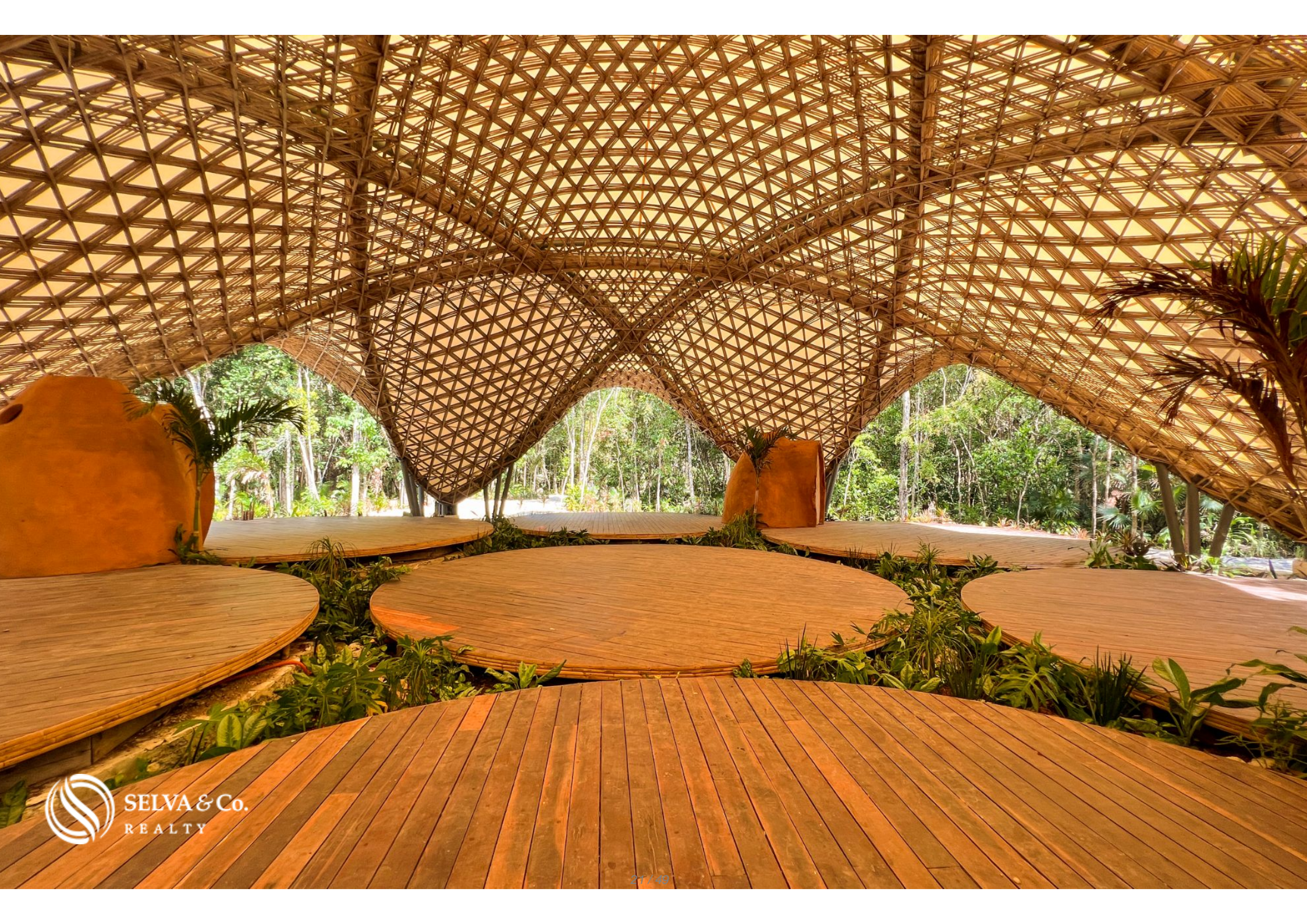




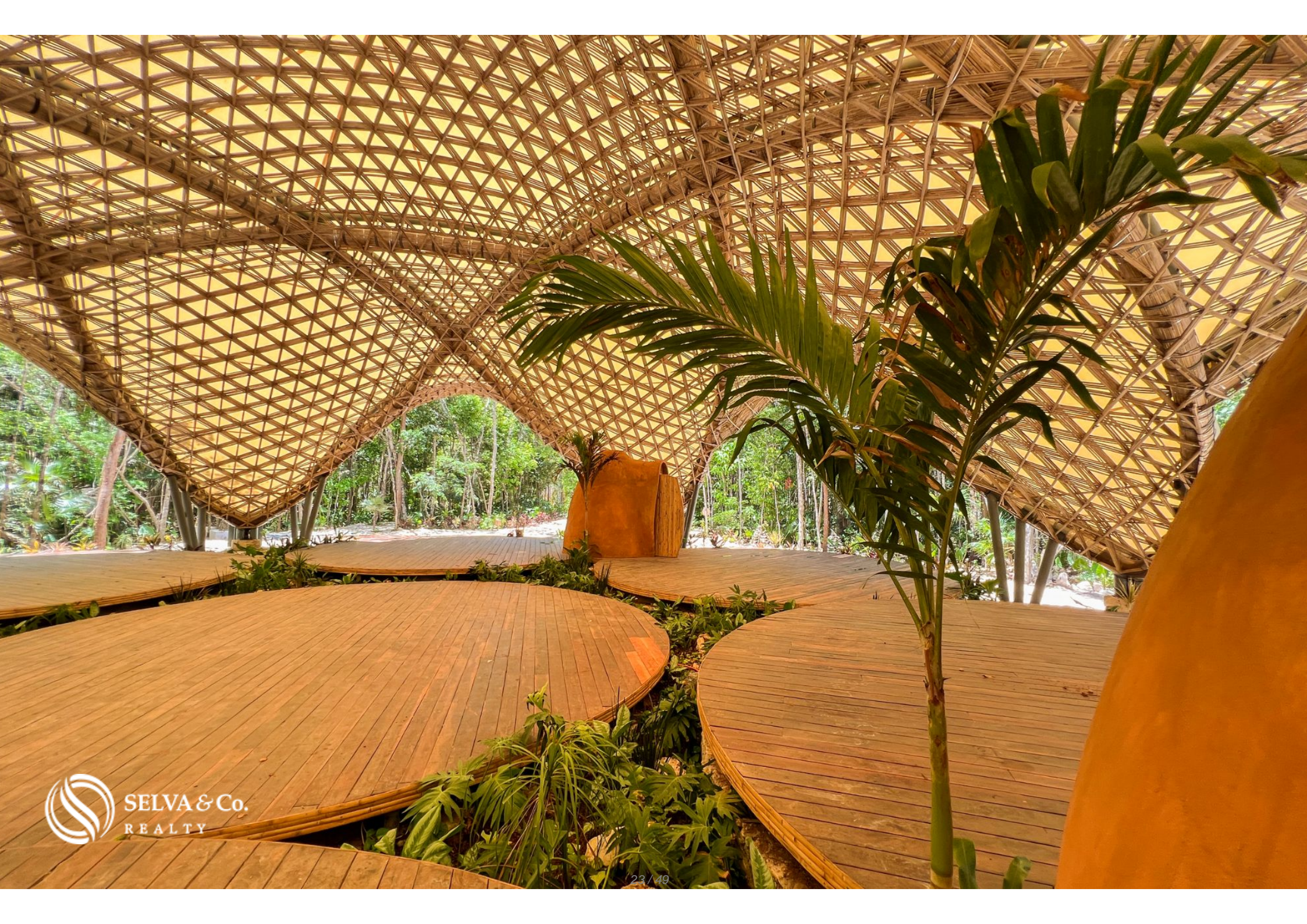






















SELVA & Co.
REALTY

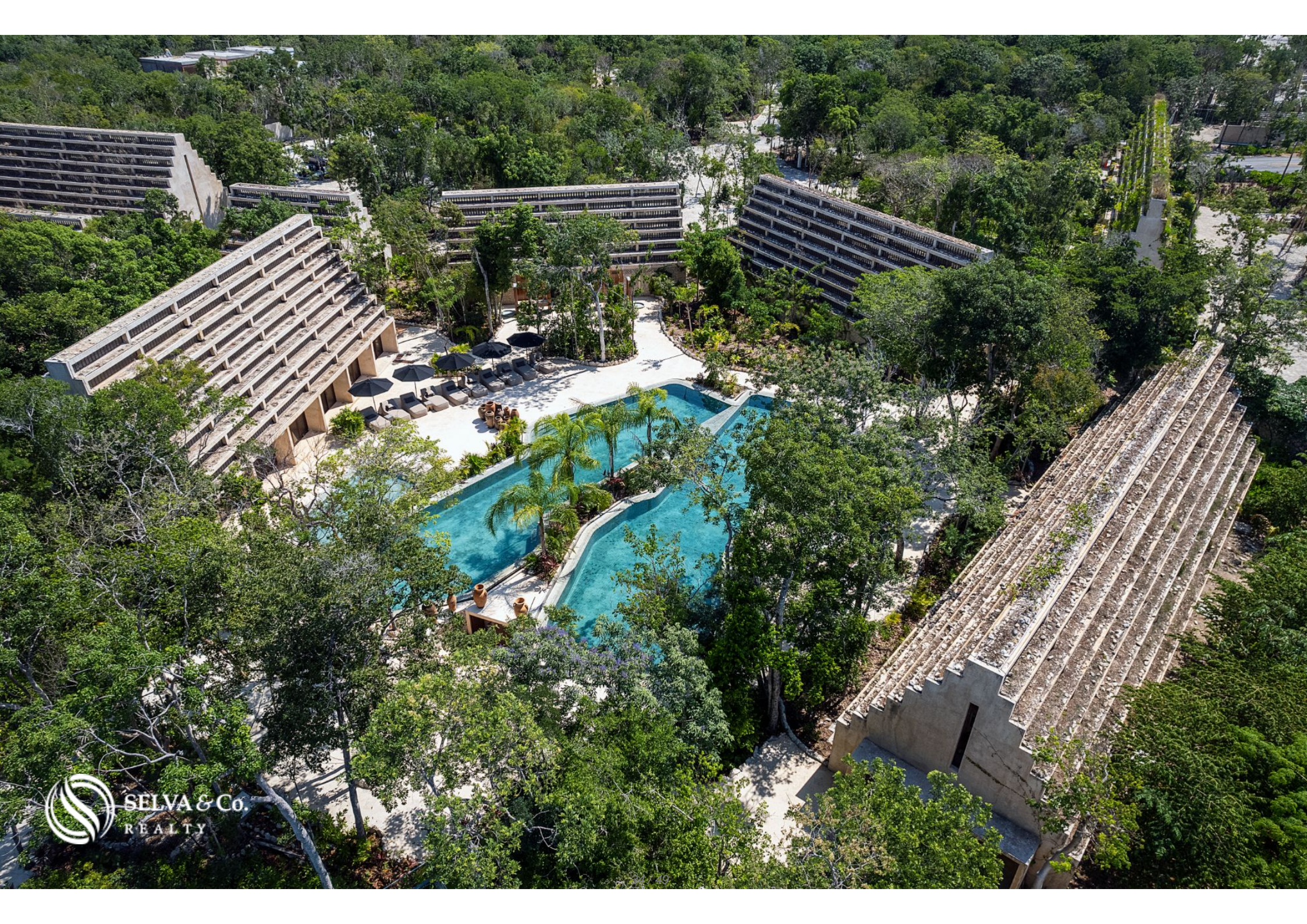




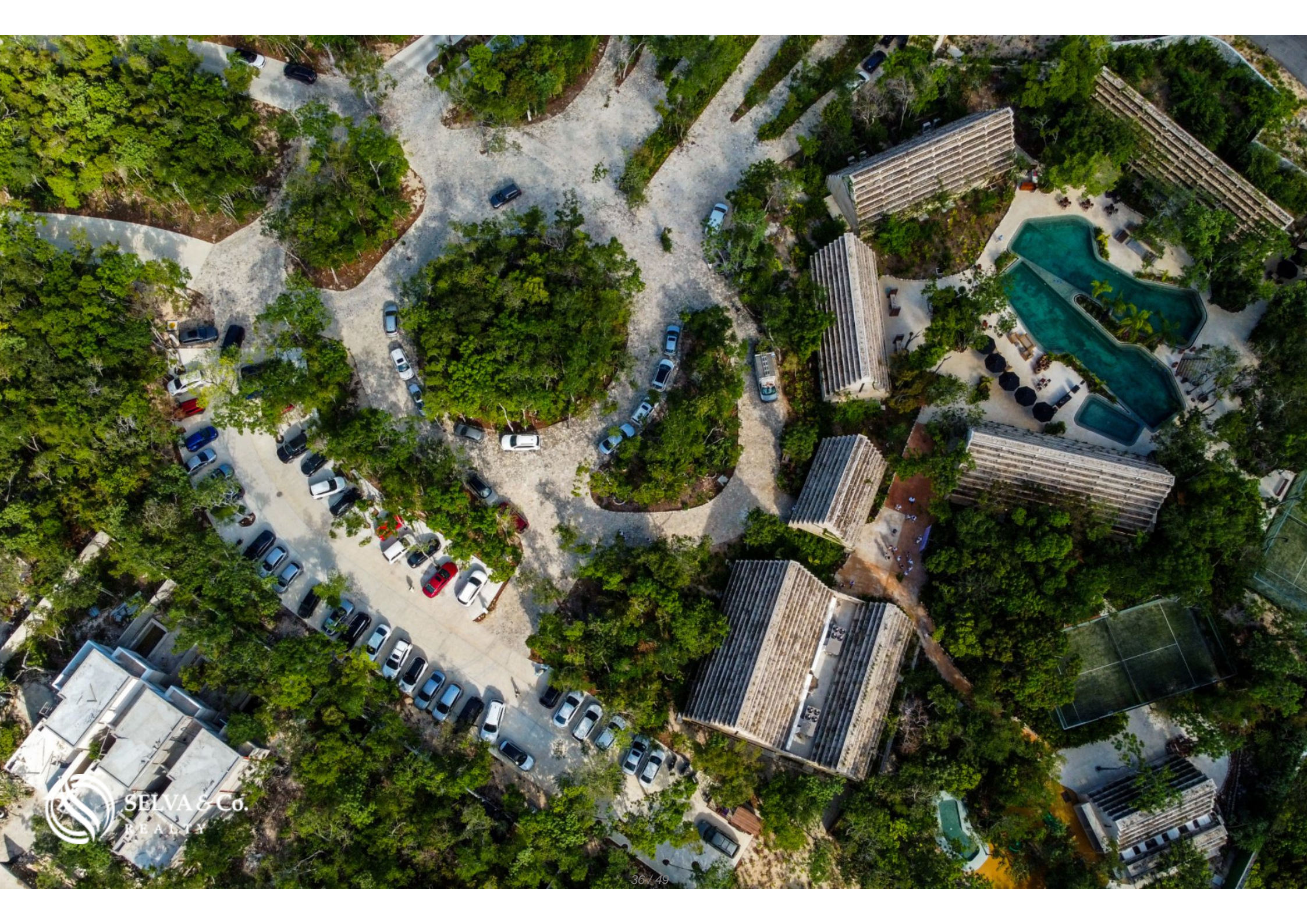














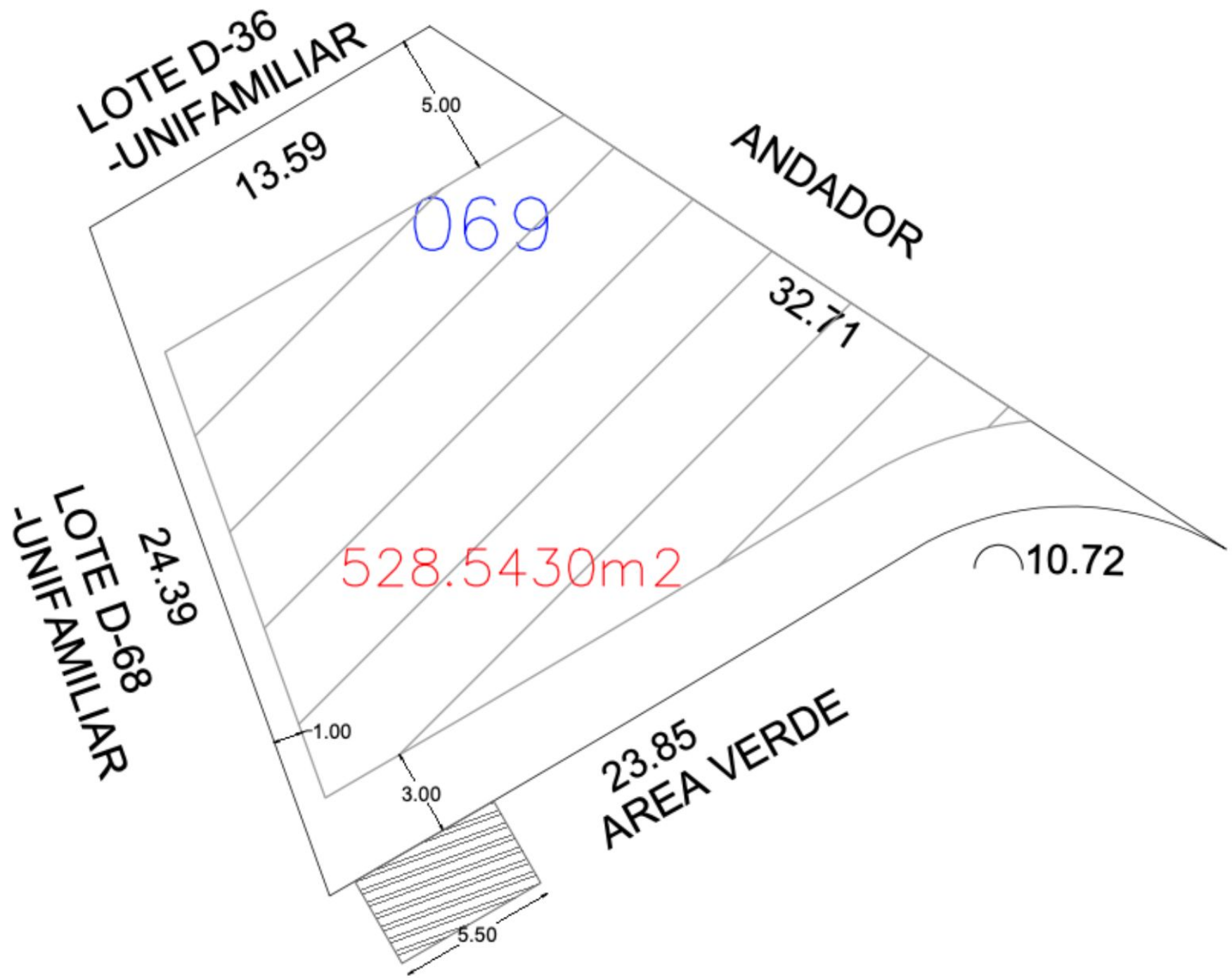
Playa - Beach
SELVA & Co.
"Paraiso"



Playa - Beach
SELVA & Co.
"Santa Fe"



 **Parque Nacional de Tulum**
SELVA & Co.
RE *Tulum national park*



Description

DLTU215-3

529 sqm residential land with pool in a gated community, Tulum.

Single-family residential plots within a development inspired by Mayan architecture, highlighting geometric shapes and the perfection of its constructions.

The designs will harmonize with nature and cater to families and children, offering an exclusive concept and environment in Tulum.

This development embodies a high-profile concept, providing a space where harmony and tranquility prevail by seamlessly blending architecture with the history of the ancient Mayan civilization.

STAY FIT

Maintain your fitness in the semi-Olympic pool with 4 lanes, play on tennis and paddle courts, enjoy a stroll on pedestrian trails, practice yoga, work out in the gym, or simply relax and admire the incredible architecture and green areas from the viewpoint. You'll have a different activity to do each day, all within steps of your residence.

SENSORY PARK

A unique concept in Mexico, created with the vision and millennia-old tradition of the Mayans. It consists of three main elements: Entrance, multifunctional center, and viewpoint.

MULTIPURPOSE HALL

For your social events, find an ideal space to shine as a host, organizing the best parties within the development.

FOR THE LITTLE ONES

This development caters to a family-friendly environment, providing a children's area where they can learn, play, and have fun. It includes a playground and a children's pool.

SPA

Find total relaxation just steps from your residence. You'll have a dedicated area to pamper yourself, including a spa with a massage area, steam room, sauna, showers, and a hydro-massage Jacuzzi.

AMENITIES AND SERVICES

24/7 Security

Gated community

Car lobby

Parking

Reception

Events hall

Social area

Terrace

Snack area

Sunbathing areas

Semi-Olympic pool

Children's pool

Children's play area

Paddle court

Gym

Yoga room

Spa

Changing rooms

LAND FEATURES

Services at the land

Land use: Residential

Cos: 60%

Cus: 170%

Height: 10 meters / 3 levels.

MEASUREMENTS

Residential plots from 300 sqm to 800 sqm.

SERVICES

Paved streets

Water service

Electricity

Drainage.

PROPERTY STATUS

Title deed, legal certainty.

LOCATION

Land for sale in the North Zone, Tulum, Residential area close to downtown, white sandy beaches, and tourist attractions.

5 minutes from the Tulum Archaeological Zone.

10 minutes from the beach.

45 minutes from Playa del Carmen.

50 minutes from Tulum International Airport.

DELIVERY DATE

Land available for immediate delivery.

If you would like more information about the land or to learn more about the real estate market in the Tulum area, contact us; we will be happy to help you on your new investment.

The official price of this property is in pesos; the price in dollars is a reference. The

exchange rate of the day will be used for the purchase.

Schedule your appointment to visit the area or call us to answer your questions.

#Tulumproperties #Tulum #Tulumlistings #selvacorealty #tulumrealestate
#realestatetulum #landbankingTulum #lotsandlandTulum #lotsforsaleTulum
#landforsale

Property details

- Terrace

Amenities

- Gym
- Paddle tennis
- Pool for children
- Spa
- swimming pool
- Tennis court
- Lobby
- Playground for children
- Security 24/7
- Sundeck area
- Swimming Pool
- Yoga area



SELVA & Co.
REALTY

MX 984 803 2058 / US 805 308 2900

www.selvacorealty.com