



SELVA & Co.
REALTY

www.selvacorealty.com



Penthouse with infinity pool, bar, yoga area, and gym in Aldea Zamá.

<i>ID: DTU246-5</i>	<i>Location: Tulum</i>
<i>Zone: Aldea Zama</i>	<i>Type: Penthouse</i>
<i>Bedrooms: 3</i>	<i>Bathrooms: 3</i>
<i>Construction: 263 m2 / 2,830.93 ft</i>	



All You Need is Love

Stay present





All You Need is Love





Stay Present

Stay Present









**Supermercado
Supermarket**

**Playas
Beaches**

**Parque Nacional Tulum
Tulum national park**



**DEPARTAMENTO
APARTMENT**





All You Need is Love



 SELVA & Co.
REALTY

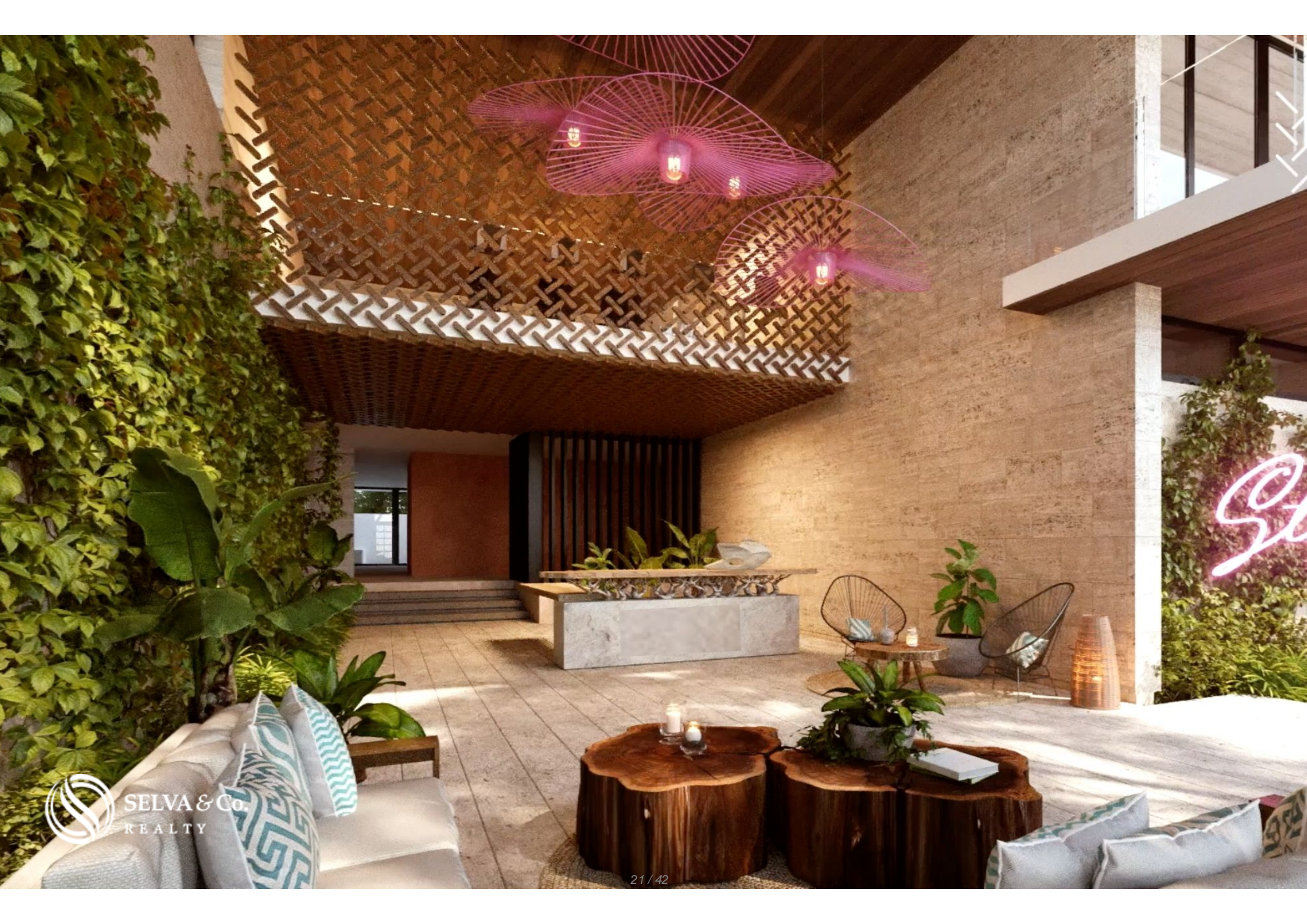














Stay present







Aco

Stay please



SELVA & Co.
REALTY



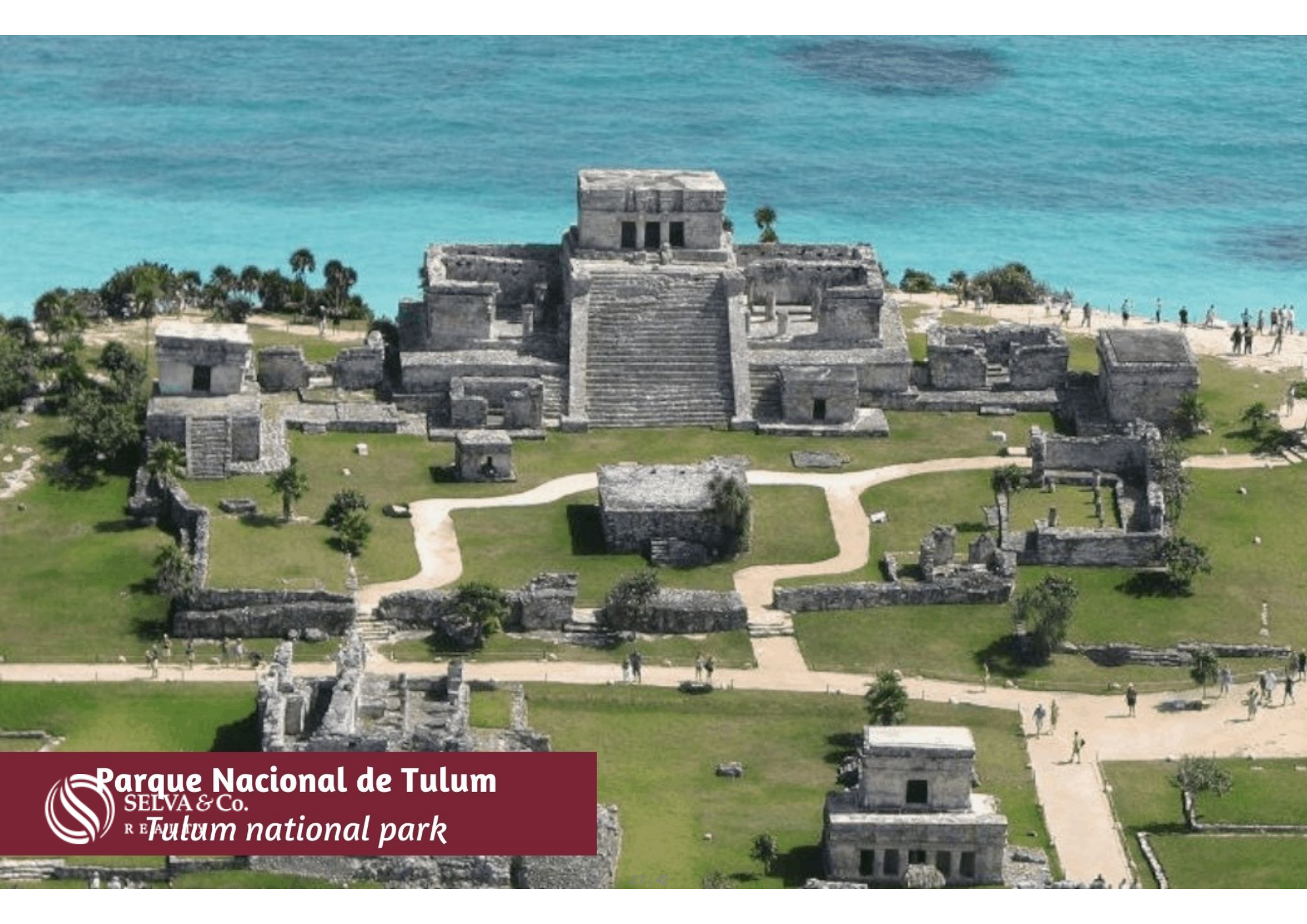
Audi



Stay here



SELVA & Co.
REALTY



 **Parque Nacional de Tulum**
SELVA & Co.
RE *Tulum national park*



 **Parque Nacional de Tulum**
SELVA & Co.
Tulum national park



Playa - Beach
SELVA & Co.
Las Palmas



Playa - Beach
SELVA & Co.
"Paraiso"



Playa - Beach
SELVA & Co.
"Santa Fe"



PLANTA BAJA



ROOF GARDEN

Description

DTU246-4

Penthouse with infinity pool, bar, yoga area, and gym in Aldea Zamá.

Spacious apartments, the largest in the area, with luxury finishes.

Located in Aldea Zama, Tulum's first planned community, with underground services, green areas, and a bike path to the hotel zone and beach area.

Live in a cutting-edge international real estate project with exceptional infrastructure, defining modern life in Riviera Maya by merging tradition, nature, and Tulum's mystique with contemporary living.

PRIVATE POOL

Some units feature a private pool; ask for availability.

COMMON TERRACE

On the top floor, you will find a common area with an infinity pool, the perfect spot for sunbathing or relax in the shaded area and enjoy the breeze.

ENTERTAINMENT BAR

Host your private events or enjoy the neighborhood gatherings on an equipped terrace bar that includes chairs and tables.

KEEP IN SHAPE

Do you like to work out? This development offers a fully equipped gym for residents.

LOCK OFF ask for availability

Many units feature a lock-off design, enabling to rent one room while using the other without compromising privacy. Ideal for vacation rentals, allowing to rent each

room separately.

AMENITIES

Deck

Roof bar

Sky pool

Yoga site

Gym

Lobby

Elevator

KITCHEN

Prepare delicious recipes in this fully equipped kitchen with custom cabinets and granite countertops.

KITCHEN EQUIPMENT

Induction stove.

HIGHLIGHTS OF THE APARTMENT

Green design surrounded by nature throughout the apartment.

Bright with large windows for natural light in every essential space.

Floor-to-ceiling windows in bedrooms and living areas for an indoor-outdoor lifestyle.

Private parking for 1 car

Laundry area

Open design bathrooms

Inverter AC

Electric water heater

PENTHOUSE: Includes a room on the top floor.

FINISHES

Continuous terrace flooring.

Maple wood finished carpentry

LED illumination

LOCATION

Apartment for sale in Aldea Zamá, Tulum.

First planned community with underground services, green areas, playgrounds, commercial area, and bike path to the hotel zone.

Aldea Zamá features a commercial area with restaurants, boutique hotels, coffee shop and original design shops.

10-15 minutes by bike from downtown and the beach area.

RENT YOUR PROPERTY

Development allows vacation rentals.

You can hire a property management and vacation rental agency. Rent your property while you're away; they'll take care of everything. We can

recommend options in Tulum.

PRE-CONSTRUCTION INVESTMENT

Pre-sale. Estimated delivery: July 2025.

The images used for this advertisement are from the general project. They do not correspond to any particular residence.

If you want to learn more about the real estate market in Aldea Zamá contact us, we will be happy to help in your new investment in Tulum.

Prices may vary according to the progress of construction. Contact us to send you the price list and updated information.

Schedule your appointment to visit the area or call us to answer your questions.

#TulumBySelvacorealty #Tulumproperties #Tulum #Tulumlistings
#selvacorealty #AldeaZamaRealEstate #tulumrealestate
#realestatetulum #condoforsaletulum #preconstructioncondosTulum
#presalecondosTulum #penthousesTulum #Penthouselifestyle
#penthouserealestate

Property details

- Lock off

- Terrace

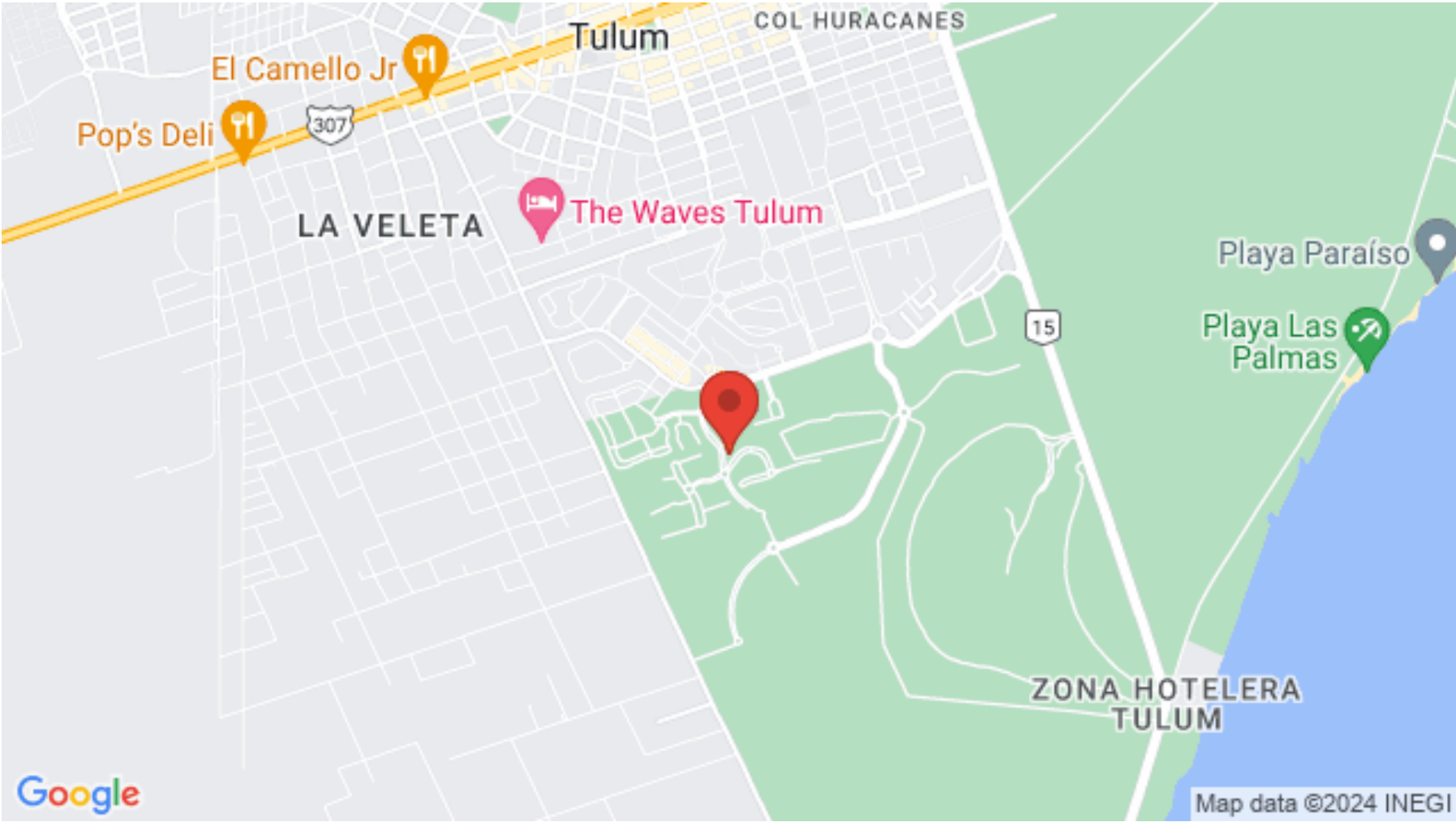
Amenities

- Elevator

- Lobby

- Gym

Location





SELVA & Co.
R E A L T Y

MX 984 803 2058 / US 805 308 2900

www.selvacorealty.com