



# Penthouse with garden for sale in Polanco, pool, jacuzzi, gym in Mexico City

|                      |   |
|----------------------|---|
| <i>ID: DCM235-7</i>  | <i>Location: Mexico City</i>              |
| <i>Zone: Polanco</i> | <i>Type: Condos</i>                       |
| <i>Bedrooms: 3</i>   | <i>Bathrooms: 3</i>                       |
| <i>Parking(s): 4</i> | <i>Construction: 404 m2 / 4,348.66 ft</i> |













SELVA & Co.  
REALTY



 SELVA & Co.  
REALTY







**Museo Soumaya**

**Plaza Antara  
Antara Shopping mall**

**Departamento  
Condo**

**Bosque de Chapultepec  
Chapultepec forest**











 SELVA & Co.  
REALTY







 SELVA & Co.  
REALTY





















 SELVA & Co.  
REALTY







## Area de Jardín - *Garden area*







# Vestibulo - Lobby





Alberca con  
carril de nado

*Pool with  
swim lane*



# Jacuzzi





# Gimnasio - *Gym*





# Spa



# Ludoteca - *Toy Library*



# Salón ingles - Living room



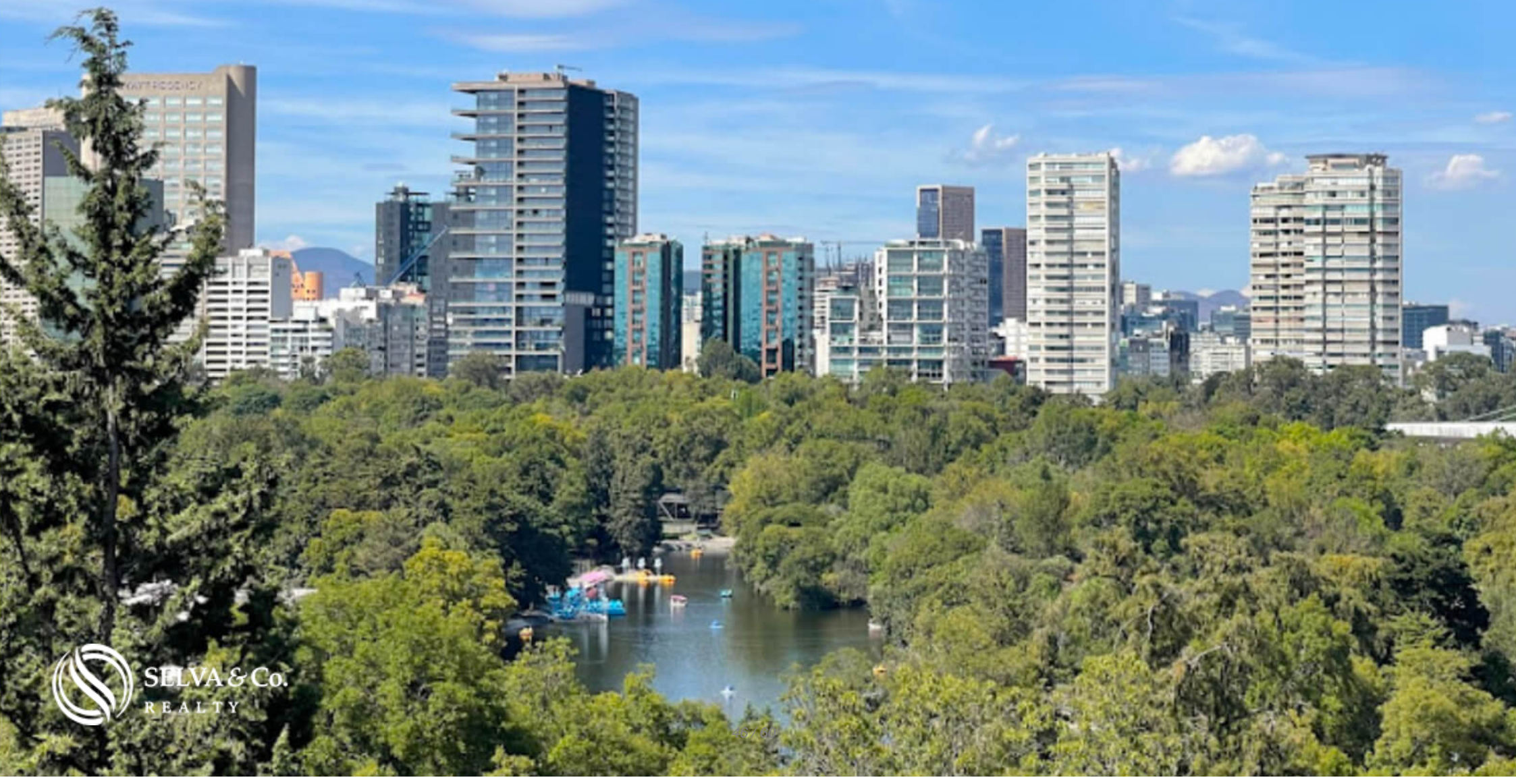


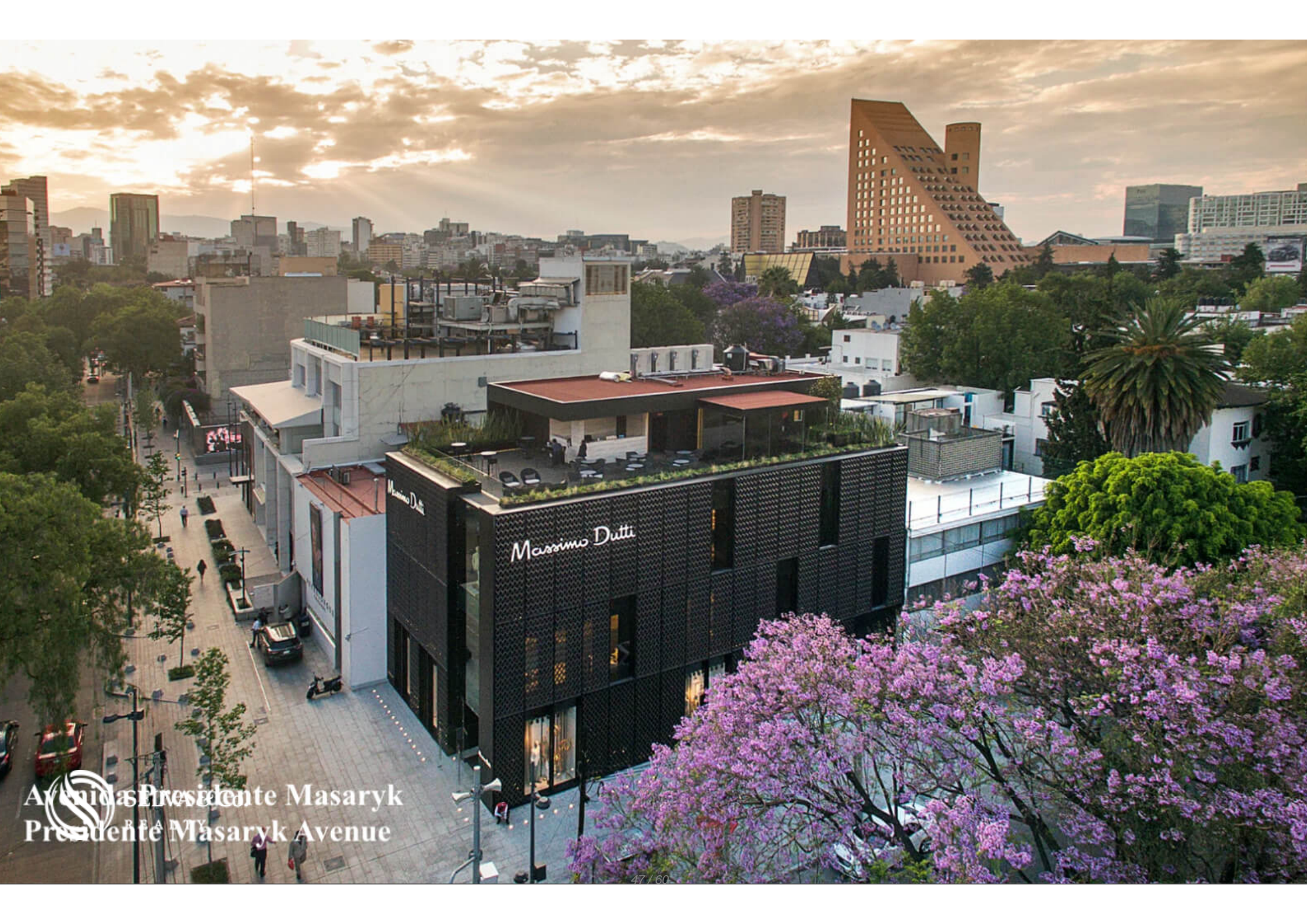


Jardín  
Vertical

*Garden  
Vertical*

# Bosque de Chapultepec Chapultepec forest





Av. Presidente Masaryk  
Presidente Masaryk Avenue



 SELVA & Co.  
REALTY

Soumaya



Museo de arte contemporaneo / Contemporary Art Museum



## Description

DCM235-7

Penthouse with garden for sale in Polanco, pool, jacuzzi, gym in Mexico City

2 luxury towers located in Polanco in one of the most exclusive areas, it is a project by a renown designer, with multiple luxury amenities and services.

Three-bedroom apartment designed with modern and elegant architecture, large, open spaces and natural light in all areas. In addition to a large 19 m2 terrace, ready for you to customize however you like.

### POOL AND JACUZZI

Enjoy your mornings, afternoons or even nights in this beautiful pool with a swimming lane. In addition to a jacuzzi in the outdoor area surrounded by nature, so that your relaxation session is complete.

## GREEN BUILDING

This building is full of elegance and nature, since it has a vertical garden that goes from the ground floor to the top floor. Planters in different areas and natural light entrances that extend throughout the building.

## SPA, SAUNA AND STEAM

Find total relaxation steps from your residence.

You will have an area completely dedicated to pampering yourself, a spa with a massage area, steam, sauna, showers and bathrooms.

## LOUNGE

Its elegant and sophisticated interior design will make you not want to leave there, it has a pool table and lounge chairs. It is the ideal place to tell anecdotes and enjoy board games with friends.

## FOR THE LITTLE ONE

This development is designed in a family environment, so for the youngest members of the family, it has a Playroom where they can learn, play and have fun. The best thing is that it is located in the cafeteria area, you can relax while you keep an eye on your little one.

## KEEP IN SHAPE

Do you like to exercise? This development has a fully equipped gym for the use of its residents, with a variety of exercise machines. You will have all the necessary tools to improve your physical condition.

## AMENITIES AND SERVICES

Pool with swimming lane

Motor lobby with valet parking

Lounge for adults

Sauna

Steam

Spa for men and women

Spa baths

Gym

Playroom

Jacuzzi

## BATHROOM WITH DOUBLE SINK

Large bathroom in the main bedroom with a double sink, everyone will have their space to brush their teeth or get ready for those special days.

## KITCHEN

Prepare the most delicious recipes in this built in kitchen, with custom cabinets and granite countertop, with a comfortable closed design.

## HIGHLIGHTS OF THE DEPARTMENT

Bright apartment with large windows that allow each of the most important spaces to have natural light.

Master bedroom with en-suite bathroom, walk-in closet, ample space.

Private parking for 3 or 4 cars.

Television room.

Laundry room

Terrace and cellar

Direct elevator access to the apartment.

**PENTHOUSE (ASK ABOUT AVAILABILITY)**

Roof Garden of 130 m<sup>2</sup>

Service room with private bathroom

**LOCATION**

Apartment for sale in Polanco, an exclusive area with the Miguel Hidalgo zone in Mexico City, surrounded by gourmet restaurants, important avenues, shopping

areas, supermarkets, parks and entertainment.

6 Minutes from the Chapultepec Zoo

5 minutes from the Museum of Contemporary Art and ?Tamayo? Park

40 minutes from Mexico International Airport.

### RENOWN DEVELOPER

Developer with several projects in Mexico City, excellent track record of on-time delivery and quality finishes. Widely recommended.

### AUTHOR PROJECT

Project by famous international real estate developer John Hitchcox and Philippe Starck's Yoo design studio.

### NEW APARTMENT

Apartments ready for immediate delivery, you can move in right away.

The images used for this advertisement are from the general project. They do not correspond to a private residence.

If you want more information about the condo or learn more about the real estate market in Polanco, contact us, it will be a pleasure to advise you on your new investment in CDMX.

The official price of this property is in pesos, the price in dollars is a reference. The exchange rate of the day will be used for the purchase.

Schedule your appointment to visit the area or call us to answer your questions.

#MexicoCitybyselvacorealty #CDMXproperties #CDMX #Mexicolistings  
#selvacorealty #selvacomercial #PolancoRealEstate #CDMXrealestate  
#realestateMexico #condoforsaleMexico #salecondoscdmx



## Property details

- Integral Kitchen
- Terrace
- Roof Top

## Amenities

- Didactic Playroom
- Gym
- Sauna
- Swimming Pool
- Elevator
- Jacuzzi
- Spa
- Valet parking

## Location





**SELVA & Co.**  
R E A L T Y

MX 984 803 2058 / US 805 308 2900

[www.selvacorealty.com](http://www.selvacorealty.com)