



1,301 m2 land with clubhouses, pet-park, gardens and more. For sale Merida.

<i>ID: DLME201-6</i>	<i>Location: Yucatán</i>
<i>Zone: Mérida North Zone</i>	<i>Type: Lots</i>
<i>Construction: 1,301 m2 / 14,003.96 ft</i>	











 SELVA & Co.
REALTY



 SELVA & Co.
REALTY





 SELVA & Co.
REALTY



Progreso

Terreno / Land

**Yucatan
Country Club**



**Zona arqueologica
Archaeological area**

Merida







 SELVA & Co.
REALTY









 SELVA & Co.
REALTY







 SELVA & Co.
REALTY



 SELVA & Co.
REALTY



Centro de Merida

Merida Center
SELVA & Co.
REALTY



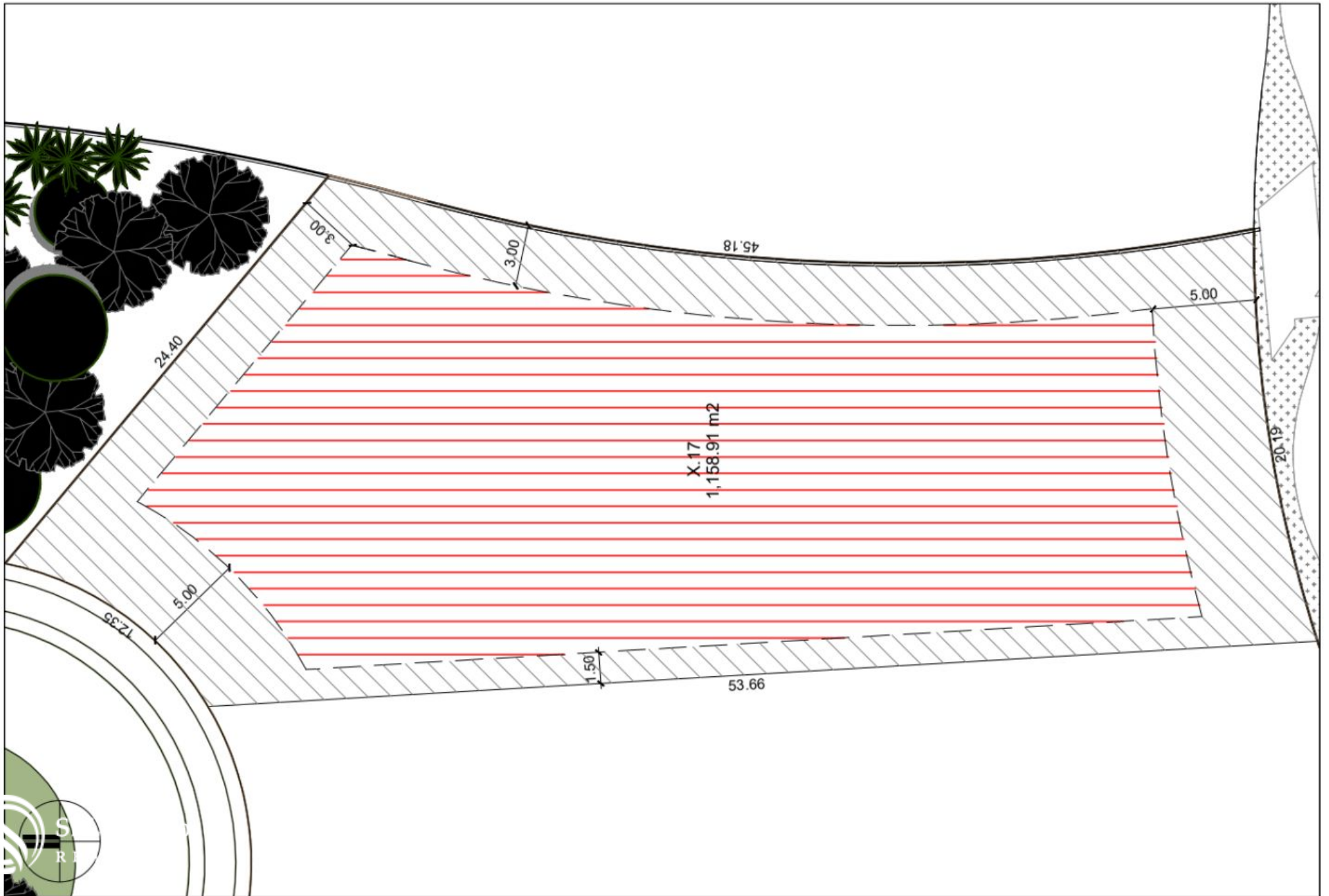


 SELVA & Co.
REALTY

Progreso Yucatán

Yucatan Country Club





Description

DLME201-6

1,301 m2 land with clubhouses, pet-park, gardens and more. For sale Merida.

Residential lot located between Merida, the safest city in the entire country and Progreso with the best beaches in Yucatan. Close to the best universities, shopping centers, hospitals, creative spaces and much more.

Development that combines design, architectural modernity and environmental technology.

With 3 clubhouses, sport fields, trails, gardens, pet park, playground for children. You will have everything at your fingertips.

CLUBHOUSE

This residential development has 3 clubhouses with all the amenities and services. Specifically distributed for the proximity of its residents.

STUNNING GARDENS

Nature forms the main essence of development from inside to outside. Known as the largest infinite living garden in the southeast, it is made up of 36 hectares between large planters and pedestrian paths. What makes it different from the others, it combines urban planning and landscaping, it has living nature in each space of this residential area.

KEEP IN SHAPE

Stay fit in its pool with swimming lane, play on its tennis and paddle tennis courts, enjoy a walk on its pedestrian paths, exercise in the gym, or simply relax and contemplate its green areas, you will have a different activity to do each day and everything just steps from your residence.

COWORKING AREA

Working from home has never been better, enjoy a quiet space, with internet, ideal for working in a relaxed environment, a space where you can work and connect with your team without interruption. The best place to do ?Home office?.

PET FRIENDLY

The residential allows pets, and has an exclusive area for your dog to socialize and be free in a controlled and special environment for them. Enjoy your dog park.

ABOUT THE RESIDENTIAL

Main access

Access to services

Walking trails

Benches

Roads

Sport areas

Children's play area

AMENITIES

3 clubhouses

Pools

swimming channel

Gym

Playground

Children's Club

Management Office

Television Room

Sportbar

Pet park

Coworking

Bike path

Running circuit

Terraces

Bathrooms

2 paddle tennis courts

Snacks

Mixed courts

SERVICES

- Drainage with wastewater treatment plant
- Water supply
- Electric power
- General lighting
- Irrigation system for common areas
- Garbage collection

LOCATION

Lot for sale in Temanche, municipality of Merida Yucatan. Located on the Merida-Progreso highway. A few minutes from the main areas, shopping centers and points of interest in the city of Merida.

25 minutes from Merida

13 minutes of progress

15 minutes from the beach

12 minutes from archaeological zone

LANDSCAPING, AUTHOR DESIGN

Designed by renowned firms of architects and landscapers renown throughout the country.

#Meridabyselvacorealty #selvacorealty #selvacomercial #MeridaRealestate
#lots&landMeridaYucatan #lotsforsaleMerida #landforsale #lotsforsaleMerida

Property details

- Garden

- Terrace

Amenities

- Clubhouse

- Kids Club

- Pet friendly

- swimming pool

- Gym

- Paddle tennis

- Playground for children



SELVA & Co.
REALTY

MX 984 803 2058 / US 805 308 2900

www.selvacorealty.com