



SELVA & Co.
REALTY

www.selvacorealty.com



Condo with private pool, roof top, barbecue, gym, fire pit, pre-construction for sale in Aldea Zama, Tulum.

<i>ID: DTU311</i>	<i>Location: Tulum</i>
<i>Zone: Aldea Zama</i>	<i>Type: Condos</i>
<i>Bedrooms: 2</i>	<i>Bathrooms: 2</i>
<i>Levels: 1</i>	<i>Construction: 95 m2 / 1,022.58 ft</i>









 SELVA & Co.
REALTY

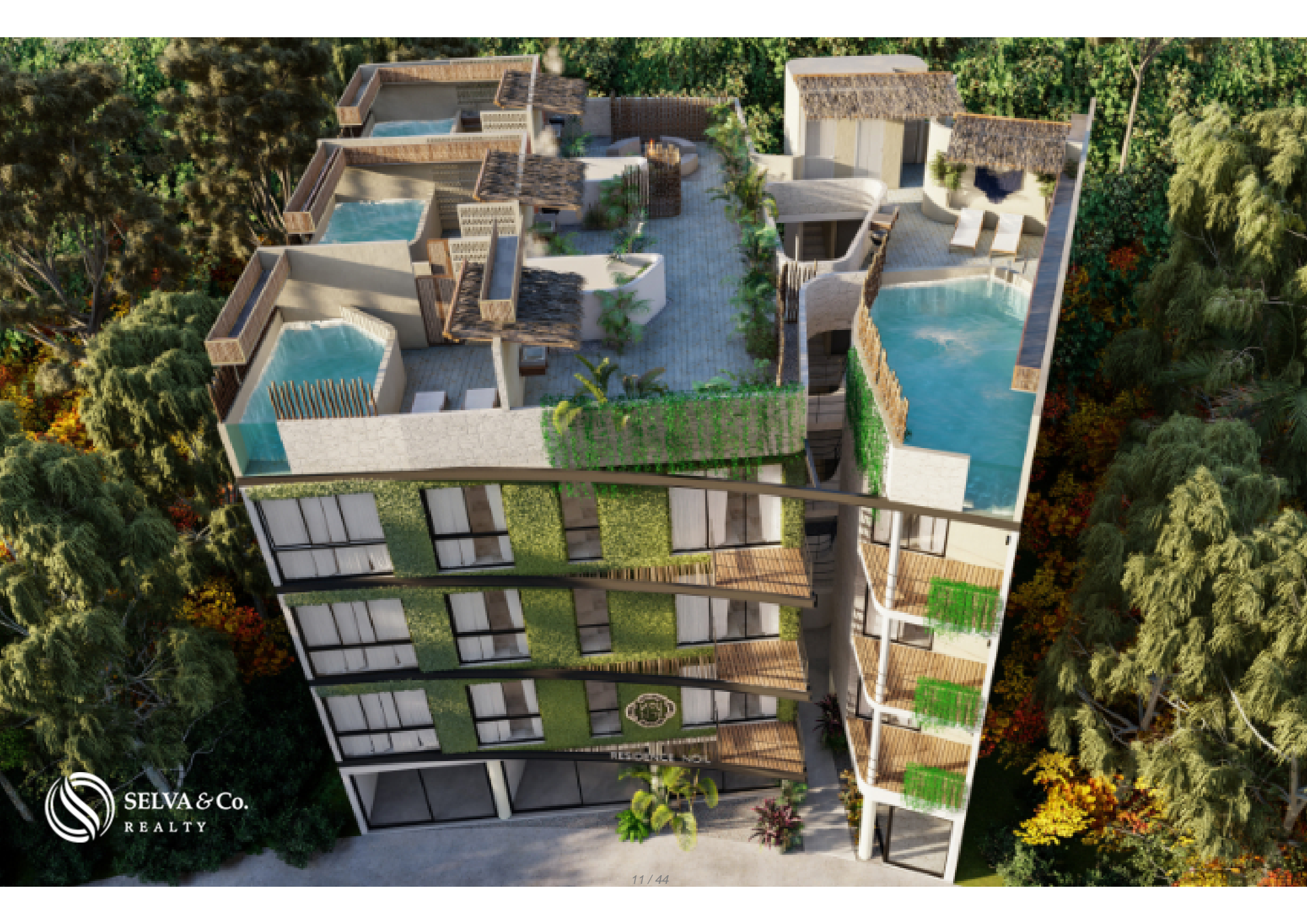


SELVA & Co.
REALTY









Biosfera de
Sian Kaan
Biosphere

Zona Hotelera
Hotel Zone

Ciclopista
Bike path

Ruinas Mayas
Mayan ruins

ALDEA ZAMA
EL DOWNTOWN DE TULUM

Centro
Tulum
Downtown





 SELVA & Co.
REALTY



 SELVA & Co.
REALTY



 SELVA & Co.
REALTY





 SELVA & Co.
REALTY







 SELVA & Co.
REALTY





 SELVA & Co.
REALTY



 SELVA & Co.
REALTY

RESIDENCE NO. 1













Campanella







Rossina



Description

DTU311

Condo with private pool, roof top, barbecue, gym, fire pit, pre-construction for sale in Aldea Zama, Tulum.

Condominium in the best location, the commercial area of Aldea Zama, restaurante, coffee shops, pedestrian and recreational areas nearby. You will have everything steps from your residence.

Building of 17 condominiums with a common area on the top floor with panoramic views.

ENTERTAINMENT BAR

Enjoy your private events or join in neighborhood events on a terrace with several bars equipped for entertainment, with tables and lounge chairs. There will always be a place to enjoy with your friends.

TERRACE

Roof top terrace equipped with bars, full bathroom, lounge area and fireplace, the ideal place for your meetings or to enjoy your free time with a panoramic view.

AMENITIES AND SERVICES

- Gym
- Elevator
- Rooftop pool

- 3 lounge spaces
- 4 entertainment bars
- Fire pit area
- Controlled access with closed circuit
- Energy saving lighting
- Agreement with beach club
- Rental Program
- Commercial premises.

HIGHLIGHTS OF THE CONDO

Large window that allow natural light to enter.

Built in kitchen with wooden cabinets, and granite or marble countertop.

Closet of rooms in wood.

LOCATION

Development located in Aldea Zama, the first planned community in Tulum, with underground services, green areas, playground for children, shopping area and bike path to the hotel zone, downtown area and beach area, just 10-15 minutes by bike.

This condominium is located in the commercial area and is surrounded by restaurants, boutique hotels, cafes and original design stores.

PLACES CLOSE TO THE CONDO

Rossina: Italian bakery and deli.

Nikkori: Sushi

Campanella Cremerie: Ice cream, cakes and coffee.

And many more

RENT YOUR PROPERTY

This development allows vacation rentals, rent your property while you are not using it, they will take care of maintaining it and receiving guests for you, you will not lift a finger.

INVESTMENT IN PRE-CONSTRUCTION

Condo in pre-sale.

If you want more information about the apartment or learn more about the real estate market in the Aldea Zama area, contact us, it will be a pleasure to advise you on your new investment in Tulum.

The official price of this property is in pesos, the price in dollars is a reference. For the purchase the exchange rate of the day will be used.

Prices may vary subject to availability, capital gains, etc. as it is a pre-sale project.

Schedule your appointment to visit the area or call us to answer your questions by clicking on the contact link.

Invest safely, call us to receive free advice.

#DTU311 #TulumBySelvacorealty #aldeazamalistings #Tulumlistings
#selvacorealty #selvacorealtyTulum #AldeaZamaRealEstate #investintulum
#condoforsaletulum #lifestyletulum #liveintulum #tulumrealestate #realestatetulum
#condoforsaletulum #Tulum #AldeaZamaTulum #condoforsaleTulum
#Tulumunder200K #realestateunder200k #condosunder200kMexico
#Tulumproperties #presalecondosTulum

Property details

- Private Pool
- Terrace

- Roof Top

Amenities

- Bbq Grill
- Elevator
- Swimming Pool

- Controlled access
- Gym

Location





SELVA & Co.
R E A L T Y

MX 984 803 2058 / US 805 308 2900

www.selvacorealty.com