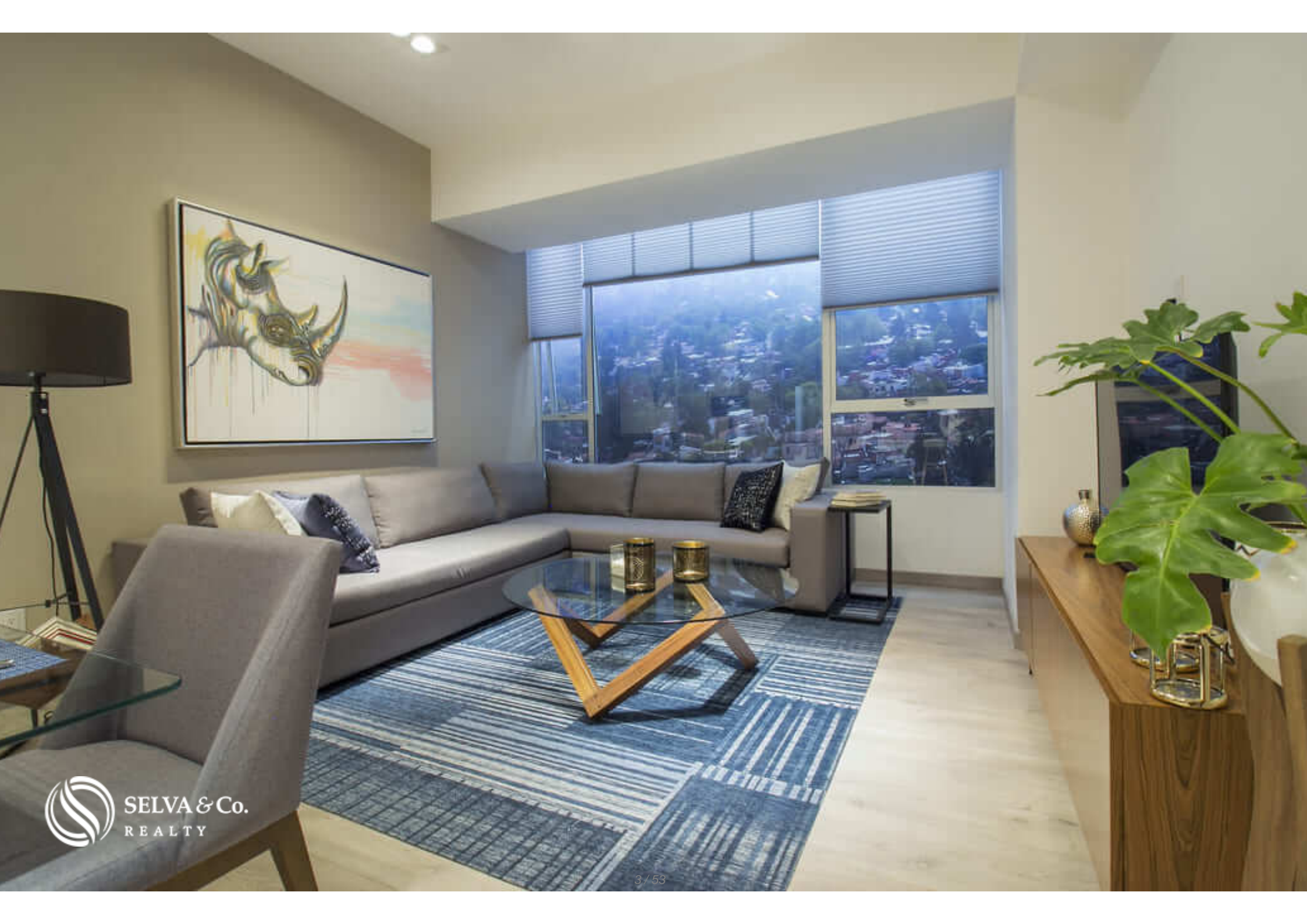
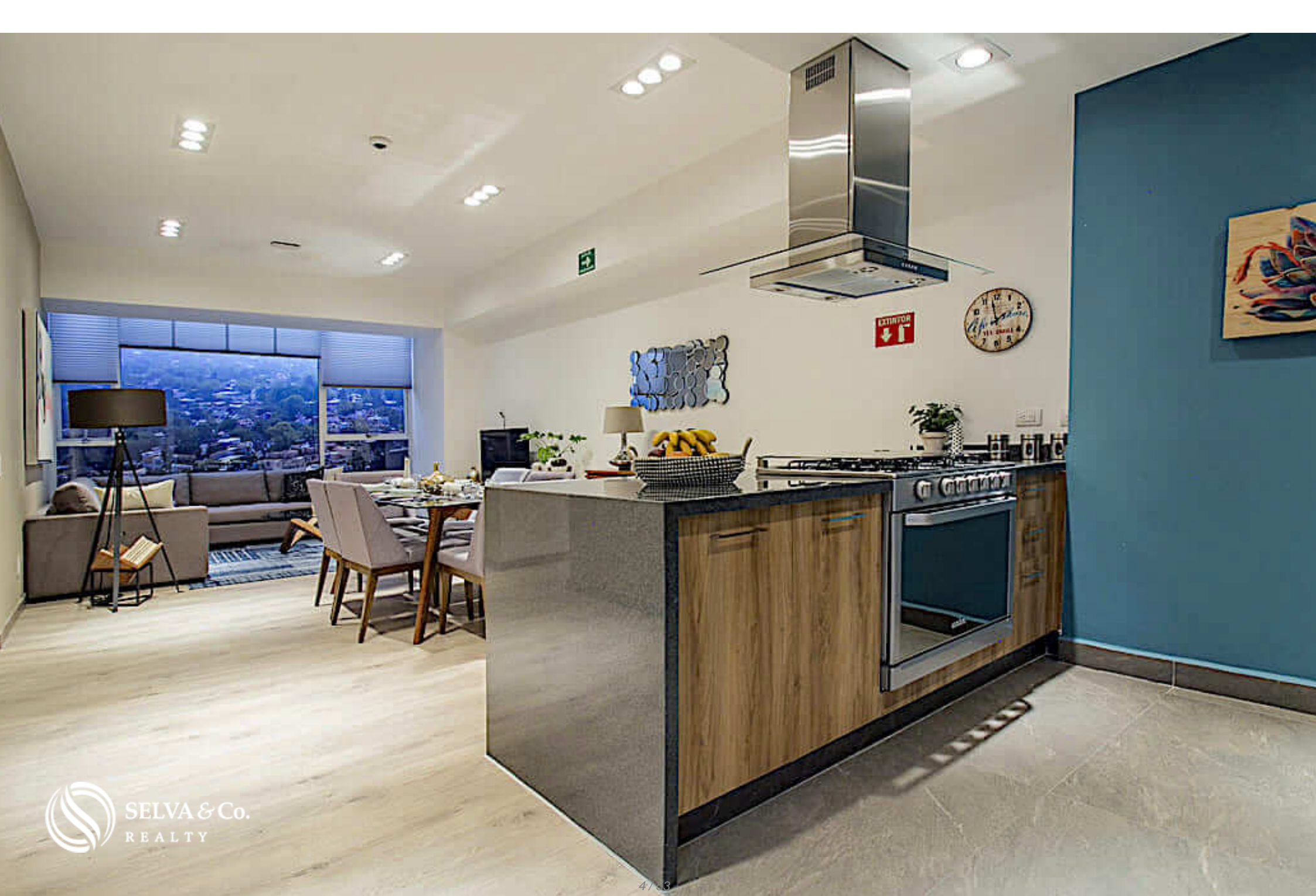




Double heigh apartment, Pet friendly, heated pool, cafeteria, sky lounge, playground for children, pre-construction for sale San Angel Mexico

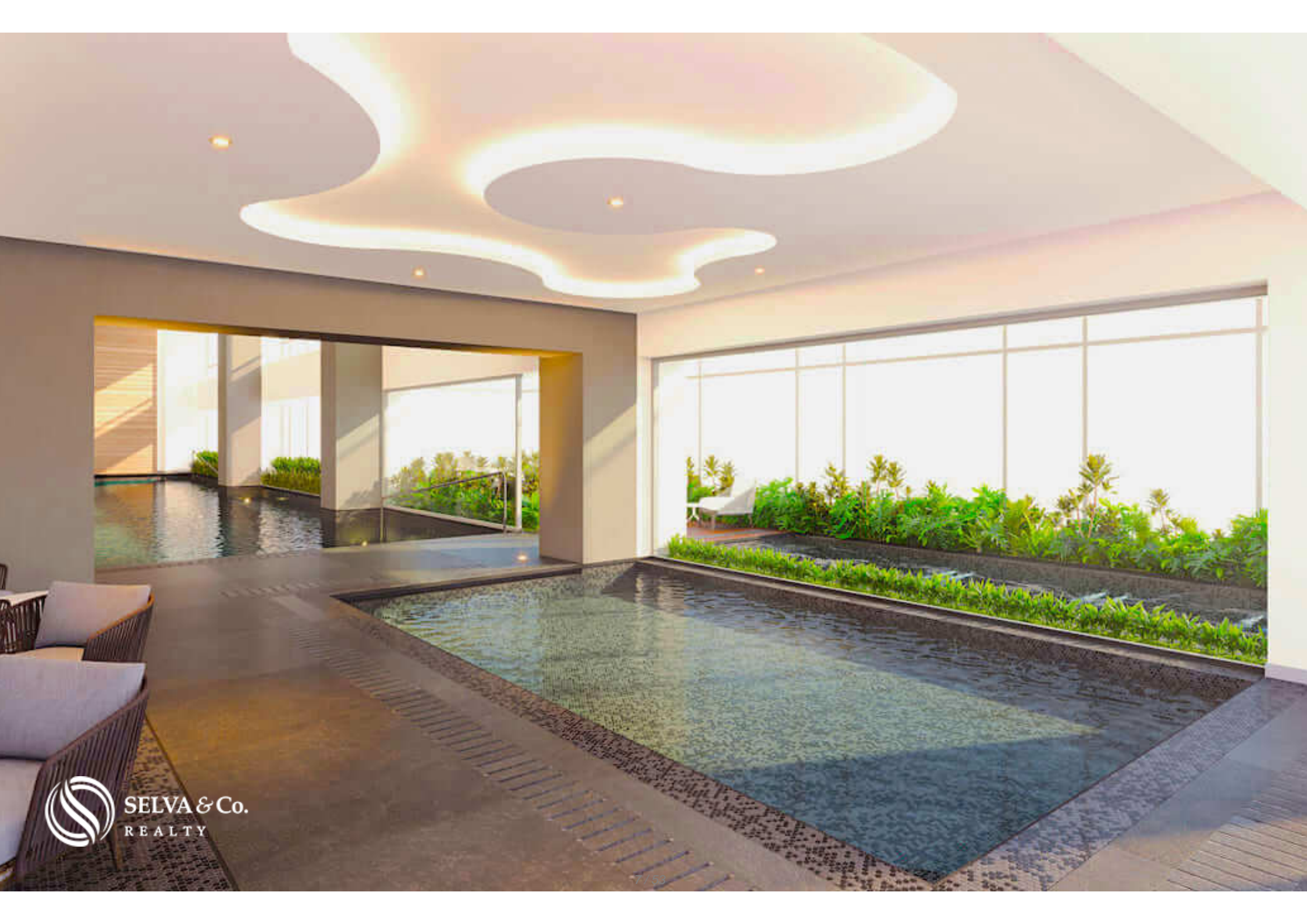
<i>ID: DCM206-2</i>	<i>Location: Mexico City</i>
<i>Zone: Alvaro Obregón</i>	<i>Type: Condos</i>
<i>Bedrooms: 2</i>	<i>Bathrooms: 2.5</i>
<i>Levels: 2</i>	<i>Parking(s): 2</i>
<i>Construction: 111 m2 / 1,194.80 ft</i>	

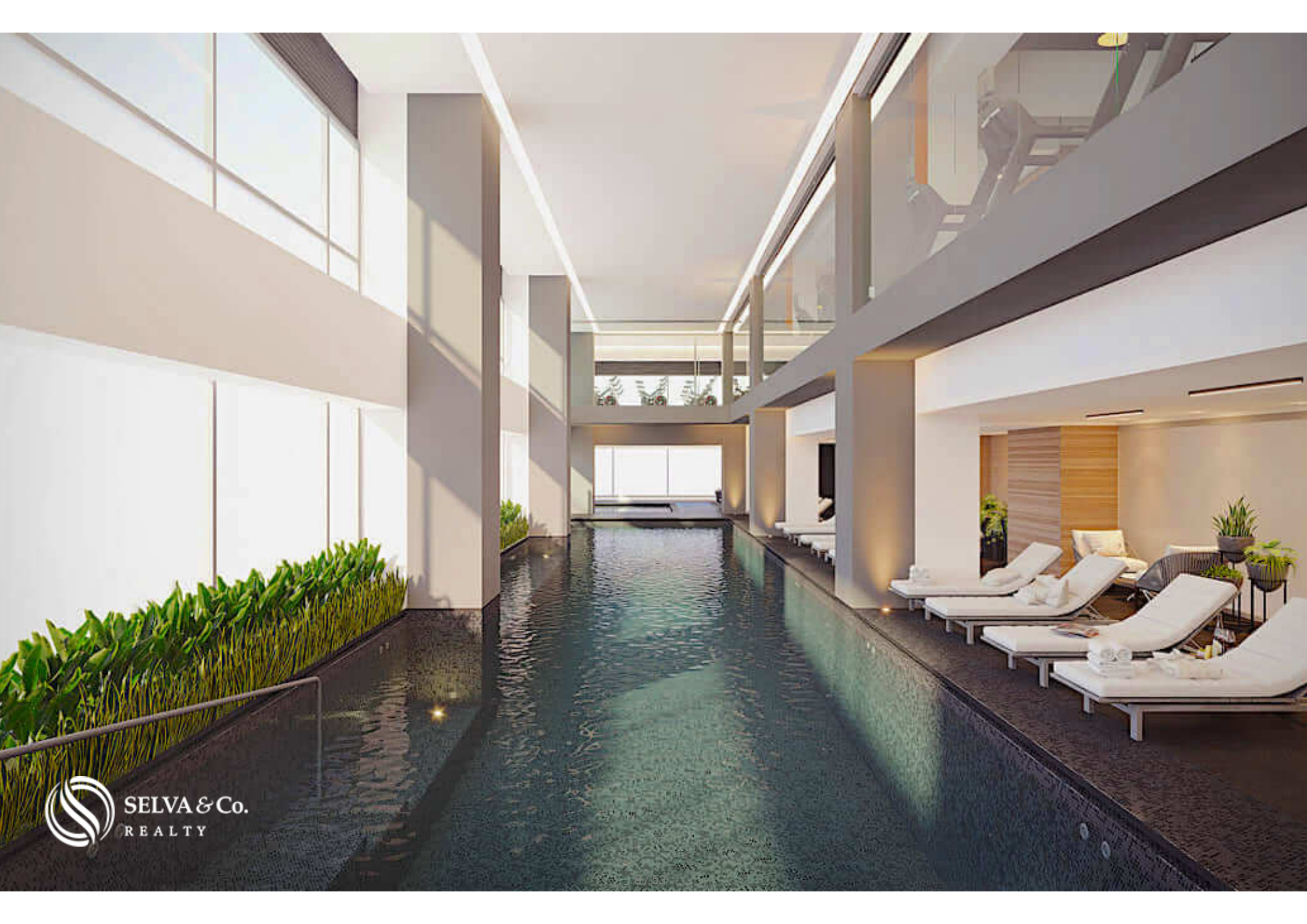


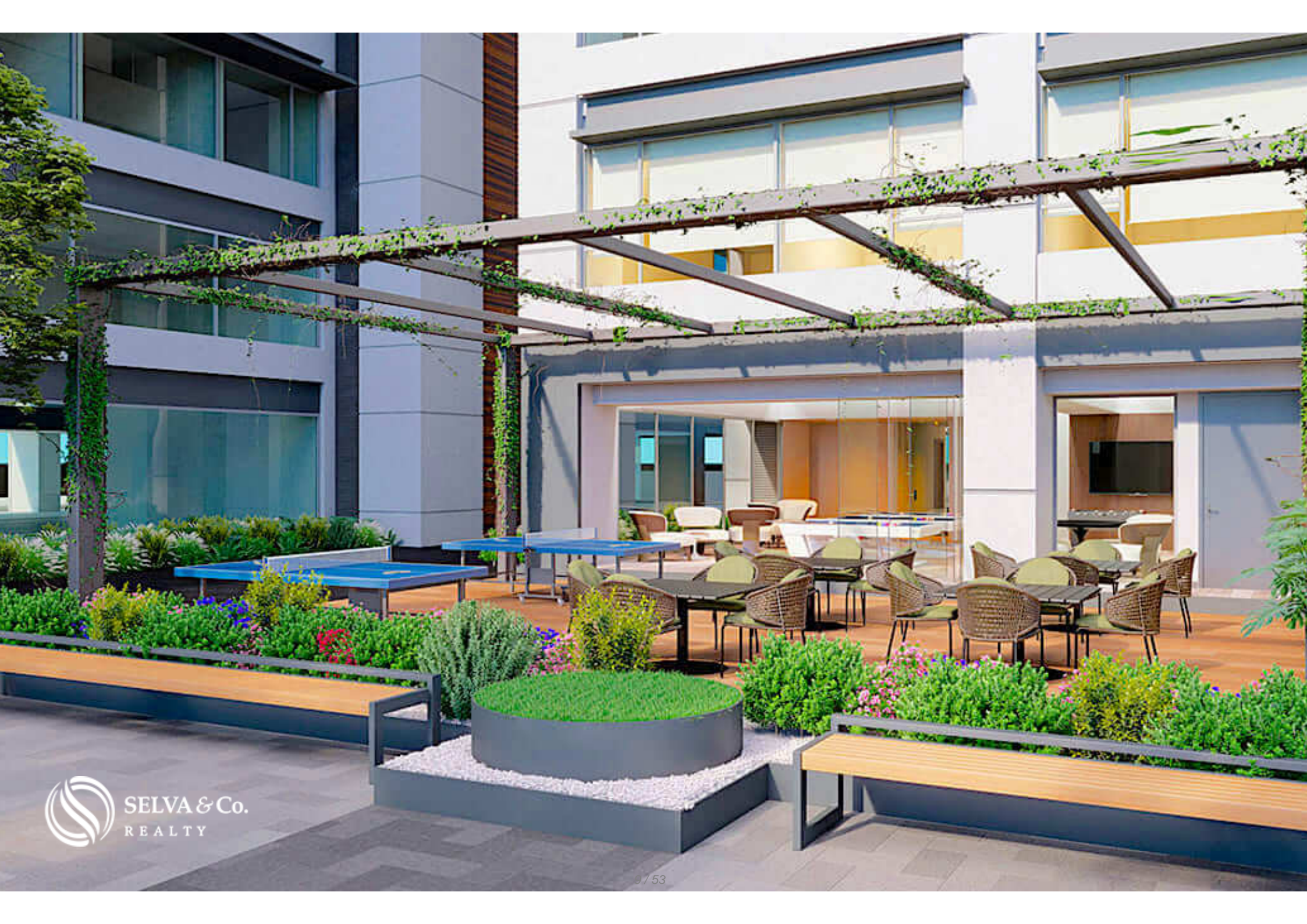






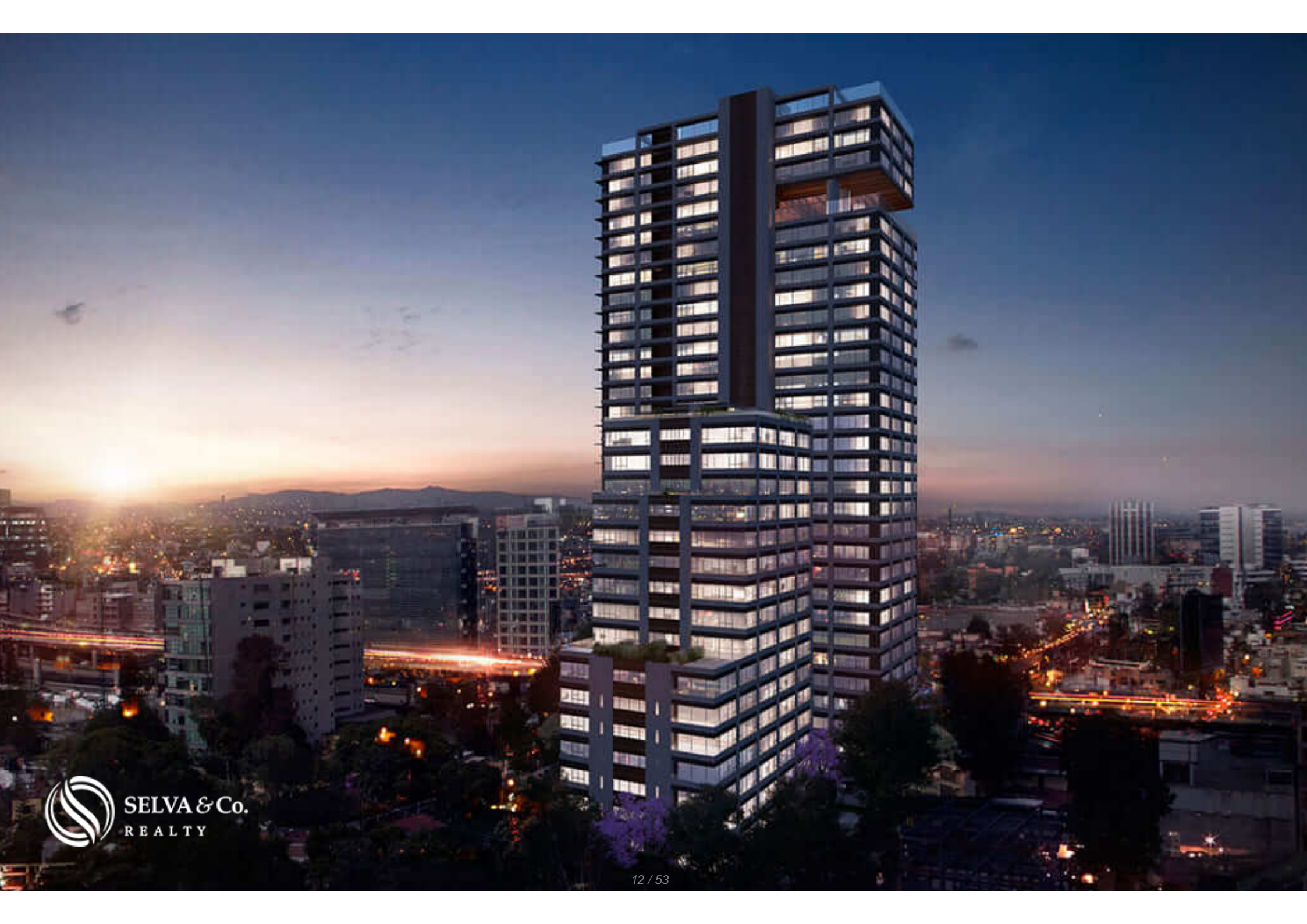














Areas comunes

Common areas



Terraza de doble altura y barra
Lounge en el ultimo piso con vistas panoramicas

Double height terrace with bar
Sky lounge on the top floor with panoramic views

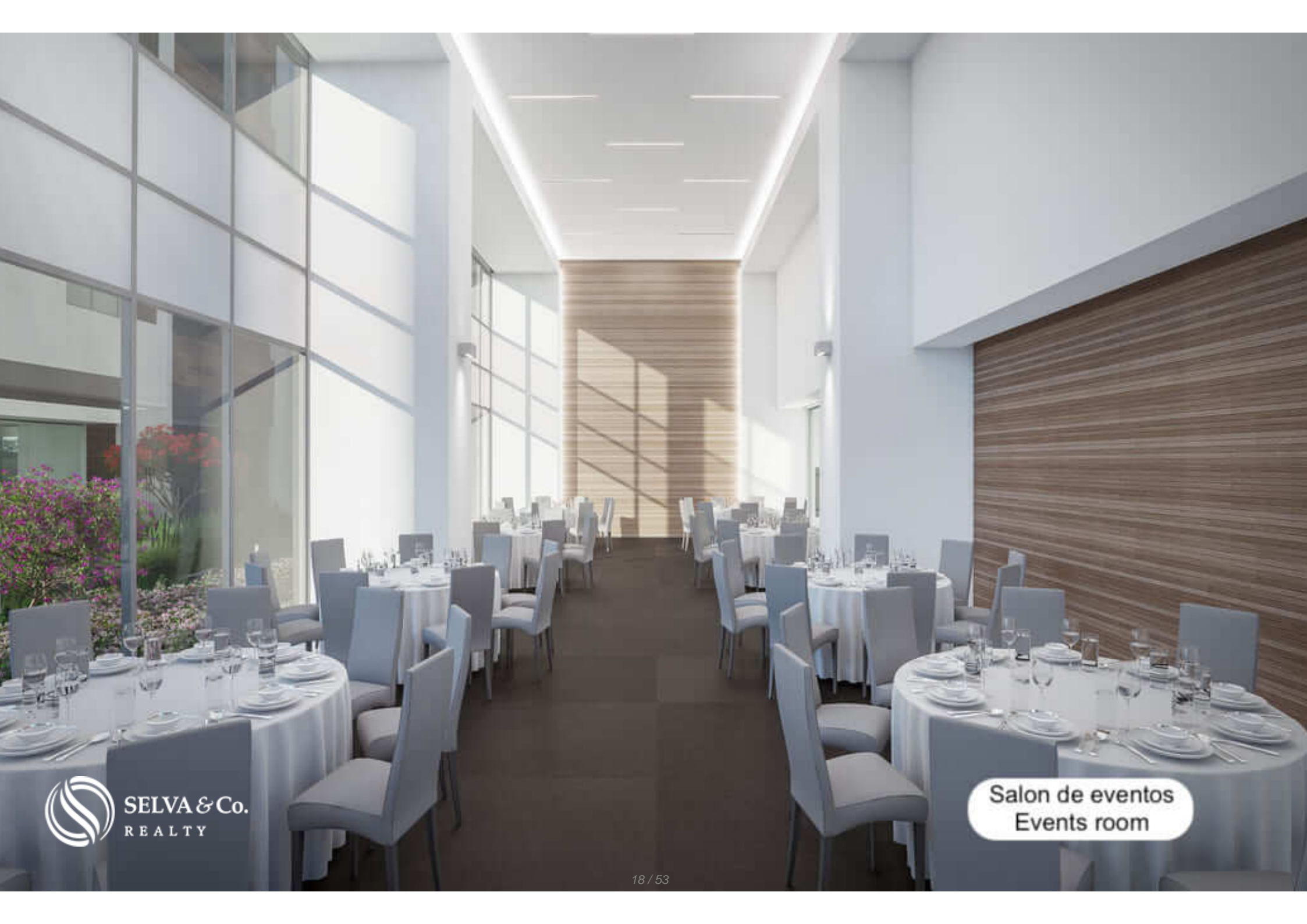




SELVA & Co.
REALTY

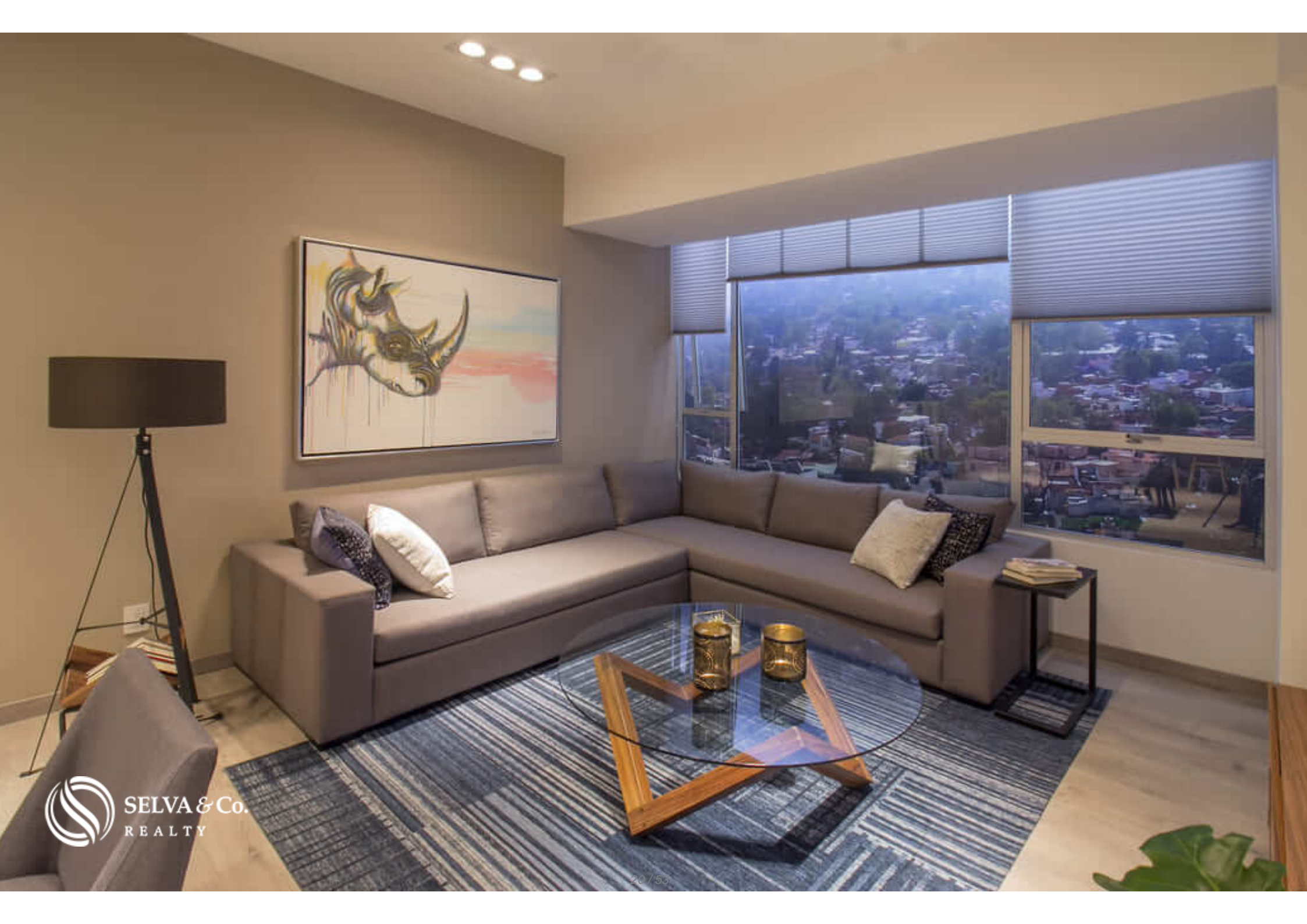
Area de fogata
Fire pit area





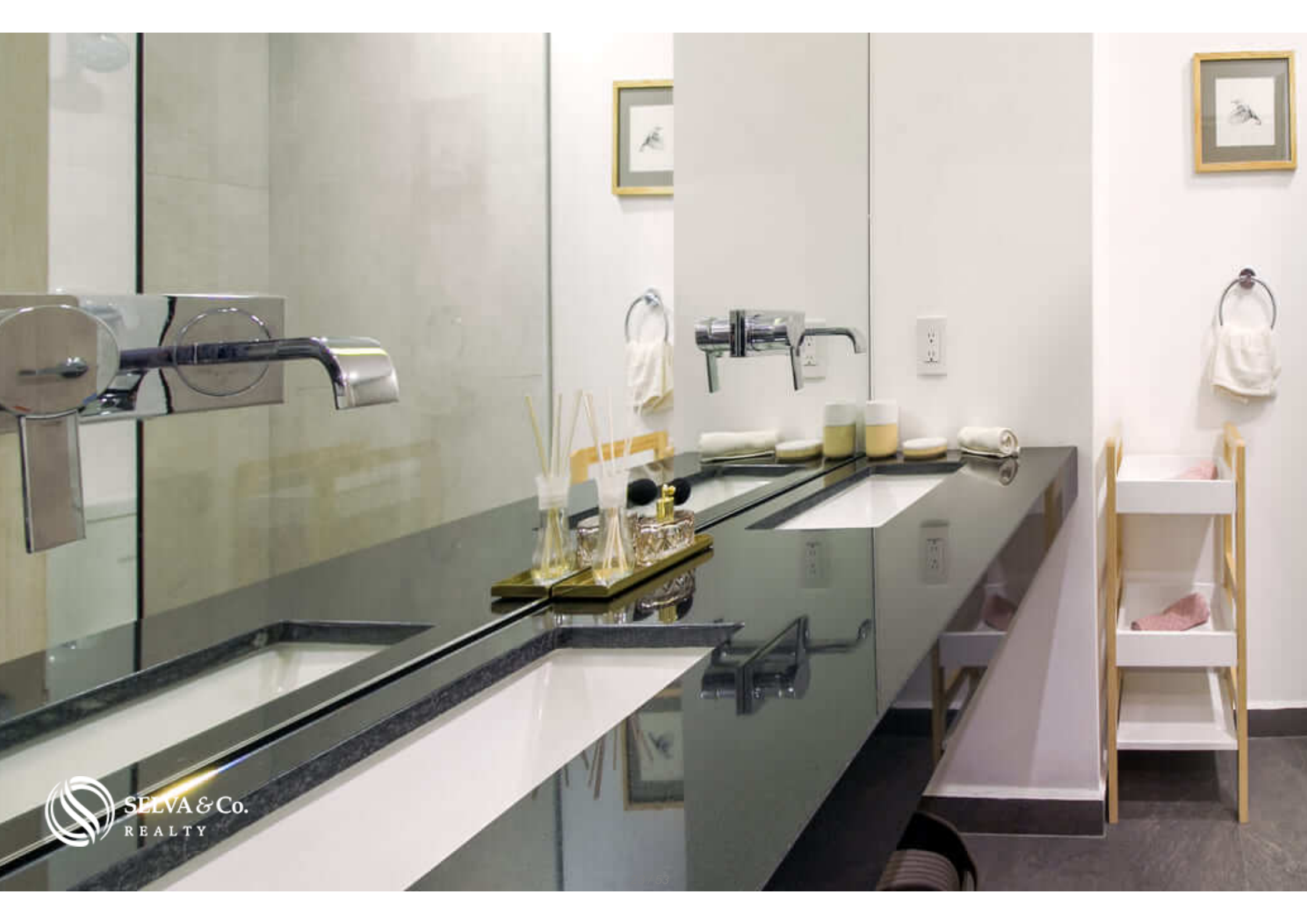


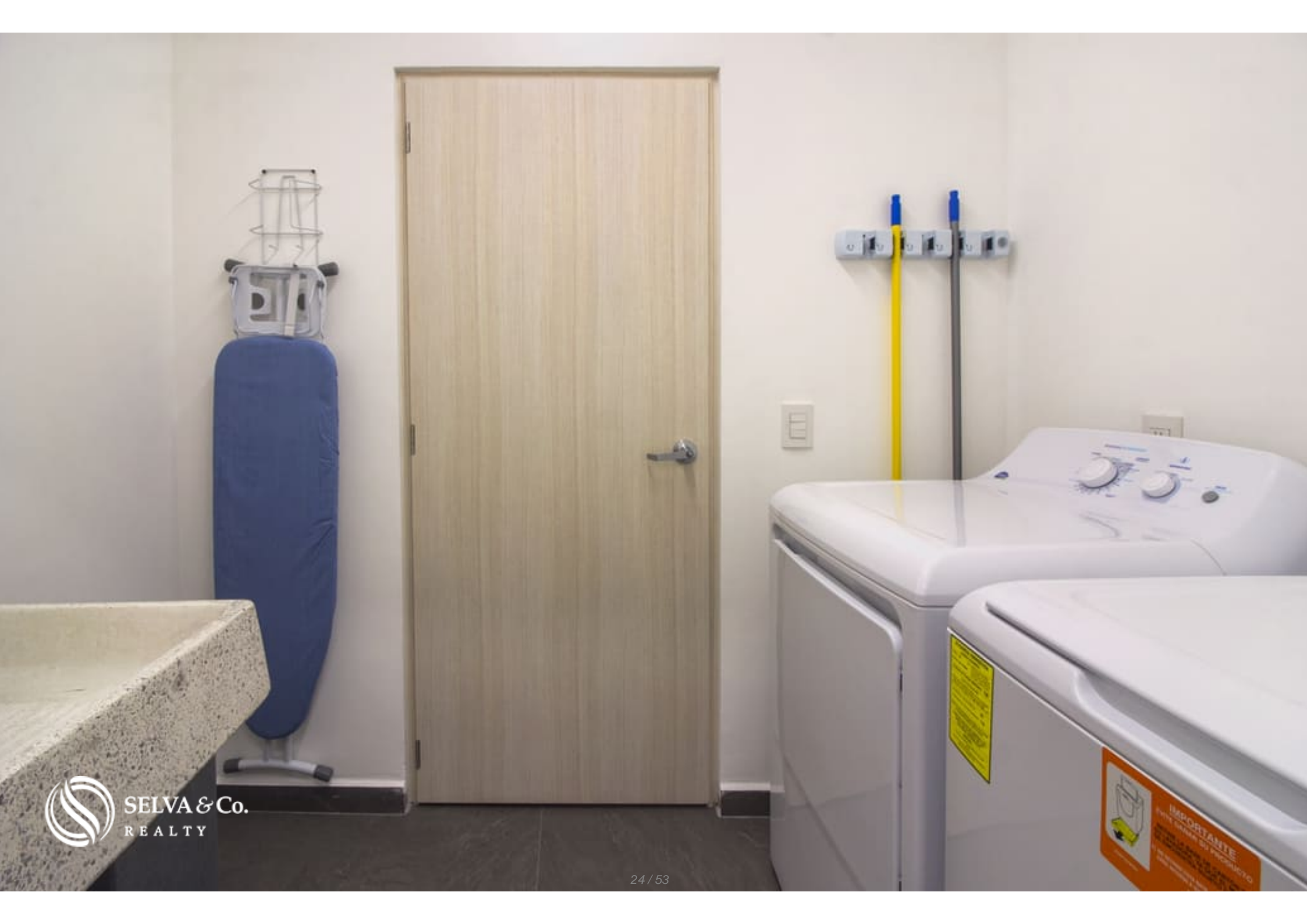
Seguro e iluminado chapoteadero para que los niños se diviertan
Safe and illuminated wading pool for children to have fun







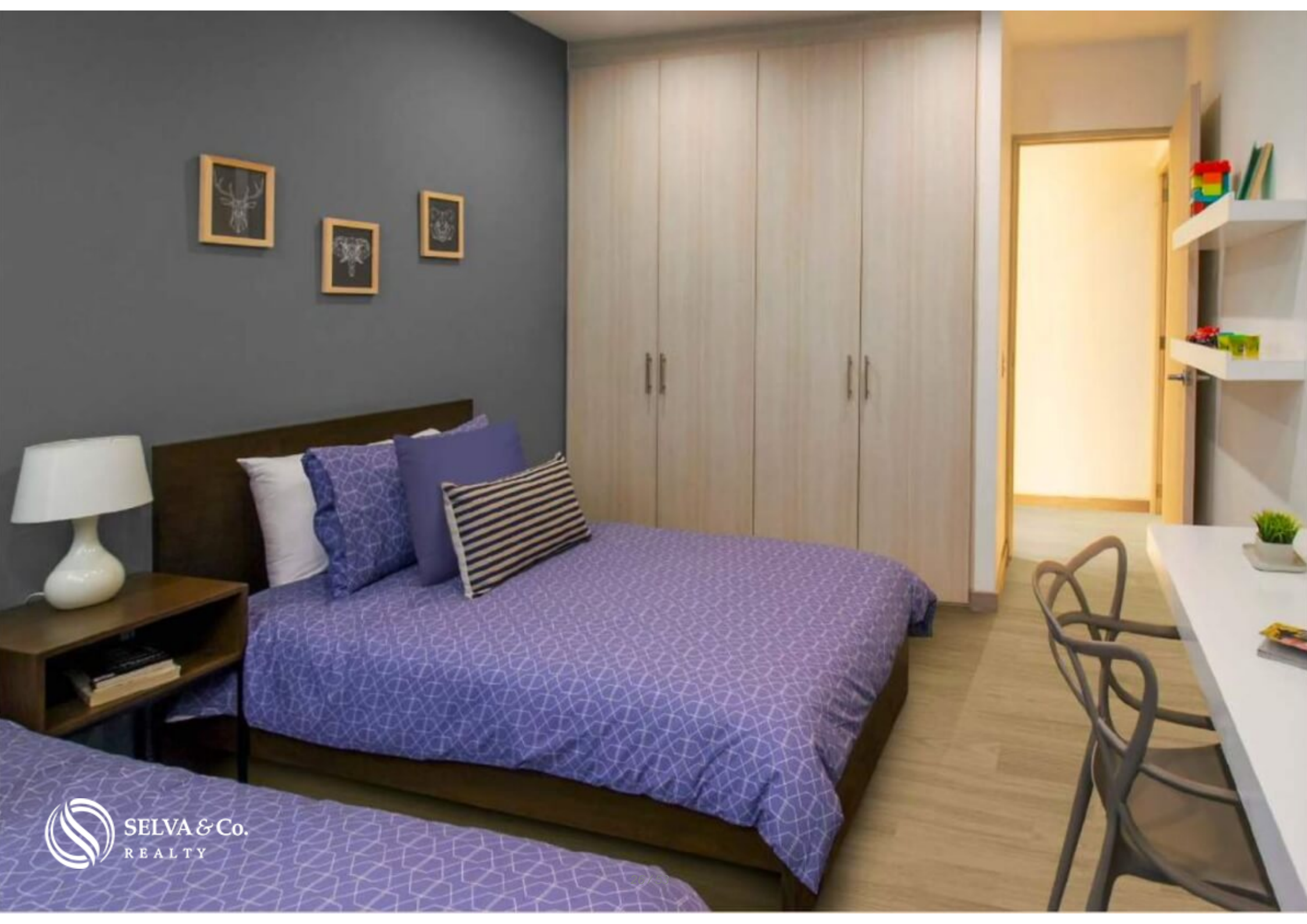


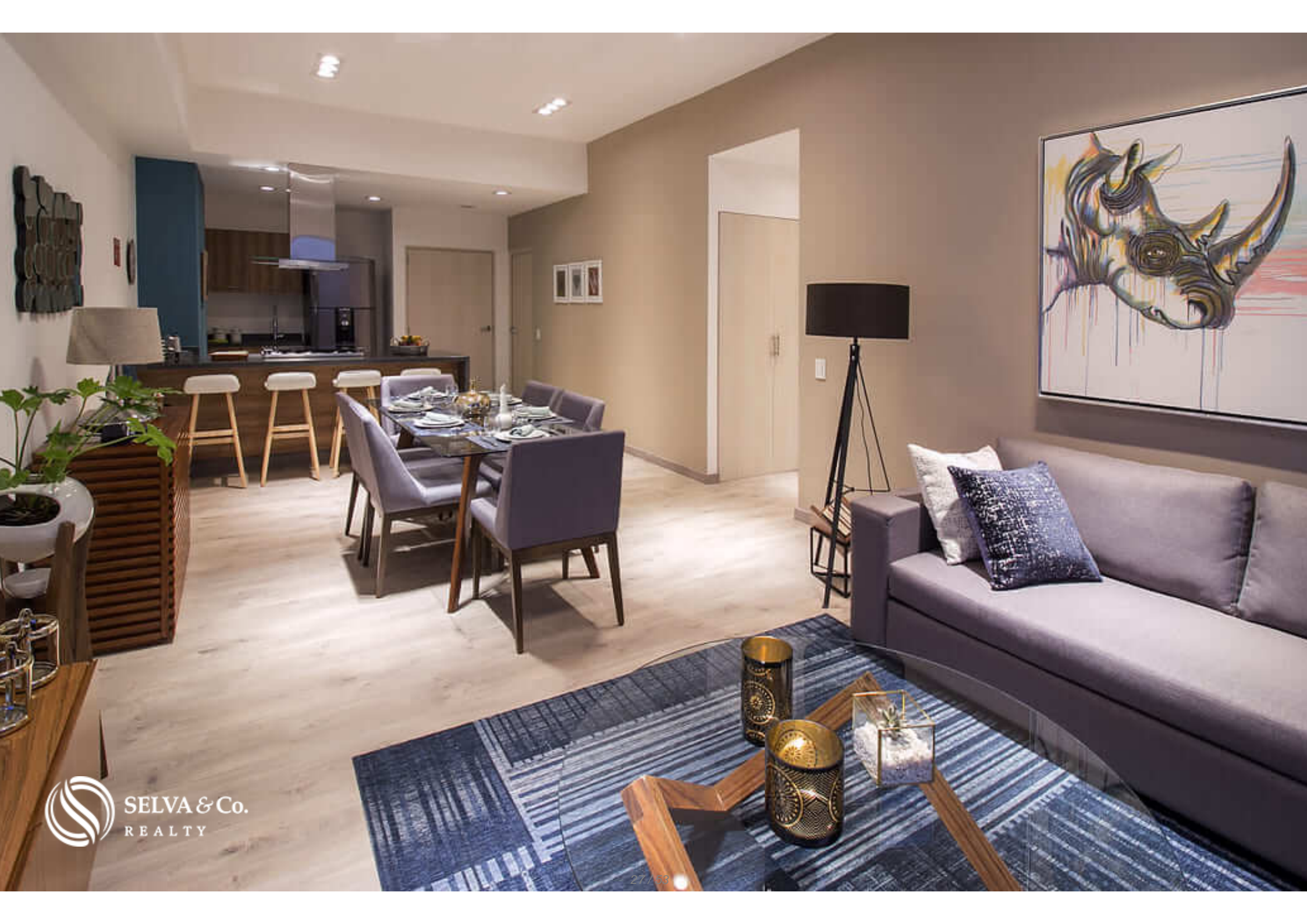


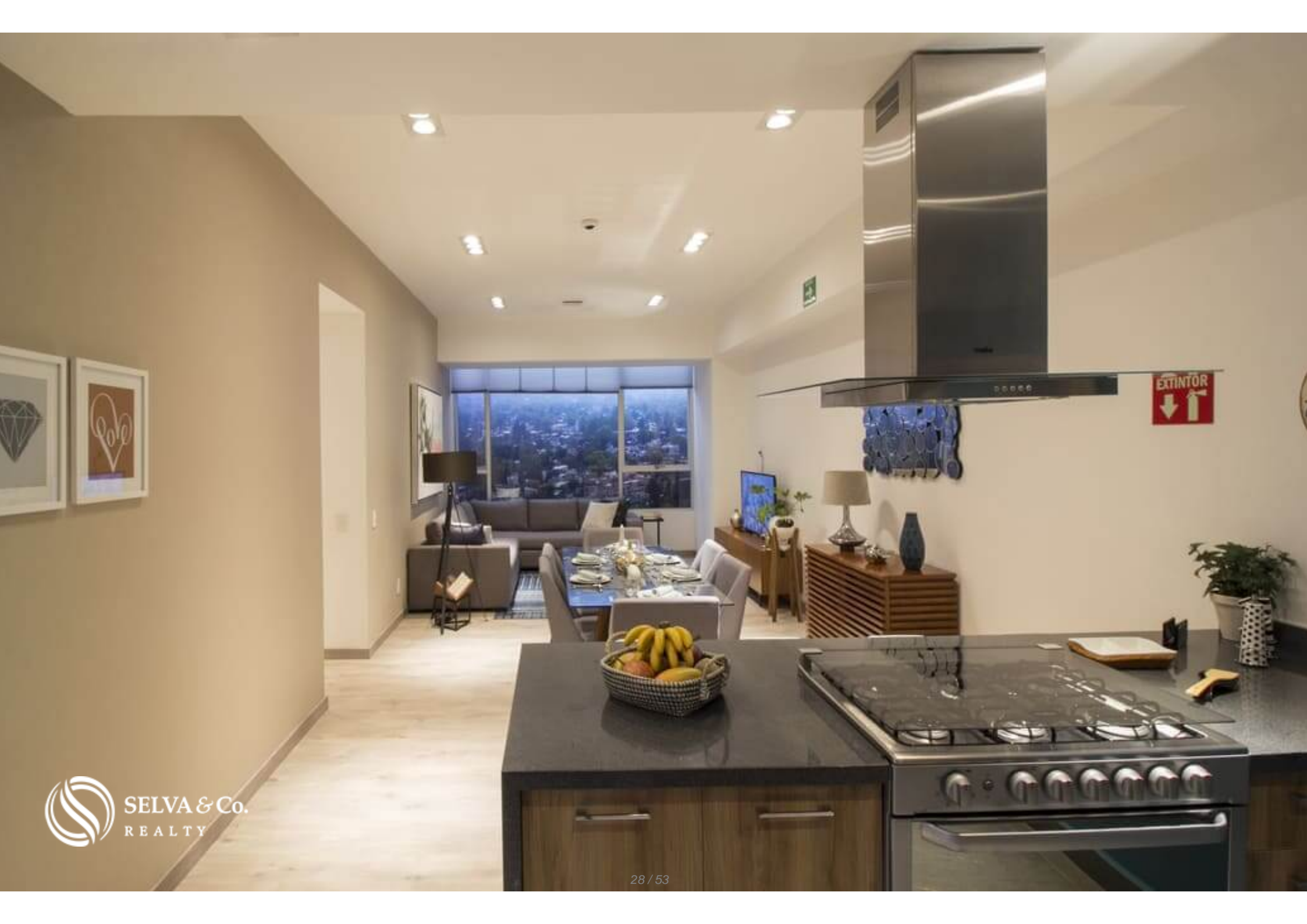
DEPARTAMENTO MUESTRA

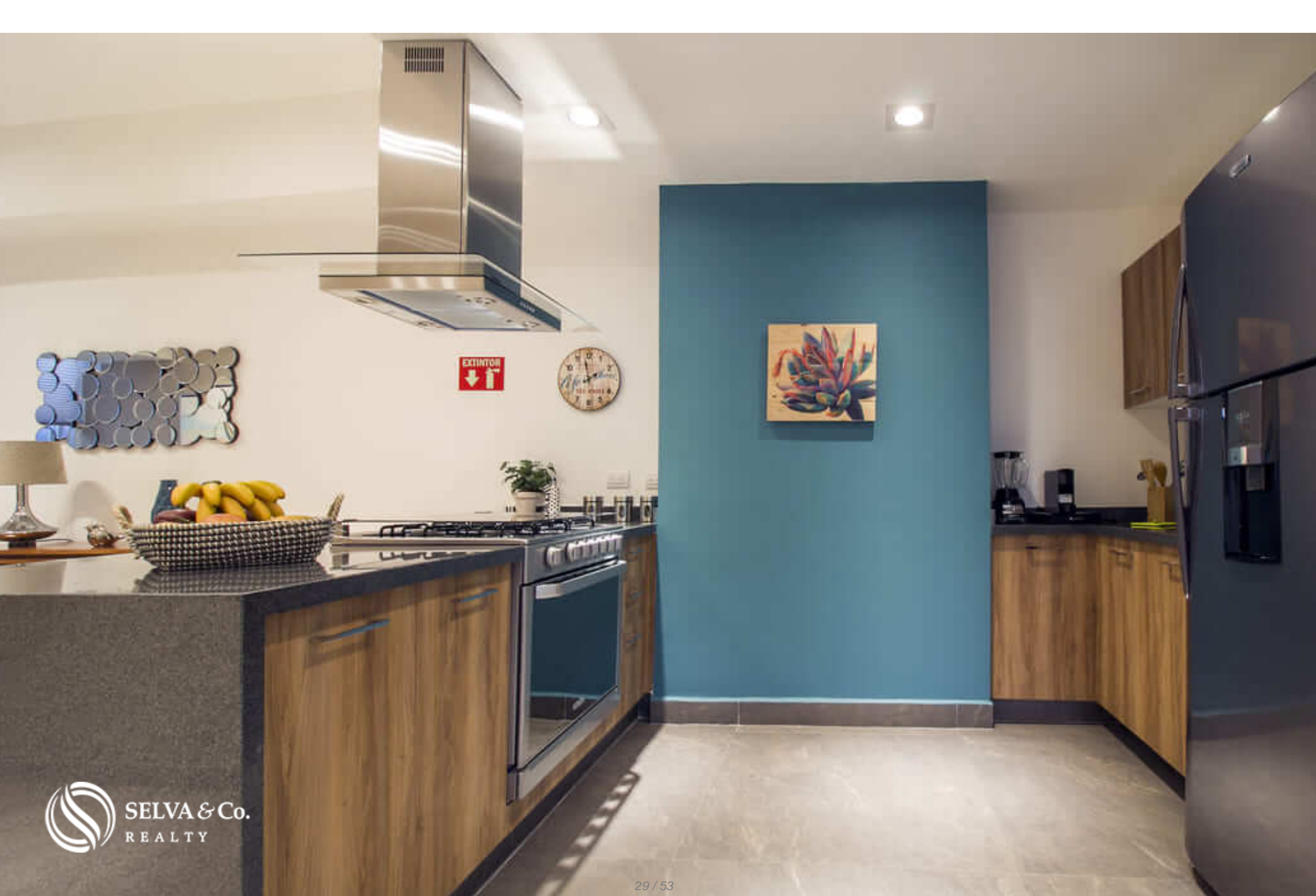


 SELVA & Co.
REALTY









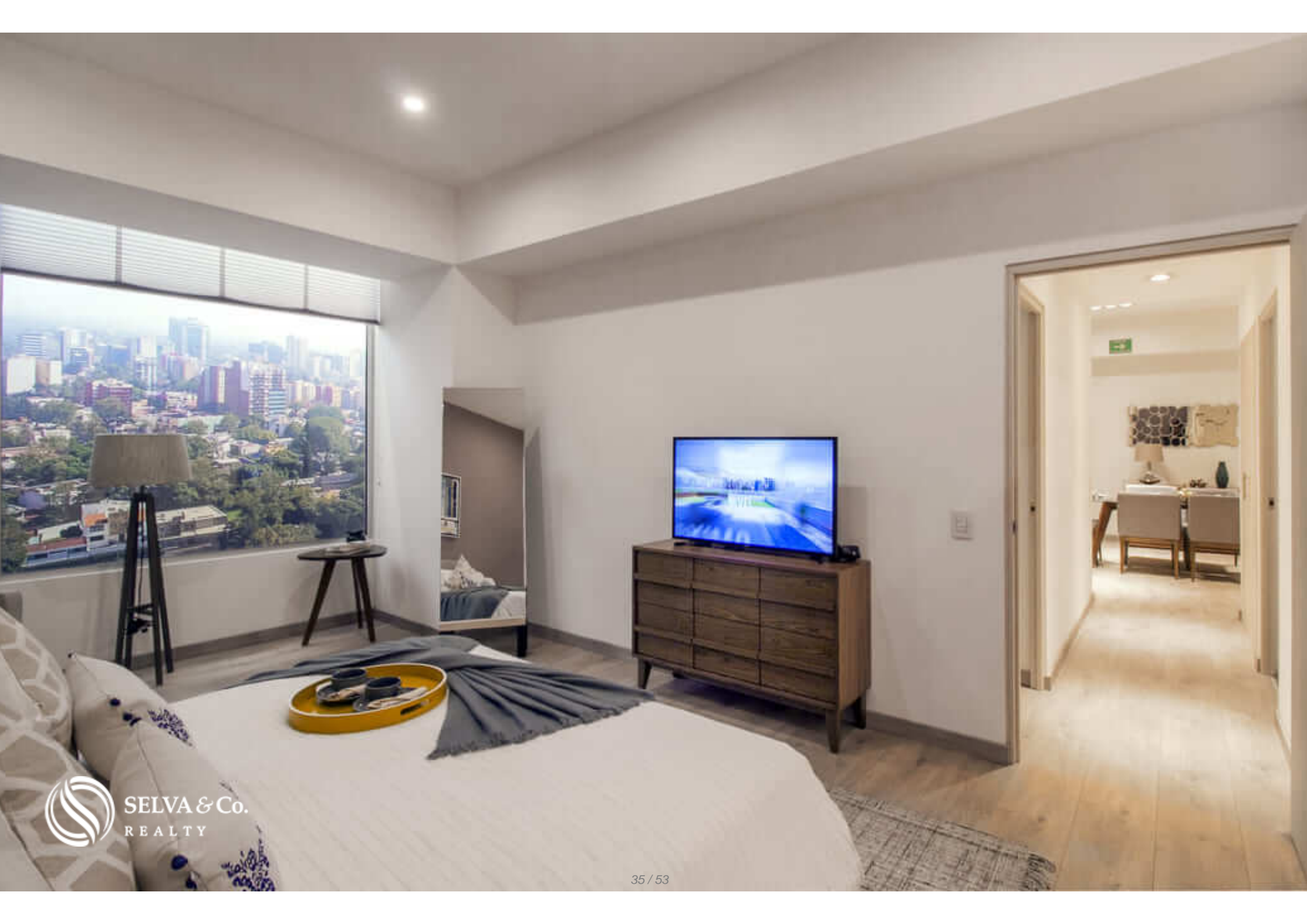












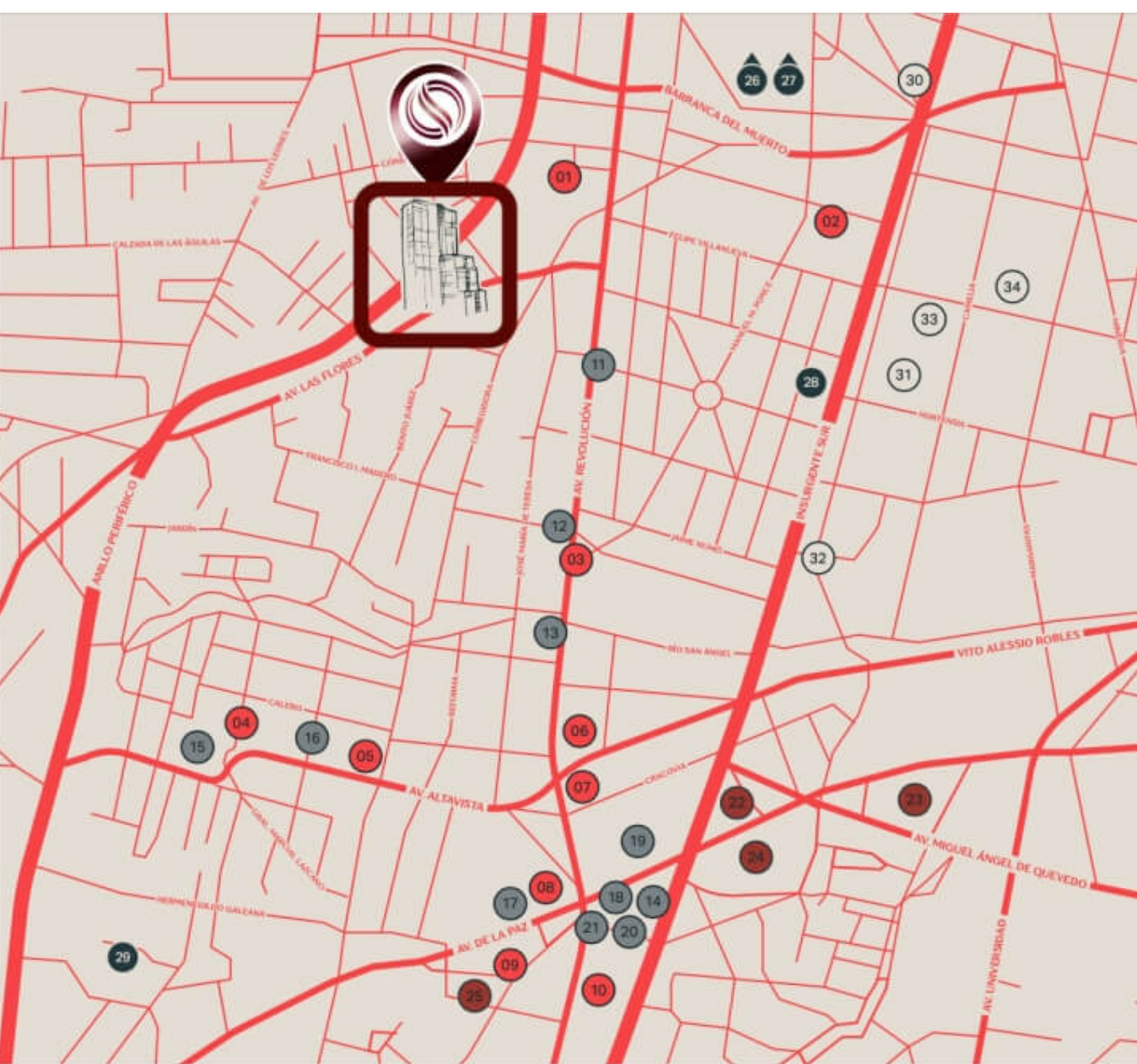


Vista hacia el poniente
West view



Vista hacia el Norte
North view





UNA UBICACIÓN ENVIDIABLE

ENVIABLE LOCATION

CULTURE & ENTERTAINMENT

CULTURA / ENTRETENIMIENTO

- 01 Portal San Ángel
- 02 Autocinema Coyote
- 03 Centro Cultural Helénico
- 04 Museo Casa Estudio Diego Rivera y Frida Kahlo
- 05 Museo de Arte Carrillo Gil
- 06 Pabellón Altavista
- 07 Mercado del Carmen
- 08 Bazar del Sábado
- 09 Museo de El Carmen
- 10 Plaza San Ángel

FRESH AIR

AIRE LIBRE

- 22 Plaza San Luis Potosí
- 23 Parque Tagle
- 24 Jardín de la Bombilla
- 25 Plaza San Jacinto

ESCUELAS Y UNIVERSIDADES

- 26 Universidad Panamericana
- 27 Universidad Simón Bolívar
- 28 Colegio La Salle
- 29 ITAM

GASTRONOMÍA GASTRONIMY

- 11 Vivant
- 12 Casa de Castilla
- 13 Eloise Chic Cuisine
- 14 Puntarena
- 15 San Ángel Inn
- 16 La Buena Fe
- 17 Bistrot 83
- 18 Central de Brazil Churrascaria
- 19 El Cardenal
- 20 Cluny Le Bar
- 21 Carlota

OTROS OTHERS

- 30 Banorte
- 31 DHL
- 32 Banamex
- 33 Clínica Medicci
- 34 Club France

Ubicacion
Location



SAN ANGEL







Description

DCM206-2

Double height apartment, Pet friendly, heated pool, cafeteria, sky lounge, playground for children, pre-construction for sale San Angel Mexico City

More than 1,000 m² of gardens and terraces, as well as incredible amenities for the whole family.

In San Angel area. Located between museums, restaurants and boutiques.

HEATED POOL

Cool off all day in a covered and heated pool. This apartment has a pool with swimming lane, semi-olympic.

TERRACE LOUNGE WITH PANORAMIC VIEW

Common area on the top floor, with a double-height terrace, lounge chairs with panoramic views and an entertainment bar, the ideal place to entertain your guests and spend your free time with an incredible view.

3 METERS HEIGHT

Double height in the main areas, and great distribution that creates functional and dynamic spaces.

BATHROOM WITH DOUBLE SINK

Large bathroom in the main bedroom with double sink, everyone will have their space to brush their teeth or get ready for those special days.

COWORKING AREA

Working from home has never been better, enjoy a quiet space, with internet, ideal for working in a relaxed environment, away from the distractions of home, the best place to do an office at home.

KITCHEN

Prepare the most delicious recipes in this built in kitchen that would be the envy of any cook, with stainless steel appliances, enjoy its open design that allows you to

spend time with your loved ones while they prepare their favorite dishes.

KITCHEN EQUIPMENT

6-burner stove, gas oven, stainless steel hood.

HIGHLIGHTS OF THE APARTMENT

Panoramic views of the city.

Bright apartment with floor to ceiling windows that allow each of the most important spaces to have an entrance of natural light.

Master bedroom with en-suite bathroom, walk-in closet, ample space.

2 parking spaces (some residences have 3 parking spaces, limited availability)

AMENITIES AND SERVICES

Heated indoor pool

Double height sky lounge.

Fire pit area

Business Center - Coworking

Children's playground.

More than 1,000 m² of gardens and terraces

Pet area

Café.

Area for teens.

LIVE IN CALM

Your security is the most important thing, that's why this condo has a 24/7 surveillance service and a sophisticated CCTV monitoring system.

LOCATION

This development is located south of the city, in San Angel, one of the most vibrant areas of the city.

With a cultural environment within reach: the Diego Rivera and Frida Kahlo House-Study Museum, the colonial mansions, picturesque places, exclusive restaurants and traditional festivals, which make this area a place with a wealth of unique values.

37 minutes to CDMX International Airport

INVESTMENT IN PRE-CONSTRUCTION

Condo in pre-sale.

If you want more information about the apartment or learn more about the real estate market in the San Angel area, contact us, it will be a pleasure to advise you on your new investment in Mexico City.

Schedule your appointment to visit the area or call us to answer your questions by clicking on the contact link.

Invest safely, call us to receive a free advice.

#DCM206 #MexicoCityBySelvacorealty #SanAngellistings
#MexicoCitylistings #selvacorealty #selvacorealtyMexicoCity
#SanAngelRealEstate #condoforsaleMexicoCity #liveinMexicoCity
#liveMexicoCity #MexicoCityrealestate #realestateMexicoCity
#condoforsaleMexicoCity #PetFriendlyCondosforsaleMexicoCity
#MexicoCity #SAnAngelMexicoCity #condoforsaleMexicoCity
#MexicoCityproperties #presalecondosMexicoCity
#luxuryrealestateMexicoCity #preconstructioncondosMexicoCity
#retireinMexicoCity #secondhomeMexicoCity #vacationhouseMexicoCity
#luxuryrealestatemexico #hotelsforsalemexico
#boutiquehotelsforsale

Property details

- Bathroom with double sink
- Garden
- Panoramic View
- Terrace
- Fully equipped kitchen
- Integral Kitchen
- Pet friendly
- Walking closet

Amenities

- Playground for children
- Swimming Pool
- Security 24/7

Location





SELVA & Co.
REALTY

MX 984 803 2058 / US 805 308 2900

www.selvacorealty.com