



**Swim up condo, direct access to the pool from your terrace, gym, restaurant, outdoor yoga area, bicycles, 5 minutes from the beach**

<i>ID: MLS-DTU293</i>	<i>Location: Tulum</i>
<i>Zone: Aldea Zama</i>	<i>Type: Condos</i>
<i>Bedrooms: 2</i>	<i>Bathrooms: 2</i>
<i>Construction: 74 m2 / 796.54 ft</i>	









Cocina  
con cubierta de granito  
y acabados en madera

Kitchen with  
granite countertop  
and wood finishes



 SELVA & Co.  
REALTY



Baños  
con cubierta de mármol

Bathrooms  
with marble finishes



Condo con  
alberca privada

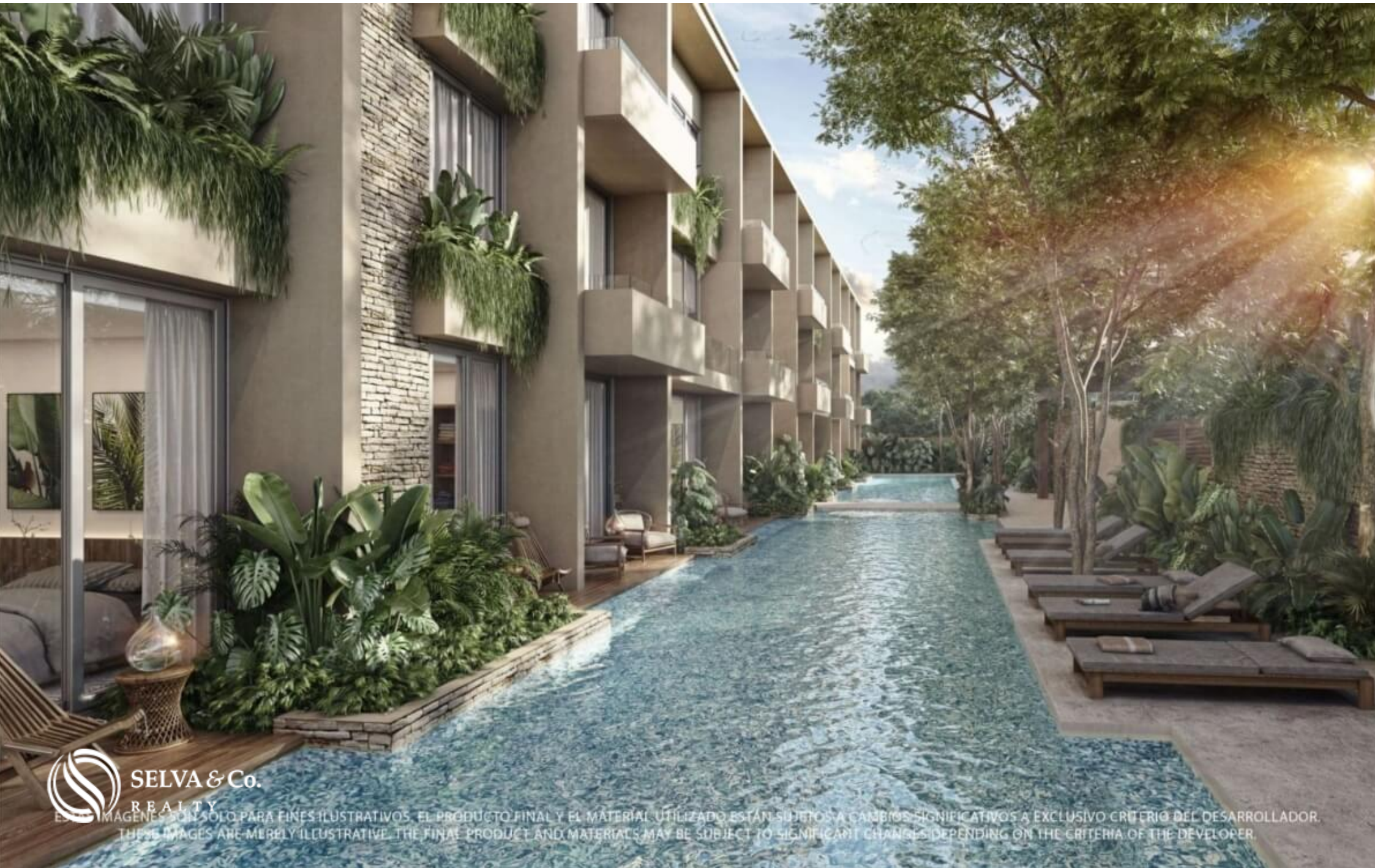
Private pool  
condo



ESTAS IMÁGENES SON SOLO PARA FINES ILUSTRATIVOS. EL PRODUCTO FINAL Y EL MATERIAL UTILIZADO ESTÁN SUJETOS A CAMBIOS SIGNIFICATIVOS A EXCLUSIVO CRITERIO DEL DESARROLLADOR.  
THESE IMAGES ARE MERELY ILLUSTRATIVE. THE FINAL PRODUCT AND MATERIALS MAY BE SUBJECT TO SIGNIFICANT CHANGES DEPENDING ON THE CRITERIA OF THE DEVELOPER.







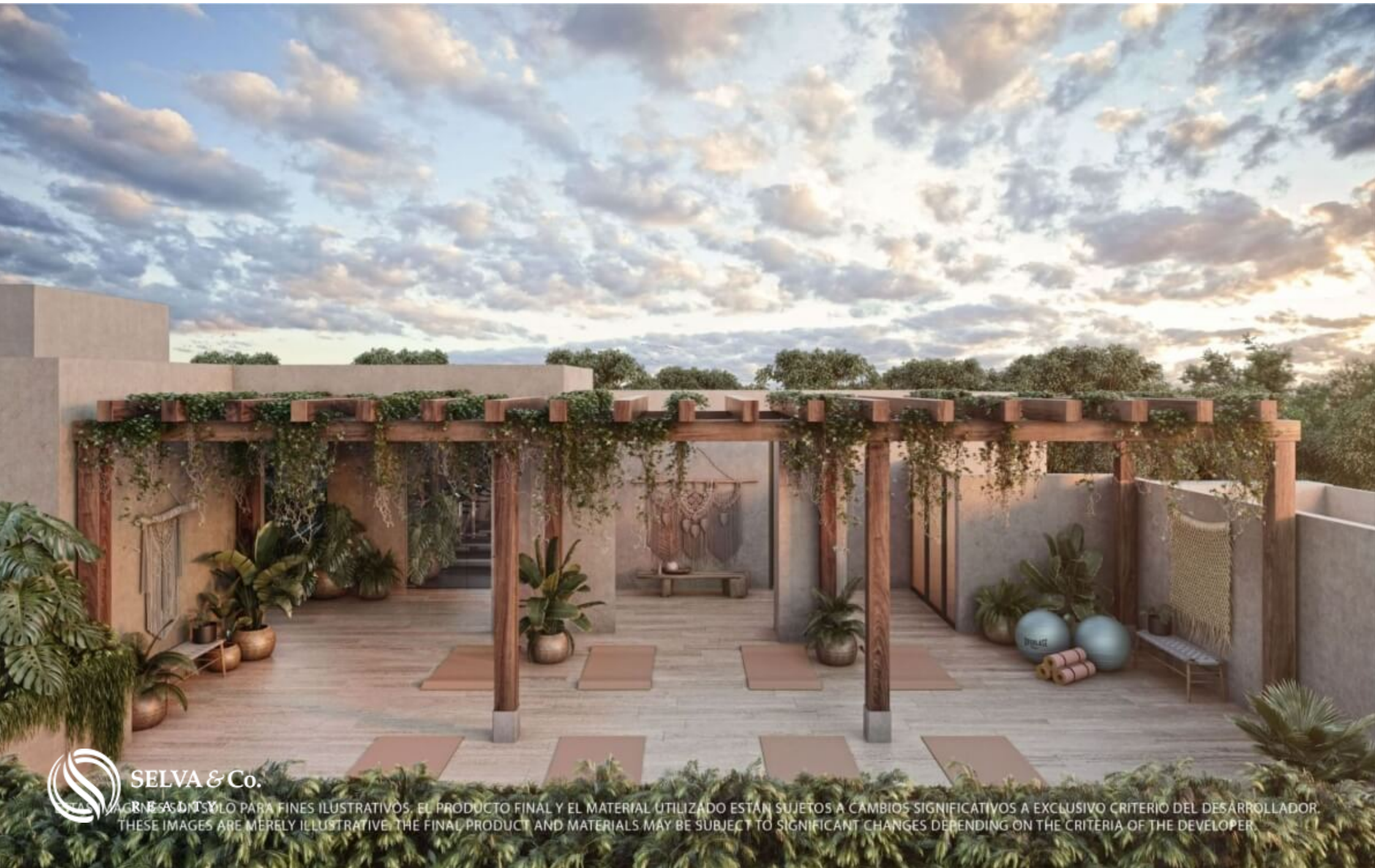
 SELVA & Co.  
REALTY

ESTAS IMÁGENES SON SOLO PARA FINES ILUSTRATIVAS. EL PRODUCTO FINAL Y EL MATERIAL UTILIZADO ESTÁN SUJETOS A CAMBIOS SIGNIFICATIVOS A EXCLUSIVO CRITERIO DEL DESARROLLADOR.  
THESE IMAGES ARE MERELY ILLUSTRATIVE. THE FINAL PRODUCT AND MATERIALS MAY BE SUBJECT TO SIGNIFICANT CHANGES DEPENDING ON THE CRITERIA OF THE DEVELOPER.



 SELVA & Co.  
REALTY

IMAGENES SON SOLO PARA FINES ILUSTRATIVOS, EL PRODUCTO FINAL Y EL MATERIAL UTILIZADO ESTÁN SUJETOS A CAMBIOS SIGNIFICATIVOS A EXCLUSIVO CRITERIO DEL DESARROLLADOR.  
THESE IMAGES ARE MERELY ILLUSTRATIVE. THE FINAL PRODUCT AND MATERIALS MAY BE SUBJECT TO SIGNIFICANT CHANGES DEPENDING ON THE CRITERIA OF THE DEVELOPER.



 SELVA & Co.  
REAL ESTATE

ESTAS IMAGENES SON SOLO PARA FINES ILUSTRATIVAS. EL PRODUCTO FINAL Y EL MATERIAL UTILIZADO ESTÁN SUJETOS A CAMBIOS SIGNIFICATIVOS A EXCLUSIVO CRITERIO DEL DESARROLLADOR.  
THESE IMAGES ARE MERELY ILLUSTRATIVE. THE FINAL PRODUCT AND MATERIALS MAY BE SUBJECT TO SIGNIFICANT CHANGES DEPENDING ON THE CRITERIA OF THE DEVELOPER.



 **SELVA & Co.**  
REALTY

ESTAS IMÁGENES SON SOLO PARA FINES ILUSTRATIVOS. EL PRODUCTO FINAL Y EL MATERIAL UTILIZADO ESTÁN SUJETOS A CAMBIOS SIGNIFICATIVOS A EXCLUSIVO CRITERIO DEL DESARROLLADOR.  
THESE IMAGES ARE MERELY ILLUSTRATIVE. THE FINAL PRODUCT AND MATERIALS MAY BE SUBJECT TO SIGNIFICANT CHANGES DEPENDING ON THE CRITERIA OF THE DEVELOPER.



**SELVA & Co.**

ESTAS IMAGENES SON SOLO PARA FINES ILUSTRATIVAS. EL PRODUCTO FINAL Y EL MATERIAL UTILIZADO ESTAN SUJETOS A CAMBIOS SIGNIFICATIVOS A EXCLUSIVO CRITERIO DEL DESARROLLADOR.  
THESE IMAGES ARE ONLY ILLUSTRATIVE. THE FINAL PRODUCT AND MATERIALS ARE SUBJECT TO SIGNIFICANT CHANGES DEPENDING ON THE CRITERIA OF THE DEVELOPER.



 **SELVA & Co.**  
REALTY

ESTAS IMÁGENES SON SOLO PARA FINES ILUSTRATIVOS. EL PRODUCTO FINAL Y EL MATERIAL UTILIZADO ESTÁN SUJETOS A CAMBIOS SIGNIFICATIVOS A EXCLUSIVO CRITERIO DEL DESARROLLADOR.  
THESE IMAGES ARE MERELY ILLUSTRATIVE. THE FINAL PRODUCT AND MATERIALS MAY BE SUBJECT TO SIGNIFICANT CHANGES DEPENDING ON THE CRITERIA OF THE DEVELOPER.



 SELVA & Co.  
REALTY

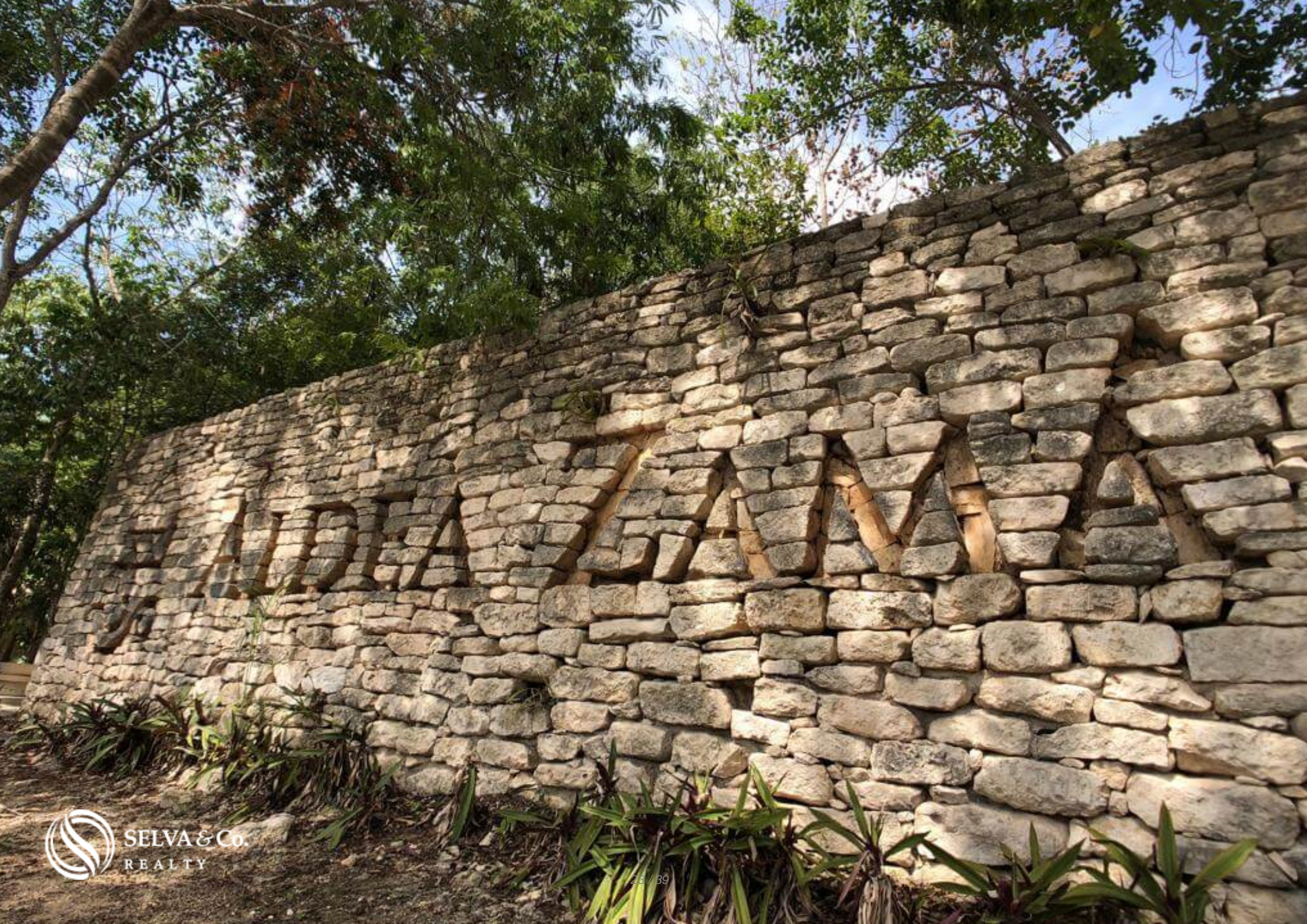


 SELVA & Co.  
REALTY

ESTAS IMÁGENES SON SOLO PARA FINES ILUSTRATIVAS. EL PRODUCTO FINAL Y EL MATERIAL UTILIZADO ESTÁN SUJETOS A CAMBIOS SIGNIFICATIVOS A EXCLUSIVO CRITERIO DEL DESARROLLADOR.  
THESE IMAGES ARE MERELY ILLUSTRATIVE. THE FINAL PRODUCT AND MATERIALS MAY BE SUBJECT TO SIGNIFICANT CHANGES DEPENDING ON THE CRITERIA OF THE DEVELOPER.

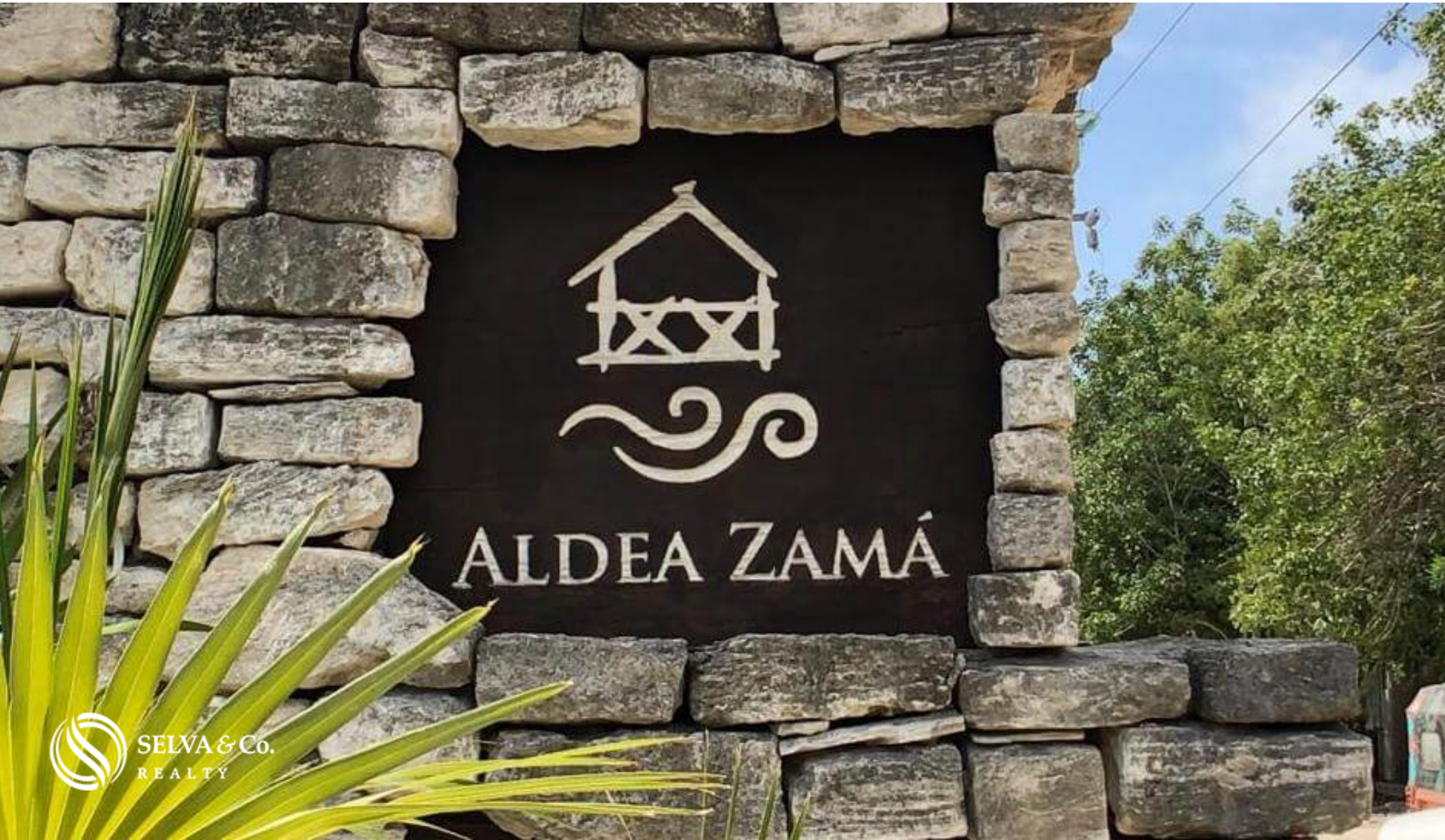








SELVA & Co.  
REALTY



ALDEA ZAMÁ

 SELVA & Co.  
REALTY







## Description

MLS-DTU293

Swim up condo, direct access to the pool from your terrace, gym, restaurant, outdoor yoga area, bicycles, 5 minutes from the beach in pre-construction for sale Aldea Zama, Tulum

Pre-construction condo, with hotel amenities and services, invests in the best area of Tulum, Aldea Zama. and live surrounded by restaurants, original design boutiques and luxury developments.

Community made of 36 departments. just 5 minutes from the beach.

## INDOOR-OUTDOOR LIFESTYLE

Thanks to its multiple terraces you can enjoy the outside all day and decide between sunbathing while you cool off in the pool or enjoying the cool breeze in its shaded areas.

## KITCHEN

Prepare the most delicious recipes in this kitchen that would be the envy of any cook, with custom-made wood cabinets, granite countertop, spend time with your loved ones while everyone prepares their favorite food.

Furniture and kitchen shelves made of white cedar.

## LOCK OFF

These condo have a lock off system, which allows you to rent one room and use the other without losing privacy or rent the two rooms separately. Ideal for vacation rentals.

## HIGHLIGHTS OF THE CONDO

Bright condo with large windows that allow each of the most important spaces to have natural light, even in the bathrooms.

Master bedroom with en suite bathroom, walk-in closet, ample space.

## LOCATION, ALDEA ZAMA

Condo located in Aldea Zama, the first planned community of Tulum, with underground services, green areas and bicycle path to the hotel zone and beach area. Only 10 minutes by bicycle, you will not need a car. In addition to having a commercial area with restaurants and coffee shops.

5 minutes from the beach and hotel zone of Tulum, where you will find the best beach clubs in Mexico.

## EQUIPMENT INCLUDED

- Electric grill.
- Refrigerator.
- Ceiling fans.
- Air conditioning.

- Electric heater.

## FINISHES

- Marble floors
- Bathroom with marble top.
- Granite kitchen countertop.

## AMENITIES AND SERVICES

- Outdoor yoga area.
- Gym with green views.
- Restaurant.
- Pools.

- Lounge area.
- Reception-lobby.
- Private residential with controlled access.
- Bikes.
- Elevator.
- 24 hour security.

## RENT YOUR PROPERTY

This development allows vacation rentals.

Due to its location, it can be rented for vacation or long term.

This development works with a management agency, rent your property while you are not using it, they are in charge of maintaining and renting it for you. You will not

lift a finger.

## INVESTMENT IN PRE-CONSTRUCTION

Condo in pre-sale. Delivery date: March 2023.

## RENOWN DEVELOPER

Developer with several projects in Tulum, excellent track record of on-time deliveries and quality finishes. Widely recommended for pre-construction investment.

If you want to visit this condo and know more about the Aldea Zama area, contact

us, it will be a pleasure to advise you on your new investment in Tulum.

Click on the contact button for more information or to schedule an appointment.

#MLSDTU293      #aldeazamalistings      #selvacorealty      #selvacorealtyTulum  
#investintulum      #condoforsaletulum      #lifestyletulum      #liveintulum      #livetulum  
#investintulum      #tulumvibe      #tulumhome      #tulumrealestate      #realestatetulum  
#condoforsaletulum      #tulum      #condoforsaleTulum      #Tulumproperties  
#presalecondosTulum      #preconstructioncondosTulum      #retireinTulum  
#secondhomeTulum      #vacationhouseTulum      #luxuryrealestatemexico  
#luxuryrealestateTulum

## Property details

- Air conditioning
- Integral Kitchen
- Terrace
- Garden
- Lock off
- Walking closet

## Amenities

- Controlled access
- Gym
- Restaurant
- Swimming Pool
- Elevator
- Lobby
- Security 24/7
- Yoga area

# Location





**SELVA & Co.**  
REALTY

MX 984 803 2058 / US 805 308 2900

[www.selvacorealty.com](http://www.selvacorealty.com)