



**SELVA & Co.**  
REALTY

[www.selvacorealty.com](http://www.selvacorealty.com)



**Condo with direct access to the pool from your terrace (swim up), common areas surrounded by nature, near the beach in Tulum, for sale**

<i>ID: MLS-DTU289-1</i>	<i>Location: Tulum</i>
<i>Zone: Selvazama</i>	<i>Type: Condos</i>
<i>Bedrooms: 2</i>	<i>Bathrooms: 2</i>
<i>Levels: 1</i>	<i>Parking(s): 1</i>
<i>Construction: 123 m2 / 1,323.97 ft</i>	









 SELVA & CO.  
REALTY





S. DIA & Co.  
REALTY







S. DIA & Co.  
REALTY









 SELVA & Co.  
REALTY



 SELVA & Co.  
REALTY

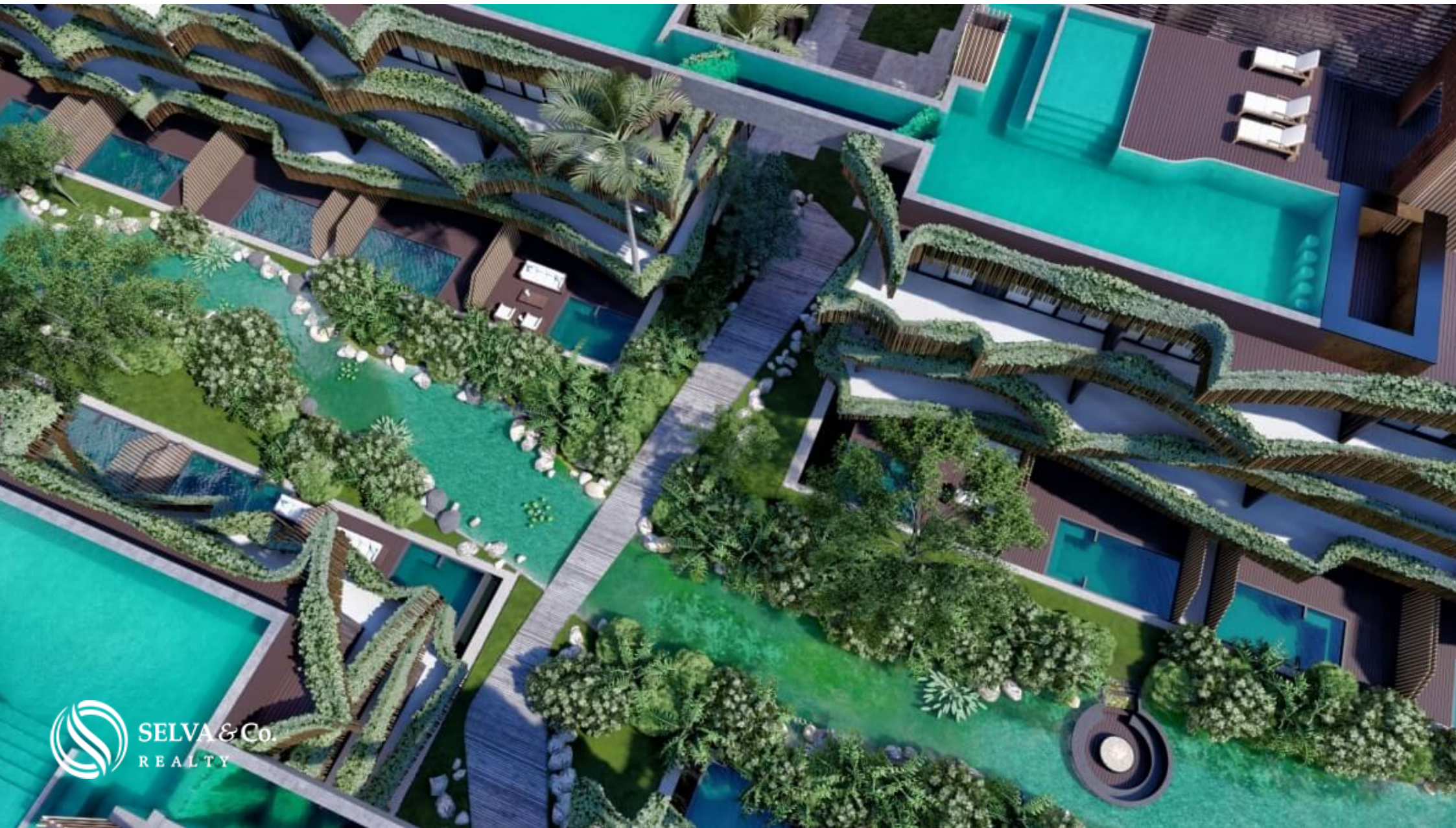


 SELVA & Co.  
REALTY



 SELVA & CO.  
REALTY



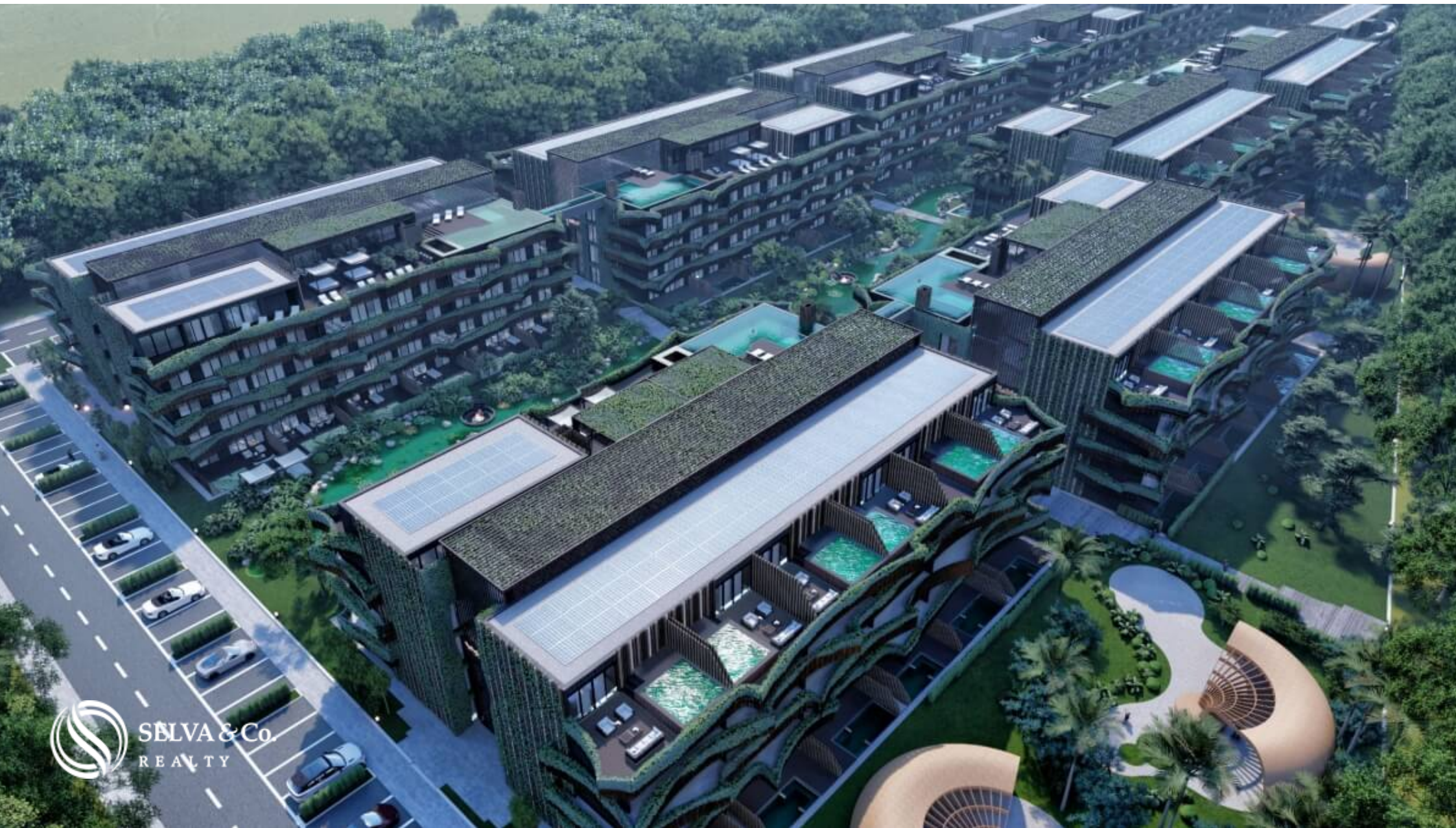






 SELVA & Co.  
REALTY



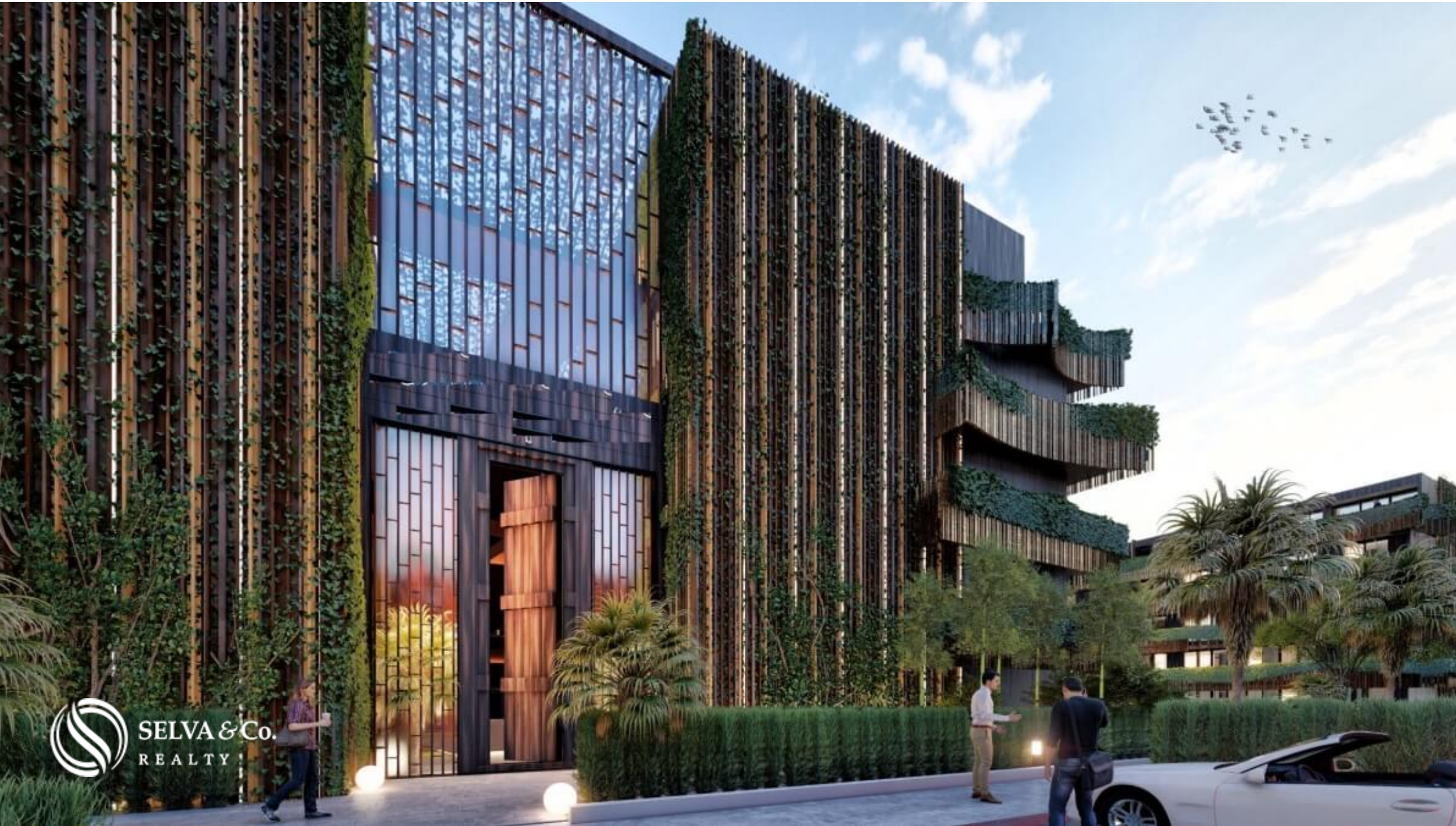




Vista Aerea  
Aerial View



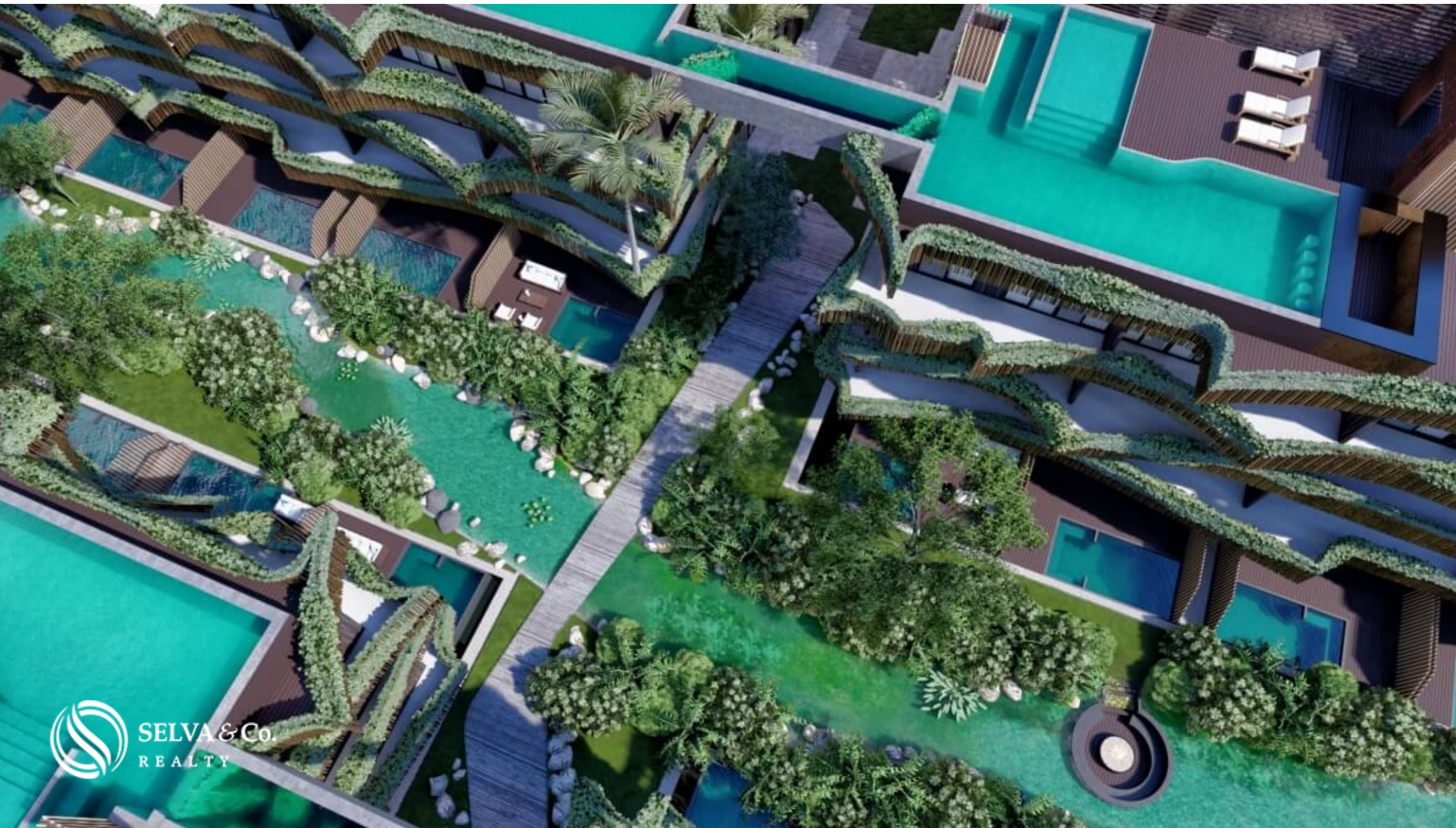




 SELVA & Co.  
REALTY



 SELVA & Co.  
REALTY









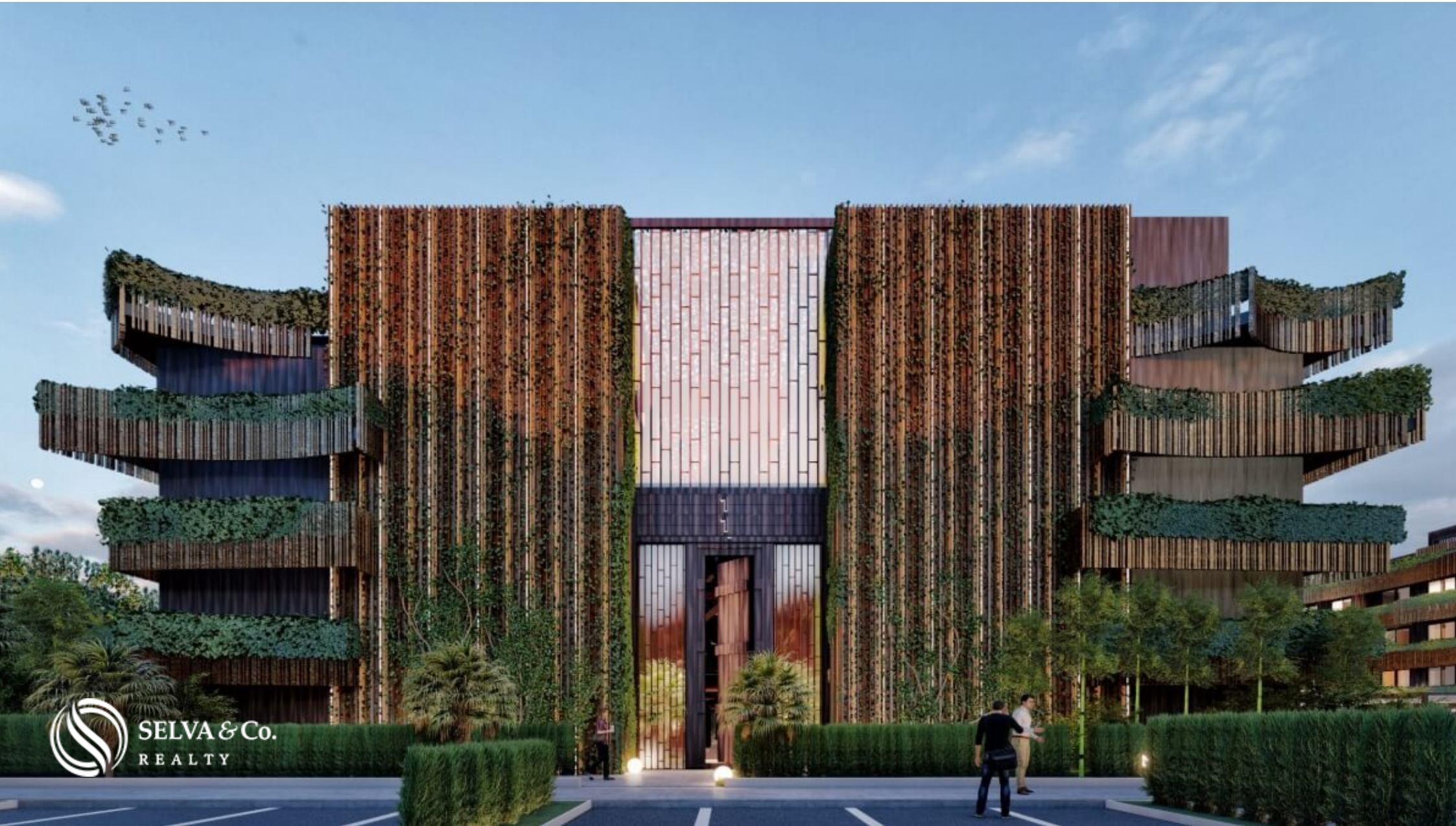


 SELVA & Co.  
REALTY









 SELVA & Co.  
REALTY

TIPOLOGÍA 1 RECAMARA

1 Bedroom



**Zona Arqueologica frente al mar**  
**Beach front archaeological Zone**

**Tulum centro - Downtown Tulum**

**Zona Hotelera Tulum**  
**Tulum Hotel Zone**

Zona Hotelera Tulum  
Tulum Hotel Zone

Biosfera Sian Ka'an  
Sian Ka'an Biosphere

Zona Arqueologica  
Archaeological Area

Departamento cerca de la playa  
Condo close to the beach

Ciclopista  
Bike path





 **Ciclopista  
Bike path**



Zona Hotelera  
SELVA & CO.  
REALTY  
Hotel Zone





SELVA & Co.  
REALTY  
Aldea Zama



# Ruinas Mayas Mayan Ruins





Sian Ka'an

## Description

MLS-DTU289-1

Condo with direct access to the pool from your terrace (swim up), common areas surrounded by nature, near the beach in Tulum, for sale

Residential complex surrounded by vegetation and nature with unique sensations through its different experiences.

Luxury apartments in sustainable development, green building & amenities for the whole family in the middle of the jungle.

**CLOSE TO THE BEACH**

Condo very close to the beach and the famous hotel zone of Tulum. Its location

with respect to the ocean makes it an outstanding department among the others.

## ENJOY THE OUTSIDE

Its common areas are integrated with nature, the complex offers jungle gardens, swimming pools connected with channels, outdoor spaces, hammock areas integrated into the river, roofed swimming pools multi-purpose pavilions and sports equipment, gym and yoga area,

Thanks to its sundecks, Balinese beds and exterior pools, an outdoor lifestyle is maintained.

Outdoor parking.

## GREEN BUILDING

Green building that incorporates large areas of trees and shrubs among its amenities and common areas, planters with shrubs are also integrated into its facade.

Its design is based on the communion between the natural environment and a contrasting geometry, its facade emulates the movement of the waves while creating dynamism through the use of native bamboo.

Architecture that approaches to nature, which provides an escape from everyday life allowing maximum connection with nature and relaxation.

## ECOLOGY

Use of materials that minimize the impact of construction and waste generation.

Rainwater collection for wastewater treatment.

Solar panels for the use of sustainable electricity.

Insulation system for walls and windows to keep the space cool and reduce the use of air conditioning.

## AMENITIES AND SERVICES

- Covered Gym area.
- Common areas integrated into nature.
- Swimming pools with connecting deck corridors.
- Pools at ground level integrated with nature.

- Multipurpose pavilions.
- Spa.
- Campfire areas surrounded by water and nature.
- Suspended pool.
- Beach club membership.
- Day care center for the little ones.
- Artificial river with central garden.
- Cafeteria and restaurant.
- Viewpoint terrace.
- Hammock area integrated into the river for maximum relaxation.

## HIGHLIGHTS OF THE DEPARTMENT

Built in open plan kitchen with corian, granite or composite stone countertop. equipped with electric hood, refrigerator, stove, microwave oven, electric heater and kitchen cabinet.

Bedroom with access to the terrace.

Travertine marble floors in interiors, terraces and shower area.

Bright apartments with large windows that allow each of the most important spaces to have exceptional views and natural lighting.

Full wall window and access to the terrace or balcony that opens to create a larger space ideal for entertaining your guests or having an indoor-outdoor lifestyle.

Air conditioning in bedrooms and living room.

## INVESTMENT IN PRE-CONSTRUCTION

Apartments in pre-sale, delivery date, August 2023 ..

### DISCOUNT UP TO 20%

- 20% discount under payment conditions: 80% down payment, 15% against physical delivery and 5% against deed

- 11% discount under payment conditions: 50% down payment, 45% against

physical delivery and 5% against deed

- List price under payment conditions: 30% down payment, 65% against physical delivery and 5% against deed

The photographs are of the project in general, they do not correspond to a particular unit.

Prices in pesos may vary according to the exchange rate, contact us to learn more about this property or visit the area, we can offer you similar options so you can compare and make the best decision, it will be a pleasure to advise you in your investment.

We have access to the best agencies and developers in the area, more than 10 years of experience.

#MLSDTU289 #Tulumlistings #selvacorealty #investintulum #condoforsaletulum  
#lifestyletulum #liveintulum #greenviewrealestate #realestatetips #livetulum  
#investintulum #tulumvibe #tulumhome #tulumrealestate #greenrealestate  
#realestatetulum #condoforsaletulum #tulum

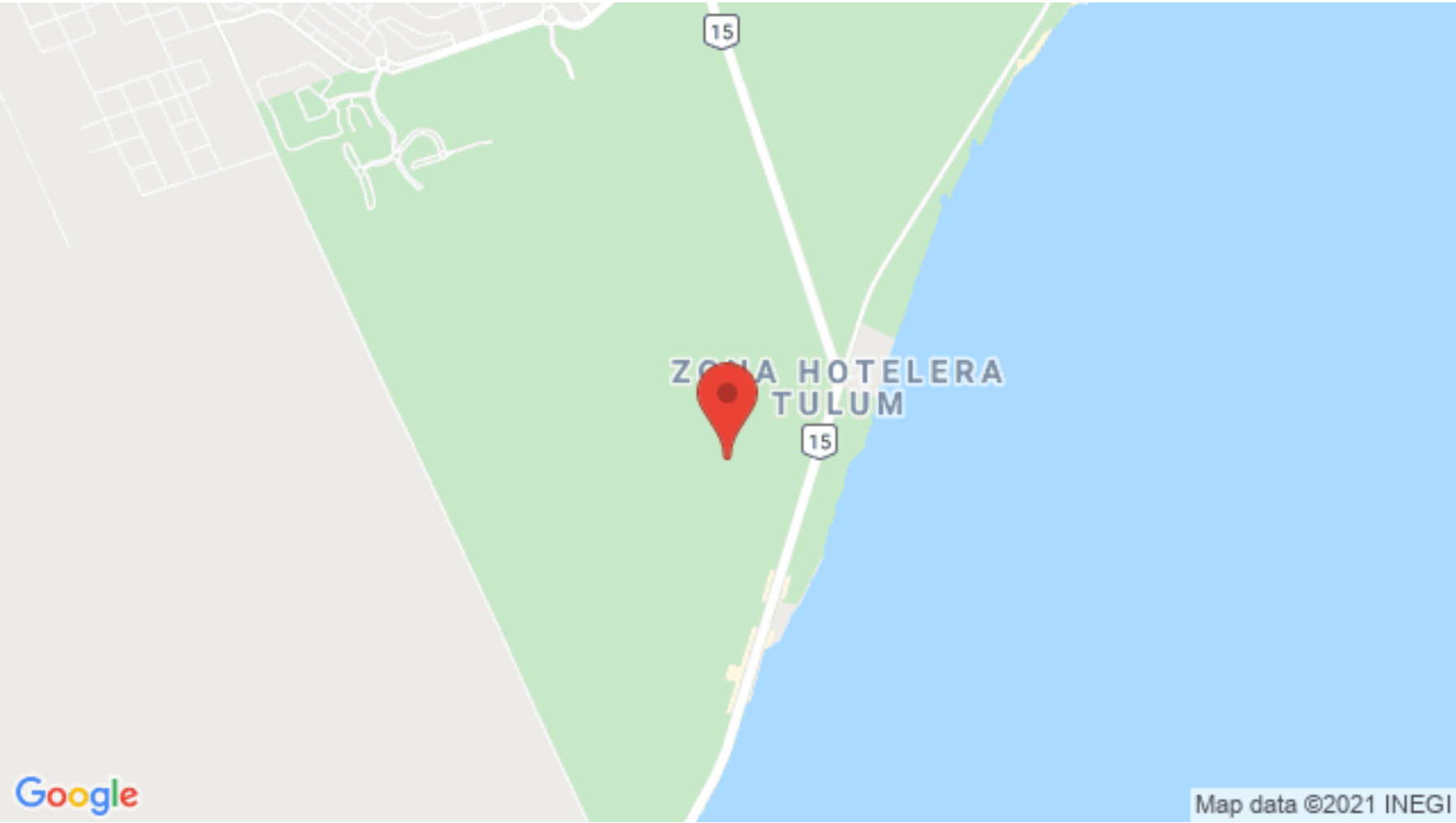
## Property details

- Air conditioning
- Fully equipped kitchen
- Integral Kitchen
- Balcony
- Garden view
- Unfurnished

## Amenities

- Beach Club
- Elevator
- Infinity pool
- Kids Club
- Roof garden
- Security 24/7
- Sundeck area
- Yoga area
- Controlled access
- Gym
- Internet Access
- Lake
- Rooftop pool
- Spa
- Swimming Pool

# Location





**SELVA & Co.**  
R E A L T Y

MX 984 803 2058 / US 805 308 2900

[www.selvacorealty.com](http://www.selvacorealty.com)